



YELLOWSTONE CLUB



ALPINE GREENS | 750

UPPER LEVEL  
ENTRANCE



UPPER LEVEL  
MAIN ROOM



# - ALPINE GREENS 750 -


6,388 TOTAL HEATED LIVABLE SQUARE FOOTAGE

## FEATURES

5 Bedrooms  
7 Bathrooms  
6,388 sq. ft.  
0.77 Acres  
3 Car Garage

Views of Lone Peak, Pioneer Mountain,  
Gallatin Range, and Wilson Peak  
Outdoor living areas  
New Construction

This residence is located within Yellowstone Club, a 15,200 acre private, gated community located in Big Sky, Montana. Yellowstone Club is the world's only private ski and golf community, encompassing thousands of acres of private skiing along with a championship golf course designed by Tom Weiskopf. Additionally, whether looking to savor spectacular mountain panoramas, explore the vast wilderness or enjoy high-quality amenities, Yellowstone Club offers everything from fly fishing, hiking and biking trails to fine dining and spa services. Professional SnowSports, golf and outdoor recreation programs, along with dedicated children's activities, round out the unique Montana experience that is Yellowstone Club.



3 CAR GARAGE  
& FRONT ENTRANCE



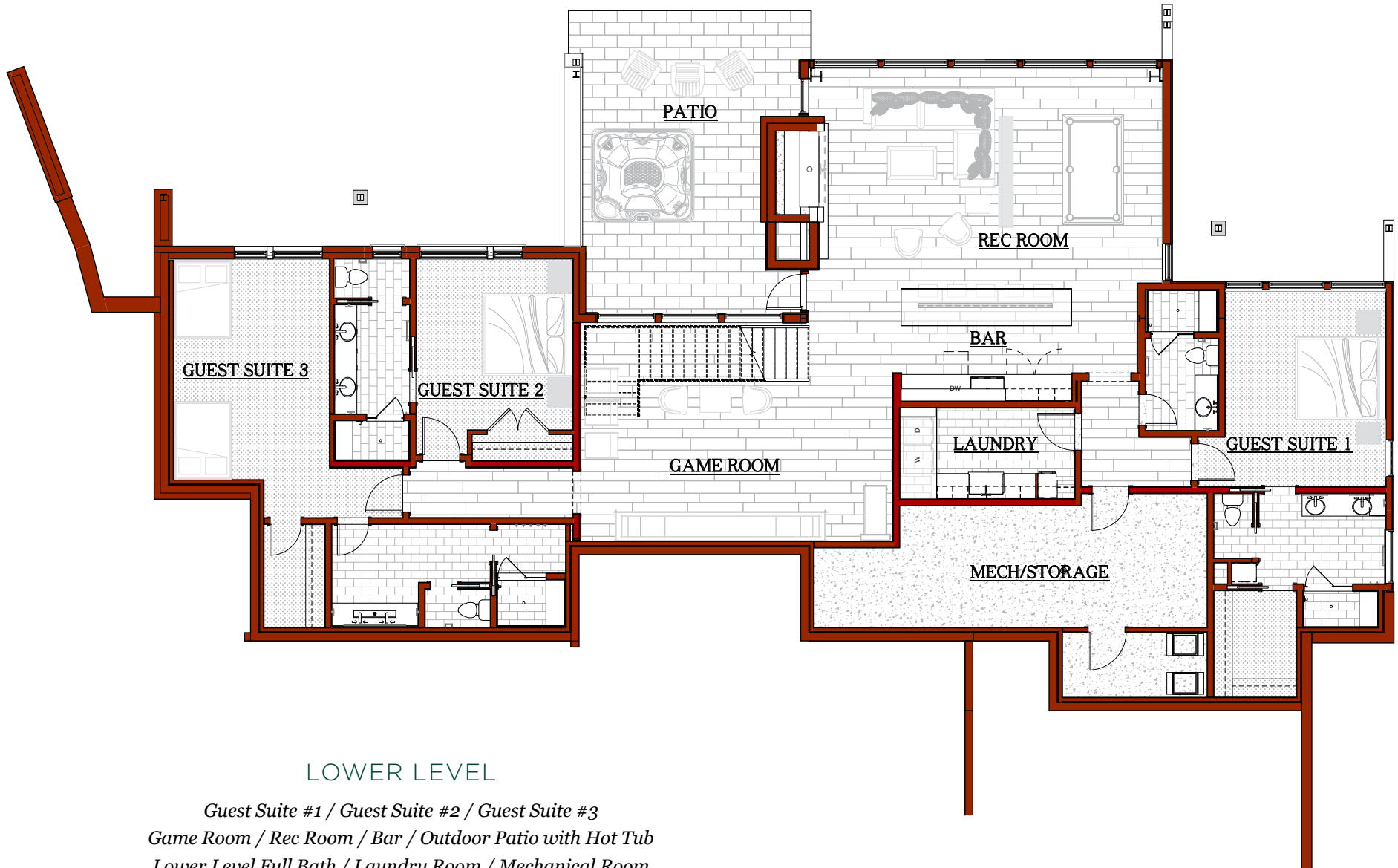
**- ALPINE GREENS 750 -**

6,388 TOTAL HEATED LIVABLE SQUARE FOOTAGE

**MAIN LEVEL**

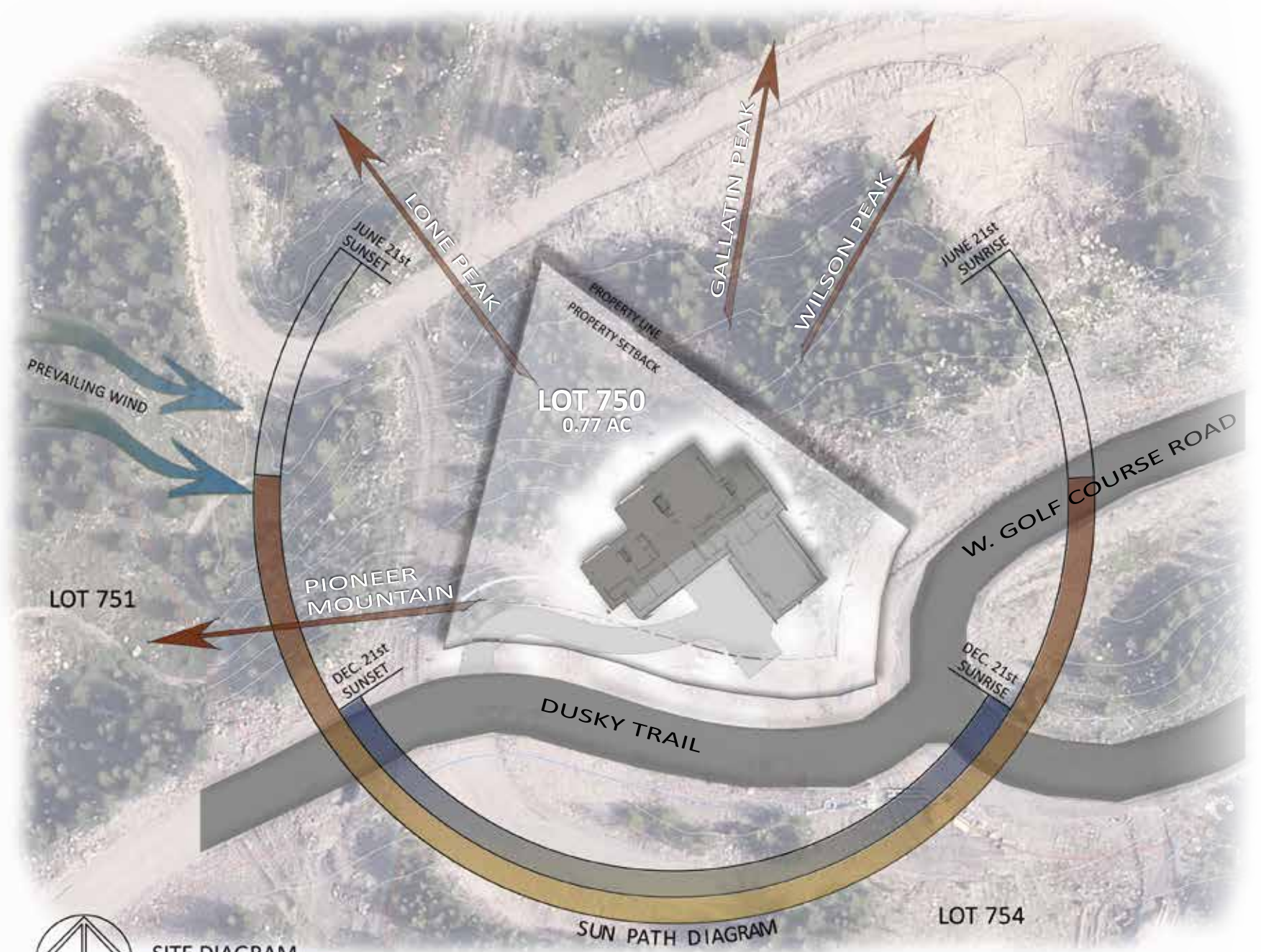
- Entry Foyer / Great Room / Kitchen / Dining*
- Master Suite / Master Suite Deck / Study*
- Jr. Suite / Jr. Suite Deck / Mud Room / Laundry*
- Gallery / Outdoor Living Space / 3 Car Garage*

- ALPINE GREENS 750 -  
6,388 TOTAL HEATED LIVABLE SQUARE FOOTAGE



LOWER LEVEL

*Guest Suite #1 / Guest Suite #2 / Guest Suite #3  
Game Room / Rec Room / Bar / Outdoor Patio with Hot Tub  
Lower Level Full Bath / Laundry Room / Mechanical Room*



SITE DIAGRAM

SUN PATH DIAGRAM





LOWER LEVEL  
& OUTDOOR PATIO



LOWER LEVEL LIVING AREA

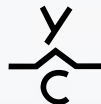




DOWNWARD SLOPE  
EXTERIOR



DRIVEWAY EXTERIOR



**YELLOWSTONE CLUB®**

For more information about this property and its pricing please contact YC Realty.

(888) 700-7748 | (406) 995-4900 | [yccsales@yellowstoneclub.com](mailto:yccsales@yellowstoneclub.com) | P.O. Box 161097 | Big Sky, Montana 59716

[www.yellowstoneclub.com](http://www.yellowstoneclub.com)

All information deemed reliable, but not guaranteed. All acreages and square footages are estimates. The purchase of a home or homesite does not include membership in Yellowstone Club, or any right to use the private club facilities. Ownership of a home/homesite includes an obligation to pay assessments to a property owner's association. Please ask a sales associate for details. Photographs are representational of the approximate view corridors from the home. Livable square footages listed in this marketing piece are based upon the calculation of only the heated and livable areas within the exterior walls of the property and said square footages are deemed reliable, but not guaranteed. All acreages and square footages are estimates and are provided by the Seller or his designated representative; these measurements should not be a substitute for one's own evaluation and investigation. Ski accessibility is a relative term and can have different implications and meanings depending on the individual. One should investigate fully the property as it relates to its potential ski access and determine for themselves the degree of ski access the property might have or be developed. Buyer acknowledges and agrees that neither the Seller, the Broker, the Sales Associate nor any other real estate representative of the Yellowstone Club or its related affiliates have made any warranties or representations upon which Buyer has relied concerning the ski-in ski-out accessibility of the property. The determination of the level of ski access that a property might have will be the Buyers sole determination. 6/20

