



YELLOWSTONE CLUB



AMERICAN SPIRIT | 877

VIEW OF PIONEER RIDGE



- AMERICAN SPIRIT 877 -

8,776 TOTAL HEATED LIVABLE SQUARE FOOTAGE

With its close proximity to Rainbow Lodge and the countless base area amenities, it's no wonder the American Spirit neighborhood has become a beloved corner within the Yellowstone Club. Custom Residence 877 captures the natural beauty of the landscape in a stunning six-bedroom home, full of luxurious details and jaw-dropping views.

This new home offers nearly 9,000 square feet of living space across three levels. From the main entryway, guests move easily into the great room, where, thanks to a wall of windows, views of Lone Peak fill the home. Other main-level gathering spaces include the family room, dining room, and gourmet kitchen. The master suite also frames incredible mountain views and features its own private deck, fireplace, office, and spacious bath area.

Two additional levels guarantee abundant space for entertaining and luxurious room for guests. The guest suites feature private bedroom and bathrooms, separated by a hallway. The home's lower level includes a tv room, game room, and bar, plus three additional bedrooms, each with walk-out access to the patio/hot-tub area, ideal for après-ski evenings, and optional theater.

FEATURES

6 Bedrooms

8 Bathrooms

8,776 sq. ft.

0.52 Acres

2 Car Oversized Garage

Views of Lone Peak, Pioneer Ridge,
Gallatin Range, and Spanish Peaks

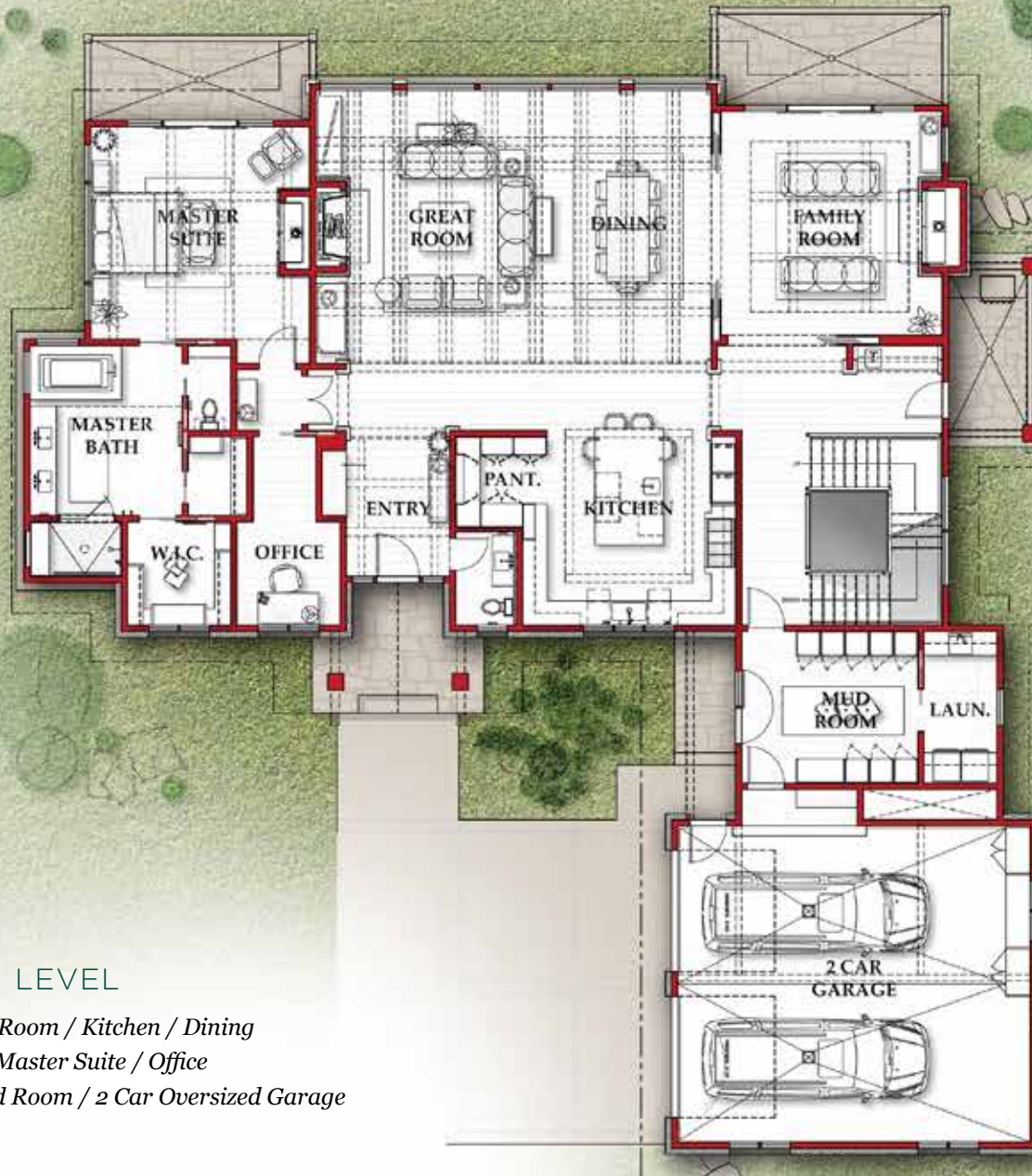
Outdoor patios

New Construction

This residence is located within Yellowstone Club, a 15,200 acre private, gated community located in Big Sky, Montana. Yellowstone Club is the world's only private ski and golf community, encompassing thousands of acres of private skiing along with a championship golf course designed by Tom Weiskopf. Additionally, whether looking to savor spectacular mountain panoramas, explore the vast wilderness or enjoy high-quality amenities, Yellowstone Club offers everything from fly fishing, hiking and biking trails to fine dining and spa services. Professional SnowSports, golf and outdoor recreation programs, along with dedicated children's activities, round out the unique Montana experience that is Yellowstone Club.

- AMERICAN SPIRIT 877 -

8,776 TOTAL HEATED LIVABLE SQUARE FOOTAGE

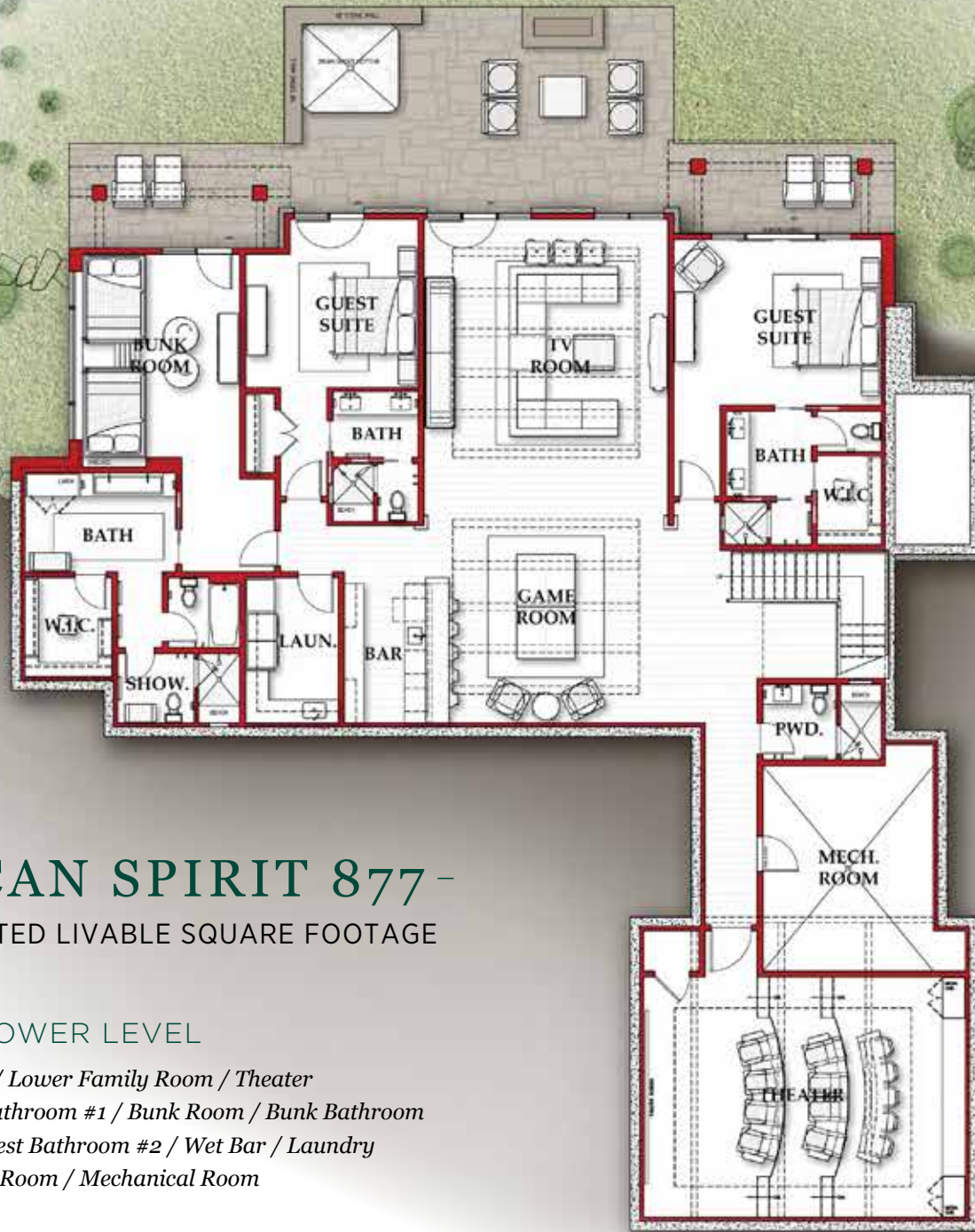


MAIN LEVEL

Entry Foyer / Great Room / Kitchen / Dining

Family Room / Master Suite / Office

Pantry / Powder Room / Mud Room / 2 Car Oversized Garage



- AMERICAN SPIRIT 877 -
 8,776 TOTAL HEATED LIVABLE SQUARE FOOTAGE

LOWER LEVEL

- Game Room / Lower Family Room / Theater*
- Guest Suite #1 / Guest Bathroom #1 / Bunk Room / Bunk Bathroom*
- Guest Suite #2 / Guest Bathroom #2 / Wet Bar / Laundry*
- Powder Room / Mechanical Room*

- AMERICAN SPIRIT 877 -

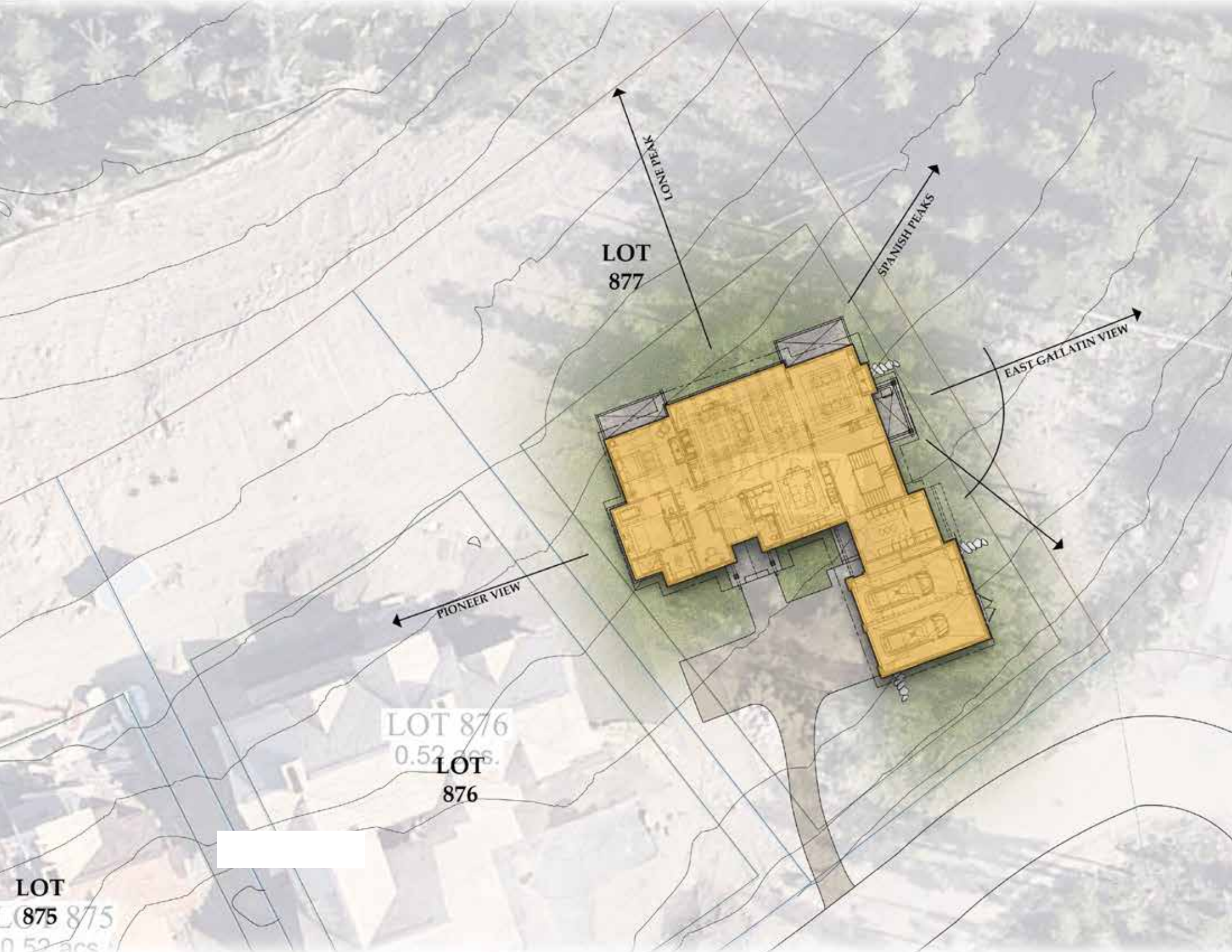
8,776 TOTAL HEATED LIVABLE SQUARE FOOTAGE



UPPER LEVEL

Jr. Master Suite

Guest Suite #3 / Guest Bathroom #3 / Patio



LOT
877

LONE PEAK

SPANISH PEAKS

EAST GALLATIN VIEW

PIONEER VIEW

LOT 876
0.52 acs.
LOT
876

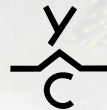
LOT
875
0.52 acs.

VIEW OF LONE PEAK





EXTERNAL DETAILS



YELLOWSTONE CLUB

For more information about this property and its pricing please contact YC Realty.

(888) 700-7748 | (406) 995-4900 | yccsales@yellowstoneclub.com | P.O. Box 161097 | Big Sky, Montana 59716

www.yellowstoneclub.com

All information deemed reliable, but not guaranteed. All acreages and square footages are estimates. The purchase of a home or homesite does not include membership in Yellowstone Club, or any right to use the private club facilities. Ownership of a home/homesite includes an obligation to pay assessments to a property owner's association. Please ask a sales associate for details. Photographs are representational of the approximate view corridors from the home. Livable square footages listed in this marketing piece are based upon the calculation of only the heated and livable areas within the exterior walls of the property and said square footages are deemed reliable, but not guaranteed. All acreages and square footages are estimates and are provided by the Seller or his designated representative; these measurements should not be a substitute for one's own evaluation and investigation. Ski accessibility is a relative term and can have different implications and meanings depending on the individual. One should investigate fully the property as it relates to its potential ski access and determine for themselves the degree of ski access the property might have or be developed. Buyer acknowledges and agrees that neither the Seller, the Broker, the Sales Associate nor any other real estate representative of the Yellowstone Club or its related affiliates have made any warranties or representations upon which Buyer has relied concerning the ski-in ski-out accessibility of the property. The determination of the level of ski access that a property might have will be the Buyers sole determination.