



YELLOWSTONE CLUB

PINE RIDGE

24 Lower Cedarview Drive

| 334

TUCKED UNDER LONE PEAK



- PINE RIDGE 334 -

24 LOWER CEDARVIEW DRIVE

Situated on nearly 6.5 quiet, treed acres, Pine Ridge 334 is its own retreat. This custom residence sits on one of the larger lots within the Club, within easy access to countless amenities, and is the ideal location for creating lasting memories.

This home, tucked against the backdrop of Lone Peak, features a rustic elegance, sprinkled with thoughtful touches, pops of color, and custom designs. From the lower level entryway, an open wood staircase serves as the centerpiece that connects all three levels; the home is also made functionally accessible via the nearby elevator. This lower level includes so many options for recreation and merriment: 9-seat home theater, spacious wine room, and family room. This level includes two guest suites plus a fun bunk area, perfect for kids.

A scenic climb upwards reveals the main level, home to diverse and abundant gathering places, including the stunning living room complete with grand fireplace and the spacious, open kitchen, designed to please even the most discerning home chef. Generous use of natural materials, including rough-hewn floors, stacked stone, and heavy timbered beams, lend the home a sense of permanence and warmth, perfect for the Southwest Montana setting. The main level also features a formal dining room and two guest suites.

Upstairs, the master suite spreads out across the whole upper level, evoking the feel of a cozy chalet. Complete with fireplace, private deck, large closet and bath, this suite is the perfect owners' retreat, rounded out with a private office. Additional guest accommodations are found in the guest house above the garage. Here, guests will enjoy a separate living room, small kitchen, bunk room, full bathroom, and guest bedroom. The garage space below offers covered parking for three vehicles as well as equipment storage.

From its location on Lower Cedarview Drive, this custom residence is easy driving distance to the much-loved base area amenities, including skiing on Pioneer Mountain, dining, recreation, and concierge services.



CUSTOM STONE WORK

- PINE RIDGE 334 -

24 LOWER CEDARVIEW DRIVE

FEATURES

6.46 acres

8 bedrooms, 7 bathrooms

Main house: 7,385 square feet

Guest house + garage: 2,259 square feet

Large screen home theater

Elevator, wine room

Hand-stacked stone fireplaces

Views of Pioneer Mountain, Cedar Mountain,
and Gallatin Range

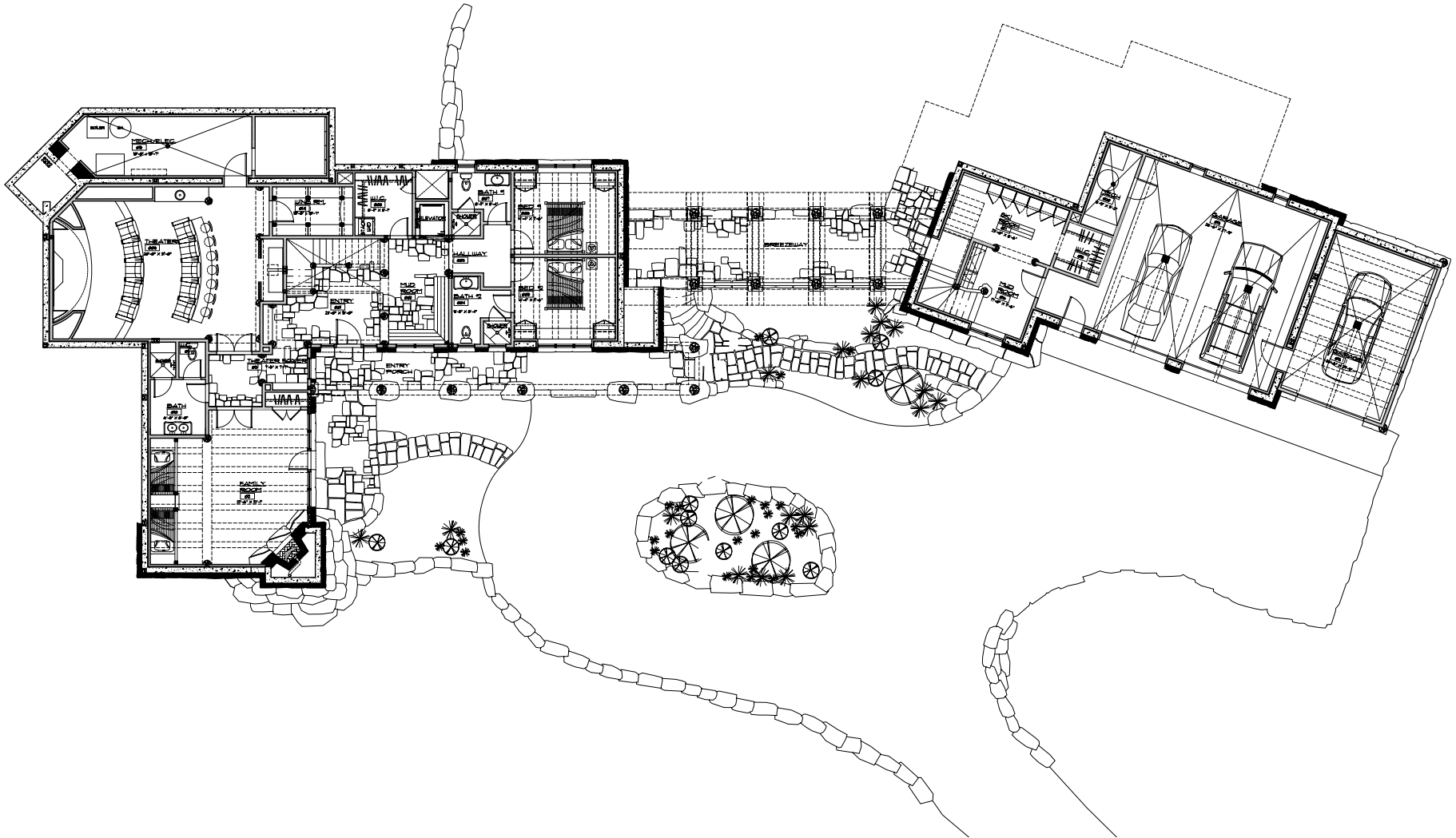
This residence is located within Yellowstone Club, a 15,200 acre private, gated community located in Big Sky, Montana. Yellowstone Club is the world's only private ski and golf community, encompassing thousands of acres of private skiing along with a championship golf course designed by Tom Weiskopf. Additionally, whether looking to savor spectacular mountain panoramas, explore the vast wilderness or enjoy high-quality amenities, Yellowstone Club offers everything from fly fishing, hiking and biking trails to fine dining and spa services. Professional SnowSports, golf and outdoor recreation programs, along with dedicated children's activities, round out the unique Montana experience that is Yellowstone Club.



VIEW OF PIONEER RIDGE

- PINE RIDGE 334 -

24 LOWER CEDARVIEW DRIVE



LOWER LEVEL - MAIN HOUSE

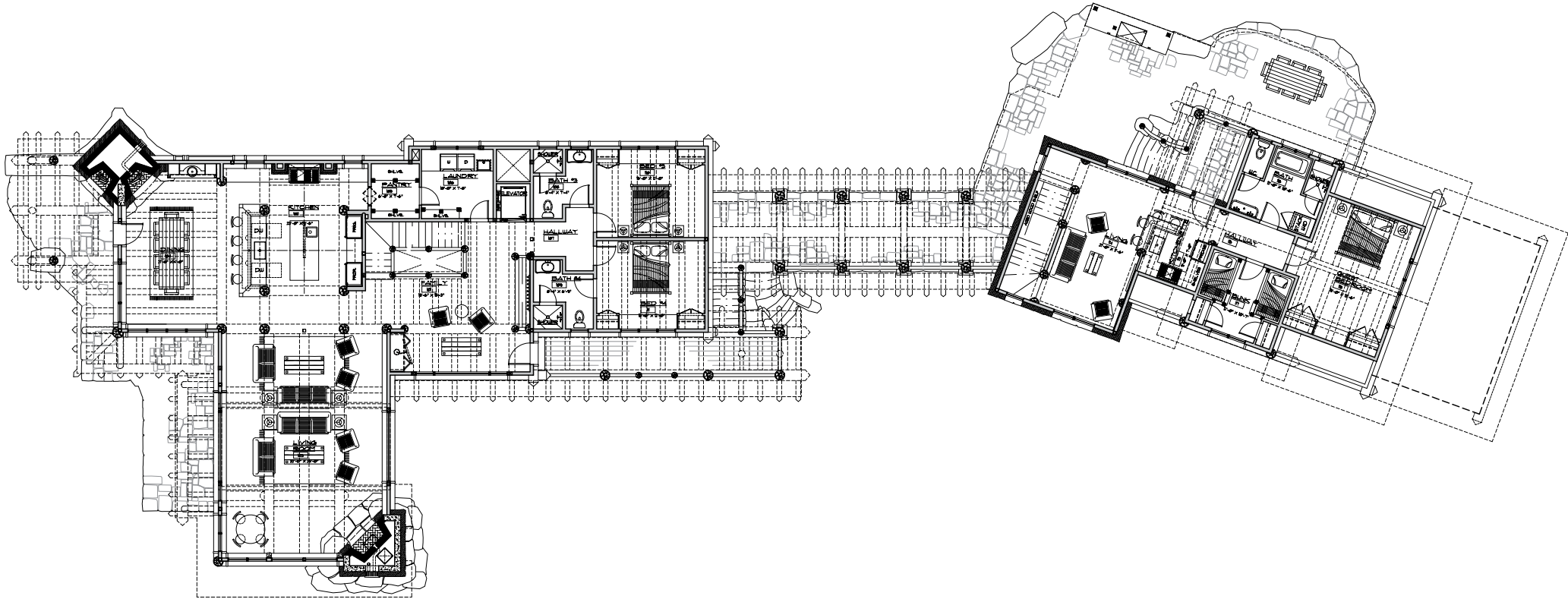
*Entry Foyer / Mud Room / Family Room / Full Bathroom
Guest Bedroom 1 / Guest Bathroom 1 / Guest Bedroom 2
Guest Bathroom 2 / Theatre / Wine Cellar / Elevator*

LOWER LEVEL - GUEST HOUSE

3 Car Garage / Ski Room / Mud Room

- PINE RIDGE 334 -

24 LOWER CEDARVIEW DRIVE



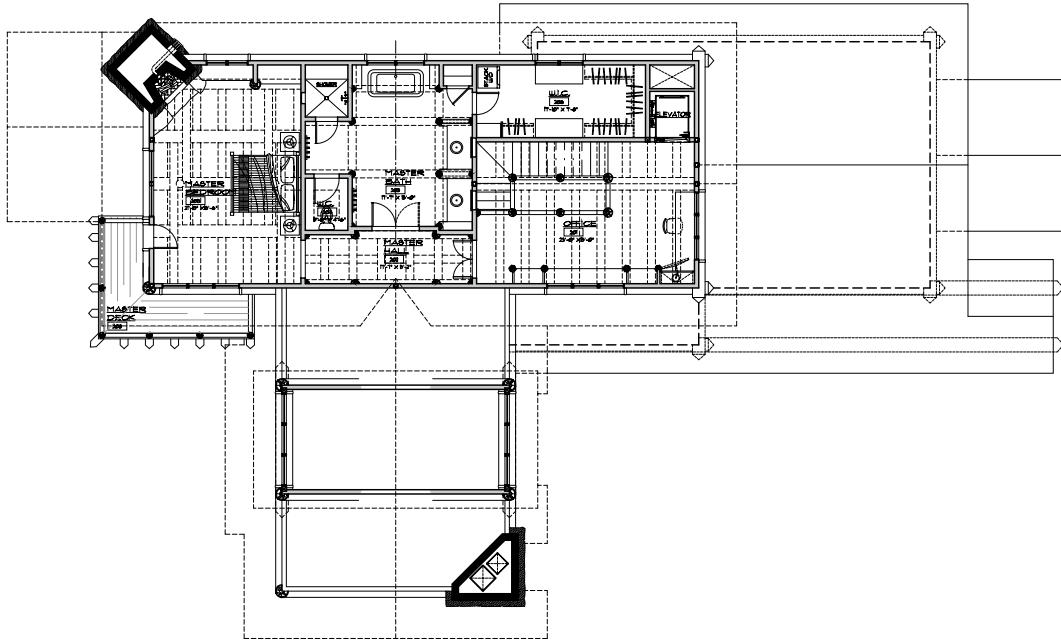
MAIN LEVEL - MAIN HOUSE

*Great Room / Kitchen / Dining Room / Family Room
Pantry / Guest Bedroom 3 / Guest Bathroom 3 /
Guest Bedroom 4 / Guest Bathroom 4 / Outdoor Living Area*

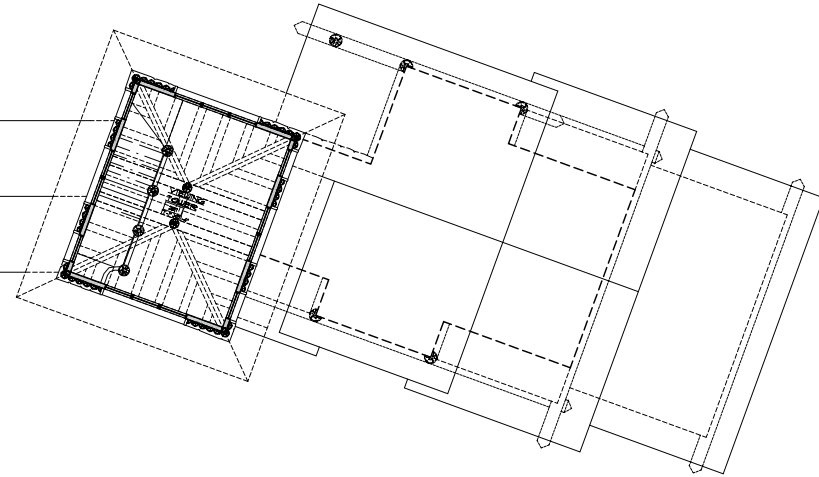
MAIN LEVEL - GUEST HOUSE

*Guest Bedroom 5 / Guest Bathroom 5 / Bunk Room
Lounge / Kitchenette*

- PINE RIDGE 334 -
UPPER LEVEL



UPPER LEVEL - MAIN HOUSE
Master Suite / Office



UPPER LEVEL - GUEST HOUSE
Lookout Tower





KITCHEN



DINING



GUEST BEDROOM



GUEST BEDROOM



GUEST BATHROOM





MASTER BEDROOM

MASTER BATHROOM



GUEST BEDROOM



Above garage - guest home



KITCHENETTE



LOUNGE



BUNK ROOM



GUEST BATHROOM



LOWER LEVEL ENTRY & MUD ROOM



GUEST BEDROOM



GUEST BEDROOM



GUEST BATHROOM



GUEST BATHROOM



LOWER LEVEL FAMILY ROOM



THEATRE



WINE CELLAR



LOWER LEVEL BATHROOM

LOOKOUT TOWER LOUNGE





DUSK EXTERIOR



BACKYARD POND



OUTDOOR LIVING SPACES



YELLOWSTONE CLUB

For more information about this property and its pricing please contact YC Realty.

(888) 700-7748 | (406) 995-4900 | ycsales@yellowstoneclub.com | P.O. Box 161097 | Big Sky, Montana 59716

www.yellowstoneclub.com

All information deemed reliable, but not guaranteed. All acreages and square footages are estimates. The purchase of a home or homesite does not include membership in Yellowstone Club, or any right to use the private club facilities. Ownership of a home/homesite includes an obligation to pay assessments to a property owner's association. Please ask a sales associate for details. Photographs are representational of the approximate view corridors from the home. Livable square footages listed in this marketing piece are based upon the calculation of only the heated and livable areas within the exterior walls of the property and said square footages are deemed reliable, but not guaranteed. All acreages and square footages are estimates and are provided by the Seller or his designated representative; these measurements should not be a substitute for one's own evaluation and investigation. Ski accessibility is a relative term and can have different implications and meanings depending on the individual. One should investigate fully the property as it relates to its potential ski access and determine for themselves the degree of ski access the property might have or be developed. Buyer acknowledges and agrees that neither the Seller, the Broker, the Sales Associate nor any other real estate representative of the Yellowstone Club or its related affiliates have made any warranties or representations upon which Buyer has relied concerning the ski-in ski-out accessibility of the property. The determination of the level of ski access that a property might have will be the Buyers sole determination. 1/20

