

YELLOWSTONE CLUB



ALPINE GREENS | 760

VIEW OF LONE PEAK



- ALPINE GREENS 760 -

7,652 TOTAL HEATED LIVABLE SQUARE FOOTAGE

Members who choose to live in the Alpine Greens neighborhood quickly learn that this neighborhood truly has it all: prime access to the 18-hole Tom Weiskopf-designed golf course, ski access to Eglise and Pioneer via a private ski easement, and, of course, the breathtaking views for which the Yellowstone Club is known. The numerous golf Clubhouse amenities, including dining, fitness, and golf pros, are but a short distance away; a plethora of additional amenities are a short drive away at the base area and the famed Warren Miller Lodge.

Alpine Greens 760 is a custom residence built to capture all the best of Southwest Montana. From its location on the northwestern boundary of the golf course, this home is poised to grab huge views of the surrounding peaks. Most notably, both Lone Peak and Pioneer Mountain figure prominently in the background, with crags and peaks that fill the home with impressive scenery.

This home features a thoughtful layout that guarantees space for large gatherings: its six bedrooms, each with private bathroom, offer private sanctuaries. Upon entering the home, the glassed entry welcomes guests upstairs to the great room, where giant peaked windows echo the shape of the nearby mountains: this space is light-filled and inspiring. Throughout the home, custom touches like the gourmet kitchen, ski room with lockers, covered all-season patios, and hand-stacked stone fireplaces elevate this residence to the pinnacle of mountain living.

FEATURES

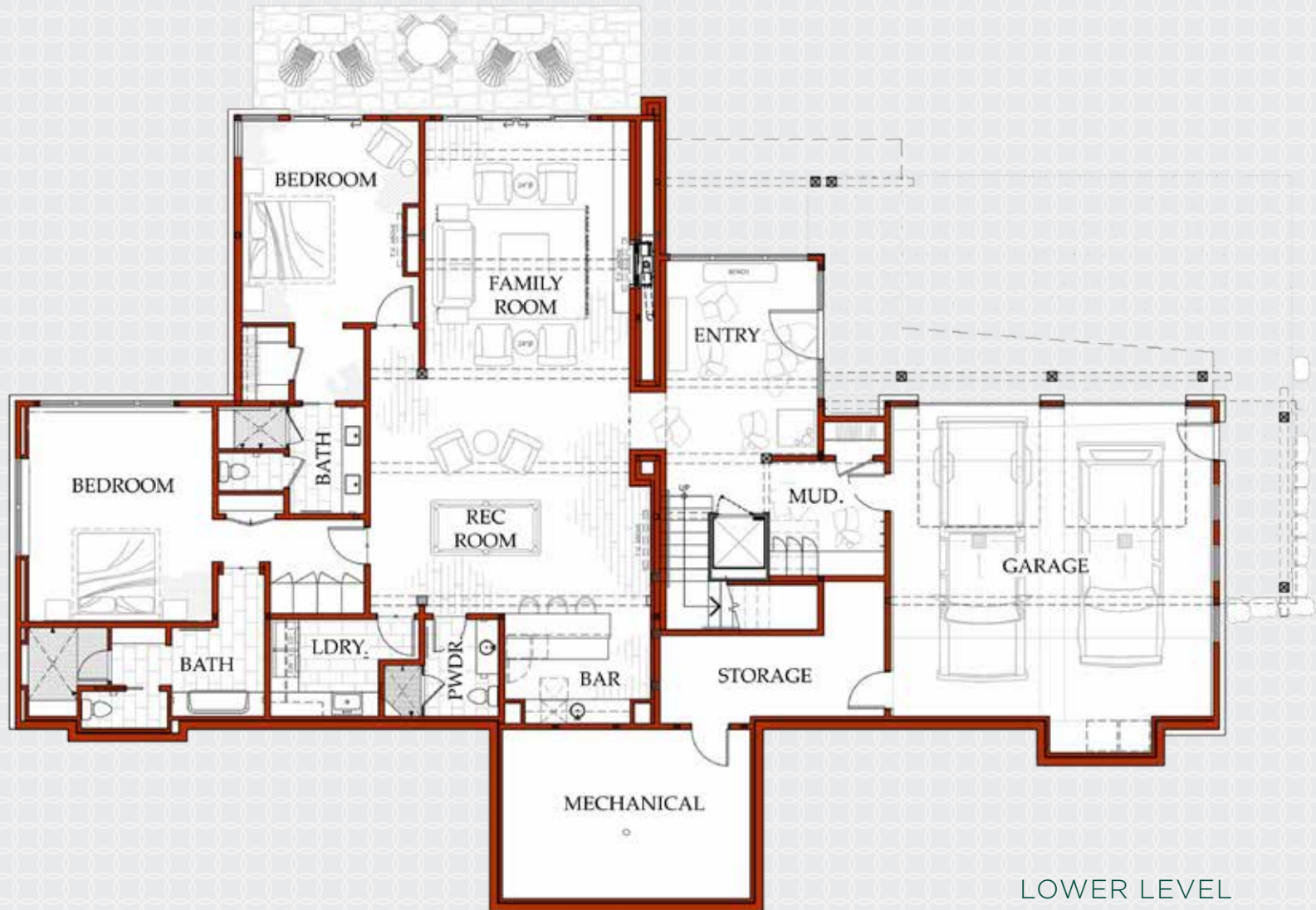
6 Bedroom
8 Bathrooms
7,652 sq. ft. of outdoor living space
Ski room with lockers

Views of Lone Peak, Pioneer Ridge,
Gallatin Range, and Cedar Mountain
Outdoor living areas
New Construction

This residence is located within Yellowstone Club, a 15,200 acre private, gated community located in Big Sky, Montana. Yellowstone Club is the world's only private ski and golf community, encompassing thousands of acres of private skiing along with a championship golf course designed by Tom Weiskopf. Additionally, whether looking to savor spectacular mountain panoramas, explore the vast wilderness or enjoy high-quality amenities, Yellowstone Club offers everything from fly fishing, hiking and biking trails to fine dining and spa services. Professional SnowSports, golf and outdoor recreation programs, along with dedicated children's activities, round out the unique Montana experience that is Yellowstone Club.

- ALPINE GREENS 760 -

7,652 TOTAL HEATED LIVABLE SQUARE FOOTAGE

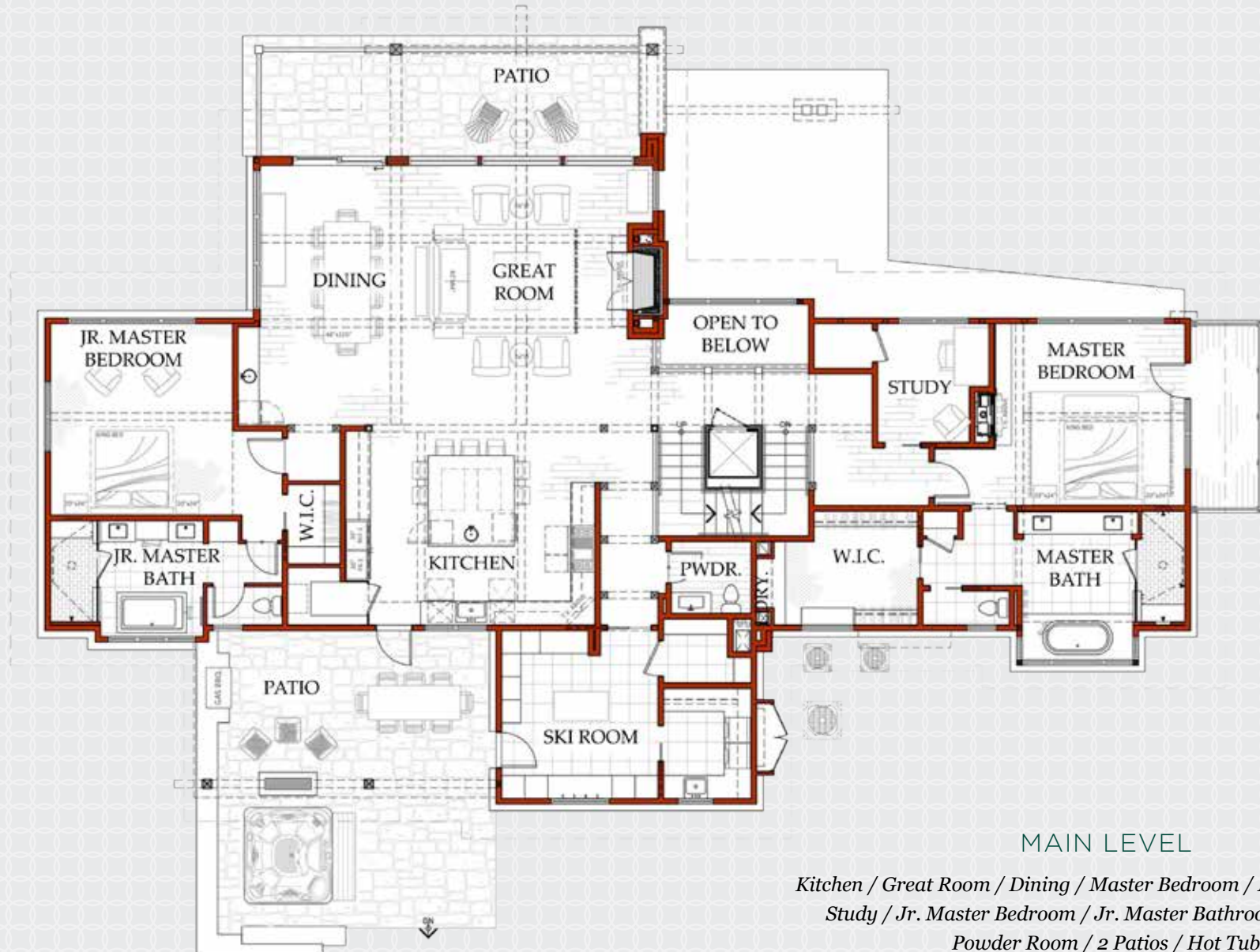


LOWER LEVEL

*Entry Foyer / Family Room / Rec Room / Wet Bar
Guest Suite #1 / Guest Suite #2 / Powder Room
Laundry / 2-Car Garage*

- ALPINE GREENS 760 -

7,652 TOTAL HEATED LIVABLE SQUARE FOOTAGE

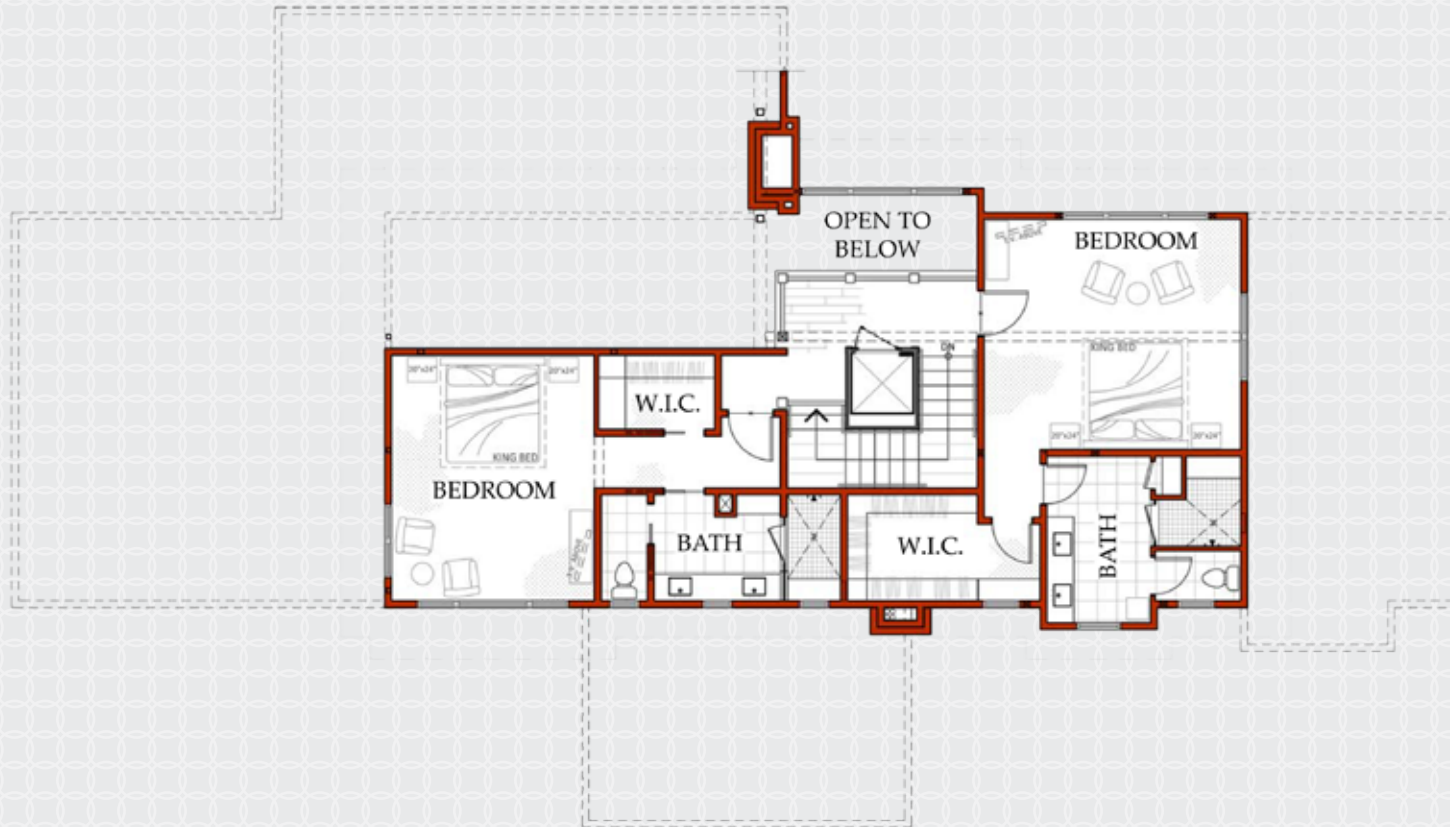


MAIN LEVEL

*Kitchen / Great Room / Dining / Master Bedroom / Master Bathroom
Study / Jr. Master Bedroom / Jr. Master Bathroom / Ski Room
Powder Room / 2 Patios / Hot Tub*

- ALPINE GREENS 760 -

7,652 TOTAL HEATED LIVABLE SQUARE FOOTAGE

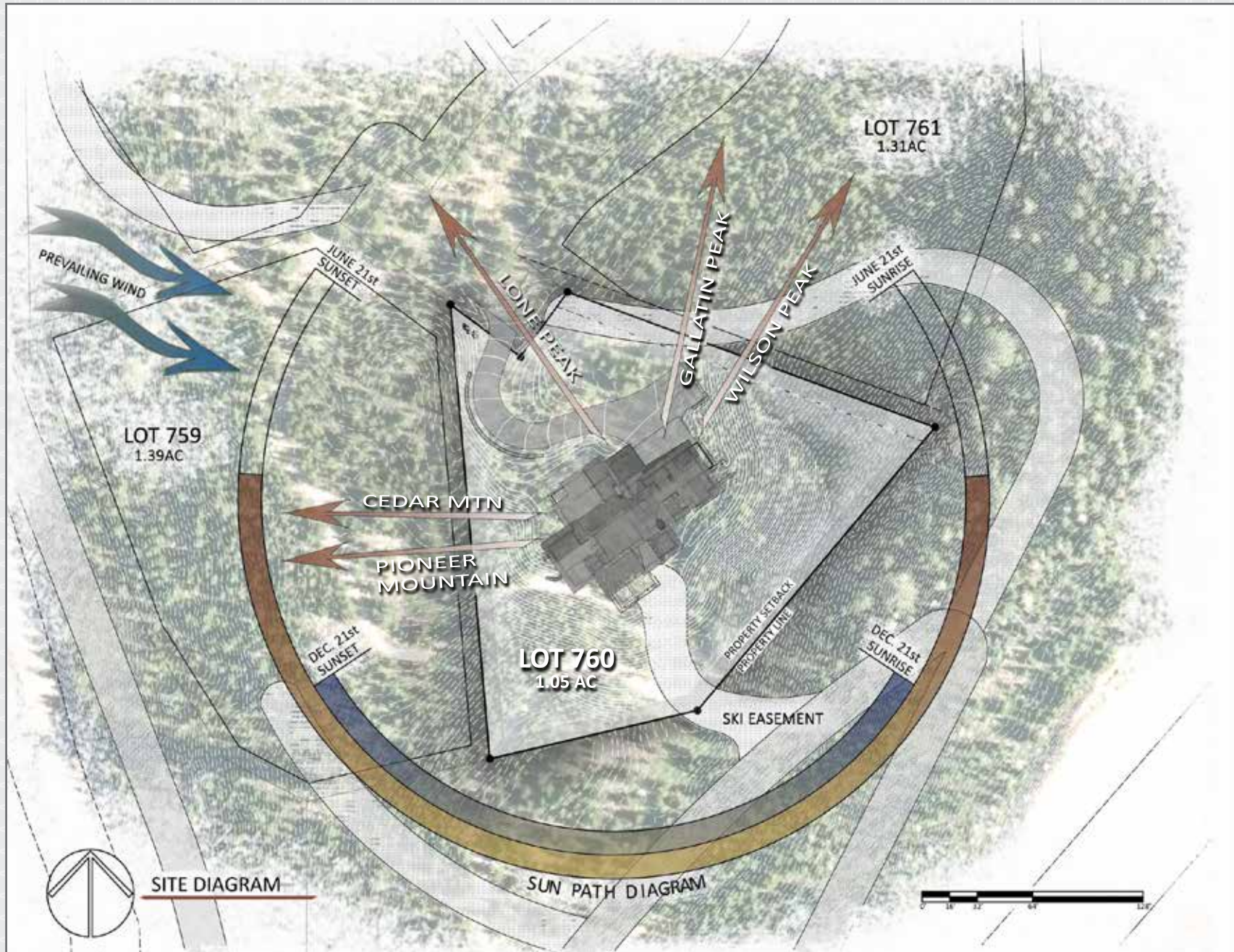


UPPER LEVEL

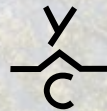
Guest Suite #3 / Guest Suite #4

- ALPINE GREENS 760 -

SITE PLAN



VIEW OF PIONEER MOUNTAIN



YELLOWSTONE CLUB

For more information about this property and its pricing please contact YC Realty.

(888) 700-7748 | (406) 995-4900 | yccsales@yellowstoneclub.com | P.O. Box 161097 | Big Sky, Montana 59716

www.yellowstoneclub.com

All information deemed reliable, but not guaranteed. All acreages and square footages are estimates. The purchase of a home or homesite does not include membership in Yellowstone Club, or any right to use the private club facilities. Ownership of a home/homesite includes an obligation to pay assessments to a property owner's association. Please ask a sales associate for details. Photographs are representational of the approximate view corridors from the home. Livable square footages listed in this marketing piece are based upon the calculation of only the heated and livable areas within the exterior walls of the property and said square footages are deemed reliable, but not guaranteed. All acreages and square footages are estimates and are provided by the Seller or his designated representative; these measurements should not be a substitute for one's own evaluation and investigation. Ski accessibility is a relative term and can have different implications and meanings depending on the individual. One should investigate fully the property as it relates to its potential ski access and determine for themselves the degree of ski access the property might have or be developed. Buyer acknowledges and agrees that neither the Seller, the Broker, the Sales Associate nor any other real estate representative of the Yellowstone Club or its related affiliates have made any warranties or representations upon which Buyer has relied concerning the ski-in ski-out accessibility of the property. The determination of the level of ski access that a property might have will be the Buyers sole determination.