

# AMERICAN SPIRIT

29 Constitution Way

| 815



YELLOWSTONE CLUB

FOYER





GREAT ROOM

# - AMERICAN SPIRIT 815 -

29 CONSTITUTION WAY

## FEATURES

6 Bedroom

7 Bathroom

6,523 sq. ft of outdoor living space in addition to nearly 7,000 sq. ft of heated livable

Ski in/Ski out access

Furnished

Views of Lone Peak, the Spanish Peaks, Pioneer Mountain

Close proximity to Rainbow Lodge and all of its amenities

Warren Miller Lodge, YC's Clubhouse, and golf course accessible via a short drive

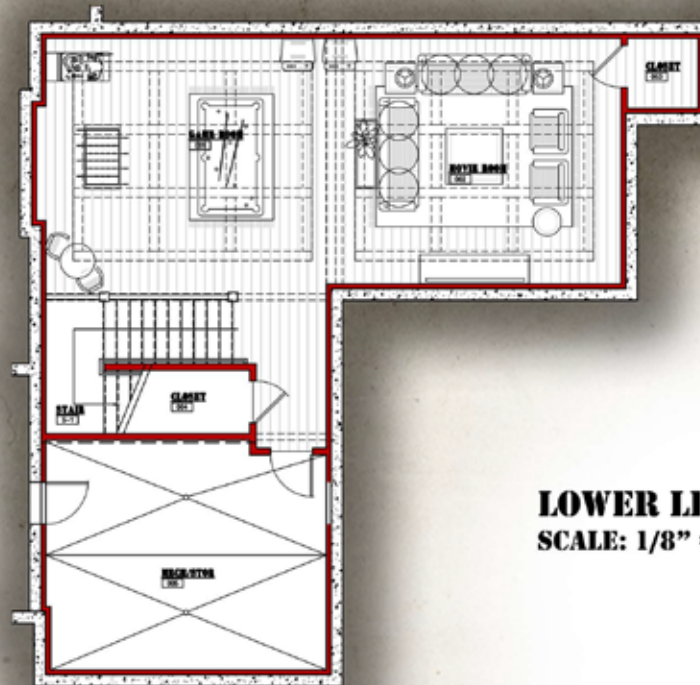
This residence is located within Yellowstone Club, a 15,200 acre private, gated community located in Big Sky, Montana. Yellowstone Club is the world's only private ski and golf community, encompassing thousands of acres of private skiing along with a championship golf course designed by Tom Weiskopf. Additionally, whether looking to savor spectacular mountain panoramas, explore the vast wilderness or enjoy high-quality amenities, Yellowstone Club offers everything from fly fishing, hiking and biking trails to fine dining and spa services. Professional SnowSports, golf and outdoor recreation programs, along with dedicated children's activities, round out the unique Montana experience that is Yellowstone Club.



KITCHEN

- AMERICAN SPIRIT 815 -

29 CONSTITUTION WAY



**LOWER LEVEL**  
**SCALE: 1/8" = 1'**

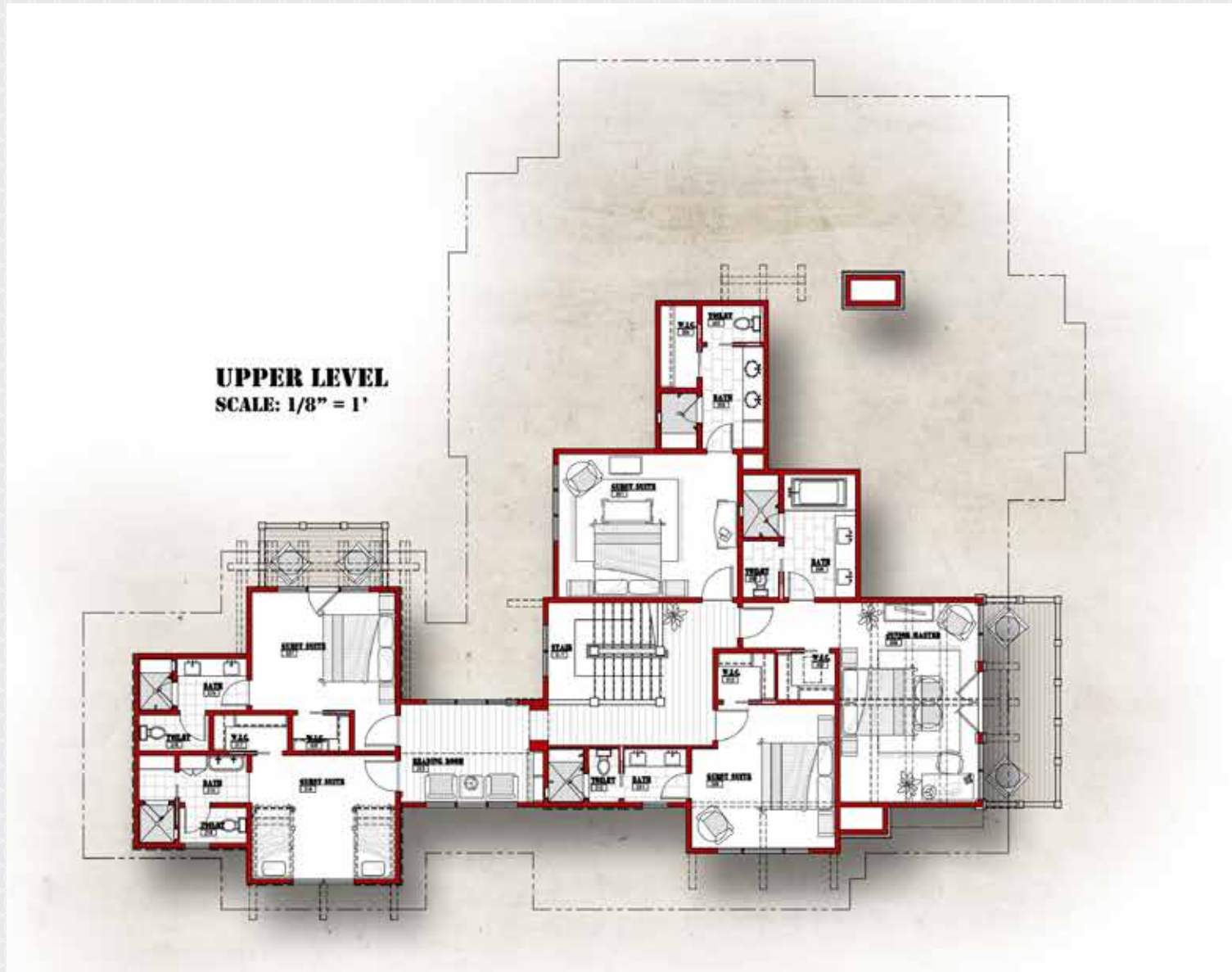
# - AMERICAN SPIRIT 815 -

29 CONSTITUTION WAY



# - AMERICAN SPIRIT 815 -

29 CONSTITUTION WAY



DINING ROOM





# MASTER BEDROOM





MASTER BATHROOM

JUNIOR MASTER  
BEDROOM



# JUNIOR MASTER BATHROOM





GUEST BEDROOM 1



OFFICE & BUNK ROOM



GUEST BEDROOM 2



GAME ROOM



FAMILY ROOM



PATIO





## YELLOWSTONE CLUB

For more information about this property and its pricing please contact YC Realty.

(888) 700-7748 | (406) 995-4900 | [yccsales@yellowstoneclub.com](mailto:yccsales@yellowstoneclub.com) | P.O. Box 161097 | Big Sky, Montana 59716

[www.yellowstoneclub.com](http://www.yellowstoneclub.com)

All information deemed reliable, but not guaranteed. All acreages and square footages are estimates. The purchase of a home or homesite does not include membership in Yellowstone Club, or any right to use the private club facilities. Ownership of a home/homesite includes an obligation to pay assessments to a property owner's association. Please ask a sales associate for details. Photographs are representational of the approximate view corridors from the home. Livable square footages listed in this marketing piece are based upon the calculation of only the heated and livable areas within the exterior walls of the property and said square footages are deemed reliable, but not guaranteed. All acreages and square footages are estimates and are provided by the Seller or his designated representative; these measurements should not be a substitute for one's own evaluation and investigation. Ski accessibility is a relative term and can have different implications and meanings depending on the individual. One should investigate fully the property as it relates to its potential ski access and determine for themselves the degree of ski access the property might have or be developed. Buyer acknowledges and agrees that neither the Seller, the Broker, the Sales Associate nor any other real estate representative of the Yellowstone Club or its related affiliates have made any warranties or representations upon which Buyer has relied concerning the ski-in ski-out accessibility of the property. The determination of the level of ski access that a property might have will be the Buyers sole determination. 8/18

