

ALPINE GREENS 716

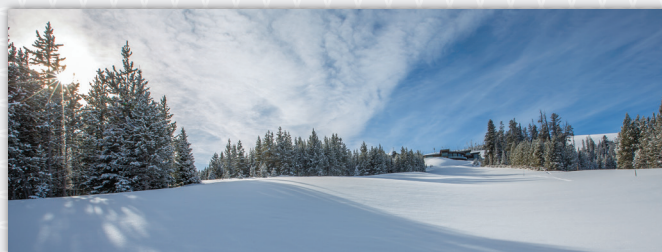
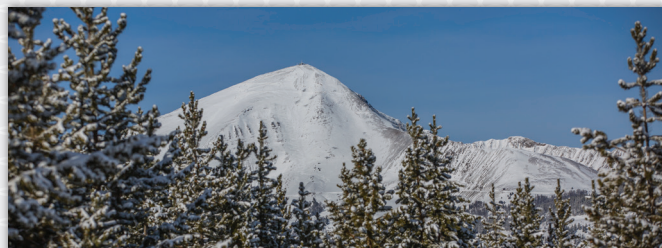
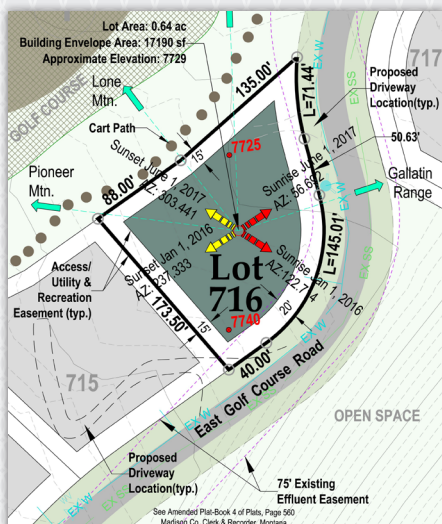


YELLOWSTONE CLUB

ALPINE GREENS 716

302 EAST GOLF COURSE RD

With its alpine setting, close proximity to the golf course Clubhouse, and unbeatable views, Alpine Greens 716 allows you to experience everything Yellowstone Club has to the fullest. YC Members know that the Yellowstone Club is much more than a private club. It's the setting for unforgettable family experiences where the beauty of the natural world governs daily life, and provides a pristine place in which to experience both solitude and camaraderie and create lasting family memories. Alpine Greens 716 is ready for construction, sitting on .64 acres with 180 degrees of mountain views, and a gently sloped hillside, Alpine Greens 716 is ideal for Members who love golf and seek a classic Montana lifestyle.



FEATURES

0.64 acres

Building envelope of 17,190 square feet

Located off of Hole 1

Views of Lone Peak, the Spanish Peaks, and the Gallatin Range

For more information about this property and its pricing please contact YC Realty.
(888) 700-7748 | (406) 995-4900 | yccsales@yellowstoneclub.com | P.O. Box 161097 | Big Sky, Montana 59716
www.yellowstoneclub.com

All information deemed reliable, but not guaranteed. All acreages and square footages are estimates. The purchase of a home or homesite does not include membership in Yellowstone Club, or any right to use the private club facilities. Ownership of a home/homesite includes an obligation to pay assessments to a property owner's association. Please ask a sales associate for details. Photographs are representational of the approximate view corridors from the home. Livable square footages listed in this marketing piece are based upon the calculation of only the heated and livable areas within the exterior walls of the property and said square footages are deemed reliable, but not guaranteed. All acreages and square footages are estimates and are provided by the Seller or his designated representative; these measurements should not be a substitute for one's own evaluation and investigation. Ski accessibility is a relative term and can have different implications and meanings depending on the individual. One should investigate fully the property as it relates to its potential ski access and determine for themselves the degree of ski access the property might have or be developed. Buyer acknowledges and agrees that neither the Seller, the Broker, the Sales Associate nor any other real estate representative of the Yellowstone Club or its related affiliates have made any warranties or representations upon which Buyer has relied concerning the ski-in ski-out accessibility of the property. The determination of the level of ski access that a property might have will be the Buyers sole determination.