

# - AMERICAN SPIRIT 875 -

12 NORTH CABIN ROAD (HOME UNDER CONSTRUCTION)



YELLOWSTONE CLUB





*View of the Spanish Peaks*

– AMERICAN SPIRIT 875 –  
12 NORTH CABIN ROAD

American Spirit 875 is part of Yellowstone Club’s American Spirit Phase III release, which expands on the extraordinary aspects of Phases I & II: close proximity to Rainbow Lodge and its amenities, convenient access to thousands of skiable acres, and breathtaking, expansive views extending from Pioneer Mountain to Lone Peak and the Spanish Peaks. American Spirit 875 is one of six single-family residences that comprise part of Phase III, and these prime-location mountain modern homes will feature front-row views of Lone Peak.

This home includes nearly 8,000 square feet of living space across three levels. Expansive views of Lone Peak fill nearly every window in the home, and indoor and outdoor living spaces complement each other to create a seamless mountain living experience. An open floor plan defines the home’s gathering spaces on the first level. The fully equipped kitchen borders the dining area, inviting breakfast nook, wet bar and great room with wood-burning fireplace. Family and friends will delight in barbecuing against the backdrop of Lone Peak on the covered outdoor deck.

The main level also houses the impressive master suite that includes a private balcony, vaulted ceilings, large bathroom, closet space, and office nook. Easily accessible from the master suite, the spacious mudroom provides a place ideal for depositing winter gear after a day on the slopes as well as a laundry room (with pantry) and a two-car garage.

The lower level of American Spirit 875 includes three additional guest bedrooms. Each space has ample storage and a private bathroom and provides space for quiet respite after a day exploring YC’s thousands of acres of private skiing. This level also has several welcoming places to gather including a family game room area, additional wet bar, and an inviting covered patio with a hot tub and fireplace. The lofted second level of the home houses an additional guest suite, bunk room, loft space, and bonus room – the possibilities for which are many.

Rainbow Lodge is within walking distance of American Spirit 875 and offers many options for neighbors to gather, eat, and recreate. Skiways wend their way through the neighborhood and make it easy to access YC’s vast terrain. Located mid-mountain, this custom residence will place you in the heart of the world’s only private ski, golf, and adventure community.



*Cross Country Skiing at YC*





Rainbow Lodge

## – AMERICAN SPIRIT 875 –

12 NORTH CABIN ROAD

### FEATURES

- Lot Size: 0.52 Acres
- Total Heated Livable Square Footage: 7,931 Sq. Ft.
- Bedrooms: 5 + 1 Bunk Room + 1 Bonus Room
- Bathrooms: 8 + 1 Powder Room
- Garage: 2 Car
- Immediate ski access
- Close proximity to Rainbow Lodge, short drive to base area
- Views of Lone Peak, Spanish Peaks, Pioneer Mountain

This residence is located within Yellowstone Club, a 13,600 acre private, gated community located in Big Sky, Montana. Yellowstone Club is the world's only private ski and golf community, encompassing thousands of acres of private skiing along with a championship golf course designed by Tom Weiskopf. Additionally, whether looking to savor spectacular mountain panoramas, explore the vast wilderness or enjoy high-quality amenities, Yellowstone Club offers everything from fly fishing, hiking and biking trails to fine dining and spa services. Professional SnowSports, golf and outdoor recreation programs, along with dedicated children's activities, round out the unique Montana experience that is Yellowstone Club.



Skiing at YC

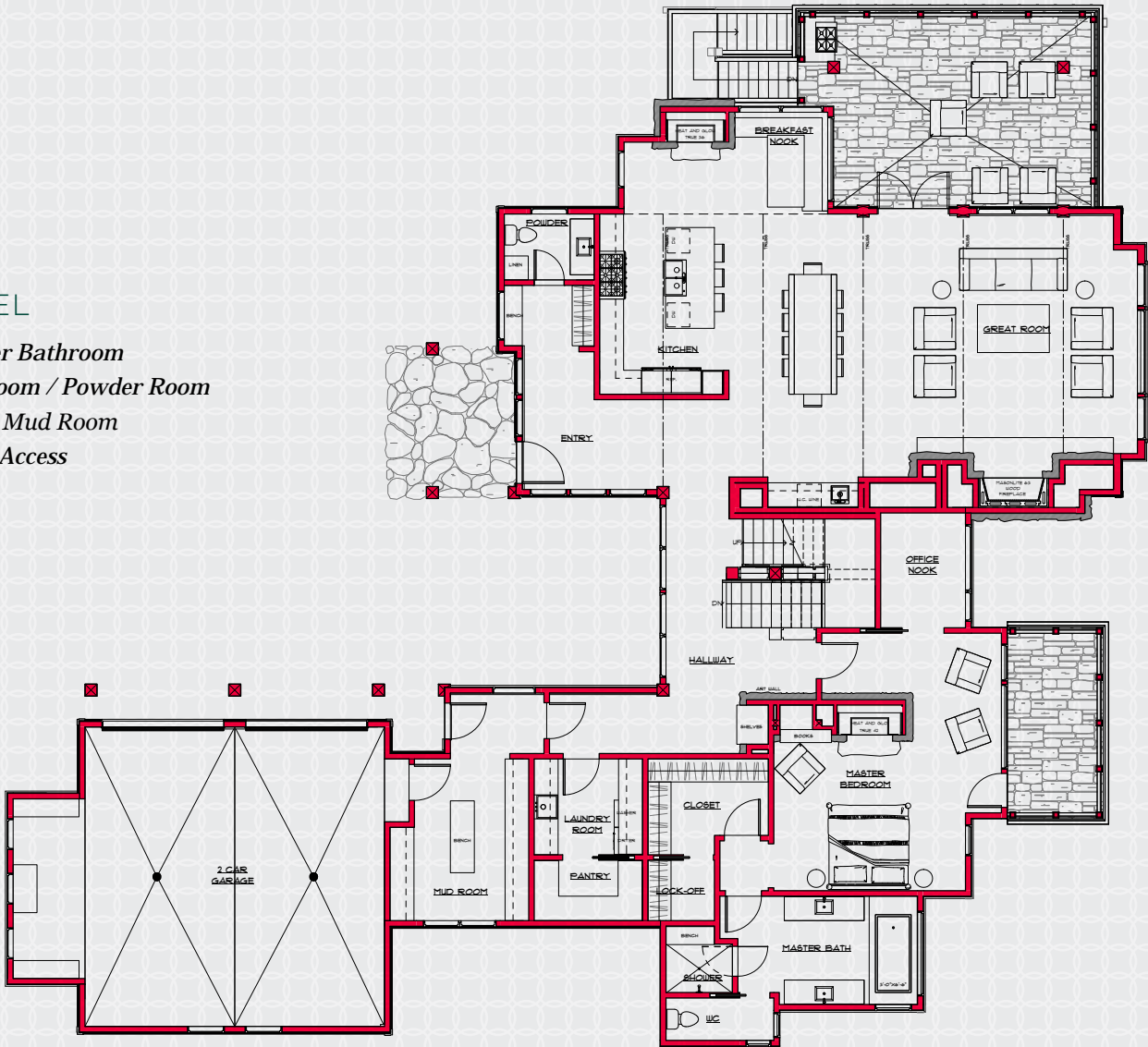


- AMERICAN SPIRIT 875 -

7,931 HEATED LIVABLE SQUARE FOOTAGE

MAIN LEVEL

Master Bedroom / Master Bathroom  
Great Room / Kitchen / Dining Room / Powder Room  
Office / Laundry Room / Mud Room  
2-Car Garage / Ski Access

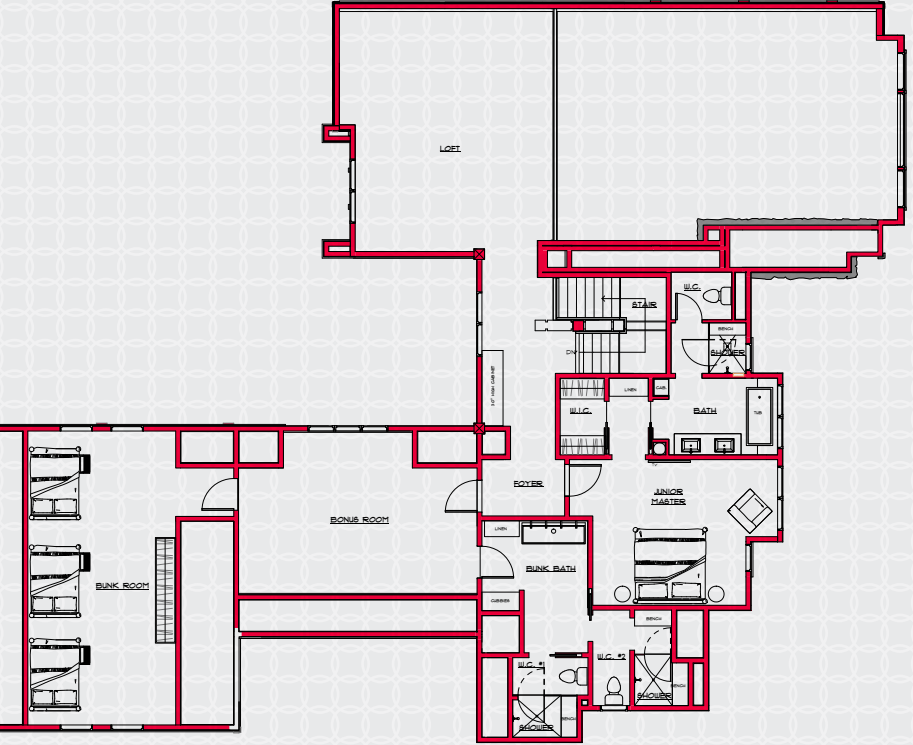


- AMERICAN SPIRIT 875 -

7,931 HEATED LIVABLE SQUARE FOOTAGE

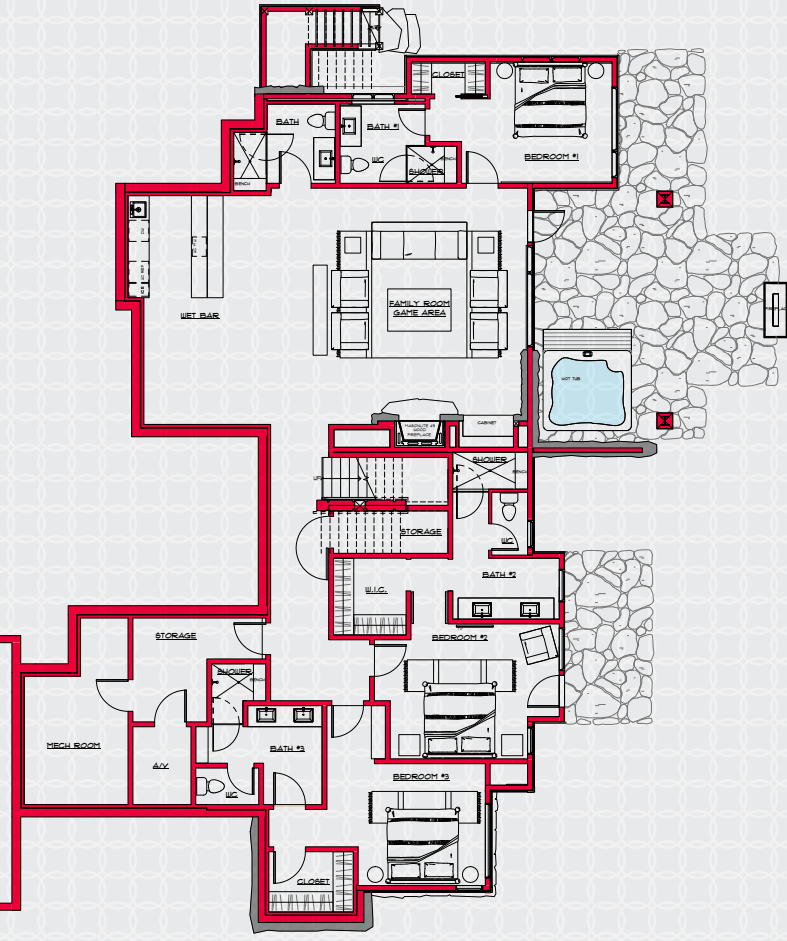
UPPER LEVEL

Guest Suite / Guest Bathroom  
Bunk Room / Bunk Bathroom  
Bonus Room / Loft



LOWER LEVEL

3 Bedrooms / 3 Bathrooms  
Family Room / Game Room / Bar / Powder Room  
Mechanical Room / Storage Room / Hot Tub





AMERICAN SPIRIT  
PHASE III



View of Lone Peak





## YELLOWSTONE CLUB

For more information about this property and its pricing please contact YC Realty.

(888) 700-7748 | (406) 995-4900 | [yccsales@yellowstoneclub.com](mailto:yccsales@yellowstoneclub.com) | P.O. Box 161097 | Big Sky, Montana 59716

[www.yellowstoneclub.com](http://www.yellowstoneclub.com)

All information deemed reliable, but not guaranteed. All acreages and square footages are estimates. The purchase of a home or homesite does not include membership in Yellowstone Club, or any right to use the private club facilities. Ownership of a home/homesite includes an obligation to pay assessments to a property owner's association. Please ask a sales associate for details. Photographs are representational of the approximate view corridors from the home. Livable square footages listed in this marketing piece are based upon the calculation of only the heated and livable areas within the exterior walls of the property and said square footages are deemed reliable, but not guaranteed. All acreages and square footages are estimates and are provided by the Seller or his designated representative; these measurements should not be a substitute for one's own evaluation and investigation. Ski accessibility is a relative term and can have different implications and meanings depending on the individual. One should investigate fully the property as it relates to its potential ski access and determine for themselves the degree of ski access the property might have or be developed. Buyer acknowledges and agrees that neither the Seller, the Broker, the Sales Associate nor any other real estate representative of the Yellowstone Club or its related affiliates have made any warranties or representations upon which Buyer has relied concerning the ski-in ski-out accessibility of the property. The determination of the level of ski access that a property might have will be the Buyers sole determination.

12/16