



SETTLEMENT | 2C
8C Preservation Way



- SETTLEMENT 2C -

8C PRESERVATION WAY

Amidst the bustling heart of the Yellowstone Club, the Settlement Neighborhood welcomes Members to a vibrant community of luxury triplex units. As the world's only private ski and golf club, the YC features an unrivaled alpine lifestyle elevated by modern luxuries. Close proximity to exhilarating adventure and base area amenities feature endless experiences to enjoy a life well lived. Designed by Bozeman's Brechbuhler Architects, the home at 8C Preservation Way features a refined mountain sanctuary highlighting light and space. Modern interiors blend effortlessly with rustic elements, reconnecting the space to the roots of the land. Natural textures of stone, exposed timber beams, and wood paneling inspire a sense of tranquility throughout all living spaces.

Effortless alpine elegance welcomes Owners to the bright and airy home, where the crackle of a wood-burning fireplace enchants the open concept living space. Lighting the great room, a star pendant chandelier transforms the space into a celestial haven. Vaulted ceilings tower over a cozy sitting area, perfect for enjoying hot cocoa on snowy nights. White cabinets and marble countertops reflect light in the kitchen, where state-of-the-art appliances and two dishwashers make culinary expression smooth and carefree. Whether enjoying meals at the countertop seating at the island or around the dining table, memories are best made in the heart of the home. A covered porch offers close connection to nature, drawing fresh air into the main living space, as French doors open to an outdoor lounge and dining area. A mudroom with a powder room and closet storage offers access to the garage, making a seamless transition to the slopes.



A secondary entertaining space, three bedrooms, a powder room, and a laundry room can be found on the home's lower level. There is also a rec room with a wet bar and a beverage fridge offers convenience for guests who are enjoying a competitive round of foosball. Tucked around a fireplace and television, a lounge offers a comfortable space for family movie nights. Each of the bedrooms offer access to the covered lower patio, where a hot tub offers relaxation and rejuvenation after a day on the slopes. The first bedroom features a private stay with closet storage and an ensuite bathroom. The second bedroom features a large space with two beds, closet storage, and an ensuite bathroom. The third bedroom is a family favorite, featuring two sets of timber bunks, closet storage, and an ensuite bathroom.

The upper level features the primary suite and a multi-purpose room. Vaulted ceilings in the primary suite open the room to light and space as exposed timber beams act as art. A fireplace warms the room, as a sitting lounge offers a peaceful nook for a quiet repose. Two walk-in closets and an ensuite bathroom with a soaking tub offer luxury amenities, filling the room with the tranquility of an elevated lifestyle. French pocket doors open to the multi purpose room, ideal for those looking for a secluded space to work or for growing families looking to have a close bedroom. An ensuite bathroom and a wardrobe complete the room, broadening its possibilities.

Thousands of acres of Private Powder™ ski trails and the championship Tom Weiskopf-designed golf course entice those who call the Yellowstone Club home. But it is the warmth of the welcoming community that makes it feel like home. As sweeping vistas and the warmth of wood-burning fireplaces elevate each day, Owner's of Settlement 2C can immerse themselves in a luxury alpine lifestyle as they make cherished memories with loved ones.

This residence is located within Yellowstone Club, a 15,200 acre private, gated community located in Big Sky, Montana. Yellowstone Club is the world's only private ski and golf community, encompassing thousands of acres of private skiing along with a championship golf course designed by Tom Weiskopf. Additionally, whether looking to savor spectacular mountain panoramas, explore the vast wilderness or enjoy high-quality amenities, Yellowstone Club offers everything from fly fishing, hiking and biking trails to fine dining and spa services. Professional SnowSports, golf and outdoor recreation programs, along with dedicated children's activities, round out the unique Montana experience that is Yellowstone Club.

FEATURES

4,370 square feet

5 bedrooms

7 bathrooms

2-car garage

Lower patio hot tub

Panoramic vistas of Pioneer, Eglise, and valley views

Close proximity to ski lifts and base area amenities



GREAT ROOM



GREAT ROOM



KITCHEN



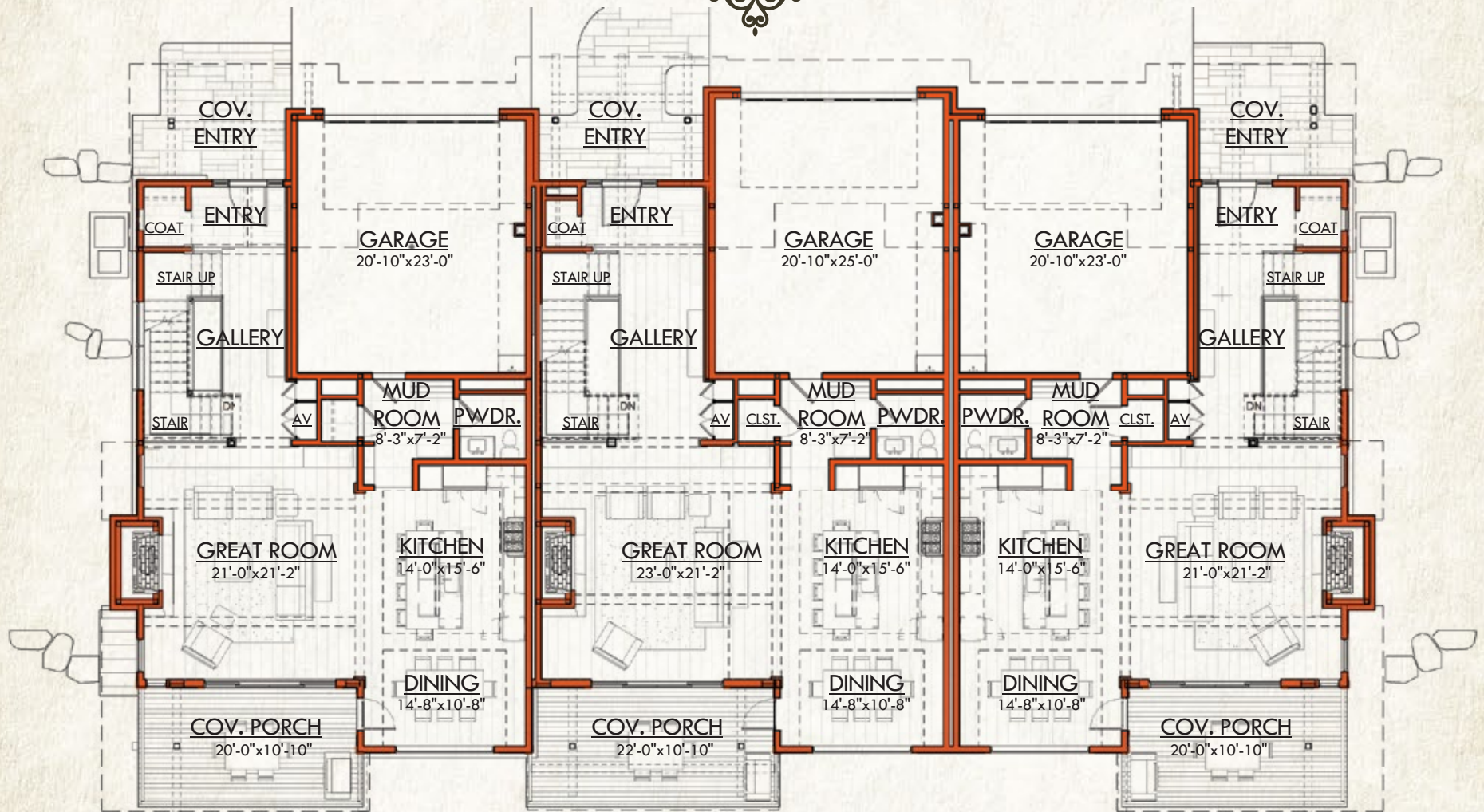


DINING



MAIN FLOOR DECK

MAIN LEVEL



UNIT A

Main Level : 1,354 Sq Ft
4,370 Total Heated Livable Sq Ft

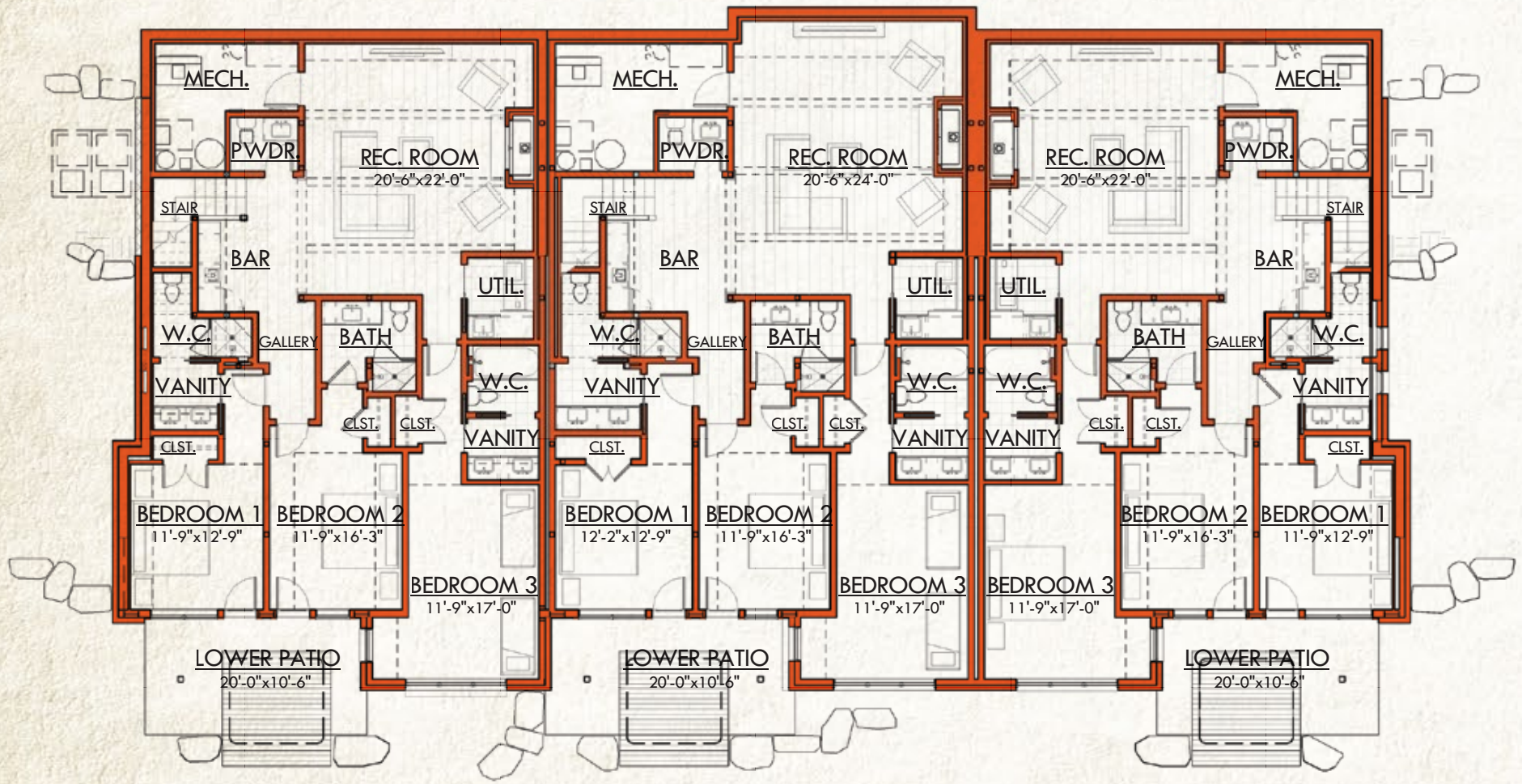
UNIT B

Main Level: 1,451 Sq Ft
4,597 Total Heated Livable Sq Ft

UNIT C

Main Level : 1,354 Sq Ft
4,370 Total Heated Livable Sq Ft

LOWER LEVEL



UNIT A

Lower Level : 1,855 Sq Ft

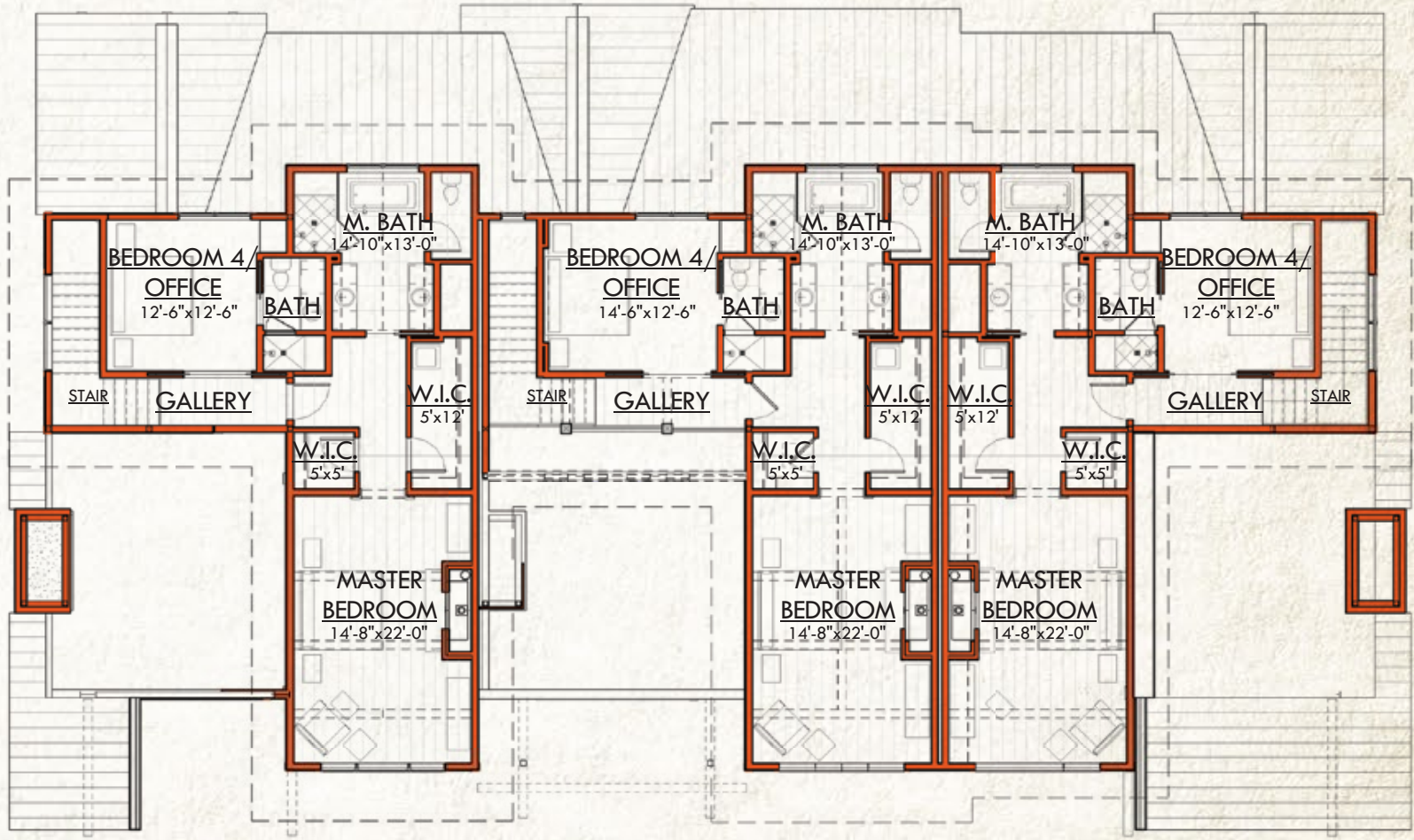
UNIT B

Lower Level: 1,950 Sq Ft

UNIT C

Lower Level : 1,855 Sq Ft

UPPER LEVEL



UNIT A

Upper Level : 1.160 Sq Ft

UNIT B

Upper Level : 1.196 Sq Ft

UNIT C

Upper Level : 1.160 Sq Ft



MASTER SUITE





UPPER LEVEL GUEST SUITE





LOWER LEVEL FAMILY ROOM



WET BAR AND LIVING ROOM



GUEST BEDROOM



POWDER ROOM



GUEST BATHROOM



WET BAR AND LIVING ROOM



GUEST BEDROOM



HOT TUB PATIO



GUEST BEDROOM







YELLOWSTONE CLUB®

For more information about this property and its pricing please contact YC Realty.

(888) 700-7748 | (406) 995-4900 | yccsales@yellowstoneclub.com | P.O. Box 161097 | Big Sky, Montana 59716

www.yellowstoneclub.com

All information deemed reliable, but not guaranteed. All acreages and square footages are estimates. The purchase of a home or homesite does not include membership in Yellowstone Club, or any right to use the private club facilities. Ownership of a home/homesite includes an obligation to pay assessments to a property owner's association. Please ask a sales associate for details. Photographs are representational of the approximate view corridors from the home. Livable square footages listed in this marketing piece are based upon the calculation of only the heated and livable areas within the exterior walls of the property and said square footages are deemed reliable, but not guaranteed. All acreages and square footages are estimates and are provided by the Seller or his designated representative; these measurements should not be a substitute for one's own evaluation and investigation. Ski accessibility is a relative term and can have different implications and meanings depending on the individual. One should investigate fully the property as it relates to its potential ski access and determine for themselves the degree of ski access the property might have or be developed. Buyer acknowledges and agrees that neither the Seller, the Broker, the Sales Associate nor any other real estate representative of the Yellowstone Club or its related affiliates have made any warranties or representations upon which Buyer has relied concerning the ski-in ski-out accessibility of the property. The determination of the level of ski access that a property might have will be the Buyers sole determination. 12/24

