

YELLOWSTONE CLUB®

EGLISE CHALET | 4 A&B

- EGLISE CHALET 4 A&B -

The Eglise expansion at Yellowstone Club has done much more than simply expand the skiable acres at the Club. The creation of the Eglise Chalets, a complex of 22 units across 11 buildings, boosts the Club's offerings of world-class, ski-in/ski-out residences. These exceptional duplexes are nestled into the base of Eglise, forming their own tight-knit neighborhood, while still remaining a short walk, drive, or Gondola ride from the lively Village area and the Warren Miller Lodge.

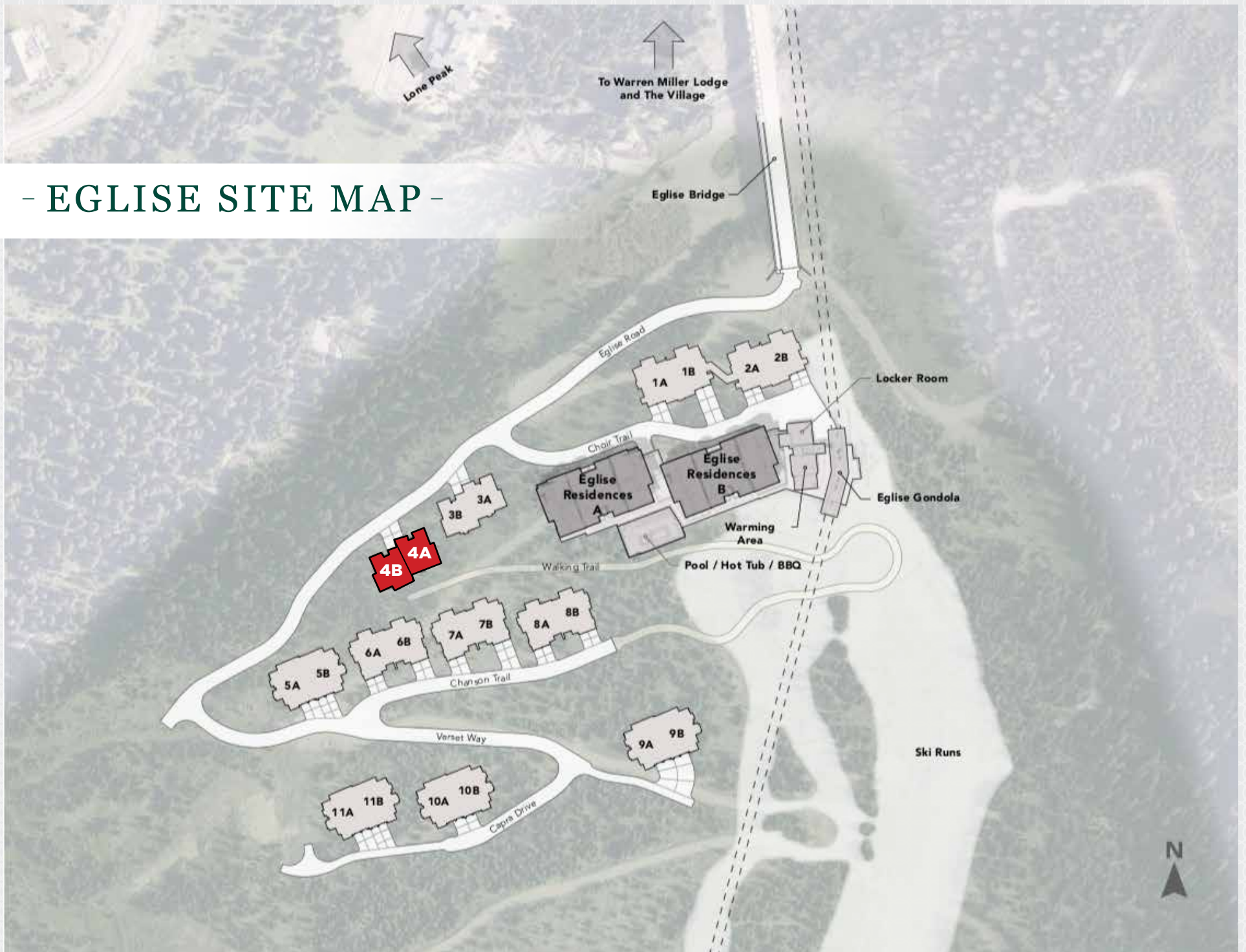
Eglise Chalet 4 consists of two condominiums, each spanning over 7,300 square feet of living space across four levels. Privacy and soundproofing are ensured, thanks to double thickness of any shared walls—these units live like its own spacious home. With its thoughtful mix of indoor and outdoor spaces, incredible location, and immense views, Eglise Chalet 4 captures the essence of southwest Montana and is the perfect home for enjoying all that Yellowstone Club has to offer. Our state-of-the-art gondola, adjacent to Chalets, gives you direct access to skiing and year round recreation.

Additionally, enjoy camaraderie out your door at the Eglise Community Pool and Grill. Located in the heart of the Eglise community, Chalet owners will have access to this tranquil slopeside amenity for use in both the summer and winter. Join your neighbors for grilling dinner and roasting marshmallows by the fire pit, or soak in the large hot tub after a chilly day on the slopes. The 15' x 30' Eglise Pool is also south facing, bringing added warmth to the family fun.

Living slope-side most certainly has its perks: most notable, of course, is the adjacent skiing! Mountainside living also offers a chance to experience the changing colors through the seasons, to watch the neighboring wildlife stroll by, and to feel the warm summer air gently cool in the long evenings. Life on Eglise offers all this, plus the vibrant hustle of being connected to the lively base area and its countless amenities.

The new offerings within Eglise Chalets are a sign of the exciting growth at the Yellowstone Club. The units feel both fresh and timeless, and strive to carefully preserve the spirit of the Club, one founded in togetherness, natural beauty, and outdoor adventures.

- EGLISE SITE MAP -



- EGLISE CHALET 4 A&B -

FEATURES

Four levels of living space

6 bedrooms

7 bathrooms + 1 powder room

7,396 square feet of indoor living space

2-car garage

Multiple outdoor living areas

Views of Lone Peak, Pioneer Mountain, Andesite Mountain

This residence is located within Yellowstone Club, a 15,200 acre private, gated community located in Big Sky, Montana. Yellowstone Club is the world's only private ski and golf community, encompassing thousands of acres of private skiing along with a championship golf course designed by Tom Weiskopf. Additionally, whether looking to savor spectacular mountain panoramas, explore the vast wilderness or enjoy high-quality amenities, Yellowstone Club offers everything from fly fishing, hiking and biking trails to fine dining and spa services. Professional SnowSports, golf and outdoor recreation programs, along with dedicated children's activities, round out the unique Montana experience that is Yellowstone Club.



Eglise pool, hot tub and bbq area, future development ghosted in place.



Materials & landscaping are for design intent and may vary.



INTERIOR
RENDERINGS



INTERIOR
RENDERINGS

- EGLISE CHALET 4A -
LOWER LEVEL



- EGLISE CHALET 4 A -
SECOND LEVEL



- EGLISE CHALET 4 A -
MAIN LEVEL



- EGLISE CHALET 4A -
UPPER LEVEL



- EGLISE CHALET 4B -
LOWER LEVEL



- EGLISE CHALET 4B -
SECOND LEVEL



- EGLISE CHALET 4B -
MAIN LEVEL

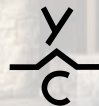


- EGLISE CHALET 4B -
UPPER LEVEL



EXTERIOR RENDERING





YELLOWSTONE CLUB®

For more information about this property and its pricing please contact YC Realty.

(888) 700-7748 | (406) 995-4900 | ycsales@yellowstoneclub.com | P.O. Box 161097 | Big Sky, Montana 59716

www.yellowstoneclub.com

All information deemed reliable, but not guaranteed. All acreages and square footages are estimates. The purchase of a home or homesite does not include membership in Yellowstone Club, or any right to use the private club facilities. Ownership of a home/homesite includes an obligation to pay assessments to a property owner's association. Please ask a sales associate for details. Photographs are representational of the approximate view corridors from the home. Livable square footages listed in this marketing piece are based upon the calculation of only the heated and livable areas within the exterior walls of the property and said square footages are deemed reliable, but not guaranteed. All acreages and square footages are estimates and are provided by the Seller or his designated representative; these measurements should not be a substitute for one's own evaluation and investigation. Ski accessibility is a relative term and can have different implications and meanings depending on the individual. One should investigate fully the property as it relates to its potential ski access and determine for themselves the degree of ski access the property might have or be developed. Buyer acknowledges and agrees that neither the Seller, the Broker, the Sales Associate nor any other real estate representative of the Yellowstone Club or its related affiliates have made any warranties or representations upon which Buyer has relied concerning the ski-in ski-out accessibility of the property. The determination of the level of ski access that a property might have will be the Buyers sole determination.