

YELLOWSTONE CLUB®

EGLISE CHALET | 11B

– EGLISE CHALET 11B –

The Eglise expansion at the Yellowstone Club has done much more than simply expand the skiable acres at the Club. The creation of the Eglise Chalets, a complex of 22 units across 11 buildings, boosts the Club's offerings of world-class, ski-in/ski-out residences. These exceptional duplexes are nestled into the base of Eglise, forming their own tight-knit neighborhood, while still remaining a short walk, drive, or Gondola ride from the lively Village area and the Warren Miller Lodge.

Eglise 11B shares a structure with one other condominium, and spans over 8,700 square feet of living space across three levels. Privacy and soundproofing are ensured, thanks to double thickness of any shared walls—this unit lives like its own spacious home. From the main level entryway, an open hallway leads straight to the great room, where a two-story wall of windows frames views of the Club, Lone Peak, and beyond. This room is the ideal spot for entertaining, enhanced with a grand fireplace, nearby bar and wine storage, and walkout access to the covered patio. Other gathering spaces on the main level, including the dining room and spacious kitchen, complete with a wing for catering, help make this unit the perfect place to entertain. Separate from these gathering spaces lies the owners' suite, finished with design and comfort in mind: spacious bathroom, closet, and seating area, plus gorgeous views.

A central staircase off the entryway leads to the two other levels of this unit. The lower level is home to three additional guest suites, including one bunk room, each with a full bathroom. A large rec room is perfect for movie nights, while the flex space is poised to become a home gym or theater. Several rooms on this level include walkout access to the lower-level patio and its seating areas and recessed hot tub. A trip back up the stairs leads to the upper level, home to two additional bedrooms, bathrooms, and a comfortable seating corner.

With its thoughtful mix of indoor and outdoor spaces, slopeside location, and immense views, this residence captures the essence of southwest Montana and is the perfect home for enjoying all the Yellowstone Club has to offer.



- EGLISE CHALET 11B -

FEATURES

Three levels of living space

6 bedrooms

6 bathrooms + 2 powder rooms

8,723 square feet of indoor living space

Ski room and laundry adjacent to 2-car garage

Wine room, bar area

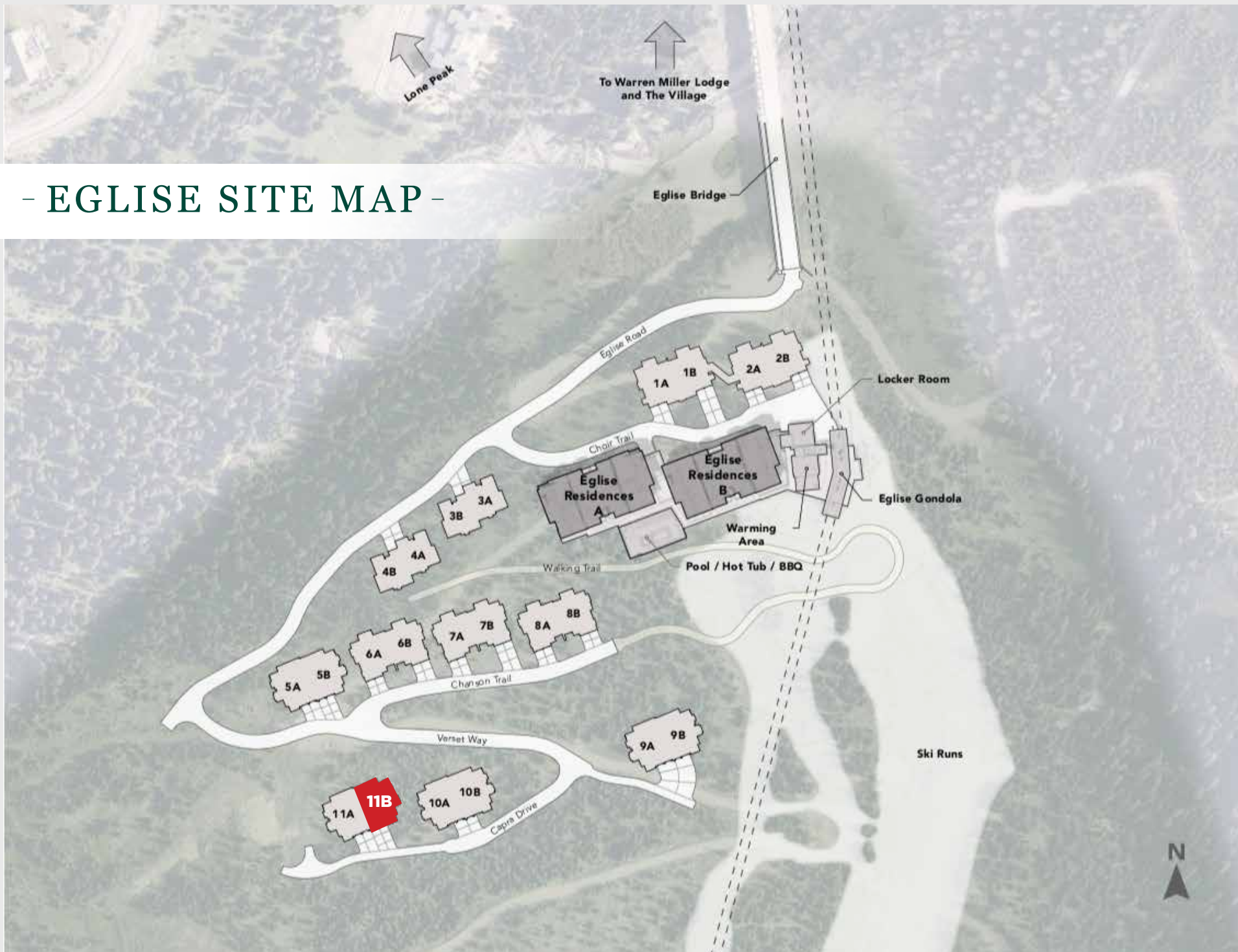
Views of Lone Mountain, Pioneer Mountain

This residence is located within Yellowstone Club, a 15,200 acre private, gated community located in Big Sky, Montana. Yellowstone Club is the world's only private ski and golf community, encompassing thousands of acres of private skiing along with a championship golf course designed by Tom Weiskopf. Additionally, whether looking to savor spectacular mountain panoramas, explore the vast wilderness or enjoy high-quality amenities, Yellowstone Club offers everything from fly fishing, hiking and biking trails to fine dining and spa services. Professional SnowSports, golf and outdoor recreation programs, along with dedicated children's activities, round out the unique Montana experience that is Yellowstone Club.





- EGLISE SITE MAP -



- EGLISE CHALET 11B -
MAIN LEVEL



MAIN LEVEL FLOOR PLAN
SCALE: 3/32" = 1'

- EGLISE CHALET 11B -
LOWER LEVEL



LOWER LEVEL FLOOR PLAN
SCALE: 3/32" = 1'

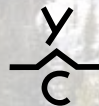
- EGLISE CHALET 11B -
UPPER LEVEL



UPPER LEVEL FLOOR PLAN
SCALE: 3/32" = 1'







YELLOWSTONE CLUB®

For more information about this property and its pricing please contact YC Realty.

(888) 700-7748 | (406) 995-4900 | yccsales@yellowstoneclub.com | P.O. Box 161097 | Big Sky, Montana 59716

www.yellowstoneclub.com

All information deemed reliable, but not guaranteed. All acreages and square footages are estimates. The purchase of a home or homesite does not include membership in Yellowstone Club, or any right to use the private club facilities. Ownership of a home/homesite includes an obligation to pay assessments to a property owner's association. Please ask a sales associate for details. Photographs are representational of the approximate view corridors from the home. Livable square footages listed in this marketing piece are based upon the calculation of only the heated and livable areas within the exterior walls of the property and said square footages are deemed reliable, but not guaranteed. All acreages and square footages are estimates and are provided by the Seller or his designated representative; these measurements should not be a substitute for one's own evaluation and investigation. Ski accessibility is a relative term and can have different implications and meanings depending on the individual. One should investigate fully the property as it relates to its potential ski access and determine for themselves the degree of ski access the property might have or be developed. Buyer acknowledges and agrees that neither the Seller, the Broker, the Sales Associate nor any other real estate representative of the Yellowstone Club or its related affiliates have made any warranties or representations upon which Buyer has relied concerning the ski-in ski-out accessibility of the property. The determination of the level of ski access that a property might have will be the Buyers sole determination.

12/20