



YELLOWSTONE CLUB®

ALPINE GREENS | 764



NORTHWEST



ENTRYWAY



ENTRYWAY



KITCHEN



LIVING ROOM

- ALPINE GREENS 764 -

12,154 TOTAL HEATED LIVABLE SQUARE FOOTAGE

Bring the friends—there's room enough for everyone. Custom Residence 764, in the Alpine Greens neighborhood, is an expansive retreat, filled with imaginative gathering spaces, serene private spaces, and a perpetual eye to the splendor of the natural setting. With over 12,000 square feet of living space across two levels, this home lives like its own private retreat.

The sweeping driveway brings guests to the formal entryway, where a wide hallway opens to the kitchen, dining, and living room, all of which flow effortlessly together. This is the hub of the home, where guests will gather and conversation will spark. This upper level also features the luxurious owners' suite. Here, the fireplace, private deck, and spacious bathroom and closet all combine to create a true getaway, a refuge from a busy life. Three additional bedrooms plus bunk room—each with private deck and bathroom—all lie on the opposite side of the main level. The main level also features a large mud room, laundry room, powder room, breakfast nook, and walkout access to the covered deck and outdoor kitchen space.

Stairs off the living room descend to the lower level, home to an incredible array of leisure activities and comfortable accommodations. Amenities here include a home theater, sports court, and rec room with pool table. There is no shortage of entertainment options! The fully stocked ski room includes full bathroom and spacious lockers, and has walkout access to the hot tub and fire pit area—this is an apres-ski wonderland. Four additional lower-level bedrooms plus bunk room offer privacy and comfort for friends and family.

With its walls of floor-to-ceiling windows, this custom residence never loses sight of the pristine setting—the beauty of Southwest Montana is in no small part what makes this residence so special. This home is but a short drive from the Golf Course Clubhouse, and overlooks Hole #14—a perfect summer vantage point. In the winter months, prime skiing at Eglise and Pioneer, as well as the bustle of the Village, are all a short drive away.



- ALPINE GREENS 764 -

12,154 TOTAL HEATED LIVABLE SQUARE FOOTAGE

FEATURES

8 Bedrooms

11 Bathrooms

12,154 sq. ft.

1.37 Acres

Sports court, theatre, and ski room

Views of Lone Peak, Pioneer Mountain,
and Spanish Peaks

Outdoor living areas

New Construction

Views of golf course hole #14

Ski Access

This residence is located within Yellowstone Club, a 15,200 acre private, gated community located in Big Sky, Montana. Yellowstone Club is the world's only private ski and golf community, encompassing thousands of acres of private skiing along with a championship golf course designed by Tom Weiskopf. Additionally, whether looking to savor spectacular mountain panoramas, explore the vast wilderness or enjoy high-quality amenities, Yellowstone Club offers everything from fly fishing, hiking and biking trails to fine dining and spa services. Professional SnowSports, golf and outdoor recreation programs, along with dedicated children's activities, round out the unique Montana experience that is Yellowstone Club.



Main Level Entrance / Driveway

UPPER LEVEL
ENTRANCE

YC LOT 764

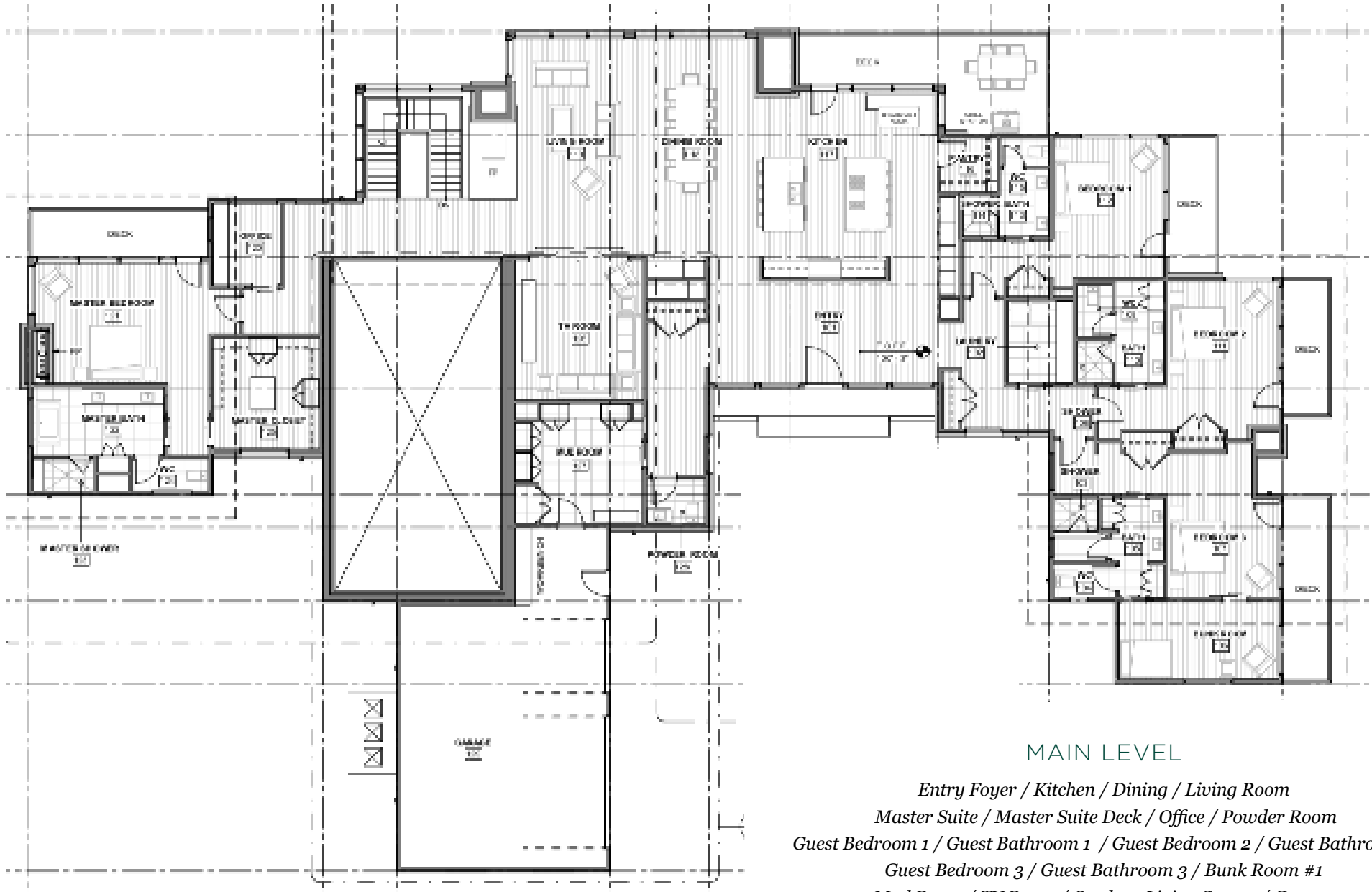
ST. JOHN'S

5 Golf Course Rd



- ALPINE GREENS 764 -

12,154 TOTAL HEATED LIVABLE SQUARE FOOTAGE

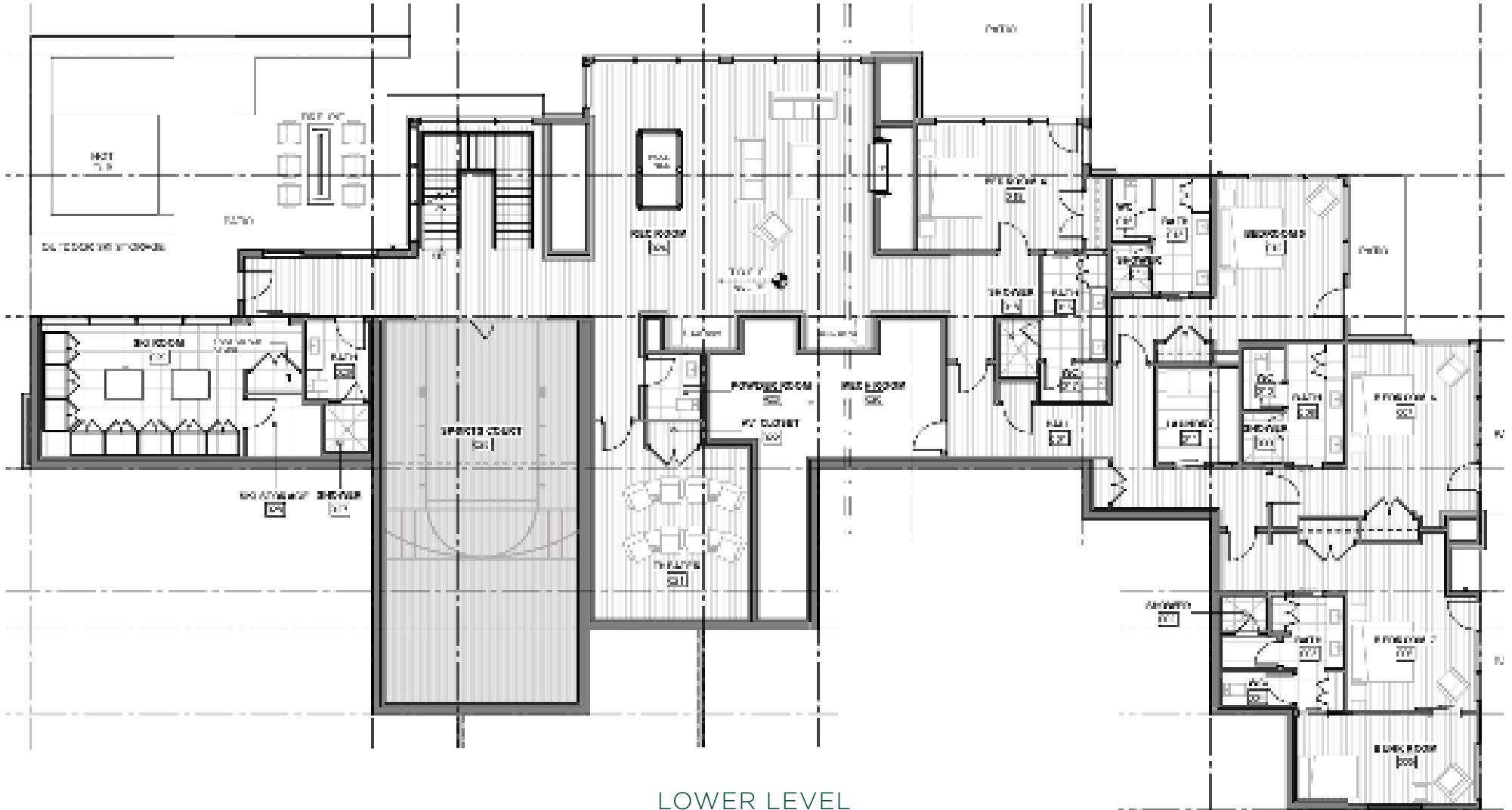


MAIN LEVEL

- Entry Foyer / Kitchen / Dining / Living Room*
- Master Suite / Master Suite Deck / Office / Powder Room*
- Guest Bedroom 1 / Guest Bathroom 1 / Guest Bedroom 2 / Guest Bathroom 2*
- Guest Bedroom 3 / Guest Bathroom 3 / Bunk Room #1*
- Mud Room / TV Room / Outdoor Living Spaces / Garage*

- ALPINE GREENS 764 -

12,154 TOTAL HEATED LIVABLE SQUARE FOOTAGE



LOWER LEVEL

*Guest Bedroom 4 / Guest Bathroom 4 / Guest Bedroom 5 / Guest Bathroom 5
Guest Bedroom 6 / Guest Bathroom 6 / Guest Bedroom 7 / Guest Bathroom 7 / Bunk Room #2
Rec Room / Sports Court / Theater / Ski Room + Bathroom / Hot tub & Fire Pit Patio
Powder Room / Mechanical Room*



WEST



STAIRWAY / WET BAR



LOWER LIVING ROOM



MASTER BEDROOM



GUEST SUITE



SKI ROOM



SKI ROOM VIEWS

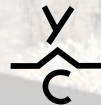


INDOOR SPORTS COURT



THEATER

SOUTH EAST



YELLOWSTONE CLUB®

For more information about this property and its pricing please contact YC Realty.

(888) 700-7748 | (406) 995-4900 | yccsales@yellowstoneclub.com | P.O. Box 161097 | Big Sky, Montana 59716

www.yellowstoneclub.com

All information deemed reliable, but not guaranteed. All acreages and square footages are estimates. The purchase of a home or homesite does not include membership in Yellowstone Club, or any right to use the private club facilities. Ownership of a home/homesite includes an obligation to pay assessments to a property owner's association. Please ask a sales associate for details. Photographs are representational of the approximate view corridors from the home. Livable square footages listed in this marketing piece are based upon the calculation of only the heated and livable areas within the exterior walls of the property and said square footages are deemed reliable, but not guaranteed. All acreages and square footages are estimates and are provided by the Seller or his designated representative; these measurements should not be a substitute for one's own evaluation and investigation. Ski accessibility is a relative term and can have different implications and meanings depending on the individual. One should investigate fully the property as it relates to its potential ski access and determine for themselves the degree of ski access the property might have or be developed. Buyer acknowledges and agrees that neither the Seller, the Broker, the Sales Associate nor any other real estate representative of the Yellowstone Club or its related affiliates have made any warranties or representations upon which Buyer has relied concerning the ski-in ski-out accessibility of the property. The determination of the level of ski access that a property might have will be the Buyers sole determination.