



YELLOWSTONE CLUB



ALPINE GREENS | 761

- ALPINE GREENS 761 -

7,290 TOTAL HEATED LIVABLE SQUARE FOOTAGE

The Lower Alpine Greens neighborhood is among the newest offerings at the Yellowstone Club. This quiet corner of the Club lives large: with its incredible views of Lone Peak and Pioneer Mountain, the Southwest Montana scenery features prominently in all lots on property. Custom Residence 761 takes full advantage of its location with a modern design that frames views, collects sunlight, and reinterprets mountain architecture for the current era. Alpine Greens 761 sits close to many beloved features of the Club, including the Tom Weiskopf-designed 18-hole golf course, Pioneer and Eglise Mountains and their famed stashes of Private Powder, and the countless amenities of the base area village. This home is designed for year-round enjoyment of all the Club has to offer.

With over 7,000 square feet of living space, plus additional outdoor living spaces, Alpine Greens 761 is the perfect getaway for even the largest groups of friends and family. The home's six bedrooms each include a private bathroom; several bedrooms open to private patios ideal for passing quiet afternoons. This home also includes many gathering spaces, including the great room, where the gentle shed roof mimics the ridgeline of Pioneer Mountain—windows trace the slope to bring in maximum views. The L-shaped kitchen maintains an open feel; family members will congregate at both the counter-height seating and the more formal dining room.

Custom touches throughout the home include the ski room, wet bar, elevator, and ample storage. Patio spaces on several sides of the house make it possible to follow the sunbeams throughout the day, no matter the season. With its brand-new construction and professional design, Alpine Greens 761 exemplifies the current trends in Club architecture while remaining true to the important ideal in mountain design that nature always comes first.

FEATURES

6 Bedroom

8 Bathrooms

7,290 sq. ft. of outdoor living space

Ski room

Views of Lone Peak, Pioneer Ridge,
Gallatin Range, and Cedar Mountain

Elevator

New Construction

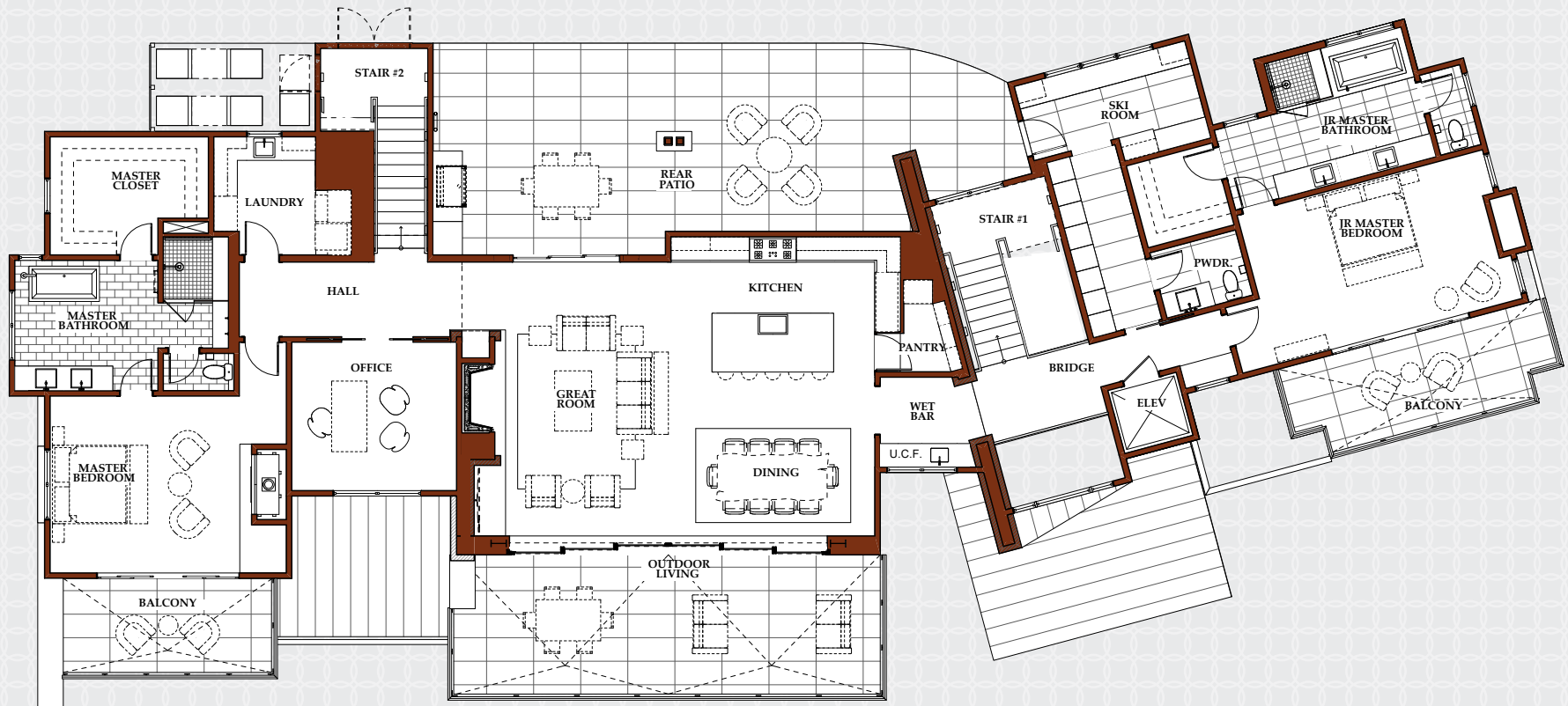
This residence is located within Yellowstone Club, a 15,200 acre private, gated community located in Big Sky, Montana. Yellowstone Club is the world's only private ski and golf community, encompassing thousands of acres of private skiing along with a championship golf course designed by Tom Weiskopf. Additionally, whether looking to savor spectacular mountain panoramas, explore the vast wilderness or enjoy high-quality amenities, Yellowstone Club offers everything from fly fishing, hiking and biking trails to fine dining and spa services. Professional SnowSports, golf and outdoor recreation programs, along with dedicated children's activities, round out the unique Montana experience that is Yellowstone Club.

GREAT ROOM RENDERING



- ALPINE GREENS 761 -

7,290 TOTAL HEATED LIVABLE SQUARE FOOTAGE

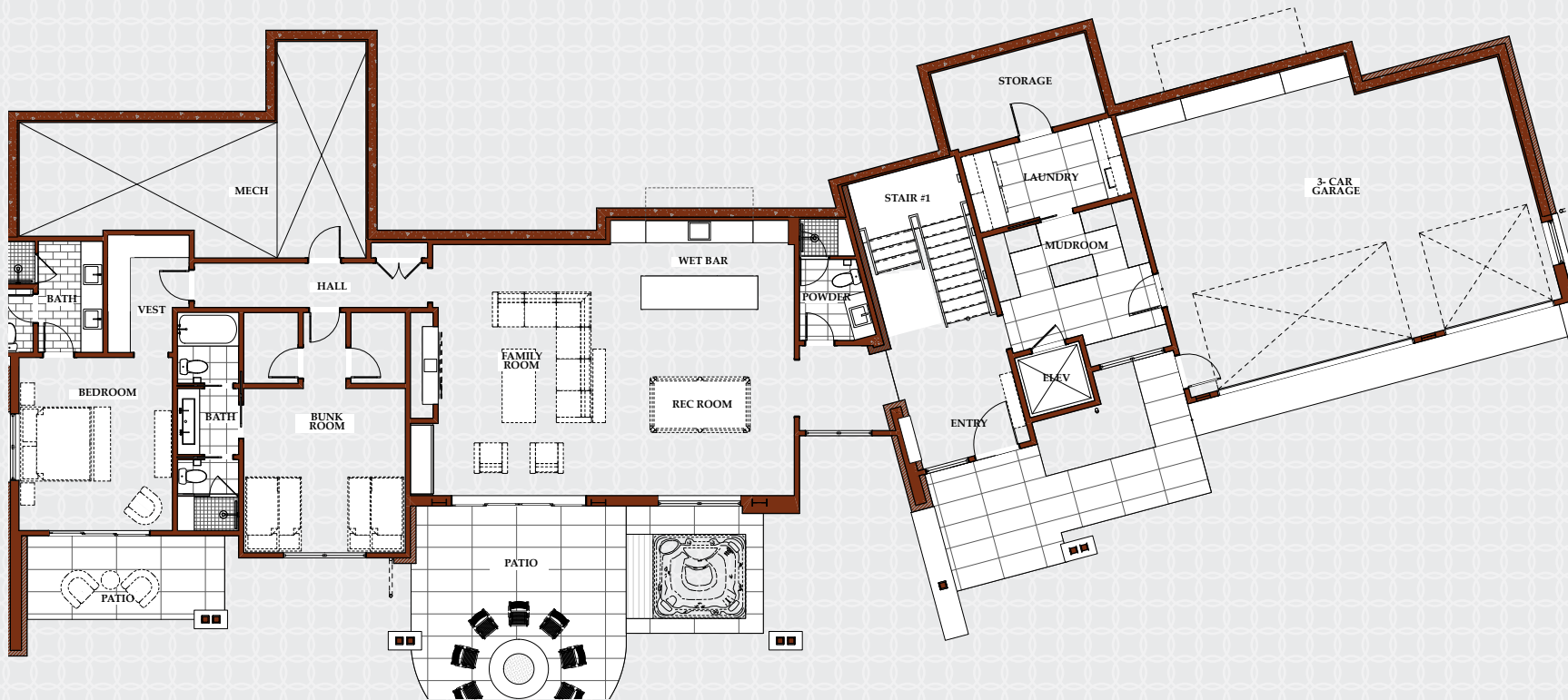


MAIN LEVEL

*Kitchen / Dining / Great Room / Master Suite with Balcony
Powder Room / Office / Jr. Master Suite with Balcony / Ski Room
Bridge / Wet Bar / Outdoor Living Space / Rear Patio*

- ALPINE GREENS 761 -

7,290 TOTAL HEATED LIVABLE SQUARE FOOTAGE

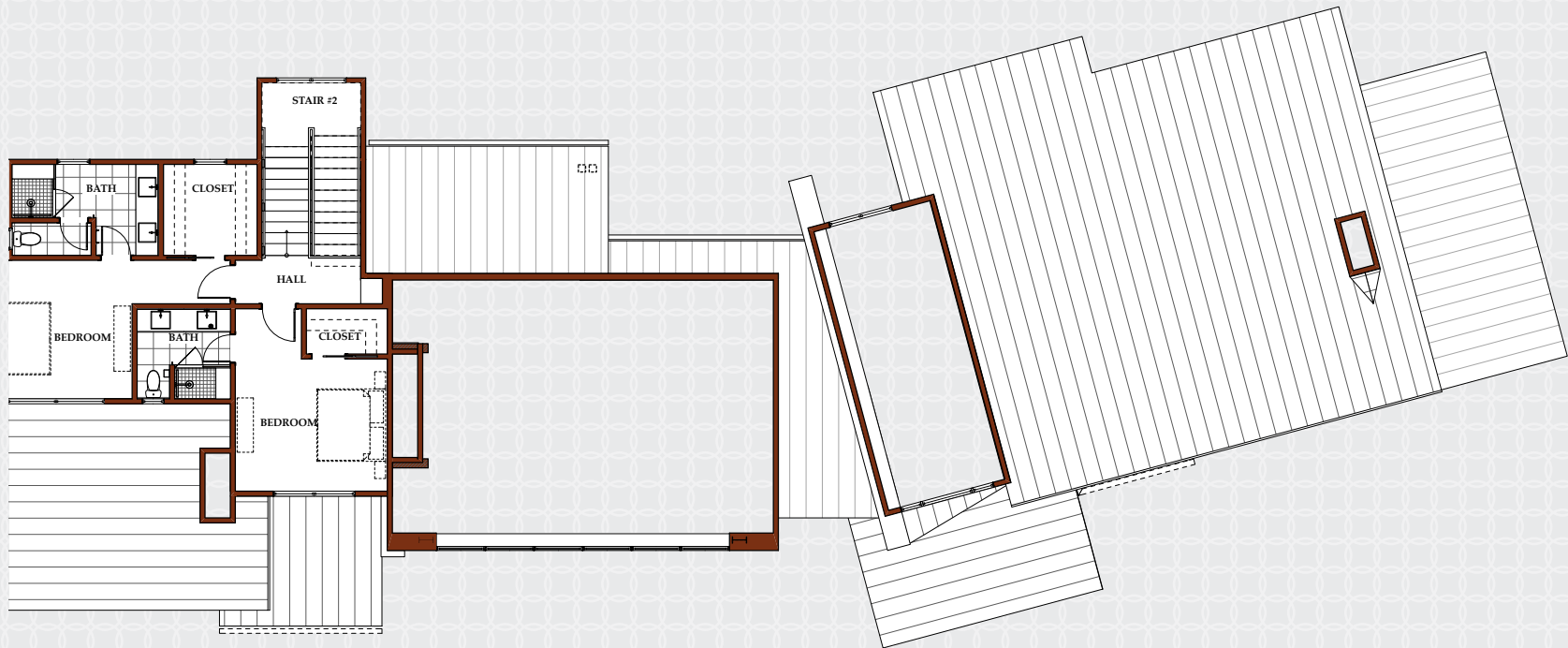


LOWER LEVEL

*Entry Foyer / Family Room / Rec Room / Wet Bar
Guest Suite #1 / Guest Suite #2 / Powder Room / Mud Room
Laundry / Storage / Elevator / 3-Car Garage / Patio*

- ALPINE GREENS 761 -

7,290 TOTAL HEATED LIVABLE SQUARE FOOTAGE

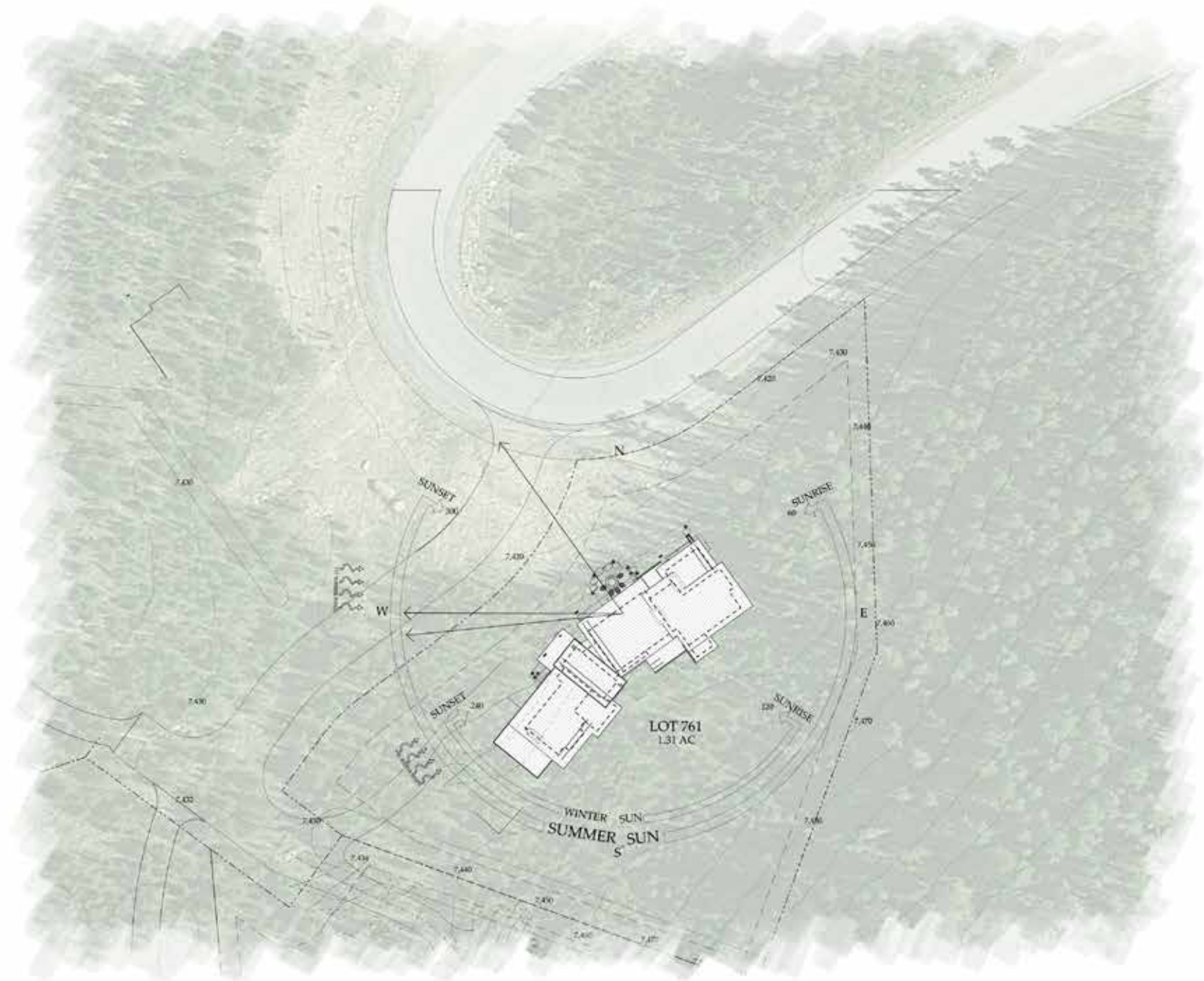


UPPER LEVEL

Guest Suite #3 / Guest Suite #4

- ALPINE GREENS 761 -

SITE PLAN





YELLOWSTONE CLUB

For more information about this property and its pricing please contact YC Realty.

(888) 700-7748 | (406) 995-4900 | ycesales@yellowstoneclub.com | P.O. Box 161097 | Big Sky, Montana 59716

www.yellowstoneclub.com

All information deemed reliable, but not guaranteed. All acreages and square footages are estimates. The purchase of a home or homesite does not include membership in Yellowstone Club, or any right to use the private club facilities. Ownership of a home/homesite includes an obligation to pay assessments to a property owner's association. Please ask a sales associate for details. Photographs are representational of the approximate view corridors from the home. Livable square footages listed in this marketing piece are based upon the calculation of only the heated and livable areas within the exterior walls of the property and said square footages are deemed reliable, but not guaranteed. All acreages and square footages are estimates and are provided by the Seller or his designated representative; these measurements should not be a substitute for one's own evaluation and investigation. Ski accessibility is a relative term and can have different implications and meanings depending on the individual. One should investigate fully the property as it relates to its potential ski access and determine for themselves the degree of ski access the property might have or be developed. Buyer acknowledges and agrees that neither the Seller, the Broker, the Sales Associate nor any other real estate representative of the Yellowstone Club or its related affiliates have made any warranties or representations upon which Buyer has relied concerning the ski-in ski-out accessibility of the property. The determination of the level of ski access that a property might have will be the Buyers sole determination. 7/19

