

YELLOWSTONE CLUB®

# ALPINE GREENS | 740



## - ALPINE GREENS 740 -

**T**he Alpine Greens neighborhood effortlessly blends the best of all worlds: walkable access to the famed Tom Weiskopf-designed golf course, easy access to pristine powder skiing—including the Eglise expansion, and a short drive from the bustling base area. All of this, with a side of exquisite mountain scenery.

Tucked behind the first hole of the golf course, Custom Residence 740 is new construction that showcases the finest in craftsmanship and mountain architecture. With its six bedrooms across two levels, this home has ample space for large gatherings and entertaining. Guests will love features like the multiple outdoor decks, view-framing floor-to-ceiling gabled windows, and modern design elements.

The main level of this residence is home to formal gathering spaces like the great room and dining room. With the adjacent kitchen, entertaining is a breeze—though the huge views out the large windows will always remain the guest of honor. The main level also features an expansive owner suite, including private deck, full bathroom, owner lock off closet, and adjacent office space.

The home's lower level offers four additional bedrooms, including a bunk room, each with its own private bathroom. This level is the perfect spot for games and movie nights—the media room, rec room, and wet bar are all designed for entertaining. The walk-out lower patio features a hot tub and fire pit, perfect for cool summer evening or apres-ski soaks.

The guest suite above the garage rounds out the offerings and includes its own private deck, bedroom and bathroom, and office space. This home is ready to become the perfect setting for family memories, timeless adventures, and opportunities to disconnect from a hectic world while reconnecting to the people and things that truly matter.

# - ALPINE GREENS 740 -

## FEATURES

6 bedrooms

6 bathrooms, 2 powder rooms

Walkable access to Golf Course Clubhouse

Two levels of living space, plus above-garage suite

Wet bar + wine nook

Multiple decks and fireplaces

Hot tub, fire pit

New Construction

This residence is located within Yellowstone Club, a 15,200 acre private, gated community located in Big Sky, Montana. Yellowstone Club is the world's only private ski and golf community, encompassing thousands of acres of private skiing along with a championship golf course designed by Tom Weiskopf. Additionally, whether looking to savor spectacular mountain panoramas, explore the vast wilderness or enjoy high-quality amenities, Yellowstone Club offers everything from fly fishing, hiking and biking trails to fine dining and spa services. Professional SnowSports, golf and outdoor recreation programs, along with dedicated children's activities, round out the unique Montana experience that is Yellowstone Club.

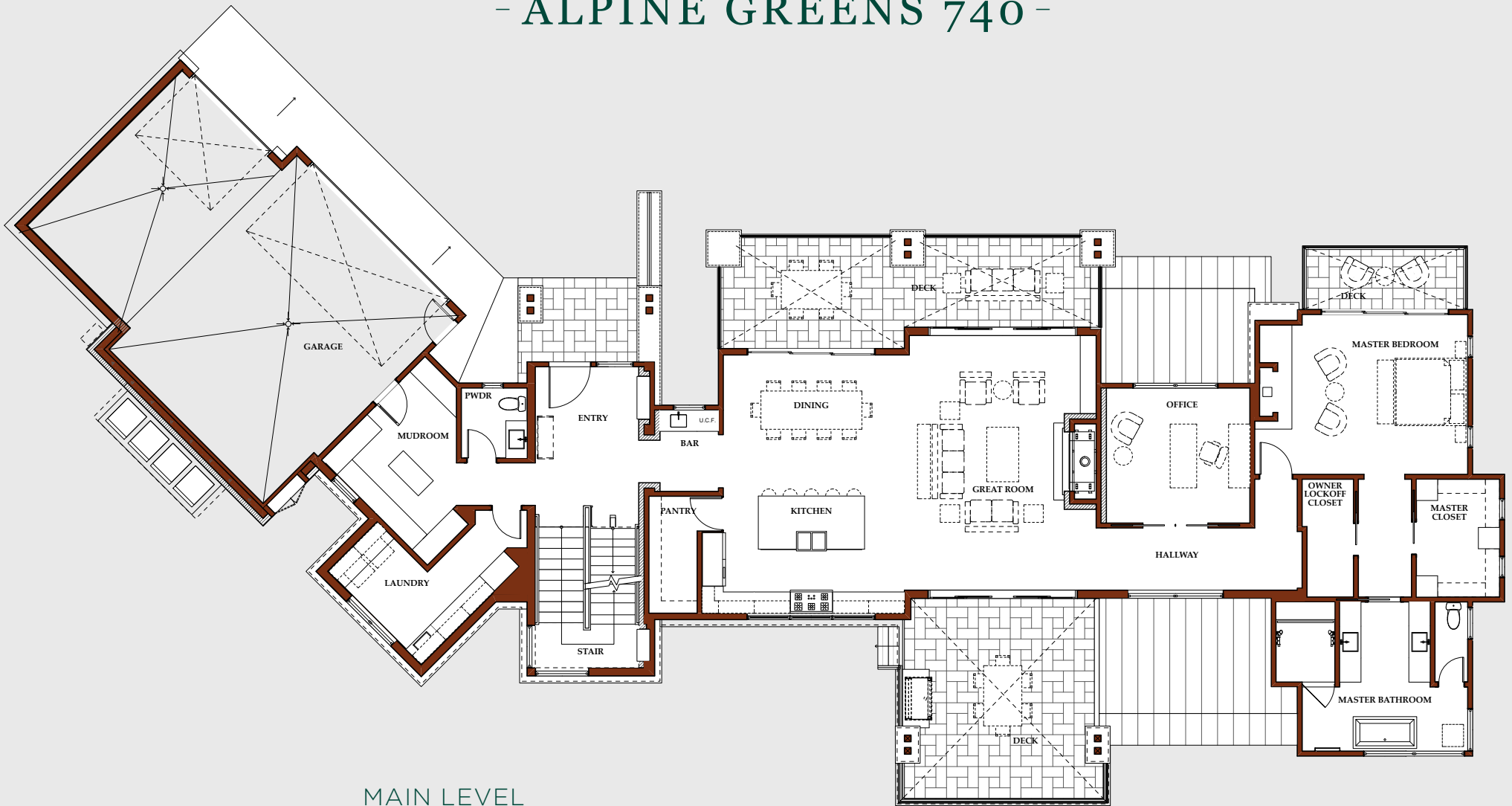


REAR EXTERIOR RENDERING

GREAT ROOM RENDERING



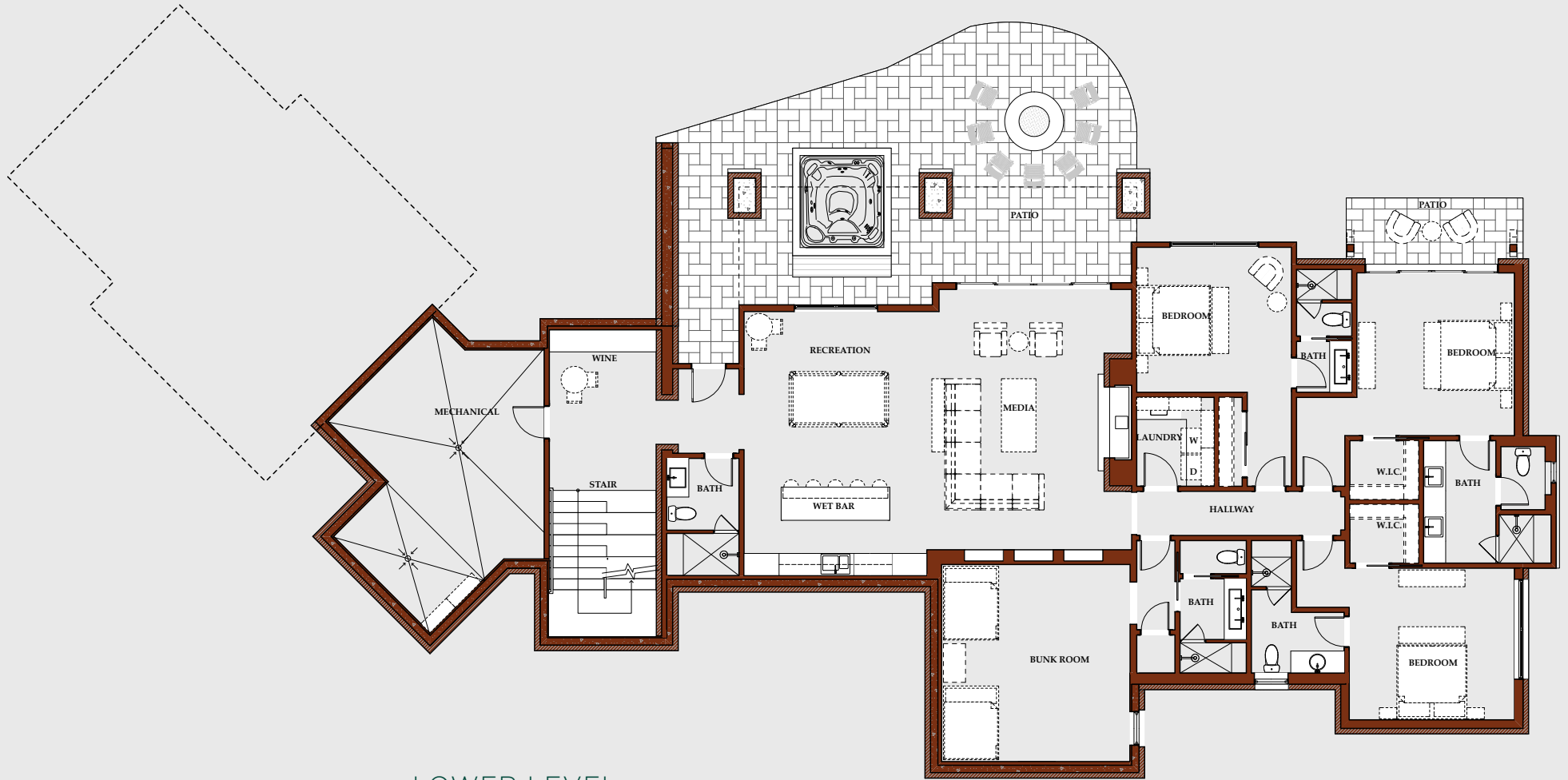
# - ALPINE GREENS 740 -



## MAIN LEVEL

*Entry Foyer / Kitchen / Dining / Great Room / Outdoor Living Areas  
Master Bedroom / Master Bathroom / Master Deck / Owner Lock off Closet  
Office / Powder Room / Laundry / Mudroom / 3-Car Garage*

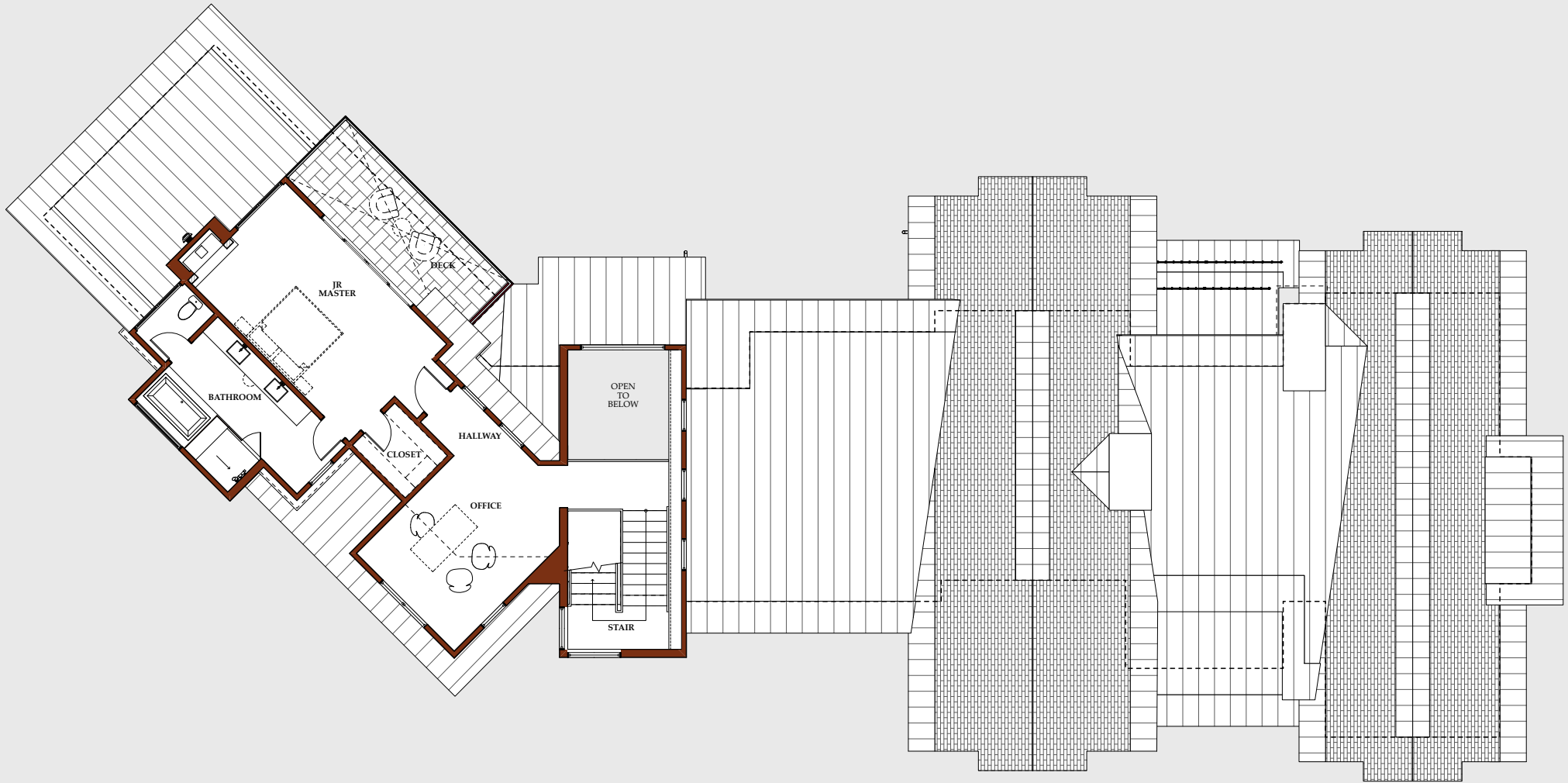
# - ALPINE GREENS 740 -



## LOWER LEVEL

*Media & Rec Room / Wet Bar / Wine Storage  
Guest Suite #1 / Guest Suite #2 / Guest Suite #3 / Bunk Room / Bunk Bathroom  
Laundry / Outdoor Hot Tub & Fire pit Patio*

# - ALPINE GREENS 740 -

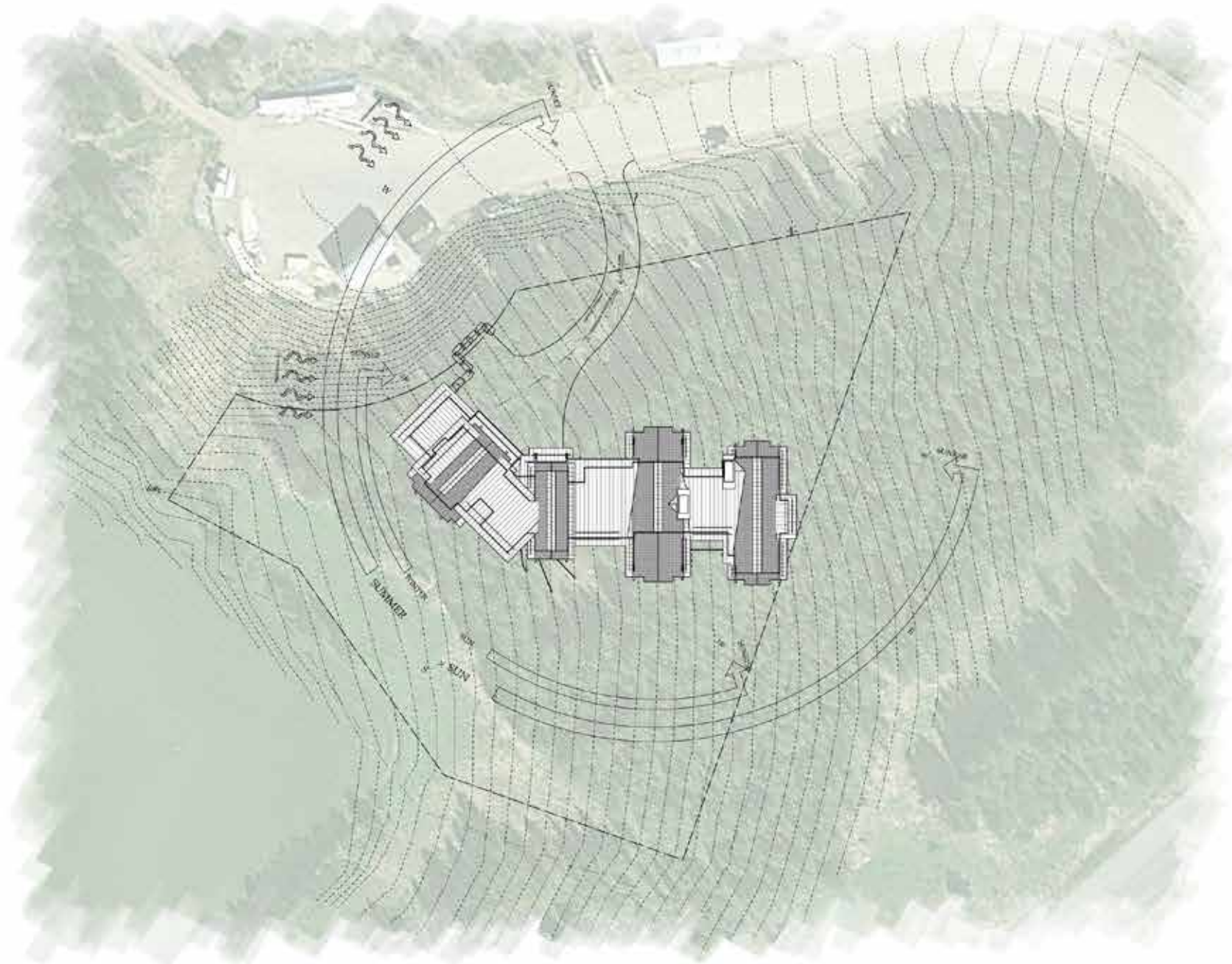


## UPPER LEVEL

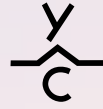
*Guest Suite #4 / Office / Deck / Open space to below*

# - ALPINE GREENS 740 -

SITE PLAN







**YELLOWSTONE CLUB®**

For more information about this property and its pricing please contact YC Realty.

(888) 700-7748 | (406) 995-4900 | [ycsales@yellowstoneclub.com](mailto:ycsales@yellowstoneclub.com) | P.O. Box 161097 | Big Sky, Montana 59716

[www.yellowstoneclub.com](http://www.yellowstoneclub.com)

All information deemed reliable, but not guaranteed. All acreages and square footages are estimates. The purchase of a home or homesite does not include membership in Yellowstone Club, or any right to use the private club facilities. Ownership of a home/homesite includes an obligation to pay assessments to a property owner's association. Please ask a sales associate for details. Photographs are representational of the approximate view corridors from the home. Livable square footages listed in this marketing piece are based upon the calculation of only the heated and livable areas within the exterior walls of the property and said square footages are deemed reliable, but not guaranteed. All acreages and square footages are estimates and are provided by the Seller or his designated representative; these measurements should not be a substitute for one's own evaluation and investigation. Ski accessibility is a relative term and can have different implications and meanings depending on the individual. One should investigate fully the property as it relates to its potential ski access and determine for themselves the degree of ski access the property might have or be developed. Buyer acknowledges and agrees that neither the Seller, the Broker, the Sales Associate nor any other real estate representative of the Yellowstone Club or its related affiliates have made any warranties or representations upon which Buyer has relied concerning the ski-in ski-out accessibility of the property. The determination of the level of ski access that a property might have will be the Buyers sole determination.

11/20