

VILLAGE CORE
WATERFALL BUILDING

| 4-304



YELLOWSTONE CLUB

- VILLAGE CORE 4-304

2,151 TOTAL HEATED LIVABLE SQUARE FOOTAGE

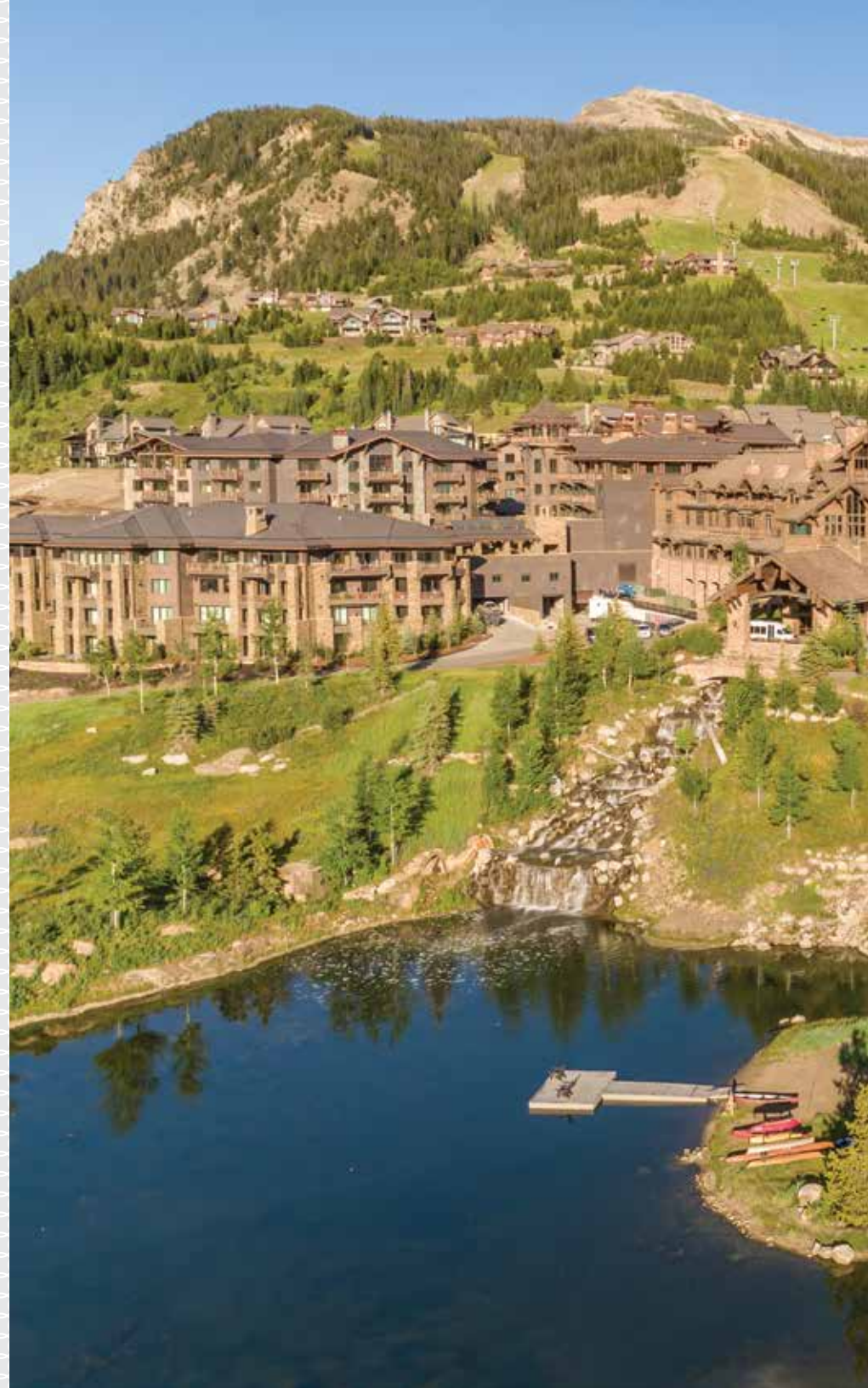
The Village at the Yellowstone Club is a lively hub of activity, with nightlife, retail, recreational opportunities, youth programming, and amazing condo living. The Village Core condos highlight exactly what it means to live at the Core: a walkable lifestyle filled with incredible conveniences and desirable one-level living

Condo 4-304 is located in the Waterfall building of the Village Core, adjacent to the Warren Miller Lodge and a plethora of amenities. The third-floor location of this condo captures southern views that fill the tall ceilings with natural light and illuminate the crisp, modern design. This condo features an open floor plan, with all spaces centered around the bright and airy kitchen and living room.

Just past the living room, expansive glass doors open to the outdoor deck, with cozy seating perfectly poised to soak in views of the Gallatin Range. The kitchen includes stone slab countertops, warm neutral custom cabinetry, and top-of-the-line appliances: though many restaurants are nearby, the home chef will find nothing lacking here.

Two bedrooms surround these main gathering spaces: one bunk room and the master suite. Each bedroom has abundant closet space and a neutral design palate accented with pops of color. The master suite has bonus features like the gas fireplace and private deck.

Owners will enjoy short strolls to the Village amenities, including the state-of-the-art Spa and Fitness, plus perks like allocated parking and locker spaces, which makes accessing the famed Yellowstone Club ski terrain on Pioneer and Eglise Mountains simply effortless.



MAIN LIVING AREA





- VILLAGE CORE 4-304 -

2,151 TOTAL HEATED LIVABLE SQUARE FOOTAGE

FEATURES

2,151 heated, livable square feet

2 bedrooms

3 bathrooms

Elevator access to third floor location

Access to Village Core and amenities

Southern views of Gallatin Range

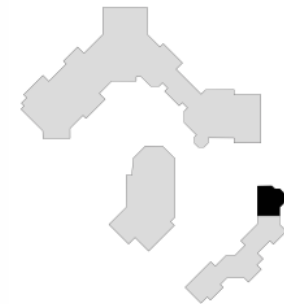
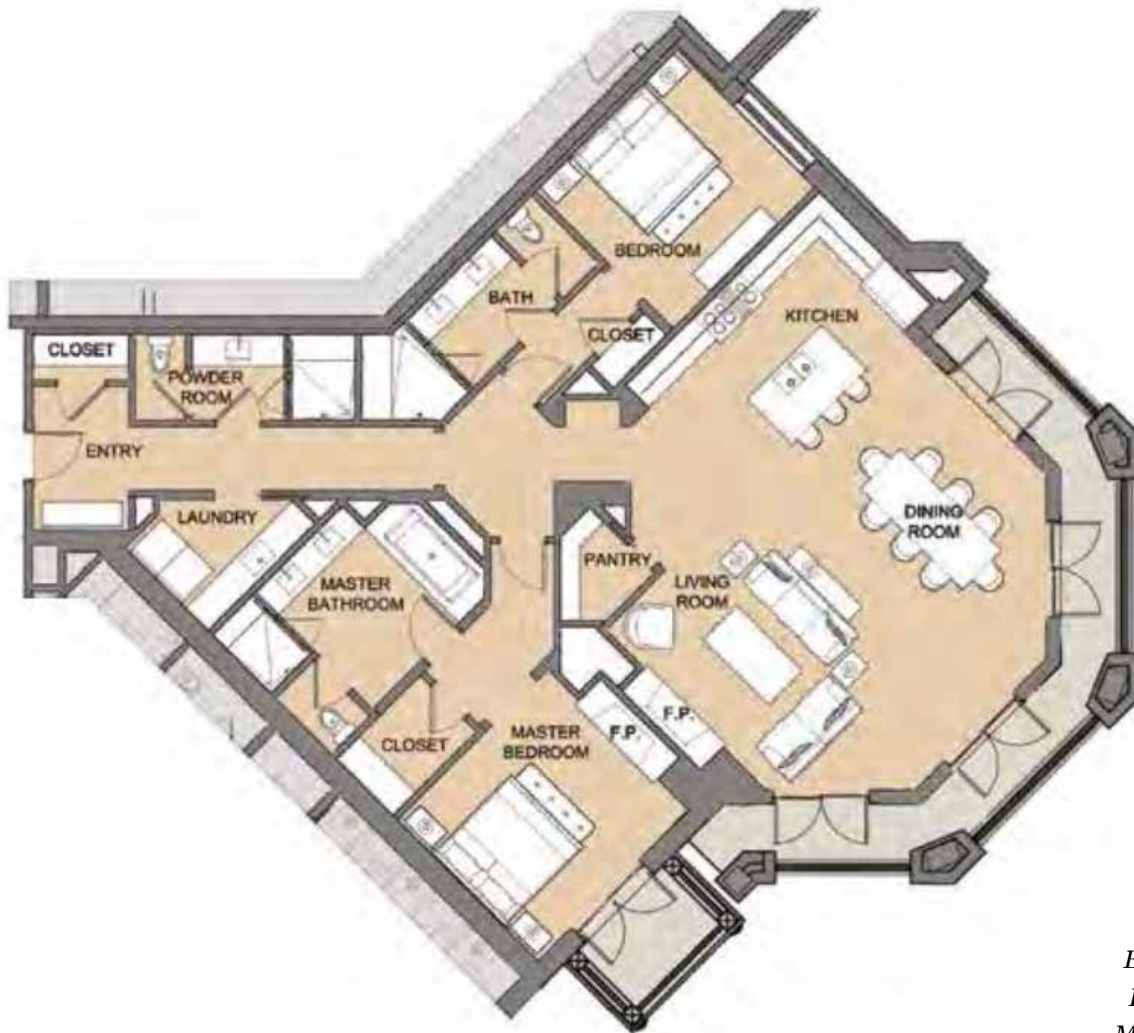
Gas fireplaces in living room, master suite

Designated parking and locker space

This residence is located within Yellowstone Club, a 15,200 acre private, gated community located in Big Sky, Montana. Yellowstone Club is the world's only private ski and golf community, encompassing thousands of acres of private skiing along with a championship golf course designed by Tom Weiskopf. Additionally, whether looking to savor spectacular mountain panoramas, explore the vast wilderness or enjoy high-quality amenities, Yellowstone Club offers everything from fly fishing, hiking and biking trails to fine dining and spa services. Professional SnowSports, golf and outdoor recreation programs, along with dedicated children's activities, round out the unique Montana experience that is Yellowstone Club.

- VILLAGE CORE 4-304 -

2,151 TOTAL HEATED LIVABLE SQUARE FOOTAGE



ONE LEVEL

*Entry Foyer / Powder / Laundry / Closet
Kitchen / Dining / Living Room / Pantry
Master Suite / Outdoor Patio / Bunk Room*

OPEN FLOOR PLAN





KITCHEN



DINING





MASTER SUITE





BUNK ROOM



BUNK ROOM



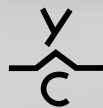
BUNK BATHROOM



LAUNDRY



BATHROOM #3



YELLOWSTONE CLUB®

For more information about this property and its pricing please contact YC Realty.

(888) 700-7748 | (406) 995-4900 | yccsales@yellowstoneclub.com | P.O. Box 161097 | Big Sky, Montana 59716

www.yellowstoneclub.com

All information deemed reliable, but not guaranteed. All acreages and square footages are estimates. The purchase of a home or homesite does not include membership in Yellowstone Club, or any right to use the private club facilities. Ownership of a home/homesite includes an obligation to pay assessments to a property owner's association. Please ask a sales associate for details. Photographs are representational of the approximate view corridors from the home. Livable square footages listed in this marketing piece are based upon the calculation of only the heated and livable areas within the exterior walls of the property and said square footages are deemed reliable, but not guaranteed. All acreages and square footages are estimates and are provided by the Seller or his designated representative; these measurements should not be a substitute for one's own evaluation and investigation. Ski accessibility is a relative term and can have different implications and meanings depending on the individual. One should investigate fully the property as it relates to its potential ski access and determine for themselves the degree of ski access the property might have or be developed. Buyer acknowledges and agrees that neither the Seller, the Broker, the Sales Associate nor any other real estate representative of the Yellowstone Club or its related affiliates have made any warranties or representations upon which Buyer has relied concerning the ski-in ski-out accessibility of the property. The determination of the level of ski access that a property might have will be the Buyers sole determination.