

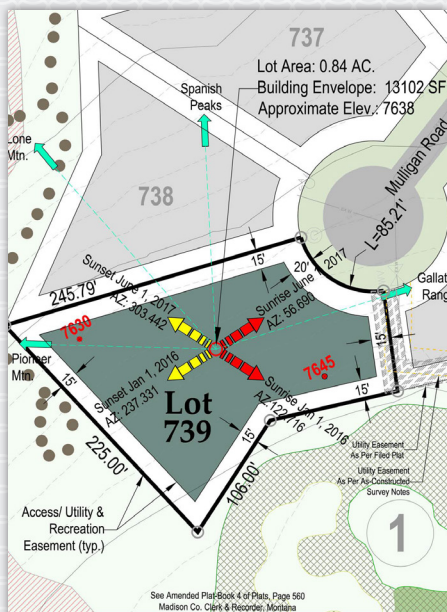
ALPINE GREENS 739



YELLOWSTONE CLUB

ALPINE GREENS 739

Located in the heart of the Alpine Greens neighborhood at Yellowstone Club, homesite 739 provides a beautiful foundation for a custom residence with expansive views, privacy, and golf course access. The Alpine Greens neighborhood effortlessly blends the best of all worlds: walkable access to the famed Tom Weiskopf-designed golf course, easy access to pristine powder skiing, and a short drive from the bustling base area. All of this, with a side of exquisite mountain scenery. This homesite is just off Hole 1 on a quiet cul-de-sac, ensuring privacy, and ready to become the perfect setting for family memories, timeless adventures, and opportunities to disconnect from a hectic world while reconnecting to the people and things that truly matter.



FEATURES

1.36 Acres

Views of Pioneer Ridge, Lone Peak, and Spanish Peaks Range

For more information about this property and its pricing please contact YC Realty.

(888) 700-7748 | (406) 995-4900 | yccsales@yellowstoneclub.com | P.O. Box 161097 | Big Sky, Montana 59716

www.yellowstoneclub.com

All information deemed reliable, but not guaranteed. All acreages and square footages are estimates. The purchase of a home or homesite does not include membership in Yellowstone Club, or any right to use the private club facilities. Ownership of a home/homesite includes an obligation to pay assessments to a property owner's association. Please ask a sales associate for details. Photographs are representational of the approximate view corridors from the home. Livable square footages listed in this marketing piece are based upon the calculation of only the heated and livable areas within the exterior walls of the property and said square footages are deemed reliable, but not guaranteed. All acreages and square footages are estimates and are provided by the Seller or his designated representative; these measurements should not be a substitute for one's own evaluation and investigation. Ski accessibility is a relative term and can have different implications and meanings depending on the individual. One should investigate fully the property as it relates to its potential ski access and determine for themselves the degree of ski access the property might have or be developed. Buyer acknowledges and agrees that neither the Seller, the Broker, the Sales Associate nor any other real estate representative of the Yellowstone Club or its related affiliates have made any warranties or representations upon which Buyer has relied concerning the ski-in ski-out accessibility of the property. The determination of the level of ski access that a property might have will be the Buyers sole determination.