

# VILLAGE CORE

WATERFALL BUILDING

# | 4-201



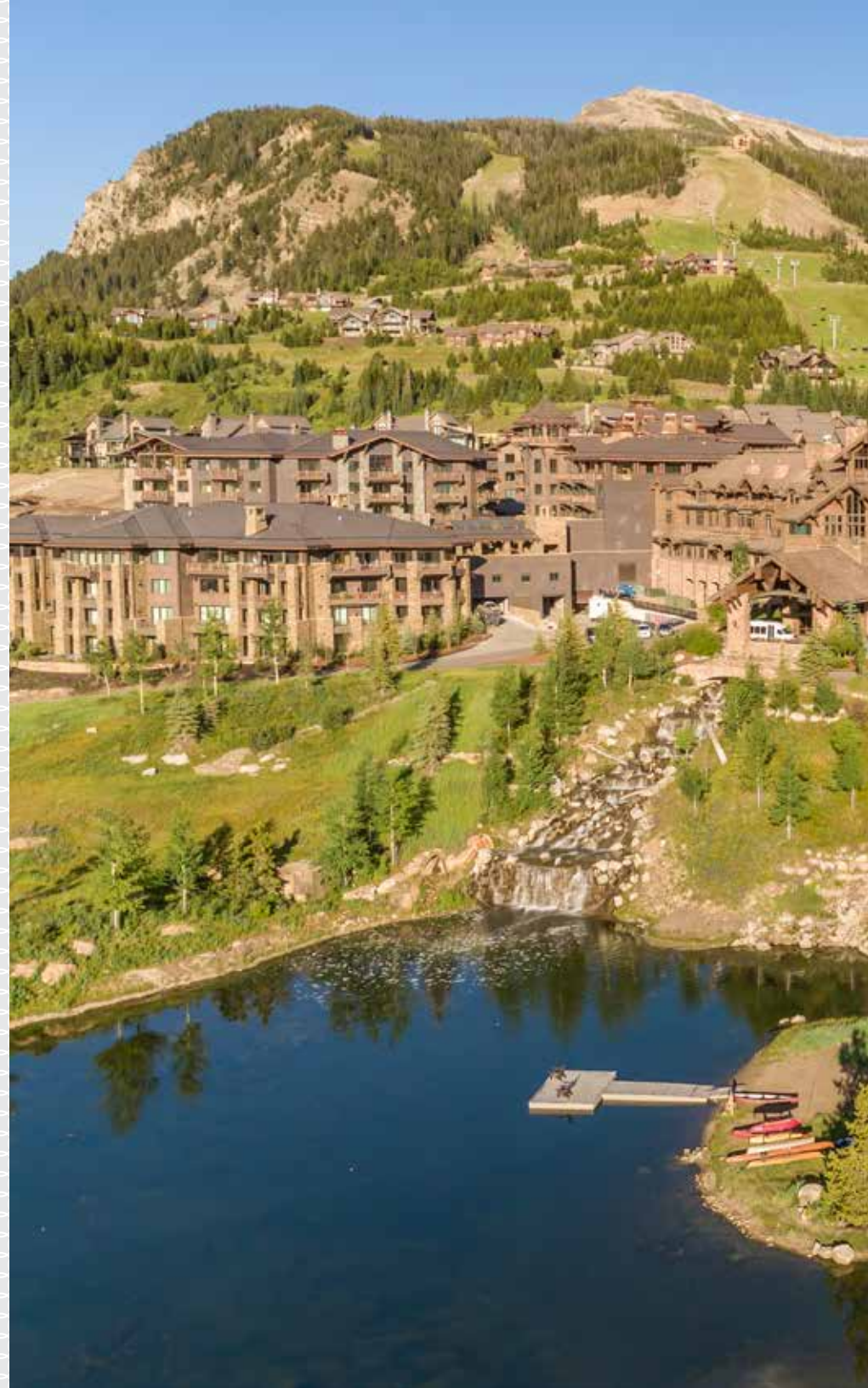
YELLOWSTONE CLUB

## – VILLAGE CORE 4-201 –

2,306 TOTAL HEATED LIVABLE SQUARE FOOTAGE

A tastefully designed condo set at the bustling Village Core of the Yellowstone Club, Village Core Condo 4-201 features a modern alpine retreat with immediate access to world-class amenities. Base area living boasts an energetic lifestyle, elevated by luxury experiences and exhilarating alpine adventure. Making the day-to-day a seamless endeavor, the Condominium Association provides personalized services for Members, maximizing precious time spent in the company of loved ones. With ski-in ski-out access to thousands of acres of pristine ski trails and a short drive to the famed Tom Weiskopf designed golf course, Members can immerse themselves into a life well lived. Encouraging time spent enjoying the outdoors, the condo features three balconies, idyllic for watching the sun rise over the rugged landscape.

Rustic, yet refined, Village Core 4-201 features a bright and airy open-concept living space where organic textures effortlessly blend with contemporary design. In the living room, a stone gas burning fireplace casts an amber glow, warming the lounge on snowy winter nights. Making hosting dinner parties a breeze, state-of-the-art appliances and a custom pantry in the kitchen provide ease in the culinary expression. Accents of white marble reflect natural light, imbuing a clean, tranquil atmosphere as a long central island with countertop seating offers an elegant perch for guests. A dining table offers a formal setting to gather to enjoy memorable meals with friends and family. A southeast facing terrace features a breathtaking setting to take in sunrises and the twinkling night sky. A powder bathroom and laundry room provide convenience throughout the busy getaway, ensuring organization and tidiness.



## VILLAGE CORE EXTERIOR



The warmth from a fireplace fills the primary suite, where a calm sanctuary offers a peaceful space to rest after a long day of alpine adventure. Soothing sore muscles, a soaking tub in the ensuite bathroom restores spirit and body. A large walk-in closet provides ample space to store belongings, keeping a tidy appearance in the room. A private balcony features a quiet space to take in rugged panoramas of the surrounding mountainscape. The guest bedroom also features private terrace access, where guests can enjoy scenic vistas and fresh alpine air. Offering the comforts of home, an ensuite bathroom and closet storage accommodate guests throughout their stay.

Centrally located within walking distance to high-end amenities and ski lifts, Members can maximize their time enjoying the natural wonders that Montana has to offer. Days filled with alpine adventure offers incredible potential to connect with an energetic community and make lasting friendships. An idyllic basecamp for hosting friends and family, memories made at this ski-in ski-out residence will endure for generations.

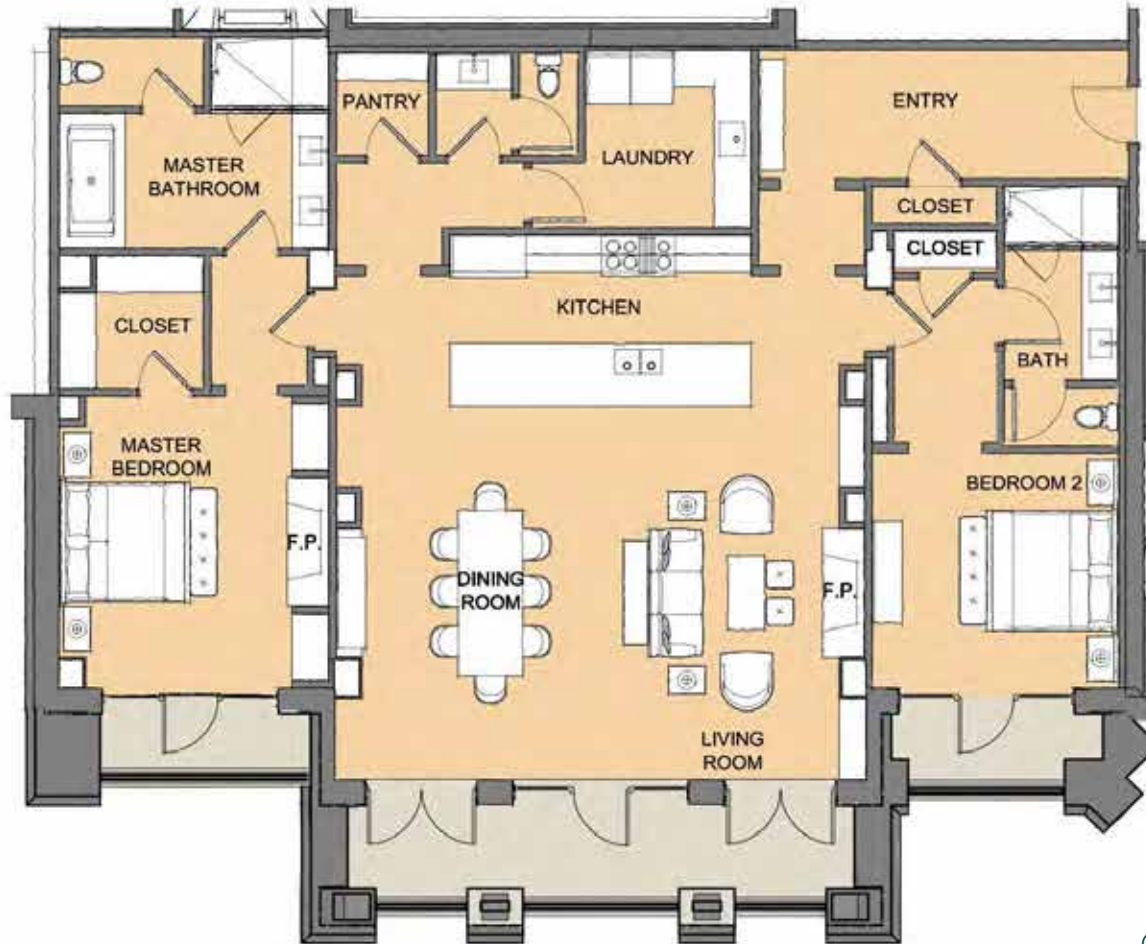
This residence is located within Yellowstone Club, a 15,200 acre private, gated community located in Big Sky, Montana. Yellowstone Club is the world's only private ski and golf community, encompassing thousands of acres of private skiing along with a championship golf course designed by Tom Weiskopf. Additionally, whether looking to savor spectacular mountain panoramas, explore the vast wilderness or enjoy high-quality amenities, Yellowstone Club offers everything from fly fishing, hiking and biking trails to fine dining and spa services. Professional SnowSports, golf and outdoor recreation programs, along with dedicated children's activities, round out the unique Montana experience that is Yellowstone Club.

### FEATURES

- 2,306 heated, livable square feet
- 2 bedrooms
- 2 bathrooms + 1 powder room
- Access to Village Core and amenities
- Southern views of Gallatin Range
- Designated parking and locker space
- Elevator access to fourth floor location

# - VILLAGE CORE 4-201 -

2,306 TOTAL HEATED LIVABLE SQUARE FOOTAGE



## ONE LEVEL

*Entry Foyer / Kitchen / Dining / Living Room  
Master Suite / Guest Bedroom Suite  
Powder Room / Laundry / Outdoor Living Space*



FOYER



OPEN FLOOR PLAN



KITCHEN





LIVING ROOM





MASTER SUITE



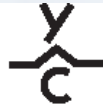
GUEST SUITE



LAUNDRY



POWDER ROOM



**YELLOWSTONE CLUB**

For more information about this property and its pricing please contact YC Realty.  
(888) 700-7748 | (406) 995-4900 | [yccsales@yellowstoneclub.com](mailto:yccsales@yellowstoneclub.com) | P.O. Box 161097 | Big Sky, Montana 59716  
[www.yellowstoneclub.com](http://www.yellowstoneclub.com)

All information deemed reliable, but not guaranteed. All acreages and square footages are estimates. The purchase of a home or homesite does not include membership in Yellowstone Club, or any right to use the private club facilities. Ownership of a home/homesite includes an obligation to pay assessments to a property owner's association. Please ask a sales associate for details. Photographs are representational of the approximate view corridors from the home. Livable square footages listed in this marketing piece are based upon the calculation of only the heated and livable areas within the exterior walls of the property and said square footages are deemed reliable, but not guaranteed. All acreages and square footages are estimates and are provided by the Seller or his designated representative; these measurements should not be a substitute for one's own evaluation and investigation. Ski accessibility is a relative term and can have different implications and meanings depending on the individual. One should investigate fully the property as it relates to its potential ski access and determine for themselves the degree of ski access the property might have or be developed. Buyer acknowledges and agrees that neither the Seller, the Broker, the Sales Associate nor any other real estate representative of the Yellowstone Club or its related affiliates have made any warranties or representations upon which Buyer has relied concerning the ski-in ski-out accessibility of the property. The determination of the level of ski access that a property might have will be the Buyers sole determination. 12/24

