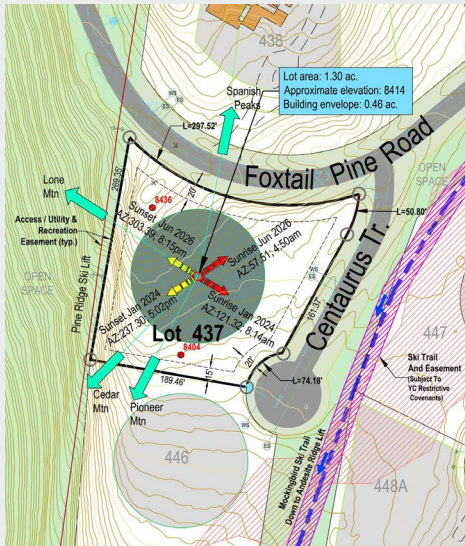


Big Sky Ridge 437



Big Sky Ridge 437

Welcome to Big Sky Ridge. From this lofty neighborhood, the pursuit of powder is a dream, given that this unique location in the Club allows for access to nearby summer and winter activities. Enjoy majestic views of Pioneer and Cedar Mountains, Lone Peak, and the Spanish Peaks from this 1.30 acre homesite in Yellowstone Club's Big Sky Ridge neighborhood. A skier's paradise, this lot has prime access to Yellowstone Club's private ski trails coupled with grand views provide the perfect backdrop for a future custom residence in this magnificent alpine setting.

Features

- ◆ Approximate building envelope elevation at 8,414'
- ◆ 1.30 acre homesite
- ◆ Beautiful views of Pioneer, Cedar, and Lone Peak
- ◆ Mature trees throughout lot
- ◆ Adjacent to Pine Ridge Ski Lift
- ◆ Gentle Slope



For more information about this property and its pricing please contact YC Realty.

(888) 700-7748 ◆ (406) 995-4900
 ycsales@yellowstoneclub.com
 P.O. Box 161097 ◆ Big Sky, Montana 59716
 www.yellowstoneclub.com

All information deemed reliable, but not guaranteed. All acreages and square footages are estimates. The purchase of a home or homesite does not include membership in Yellowstone Club, or any right to use the private club facilities. Ownership of a home/homesite includes an obligation to pay assessments to a property owner's association. Please ask a sales associate for details. Photographs are representational of the approximate view corridors from the home. Livable square footages listed in this marketing piece are based upon the calculation of only the heated and livable areas within the exterior walls of the property and said square footages are deemed reliable, but not guaranteed. All acreages and square footages are estimates and are provided by the Seller or his designated representative; these measurements should not be a substitute for one's own evaluation and investigation. Ski accessibility is a relative term and can have different implications and meanings depending on the individual. One should investigate fully the property as it relates to its potential ski access and determine for themselves the degree of ski access the property might have or be developed. Buyer acknowledges and agrees that neither the Seller, the Broker, the Sales Associate nor any other real estate representative of the Yellowstone Club or its related affiliates have made any warranties or representations upon which Buyer has relied concerning the ski-in ski-out accessibility of the property. The determination of the level of ski access that a property might have will be the Buyers sole determination.