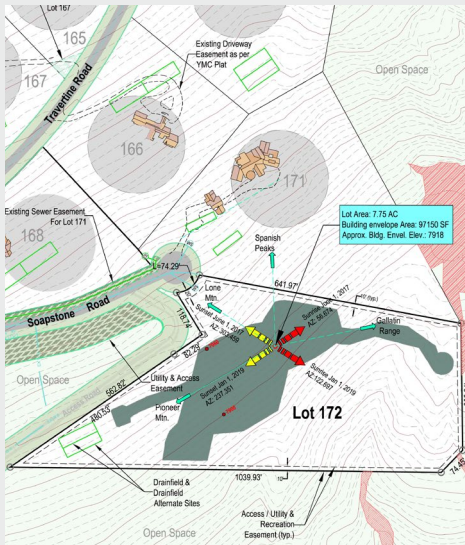




Andesite Ridge 172



Andesite Ridge 172

Due to its private setting, Homesite 172 is the perfect location for a Montana getaway. This lot features stunning panoramic views to the south and east that include Eglise Mountain, YC's Tom Weiskopf designed championship golf course, and Pioneer Mountain, at the same time, it enjoys a sense of natural solitude thanks to dense stands of fragrant Lodgepole pines. This large 7.75 acre lot also boasts wonderfully warm winter southern exposure and a meadow frequented by native wildlife, including mule deer and elk. Homesite 172 possesses all of the attributes needed for the quintessential mountain retreat.

Features

- ◆ Secluded, end-of-the-road location with wildlife viewing in the lot's meadow
- ◆ 7.75 acre homesite
- ◆ Approximate building envelope elevation at 7,975'
- ◆ Beautiful views of Eglise Mountain, YC's Tom Weiskopf-designed championship golf course and Pioneer Mountain
- ◆ Mature trees throughout lot



YELLOWSTONE CLUB®

For more information about this property and its pricing please contact YC Realty.

(888) 700-7748 ◆ (406) 995-4900
 ycsales@yellowstoneclub.com
 P.O. Box 161097 ◆ Big Sky, Montana 59716
 www.yellowstoneclub.com

All information deemed reliable, but not guaranteed. All acreages and square footages are estimates. The purchase of a home or homesite does not include membership in Yellowstone Club, or any right to use the private club facilities. Ownership of a home/homesite includes an obligation to pay assessments to a property owner's association. Please ask a sales associate for details. Photographs are representational of the approximate view corridors from the home. Livable square footages listed in this marketing piece are based upon the calculation of only the heated and livable areas within the exterior walls of the property and said square footages are deemed reliable, but not guaranteed. All acreages and square footages are estimates and are provided by the Seller or his designated representative; these measurements should not be a substitute for one's own evaluation and investigation. Ski accessibility is a relative term and can have different implications and meanings depending on the individual. One should investigate fully the property as it relates to its potential ski access and determine for themselves the degree of ski access the property might have or be developed. Buyer acknowledges and agrees that neither the Seller, the Broker, the Sales Associate nor any other real estate representative of the Yellowstone Club or its related affiliates have made any warranties or representations upon which Buyer has relied concerning the ski-in ski-out accessibility of the property. The determination of the level of ski access that a property might have will be the Buyers sole determination.