

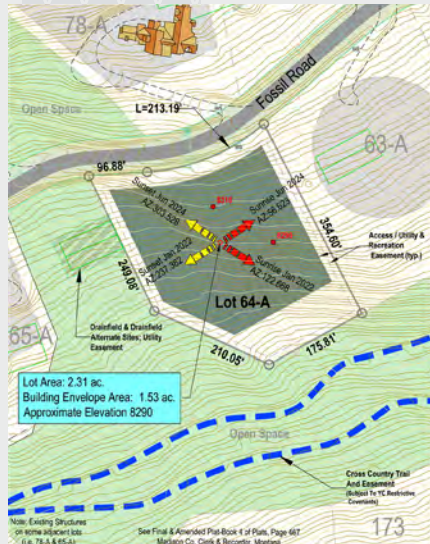


Andesite Ridge 64A



Andesite Ridge 64A

From its perch at nearly 8,400 feet, the custom residence Andesite Ridge 64-A is the quintessential setting for catching the subtleties of the mountains. From the first dusting of a late autumn snowfall, to the drooping boughs of a winter storm, to the bright green pops of early spring, this homesite is designed to capture the beauty in the everyday. The Andesite Ridge neighborhood is loved for its nod to the simple grace that comes with mountain living: views of mountaintops, mature lodgepole pines, and is only a short drive to the famed base area, home to many of the YC's much-loved amenities, including fine dining, concierge services, gear rental, shopping, and adult and youth recreation.



YELLOWSTONE CLUB®

Features

- ◆ 2.31-acre lot
- ◆ Views of Pioneer Mountain, Eglise, and our Tom Weiskopf designed 18-hole golf course
- ◆ Bordered by open space
- ◆ Adjacent to cross country trail and easement

For more information about this property and its pricing please contact YC Realty.

(888) 700-7748 ◆ (406) 995-4900
 ycsales@yellowstoneclub.com
 P.O. Box 161097 ◆ Big Sky, Montana 59716
www.yellowstoneclub.com

All information deemed reliable, but not guaranteed. All acreages and square footages are estimates. The purchase of a home or homesite does not include membership in Yellowstone Club, or any right to use the private club facilities. Ownership of a home/homesite includes an obligation to pay assessments to a property owner's association. Please ask a sales associate for details. Photographs are representational of the approximate view corridors from the home. Livable square footages listed in this marketing piece are based upon the calculation of only the heated and livable areas within the exterior walls of the property and said square footages are deemed reliable, but not guaranteed. All acreages and square footages are estimates and are provided by the Seller or his designated representative; these measurements should not be a substitute for one's own evaluation and investigation. Ski accessibility is a relative term and can have different implications and meanings depending on the individual. One should investigate fully the property as it relates to its potential ski access and determine for themselves the degree of ski access the property might have or be developed. Buyer acknowledges and agrees that neither the Seller, the Broker, the Sales Associate nor any other real estate representative of the Yellowstone Club or its related affiliates have made any warranties or representations upon which Buyer has relied concerning the ski-in ski-out accessibility of the property. The determination of the level of ski access that a property might have will be the Buyers sole determination.