

CONDOMINIUM TYPE B FLOOR PLAN GENERAL NOTES

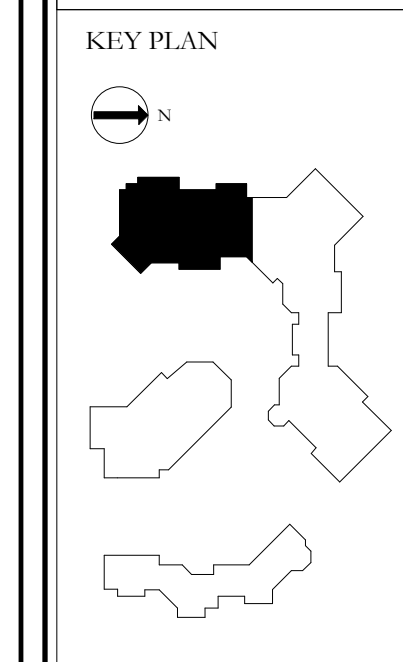
- THIS CONDOMINIUM UNIT IS INTENDED TO BE A TYPE B DWELLING UNIT PER BC 2012 SECTION 1107.9 AND ICC A117.1-2009 CHAPTER 10 INCLUDING AN OPTION B BATHROOM PER SECTION 1004.11.3.2 AS INDICATED ON THE PLAN.
- THIS CONDOMINIUM UNIT IS INTENDED TO COMPLY WITH FHA ACCESSIBLE BATHROOM MANUAL 1998 REQUIREMENTS INCLUDING A "SPECIFICATION" B BATHROOM AS INDICATED ON THE PLAN.
- ELECTRICAL DEVICES SUCH AS SWITCHES, OUTLETS AND CONTROLS SHALL COMPLY WITH IBC 2012 SECTION 1107.6, ICC A117.1-2009 CHAPTER 10 AND FHA ACCESSIBLE DESIGN MANUAL 1998 CHAPTER 5.
- PROVIDE REINFORCEMENT AROUND TOILETS, TUBS AND SHOWERS IN ALL BATHROOMS CONTAINED IN THIS CONDOMINIUM UNIT PER BC 2012 SECTION 1107.6, ICC A117.1-2009 CHAPTER 10 AND FHA ACCESSIBLE DESIGN MANUAL 1998 CHAPTER 6.
- REFER TO SHT. A0.4.2 FOR TYPICAL REQUIRED REINFORCEMENT LOCATIONS U.O.N.
- SEE INTERIOR DESIGN DRAWINGS FOR ALL REQUIRED BACKING SUPPORT FOR F.F.A.E. ITEMS, AND NOTES.
- REFER TO SHT. A0.6.1 & A0.6.4 FOR CONDOMINIUM UNIT DOOR TYPES, SCHEDULES, DETAILS AND NOTES.
- ALL DOORS NEXT TO A PARTITION SHALL BE LOCATED 5' FROM PARTITION TYP. U.O.N.
- ALL DOORS APPEARING TO BE CENTERED ON A WALL SHALL BE CENTERED TYP. U.O.N.
- SEE 1/8" SCALE AREA PLANS FOR ALL EXTERIOR DOORS & WINDOWS.
- DIMENSIONS ARE FROM FACE OF GYP. BD. TO FACE OF GYP. BD. TYP. U.O.N.
- PROVIDE 1" CLR. AIR SPACE BETWEEN ALL FURRED PARTITIONS AND CORE WALLS AROUND STAIRS AND ELEVATORS. PROVIDE A 1" CLR. AIR SPACE BETWEEN ALL OTHER FURRED PARTITIONS AND CONCRETE WALLS TYP. U.O.N.
- PROVIDE ACOUSTICAL UNDERLAYMENT AT ALL HARD FLOORING TYP. SEE SPECIFICATIONS SECTION 06 16 20.
- ALL BATH TUBS TO BE MANUFACTURED BY ZUMA COLLECTION. SEE SPECIFICATIONS.
- SEE MASTER BATH FLOOR PLAN 1/A5.018 FOR ALL TYP. BATHROOM DETAILS.
- SEE SCHEDULES FOR ALL RESIDENTIAL APPLIANCES & FP SPECIFICATIONS.
- PROVIDE OVERFLOW FLOOR DRAIN OR LEAK DETECTION DEVICE @ ALL WASHERS TYP.
- PROVIDE UNDER CABINET FIRE EXTINGUISHER IN CODE COMPLIANT LOCATION AS APPROVED BY AHJ.

KEYNOTES

KEYNOTE	DESCRIPTION
C01	STEAM UNIT LOCATION, S.E.D., S.P.D., TYP.
C02	ELECTRICAL SUBPANEL LOCATION, S.E.D.
C03	AUDIO-VISUAL SYSTEM RACK, TYP.
C04	30" X 48" CLEAR FLOOR SPACE, TYP.
C05	FIREPLACE FLUE TERMINATION, S.M.D., SEE EXT. ELEVS
C06	KITCHEN HOOD EXHAUST TERMINATION, S.M.D., SEE EXT. ELEVS
C07	DRYER EXHAUST TERMINATION, S.M.D., SEE EXT. ELEVS
C08	PORTABLE HOT TUB-SPA 7 PERSON "GRANDEE" PER SPEC., S.P.D., S.E.D.
C09	RAISED STONE SLAB HEARTH S.I.D., TYP.
C10	RANGE R-01 & HOOD H-01, SEE SPEC. S.E.D., S.P.D.
C11	RANGE R-02 & HOOD H-02, SEE SPEC. S.E.D., S.P.D.
C12	RANGE R-03 & HOOD H-03, SEE SPEC. S.E.D., S.P.D.
C13	REFRIGERATOR RF-01 & FREEZER RF-02, SEE SPEC. S.E.D., S.P.D.
C14	REFRIGERATOR RF-03 & FREEZER RF-04, SEE SPEC. S.E.D., S.P.D.
C15	REFRIGERATOR RF-05 & FREEZER RF-06, SEE SPEC. S.E.D., S.P.D.
C16	UNDERCOUNTER WINE STORAGE RF-07, SEE SPEC. S.E.D., S.P.D.
C17	UNDERCOUNTER BEVERAGE CENTER RF-08, SEE SPEC. S.E.D., S.P.D.
C17.1	REFRIGERATOR DRAWERS RF-10, SEE SPEC. S.E.D., S.P.D.
C18	UNDERCOUNTER ICE MAKER RF-09, SEE SPEC. S.E.D., S.P.D.
C19	DISHWASHER DW-01, SEE SPEC. S.E.D., S.P.D.
C20	WASHER WD-01, SEE SPEC. S.E.D., S.P.D.
C21	DRYER WD-02, SEE SPEC. S.E.D., S.P.D.
C22	FIREPLACE FP-10, SEE SPEC. S.E.D., S.P.D.
C23	FIREPLACE FP-11, SEE SPEC. S.E.D., S.P.D.
C24	FIREPLACE FP-12, SEE SPEC. S.E.D., S.P.D.
C25	FIREPLACE FP-13, SEE SPEC. S.E.D., S.P.D.
C25.1	FIREPLACE FP-14, SEE SPEC. S.E.D., S.P.D.
C25.2	FIREPLACE FP-15, SEE SPEC. S.E.D., S.P.D.
C25.3	FIREPLACE FP-16, SEE SPEC. S.E.D., S.P.D.
C25.4	FIREPLACE FP-17, SEE SPEC. S.E.D., S.P.D.
C25.5	FIREPLACE FP-18, SEE SPEC. S.E.D., S.P.D.
C26	FIREPLACE FLUE POWER VENT TERMINATION, S.M.D., SEE EXT. ELEVS
C27	PORTABLE HOT TUB-SPA 5 PERSON "ARIA" PER SPEC., S.P.D., S.E.D.
C27.1	PORTABLE HOT TUB-SPA 3 PERSON "JETSETTER" PER SPEC., S.P.D., S.E.D.
C28	ZUMA TUB C7230, SEE SPEC.
C29	ZUMA TUB C7236, SEE SPEC.
C30	ZUMA TUB B7238FS, SEE SPEC.
C31	ZUMA TUB C6636, SEE SPEC.
C32	ZUMA TUB CD7840, SEE SPEC.
C33	KOHLER TUB MEMORS K-721K/722, SEE SPEC.
C34	BLU TUB BT0105, SEE SPEC.
C35	KOHLER TUB VILLAGER K-713, SEE SPEC.

LICENSED ARCHITECT
A. JAMES THORSON
2550
NEW YORK, NY

HART HOWERTON
One Union Street, San Francisco, CA 94111
Tel: 415.439.2300 Fax: 415.439.2201
Email: sh@harthowerton.com



**YELLOWSTONE CLUB
VILLAGE CORE**
Big Sky, Montana
USA

© Hart Howerton 2016
The design and concepts shown on this site plan are the property of Hart Howerton and may not be reproduced without the prior written consent of Hart Howerton.

S.C.A.L.E.
NOTE: THIS DRAWING IS SPREAD OVER SEVERAL DRAWINGS. USE DIMENSIONS FROM THIS DRAWING OR FROM SEPARATE DRAWINGS. DIMENSIONS ARE GIVEN IN FEET AND INCHES. DIMENSIONS THAT ARE NOT INDICATED ARE AS SHOWN.

DATE	ISSUE
02/27/2015	50% CD
10/09/2015	PROGRESS
03/10/2016	65% CD
04/22/2016	75% CD
06/10/2016	COORD. SET
07/08/2016	CONST. SET

NO	DATE	ISSUE
1	12/19/16	SI #14
2	1/27/17	SI #15
3	2/28/17	SI #17
4	4/10/17	SI #19
5	6/28/17	SI #24
6	8/10/17	SI #26
7	8/31/17	SI #27

DRAWING TITLE:
CONDO FLOOR PLANS
CONDO #2-303

PROJECT #:
14408

DRAWN BY:
DK, MA, SB, GS

CHECKED BY:
DEA, JK

DRAWING NO.:
A5.12A

01 CONDO 2-303 FLOOR PLAN
1/4" = 1'-0"

CONDO KEY PLAN

