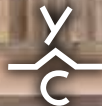


THREE SPRINGS | IC

11C Lower Trifecta Trail



YELLOWSTONE CLUB



TWO-CAR GARAGE



STAIRCASE



- THREE SPRINGS 1C - 11C LOWER TRIFECTA TRAIL

The Three Springs neighborhood at Yellowstone Club is comprised of seven triplex buildings overlooking the Club's event barn and creek. The 21 units are orientated to maximize views in all directions, showcasing Pioneer Mountain, the Gallatin Range, the Spanish Peaks, and Lone Peak. Three Springs provides convenient access via a short drive or walk to the Village Core and all of the YC base area amenities.

Showcasing panoramic vistas on all sides, the Three Springs neighborhood at the Yellowstone Club features a tight knit community of mountain modern Residences. Comprised of seven triplex buildings, these are 21 units that overlook the creek and the Barn, the Club's event space. Just northwest of the private, championship 18-hole Tom Weiskopf-designed golf course, Members can enjoy a scenic course and incredible amenities where they can challenge their skillset. Luxurious base area amenities found at the Village Core are easily accessible via a short drive or walk up the mountain.

Set against a stunning backdrop of snow capped peaks visible in every direction, Three Springs 1C features the ideal setting to host unforgettable alpine getaways. Contemporary amenities and luxe services lend to ease of living, promoting time spent among nature. These homes boast an iconic setting invigorated with the vibrancy of the surrounding area with premier access to some of the world's most iconic ski slopes and championship golf course, memories made with loved ones are certain to last for generations.

- THREE SPRINGS IC -

11C LOWER TRIFECTA TRAIL

FEATURES

Unit A design with 5,450 square feet of heated living space

5 Bedrooms

7 Bathrooms

Two-car garage with garage storage system

Natural wood and stone exteriors

Spacious outdoor living spaces with
back side hot tub patio

Expansive windows frame beautiful panoramas of
the surrounding landscape

Intimate setting next to a fork of the Gallatin River

A mix of open communal living spaces and private living
spaces that create an ideal family retreat

Covered outdoor deck with southern and western views

This residence is located within Yellowstone Club, a 15,200 acre private, gated community located in Big Sky, Montana. Yellowstone Club is the world's only private ski and golf community, encompassing thousands of acres of private skiing along with a championship golf course designed by Tom Weiskopf. Additionally, whether looking to savor spectacular mountain panoramas, explore the vast wilderness or enjoy high-quality amenities, Yellowstone Club offers everything from fly fishing, hiking and biking trails to fine dining and spa services. Professional SnowSports, golf and outdoor recreation programs, along with dedicated children's activities, round out the unique Montana experience that is Yellowstone Club.



MAIN LEVEL DECK



GREAT ROOM



OPEN FLOOR PLAN



DINING



KITCHEN



ISLAND SEATING



MASTER SUITE



- THREE SPRINGS IC -
5,450 HEATED LIVABLE SQUARE FOOTAGE



A

B

C

GARAGE LEVEL

- THREE SPRINGS IC -
5,450 HEATED LIVABLE SQUARE FOOTAGE



LOWER LEVEL

- THREE SPRINGS IC -
5,450 HEATED LIVABLE SQUARE FOOTAGE



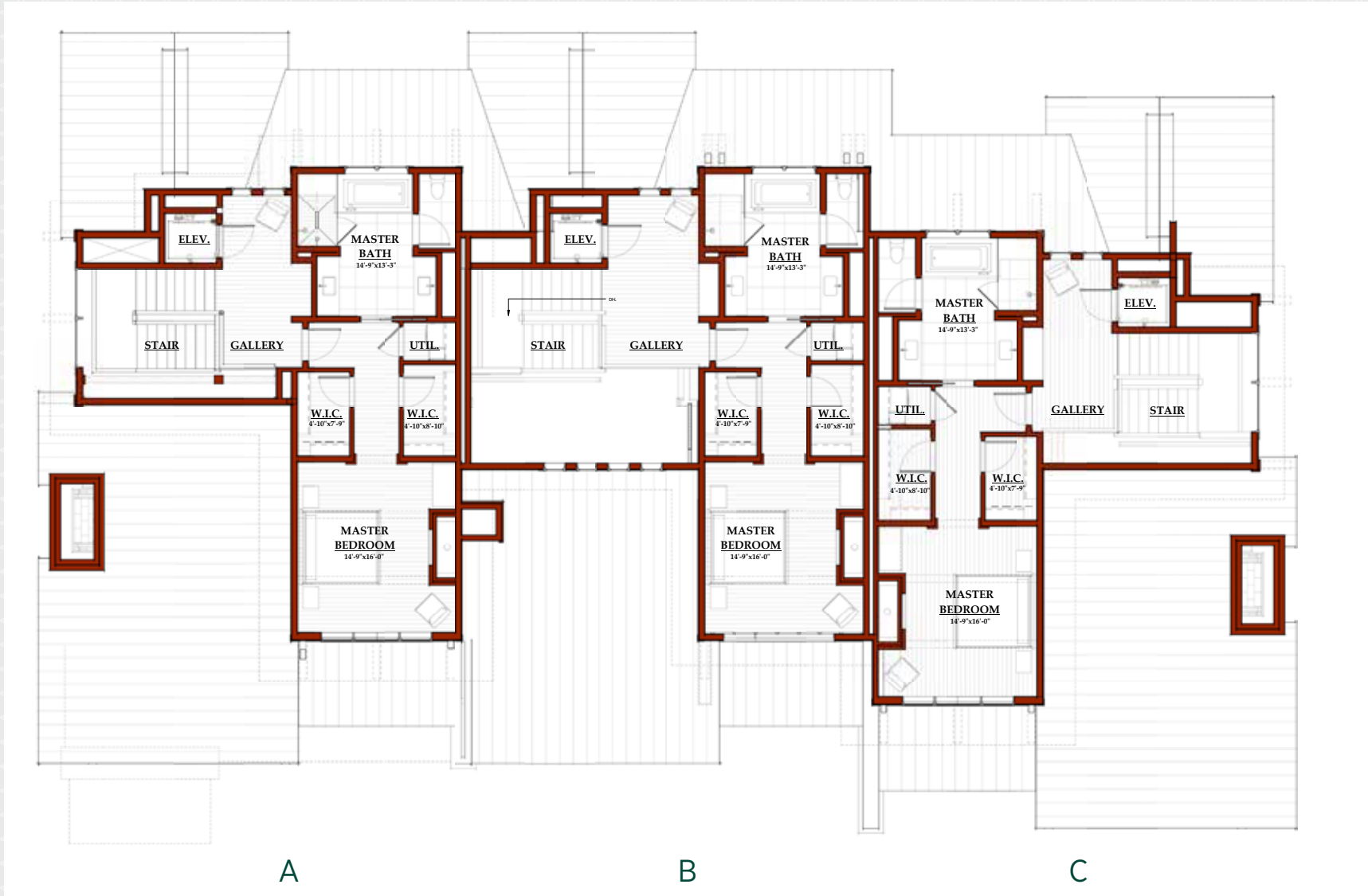
A

B

C

MAIN LEVEL

- THREE SPRINGS IC -
5,450 HEATED LIVABLE SQUARE FOOTAGE



UPPER LEVEL



STAIRCASE



LOWER LEVEL
FAMILY ROOM



GUEST SUITE #1





BUNK ROOM



GUEST BED #2



GUEST BATH #2



GUEST BED #3



GUEST BATH #3

KITCHEN

EXTERIOR DECK SPACES





BACK PATIO





BACK PATIO



BACK PATIO

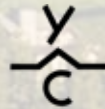


GARAGE



GARAGE

THREE SPRINGS



YELLOWSTONE CLUB®

For more information about this property and its pricing please contact YC Realty.

(888) 700-7748 | (406) 995-4900 | ycesales@yellowstoneclub.com | P.O. Box 161097 | Big Sky, Montana 59716

www.yellowstoneclub.com

All information deemed reliable, but not guaranteed. All acreages and square footages are estimates. The purchase of a home or homesite does not include membership in Yellowstone Club, or any right to use the private club facilities. Ownership of a home/homesite includes an obligation to pay assessments to a property owner's association. Please ask a sales associate for details. Photographs are representational of the approximate view corridors from the home. Livable square footages listed in this marketing piece are based upon the calculation of only the heated and livable areas within the exterior walls of the property and said square footages are deemed reliable, but not guaranteed. All acreages and square footages are estimates and are provided by the Seller or his designated representative; these measurements should not be a substitute for one's own evaluation and investigation. Ski accessibility is a relative term and can have different implications and meanings depending on the individual. One should investigate fully the property as it relates to its potential ski access and determine for themselves the degree of ski access the property might have or be developed. Buyer acknowledges and agrees that neither the Seller, the Broker, the Sales Associate nor any other real estate representative of the Yellowstone Club or its related affiliates have made any warranties or representations upon which Buyer has relied concerning the ski-in ski-out accessibility of the property. The determination of the level of ski access that a property might have will be the Buyers sole determination.

11/24