



RESIDENCE #36

Located on the sixth floor of Montage Big Sky, Residence 36 is a refined, modern retreat with open-concept living and high-end finishes. Vaulted ceilings and large windows bring in natural light and showcase stunning mountain views. The living area features a statement granite fireplace and an agate chandelier, creating a warm and inviting space. The kitchen is designed for entertaining, with sleek paneled cabinetry, premium appliances, a wine and beverage cooler, and bar seating. A formal dining table sits beside a Juliet balcony, offering a scenic backdrop for gatherings.

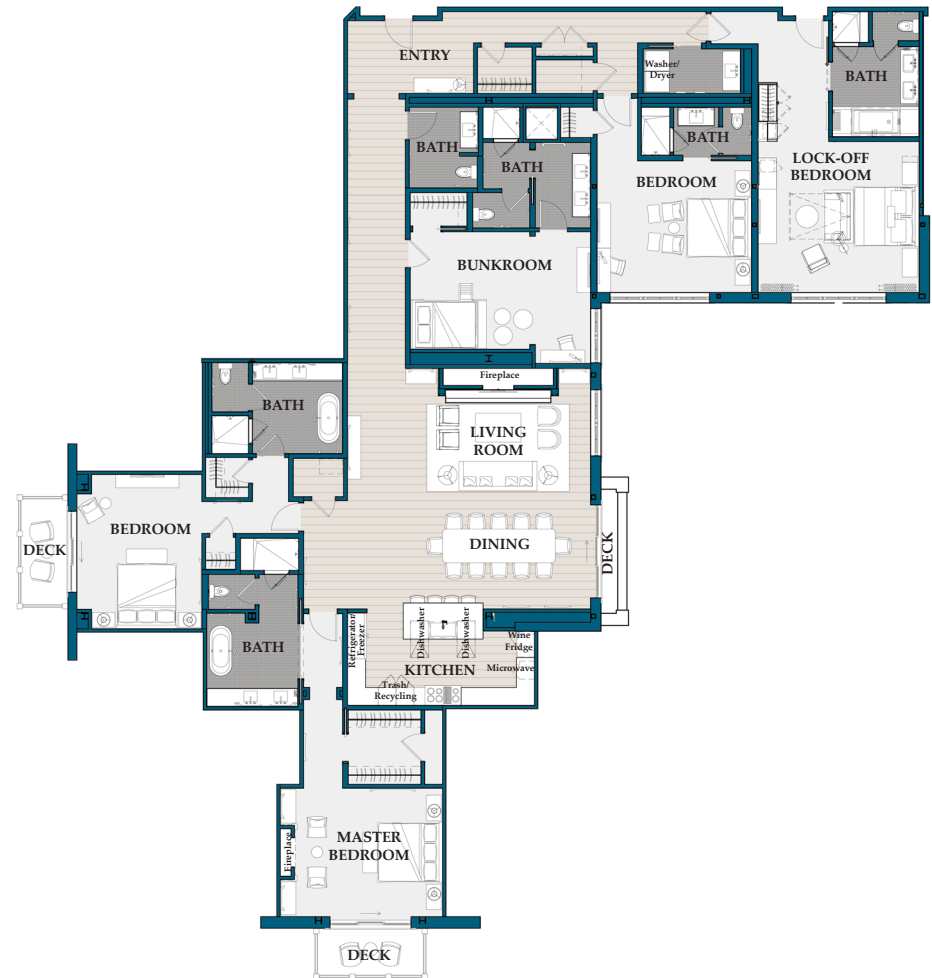
Each bedroom is named after a local landmark and features bold, custom-designed wallpaper and stylish furnishings. The owner's suite, "Table Mountain," includes a private balcony, a sitting area with a fireplace, a walk-in closet, and an ensuite bathroom with a soaking tub. The adjacent guest suite, "Beehive Basin," has two walk-in closets, an ensuite bathroom, vaulted ceilings, and a private balcony.

Down the hall, the bunk room, "Wilson Peak," features two full-sized timber beds, a lounge with a TV and swivel chairs, and an ensuite bathroom with a double vanity. Another guest suite, "Ousel Falls," offers a canopy bed, a sitting area, and an ensuite bathroom, all accented with digitally designed wall coverings. The lock-off bedroom provides additional privacy with its own entrance, ensuite bath, and lounge area, making it ideal for guests or rental use.

Conveniently located near the entry, the laundry room and powder bathroom add to the home's functionality. Whether used as a personal retreat or an entertainment hub, Residence 36 seamlessly blends luxury, comfort, and adventure in the heart of Big Sky.

Residence 36

4,942 sq. ft. / Bedrooms: 5 / Bathrooms: 5 + 1 Powder Room / Lock-off / Level 6



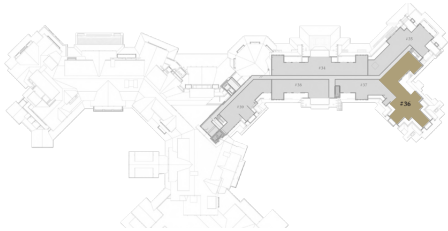
YELLOWSTONE CLUB®

For more information about this property and its pricing please contact YC Realty.
(406) 995-4900 | ycsales@yellowstoneclub.com | Big Sky, Montana 59716
www.yellowstoneclub.com

All information deemed reliable, but not guaranteed. All acreages and square footages are estimates. The purchase of a home or homestead does not include membership in Yellowstone Club, or any right to use the private club facilities. Ownership of a home/homestead includes an obligation to pay assessments to a property owner's association. Please ask a sales associate for details. Photographs are representative of the approximate view corridors from the home. Livable square footages listed in this marketing piece are based upon the calculation of only the heated and livable areas within the exterior walls of the property and said square footages are deemed reliable, but not guaranteed. All acreages and square footages are estimates and are provided by the Seller or his designated representative; these measurements should not be a substitute for one's own evaluation and investigation. Ski accessibility is a relative term and can have different implications and meanings depending on the individual. One should investigate fully the property as it relates to its potential ski access and determine for themselves the degree of ski access the property might have or be developed. Buyer acknowledges and agrees that neither the Seller, the Broker, the Sales Associate nor any other real estate representative of the Yellowstone Club or its related affiliates have made any warranties or representations upon which Buyer has relied concerning the ski-in/ski-out accessibility of the property. The determination of the level of ski access that a property might have will be the Buyer's sole determination.

RESIDENCE #36

5 Bedrooms | 6 Bathrooms | 4,942 Sq. Ft.
One Level - Sixth Floor
Hotel #1613 / Owner Lock-Off #1615



Master Bedroom



Master Bath/Hall



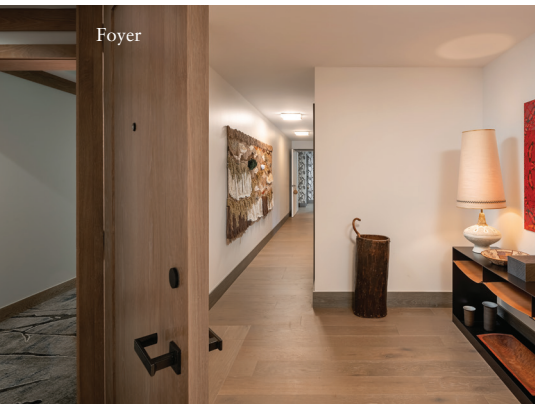
Open Floor Plan



Guest Bathroom



Guest Bedroom



Foyer



Kitchen



Bunk Room

