

# LAKE SIDE A-202



YELLOWSTONE CLUB®



## - LAKESIDE A-202 -

3,631 SQ FT | 5 BR | 5 BA

A Mountain escape shouldn't mean a retreat from everyday luxuries – thanks to the Yellowstone Club, being in the Rocky Mountains no longer means roughing it. The Lakeside Residences are an enclave of 22 condominiums located at the heart of Yellowstone Club and are loved for their proximity to Private Powder™, fine dining, concierge services, and of the boundless options for outdoor recreation. These grand residences are nestled in the base area feature elevator access, a central plaza with snowmelt system, and a covered Sky Bridge direct to the Warren Miller Lodge. These residences are carefully crafted to meet the exacting standards of the Yellowstone Club – think rooms filled with views, perfectly-placed fireplaces, and spaces that function flawlessly even when the home is filled with family and guests.

Lakeside Residence A202 is one of nine units with the five-bedroom design. This penthouse design features living spaces spread across two levels and over 3,631 square feet. Much of the home's main level features a crisp and inviting neutral palate, with warm wood flooring and accents, white cabinetry and walls, and light stone countertops. Kitchen and dining areas flow into a comfortable living room, where the gas fireplace is tucked into the wall, the windows are ceiling height, and the outdoor deck beckons. The main level features an office nook – currently transformed into additional guest space – a guest bedroom and bathroom, and a master bedroom with its own gas fireplace and spacious master bath.



Upstairs, a lofted recreation room overlooks the living space below and provides ideal space for movie nights, kids' gatherings, or quiet reading time. The upper level has an additional master bedroom, and two guest rooms. Both master suites feature northern views that frame Andesite Ridge, while the other bedrooms overlook the central plaza area. The clean yet warm design elements in the open kitchen, dining, and living room areas showcase the unrivaled attention to detail apparent throughout Lakeside A-202 and

set the stage for a thoroughly mountain modern experience. Each of the five bedrooms in the condominium will provide sanctuary after days spent exploring Yellowstone Club's thousands of acres of Private Powder, playing golf on its Tom Weiskopf-designed mountain course, or enjoying activities on Warren Miller Lake. The home's deck will offer a welcome retreat from which to enjoy bright alpine mornings and cool mountain evenings.

This residence is located within Yellowstone Club, a 15,200 acre private, gated community located in Big Sky, Montana. Yellowstone Club is the world's only private ski and golf community, encompassing thousands of acres of private skiing along with a championship golf course designed by Tom Weiskopf. Additionally, whether looking to savor spectacular mountain panoramas, explore the vast wilderness or enjoy high-quality amenities, Yellowstone Club offers everything from fly fishing, hiking and biking trails to fine dining and spa services. Professional SnowSports, golf and outdoor recreation programs, along with dedicated children's activities, round out the unique Montana experience that is Yellowstone Club.

## FEATURES

5 Bedrooms

5 Bathrooms

One of 9, five-bedroom designs in the Village Lakeside Condos

Penthouse design features five bedrooms on two levels

3,631 heated livable square footage

One designated parking space in the parking garage

Elevator access to parking garage and street-level parking

Short walk (via Sky Bridge or across the road) to Warren Miller Lodge

Condominium Association handles common-area maintenance



GREAT ROOM



DINING ROOM/KITCHEN



KITCHEN

202



ELEVATOR ACCESS



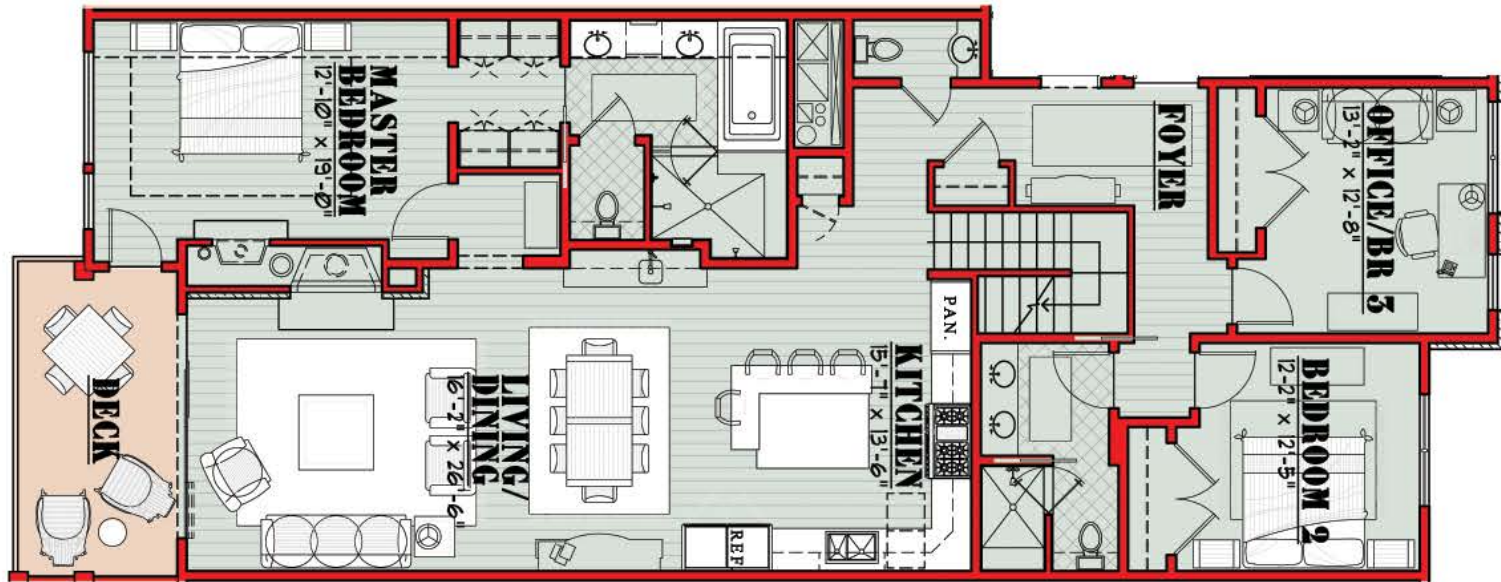
MASTER BEDROOM





MASTER BATHROOM

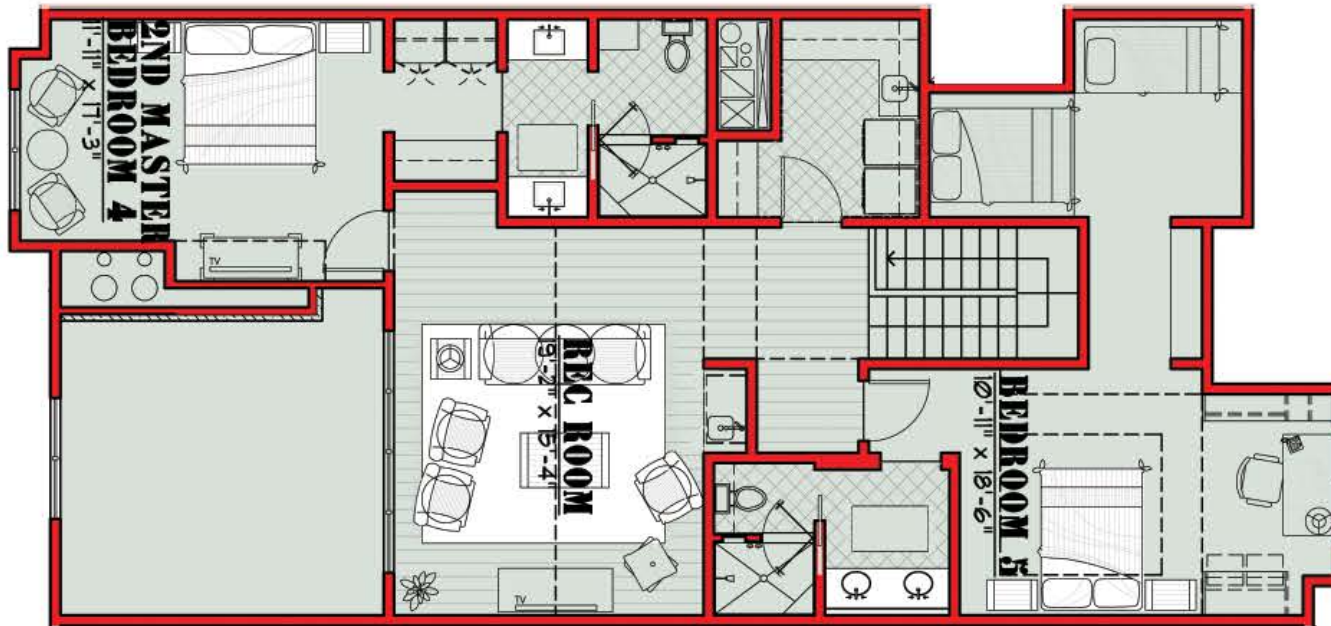
- LAKESIDE A-202 -



MAIN LEVEL

*Kitchen / Living Room / Dining Room  
Master Bedroom / Master Bathroom  
Guest Bedrooms / Guest Bathrooms / Deck*

- LAKESIDE A-202 -



UPPER LEVEL

*Master Bedroom / Master Bathroom*

*Guest Bedroom / Guest Bathrooms*

*Recreation Area*



LOFT LIVING ROOM





GUEST BATHROOM

GUEST BEDROOM



GUEST BATHROOM



GUEST BEDROOM



GUEST BATHROOM



GUEST BEDROOM





GUEST BATHROOM



GUEST BEDROOM



GUEST BEDROOM



BUNK ROOM



BUNK ROOM/BATHROOM



YELLOWSTONE CLUB®

For more information about this property and its pricing please contact YC Realty.  
(406) 995-4900 | [ycesales@yellowstoneclub.com](mailto:ycesales@yellowstoneclub.com) | P.O. Box 161097 | Big Sky, Montana 59716  
[www.yellowstoneclub.com](http://www.yellowstoneclub.com)

All information deemed reliable, but not guaranteed. All acreages and square footages are estimates. The purchase of a home or homesite does not include membership in Yellowstone Club, or any right to use the private club facilities. Ownership of a home/homesite includes an obligation to pay assessments to a property owner's association. Please ask a sales associate for details. Photographs are representational of the approximate view corridors from the home. Livable square footages listed in this marketing piece are based upon the calculation of only the heated and livable areas within the exterior walls of the property and said square footages are deemed reliable, but not guaranteed. All acreages and square footages are estimates and are provided by the Seller or his designated representative; these measurements should not be a substitute for one's own evaluation and investigation. Ski accessibility is a relative term and can have different implications and meanings depending on the individual. One should investigate fully the property as it relates to its potential ski access and determine for themselves the degree of ski access the property might have or be developed. Buyer acknowledges and agrees that neither the Seller, the Broker, the Sales Associate nor any other real estate representative of the Yellowstone Club or its related affiliates have made any warranties or representations upon which Buyer has relied concerning the ski-in ski-out accessibility of the property. The determination of the level of ski access that a property might have will be the Buyers sole determination.