

# FLAG NOTES

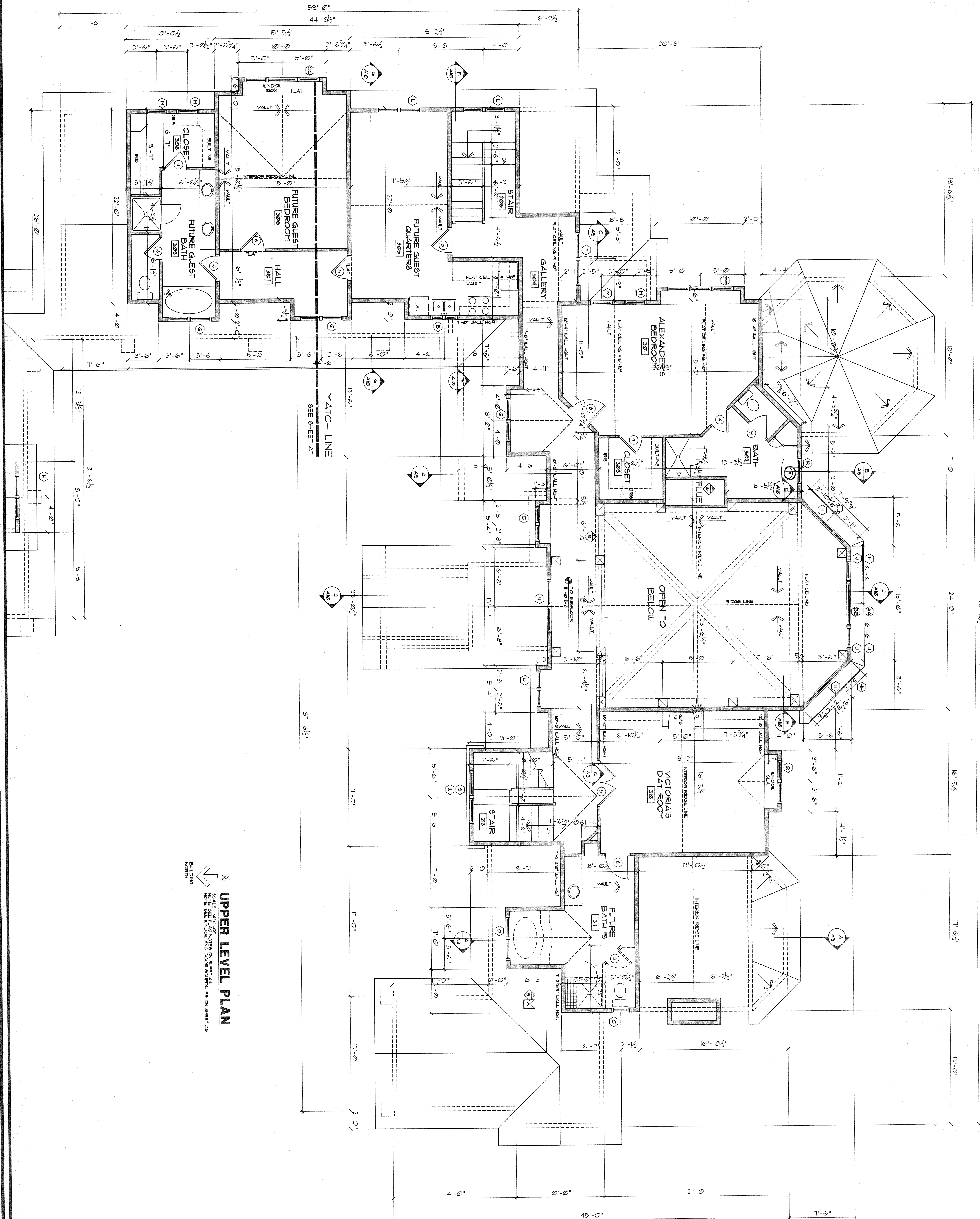
1. FOUNDATION LINE BELOW
2. GARAGE HOUSING OCCUPANCY SEPARATION SIDE
3. TYPICAL EXTERIOR WALL ASSEMBLY
4. TYPICAL INTERIOR WALL ASSEMBLY
5. WARDROBE HOOKUP, VENT DRYER TO
6. FLE AND CHASE
7. DIRECT VENT GAS FIREPLACE

## MAIN LEVEL PLAN

SCALE: 1/8" = 1'-0"  
NOTE: SEE WINDOW AND DOOR SCHEDULES ON SHEET A6

MAIN LEVEL FINISHED AREA	3563 SQFT.
UPPER LEVEL FINISHED AREA	5500 SQFT.
UPPER LEVEL UNFINISHED AREA	1060 SQFT.
LOWER LEVEL UNFINISHED AREA	148 SQFT.
LOWER LEVEL FINISHED AREA	363 SQFT.
	6295 SQFT.





PRICING ISSUE - NOT FOR CONSTRUCTION

**KEN PIEPER**

**KEN PIEPER RESIDENTIAL DESIGNS INC.**  
 RESIDENTIAL DESIGN AND MARKETING SPECIALISTS  
 35715 US Hwy 40, Suite D306 Evergreen, CO. 80439  
 Phone: (303)670-0619 FAX: (303)670-1018  
 E-MAIL: KPRDKEN@AOL.COM

**A Custom Residence for:**  
**Brian & Victoria Klein**  
 Andesite Ridge Road - Lot 55  
 Yellowstone Club, Madison County, Montana

**6692**  
 PLAN NO.

**A5**

SHEET NO.  
 PROJECT 054704  
 ISSUED 1/22/01  
 REVISED  
 REVISED

"The use of these plans shall be restricted to the original project site for which they were prepared and publication thereof is expressly limited to such use. Reuse, reproduction, or publication by any method, in whole or in part, is prohibited. Title to the plans remains with Ken Pieper Residential Design without prejudice. Visual contact with these plans shall constitute prima facie evidence of the acceptance of the restriction."



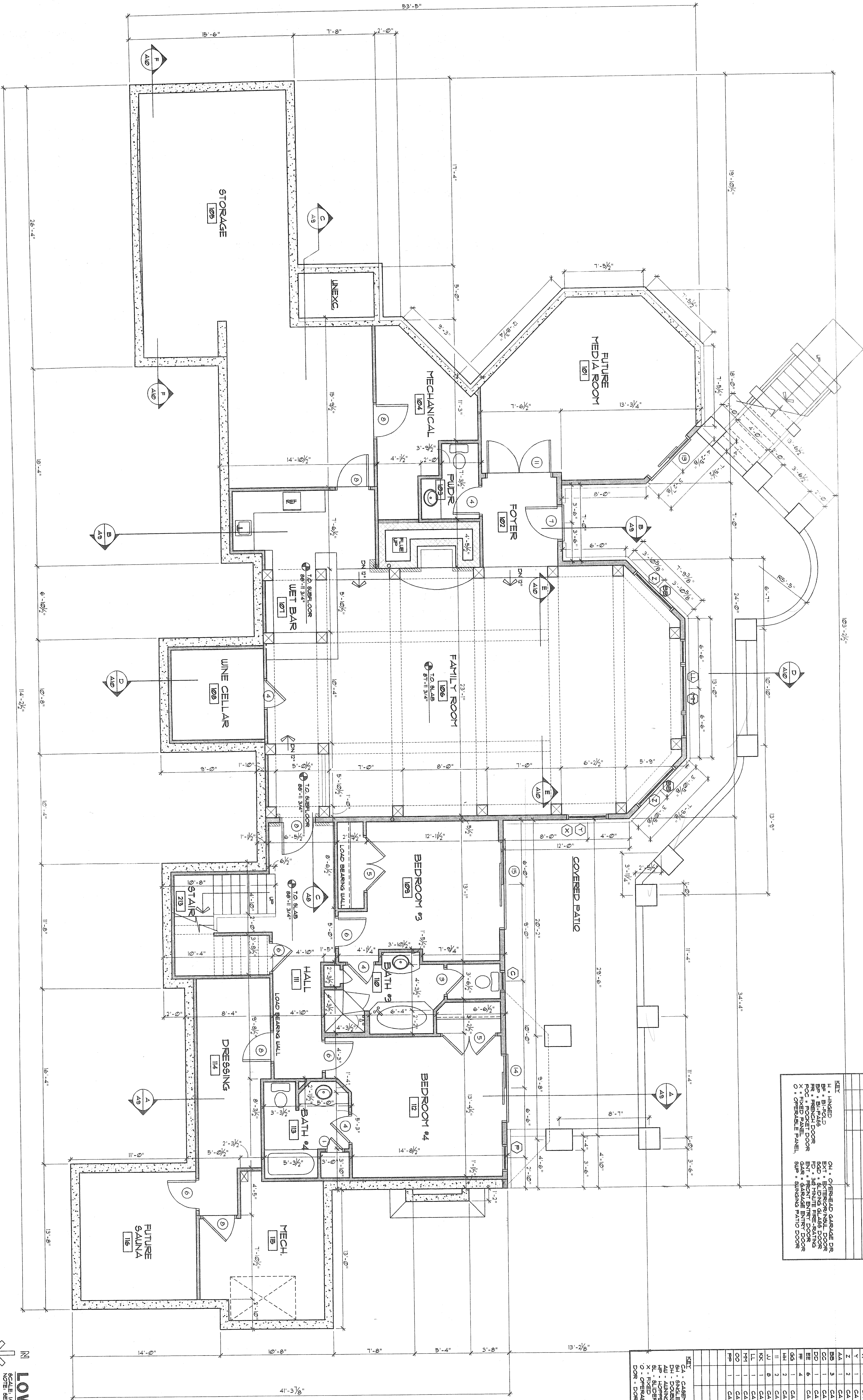
"The use of these plans shall be restricted to the original project site for which they were prepared and publication thereof is expressly limited to such use. Reuse, reproduction, or publication by any method, in whole or in part, is prohibited. Title to the plans remains with Ken Pieper Residential Design without prejudice. Visual contact with these plans shall constitute prima facie evidence of the acceptance of the restriction."

PROJECT NO. 054704  
ISSUED 1/22/01

100

A9

PRICING ISSUE - NOT FOR CONSTRUCTION


[illegible]

WINDOW SCHEDULE									
BTH		Q/LN	TYPE	WINDOW SIZE		REMARKS			
A	2		CA	3'-0 1/8"	2'-0 1/8"	O-Temp			
B	1		CA	3'-0 1/8"	2'-0 1/8"	O			
C	3		CA	3'-0 1/8"	2'-0 1/8"	O-O			
D	5		CA	3'-0 1/8"	2'-0 1/8"	O-O			
E	4		CA	2'-0 1/8"	2'-0 1/8"	O-O-Temp			
F	1		CA	2'-0 1/8"	2'-0 1/8"	O-O			
G	1		CA	3'-0 1/8"	2'-0 1/8"	X			
H	2		CA	3'-0 1/8"	2'-0 1/8"	O-X			
J	2		CA	2'-0 1/8"	2'-0 1/8"	X			
K	2		CA	2'-0 1/8"	2'-0 1/8"	O-O			
L	2		CA	2'-0 1/8"	2'-0 1/8"	O-O			
M	1		CA	2'-0 1/8"	2'-0 1/8"	O			
N	1		CA	2'-0 1/8"	2'-0 1/8"	O			
O	5		CA	3'-0 1/8"	2'-0 1/8"	O-O-Temp			
P	1		CA	2'-0 1/8"	2'-0 1/8"	O-O-Temp			
Q	4		CA	3'-0 1/8"	2'-0 1/8"	O-O-Temp			
R	1		CA	3'-0 1/8"	2'-0 1/8"	O-O-Temp			
S	1		CA	3'-0 1/8"	2'-0 1/8"	O-O-Temp			
T	1		CA	3'-0 1/8"	2'-0 1/8"	O-O-Temp			
U	1		CA	3'-0 1/8"	2'-0 1/8"	O-X			
V	1		CA	3'-0 1/8"	2'-0 1/8"	O			
W	1		CA	3'-0 1/8"	2'-0 1/8"	X			
X	1		CA	4'-0 1/8"	2'-0 1/8"	X			
Y	1		CA	4'-0 1/8"	2'-0 1/8"	X			
Z	2		CA	5'-0 1/8"	2'-0 1/8"	TR-X			
AA	1		CA	5'-0 1/8"	2'-0 1/8"	TR-X			
BB	3		CA	5'-0 1/8"	2'-0 1/8"	X			
CC	1		CA	5'-0 1/8"	2'-0 1/8"	X			
DD	1		CA	5'-0 1/8"	2'-0 1/8"	TR-X			
EE	6		CA	6'-0 1/8"	2'-0 1/8"	TR-X			
FF	4		CA	2'-0 1/8"	2'-0 1/8"	TR-X			
GH	1		CA	1'-0 1/8"	2'-0 1/8"	X-X-X			
IH	2		CA	1'-0 1/8"	2'-0 1/8"	X-X-X			
JH	1		CA	1'-0 1/8"	2'-0 1/8"	X-X-X			
KH	1		CA	1'-0 1/8"	2'-0 1/8"	X-X-X			
LH	1		CA	1'-0 1/8"	2'-0 1/8"	X-X-X			
MM	1		CA	2'-0 1/8"	2'-0 1/8"	O-O-Temp			
NN	1		CA	2'-0 1/8"	2'-0 1/8"	TR-X-X-X			
OO	1		CA	2'-0 1/8"	2'-0 1/8"	O-O-X			
PP	1		CA	2'-0 1/8"	2'-0 1/8"	O-X-X			

**LOWER LEVEL PLAN**

SCALE: 1/4" = 1'-0"

NOTE: SEE FLAG NOTES ON SHEET A4

 N

BUILDING  
NORTH





**A Custom Residence for:  
Brian & Victoria Klein  
Andesite Ridge Road - Lot 55  
Yellowstone Club, Madison County, Montana**

PLAN NO.  
**6692**

PROJECT 054704  
NO. 1/22/01  
ISSUED

"The use of these plans shall be restricted to the original project site for which they were prepared and publication thereof is expressly limited to such use. Reuse, reproduction, or publication by any method, in whole or in part, is prohibited. Title to the plans remains with Ken Pieper Residential Design without prejudice. Visual contact with these plans shall constitute prima facie evidence of the acceptance of the restriction."

PROJECT NO. 054704  
ISSUED 1/22/01  
REVISED  
REVISED  
REVISED  
REVISED

A7