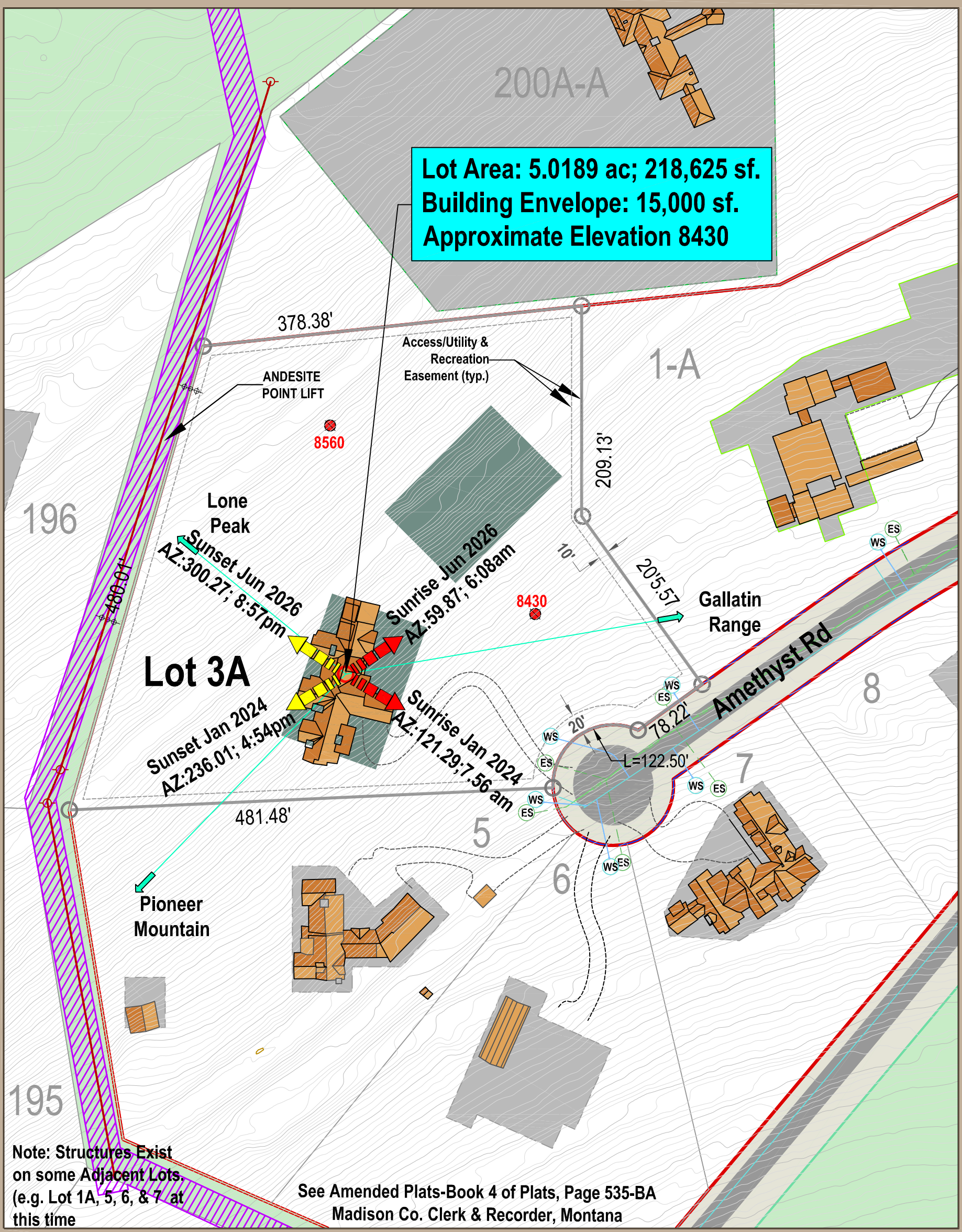


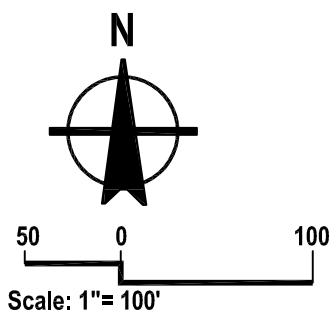
**Lot Area: 5.0189 ac; 218,625 sf.
Building Envelope: 15,000 sf.
Approximate Elevation 8430**



Note: Structures Exist on some Adjacent Lots (e.g. Lot 1A, 5, 6, & 7 at this time)

See Amended Plats-Book 4 of Plats, Page 535-BA
Madison Co. Clerk & Recorder, Montana

Easements
In addition to the easements shown, all lots are subject to the following access, utility, and recreation easements:
- 20' along lot lines fronting access easements unless noted
- 10' along side and rear lot lines unless noted.



YELLOWSTONE CLUB
Andesite Pointe
Lot 3A
February 2024

GENERAL LEGEND:

	LOT LINES		EXISTING WATER MAIN WITH VALVE, HYDRANT & WATER SERVICE		WETLAND AREAS (APPROXIMATE LOCATION)
	MOUNTAIN VIEW DIRECTION		EXISTING SANITARY SEWER MAIN, CLEAN OUT, & EXISTING SEWER SERVICE		ROAD & 60' WIDE RIGHT-OF-WAY ROAD EASEMENT
	CONTOURS=5' "X"=SPOT ELEVATION, WITH ELEVATION AS DESIGNATED		UTILITY EASEMENTS		DRIVEWAY ACCESS
	BUILDING SETBACK		PRIVATE ACCESS EASEMENTS		OPEN SPACE
	BUILDING ENVELOPE		DRAINFIELD & ALTERNATE DRAINFIELD LOCATION		PROPOSED SKI TRAIL EASEMENT (APPROX. LOC.)
	EXISTING HOME (APPROX. LOC.)				EXISTING SKI LIFT & DIRECTION ARROW
					EXISTING SKI TOWER (APPROX. LOC.)

Directional view arrows and notations are approximate and are only to provide a general indication of the direction towards a view.
Developer reserves the right to make changes without notice. This document is for schematic purposes only and is subject to change without notice.
Please see Yellowstone Club authorized personnel for additional information. This document should not be a substitute for a personal site visit and inspection.