

- AMERICAN SPIRIT 855 -



Immediate ski access to thousands of acres of private terrain, close proximity to on-mountain dining and spa amenities, incredible views of iconic mountains - the American Spirit neighborhood at Yellowstone Club has it all. Situated on one of the larger lots in the neighborhood, American Spirit 855 will provide the foundation for a home that will include and have access to everything the neighborhood has to offer. This .57 acre lot offers a 18,545 sq. ft. building envelope and situates owners for beautiful views of Lone Peak, Pioneer Mountain, and the Spanish Peaks. The Cabin Fever ski run, accessible via open space that abuts part of the southwest border of the lot, provides quick access to YC's American Spirit lift for a hassle-free ski in/ski out experience.

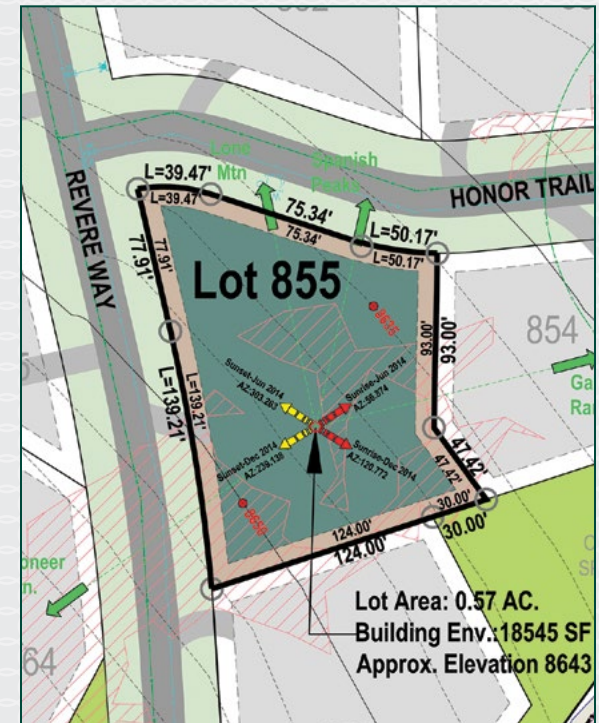
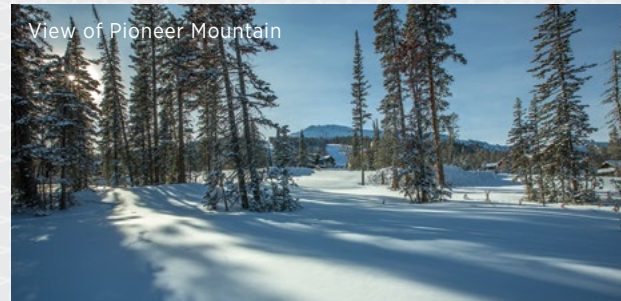
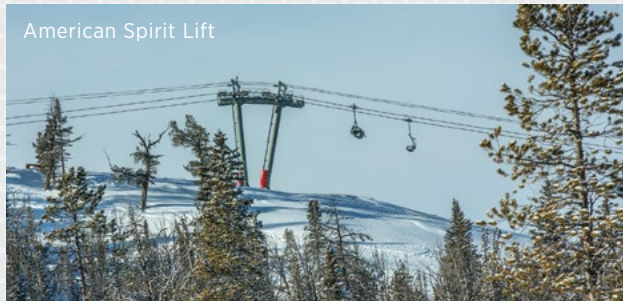
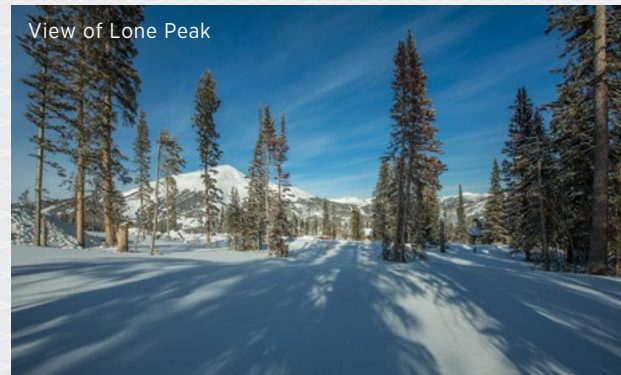


YELLOWSTONE CLUB®

- AMERICAN SPIRIT 855 -

FEATURES

- .57 acre lot
- Building envelope: 18,545 square feet
- Open space to the southwest of the lot allows for easy ski access and privacy
- Views of Pioneer Mountain, Lone Peak, and the Spanish Peaks
- Ski in/ski out access via the Cabin Fever ski run/ American Spirit lift
- Short drive to Rainbow Lodge



For more information about this property and its pricing please contact YC Realty.
(888) 700-7748 | (406) 995-4900 | ycsales@yellowstoneclub.com | P.O. Box 161097 | Big Sky, Montana 59716
www.yellowstoneclub.com

All information deemed reliable, but not guaranteed. All acreages and square footages are estimates. The purchase of a home or homesite does not include membership in Yellowstone Club, or any right to use the private club facilities. Ownership of a home/homesite includes an obligation to pay assessments to a property owner's association. Please ask a sales associate for details. Photographs are representational of the approximate view corridors from the home. Livable square footages listed in this marketing piece are based upon the calculation of only the heated and livable areas within the exterior walls of the property and said square footages are deemed reliable, but not guaranteed. All acreages and square footages are estimates and are provided by the Seller or his designated representative; these measurements should not be a substitute for one's own evaluation and investigation. Ski accessibility is a relative term and can have different implications and meanings depending on the individual. One should investigate fully the property as it relates to its potential ski access and determine for themselves the degree of ski access the property might have or be developed. Buyer acknowledges and agrees that neither the Seller, the Broker, the Sales Associate nor any other real estate representative of the Yellowstone Club or its related affiliates have made any warranties or representations upon which Buyer has relied concerning the ski-in ski-out accessibility of the property. The determination of the level of ski access that a property might have will be the Buyers sole determination.