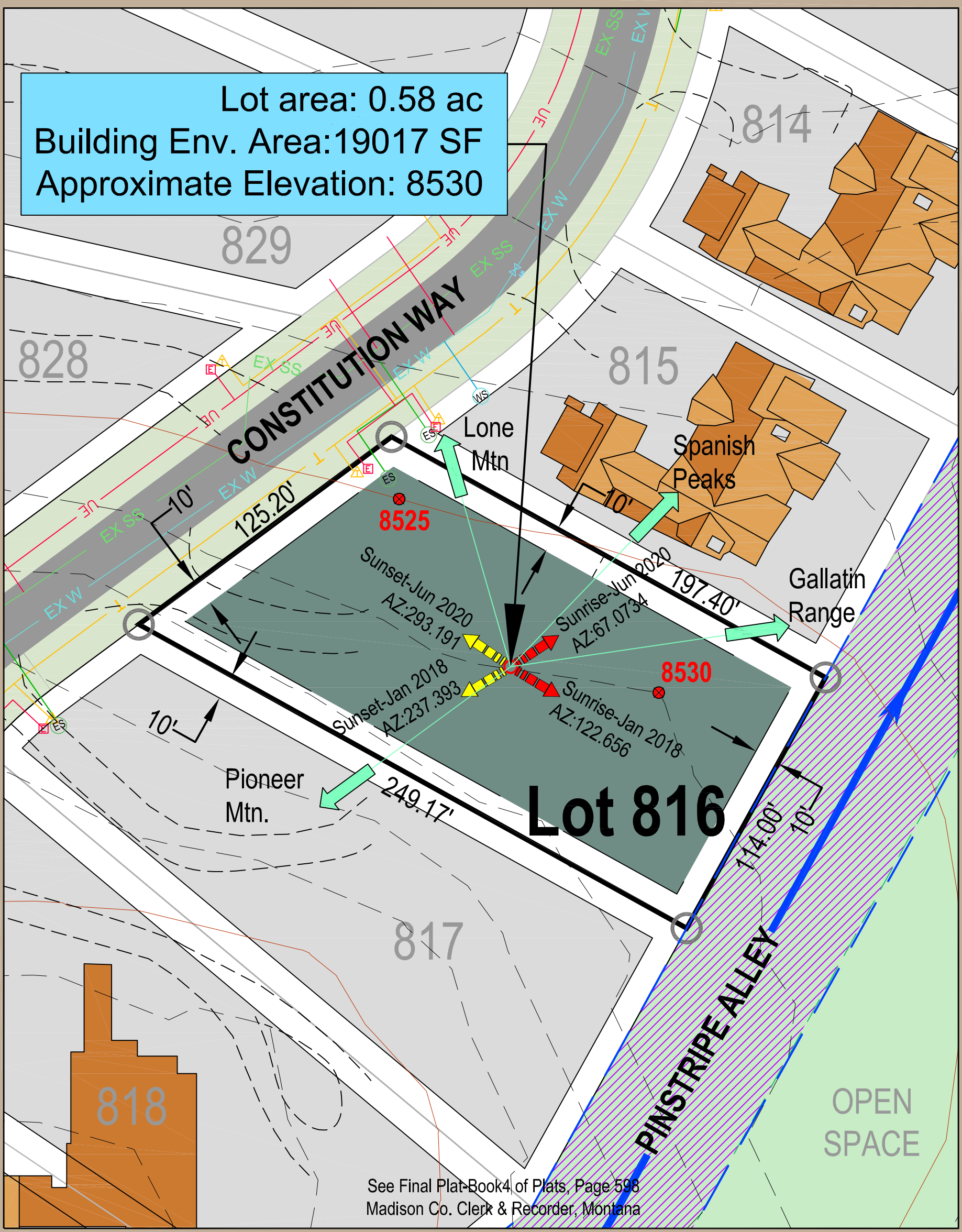


Lot area: 0.58 ac
Building Env. Area: 19017 SF
Approximate Elevation: 8530



See Final Plat-Book4 of Plats, Page 598
Madison Co. Clerk & Recorder, Montana

Easements

In addition to the easements shown, all lots are subject to the following access, utility, and recreation easements:
- 10' along lot lines fronting access easements unless noted
- 10' along side and rear lot lines unless noted.

Scale: 1"= 40'

American Spirit
Lot 816
March 2018

GENERAL LEGEND:

LOT LINES	EXISTING WATER MAIN WITH VALVE, HYDRANT & WATER SERVICE	WETLAND AREAS (APPROXIMATE LOCATION)
MOUNTAIN VIEW DIRECTION	EXISTING SANITARY SEWER MAIN, CLEAN OUT, & EXISTING SEWER SERVICE	ROAD & 60' WIDE RIGHT-OF-WAY ROAD EASEMENT
CONTOURS=5'	EXISTING UNDERGROUND ELECTRICAL	DRIVEWAY ACCESS
'X'=SPOT ELEVATION, WITH ELEVATION AS DESIGNATED	EXISTING TELEPHONE	OPEN SPACE
BUILDING SETBACK	UTILITY EASEMENTS	PROPOSED SKI TRAIL EASEMENT (APPROX. LOC.)
BUILDING ENVELOPE	PRIVATE ACCESS EASEMENTS	PROPOSED SKI WAY CROSSING EASEMENT (APPROXIMATE LOCATION)
EXISTING HOME (APPROX. LOC.)		EXISTING SKI LIFT & DIRECTION ARROW
DRAINFIELD & ALTERNATE DRAINFIELD LOCATION		EXISTING SKI TOWER (APPROX. LOC.)

Directional view arrows and notations are approximate and are only to provide a general indication of the direction towards a view.
Developer reserves the right to make changes without notice. This document is for schematic purposes only and is subject to change without notice.
Please see Yellowstone Club authorized personnel for additional information. This document should not be a substitute for a personal site visit and inspection.