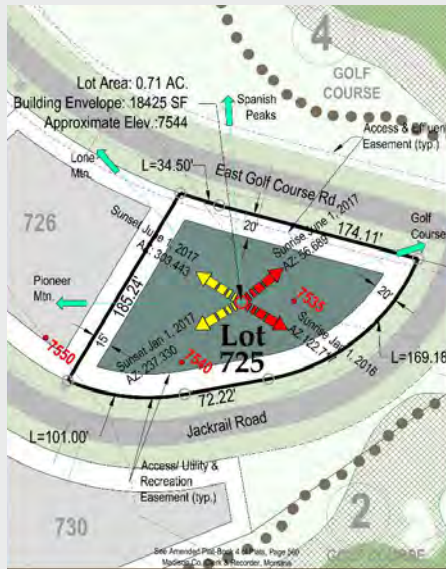




Alpine Greens 725



Alpine Greens 725

Tucked alongside the lush fairways of the Yellowstone Club's 18-hole championship course, this homesite in Alpine Greens offers an exceptional location for golf enthusiasts and nature lovers alike. Positioned adjacent to Hole #2 and directly across from Hole #4, the lot provides a front-row seat to sweeping course views, with iconic Lone Peak rising in the distance as a stunning backdrop.

With a gentle grade and lot size of .71 acres, this site offers flexibility for designing your dream mountain home. Enjoy immediate access to the driving range, clubhouse, and nearby amenities—combining convenience with the serenity of mountain living. Whether you're envisioning a summer retreat or a year-round escape, this property presents a rare opportunity in one of the most scenic and coveted neighborhoods in the Club.

For more information about this property and its pricing
please contact YC Realty.

Features

- ◆ Looking over Hole 4 of the Tom Weiskopf- designed golf course
- ◆ .71 acre homesite
- ◆ Unique corner location
- ◆ Astounding views of Lone Peak and the Spanish Peaks
- ◆ Short drive from The Clubhouse

(888) 700-7748 ♦ (406) 995-4900
ycesales@yellowstoneclub.com
P.O. Box 161097 ♦ Big Sky, Montana 59716
www.yellowstoneclub.com

All information deemed reliable, but not guaranteed. All acreages and square footages are estimates. The purchase of a home or homesite does not include membership in Yellowstone Club, or any right to use the private club facilities. Ownership of a home/homesite includes an obligation to pay assessments to a property owner's association. Please ask a sales associate for details. Photographs are representational of the approximate view corridors from the home. Livable square footages listed in this marketing piece are based upon the calculation of only the heated and livable areas within the exterior walls of the property and said square footages are deemed reliable, but not guaranteed. All acreages and square footages are estimates and are provided by the Seller or his designated representative; these measurements should not be a substitute for one's own evaluation and investigation. Ski accessibility is a relative term and can have different implications and meanings depending on the individual. One should investigate fully the property as it relates to its potential ski access and determine for themselves the degree of ski access the property might have or be developed. Buyer acknowledges and agrees that neither the Seller, the Broker, the Sales Associate nor any other real estate representative of the Yellowstone Club or its related affiliates have made any warranties or representations upon which Buyer has relied concerning the ski-in ski-out accessibility of the property. The determination of the level of ski access that a property might have will be the Buyers sole determination.