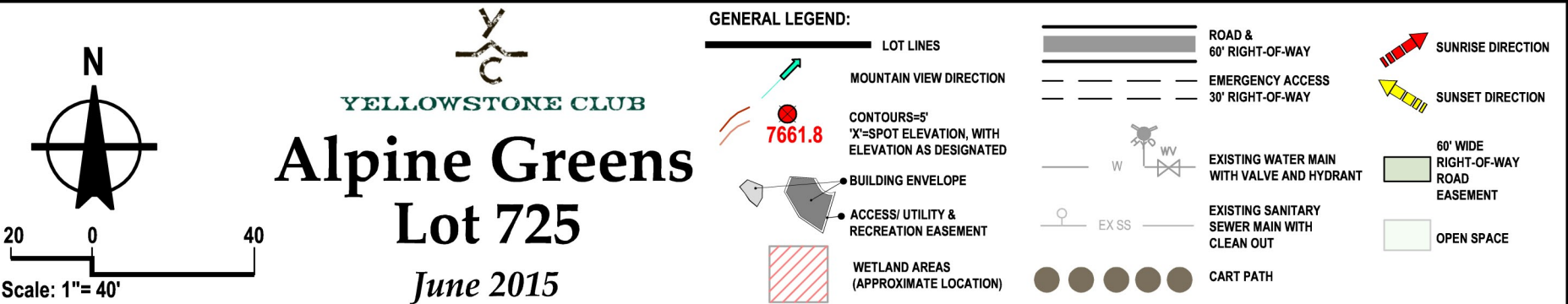


**Easements**  
In addition to the easements shown, all lots are subject to the following access, utility, and recreation easements:  
- 20' along lot lines fronting access easements unless noted  
- 15' along side and rear lot lines unless noted.



Directional view arrows and notations are approximate and are only to provide a general indication of the direction towards a view.  
Developer reserves the right to make changes without notice. This document is for schematic purposes only and is subject to change without notice.  
Please see Yellowstone Club authorized personnel for additional information. This document should not be a substitute for a personal site visit and inspection.