



# Alpine Greens 722

274 East Golf Course Road



DINING ROOM







FLOOR TO CEILING WINDOWS WITH LONE PEAK VIEWS



CUSTOM TIMBER CEILINGS





KITCHEN



ADDITIONAL BAR SEATING






# Alpine Greens 722

Situated in a prime location adjacent to the renowned Tom Weiskopf-designed golf course at the Yellowstone Club, the Alpine Greens neighborhood features immediate ski and golf access, plus close proximity to upscale base area amenities, life here unfolds seamlessly, filled with unforgettable alpine experiences that make each day extraordinary.

Thoughtfully designed to blur the lines between the interior and outdoors, a striking panorama that spans from Lone Peak to the Spanish Peaks frames an iconic backdrop in the main living space. An open concept floor plan creates an inviting atmosphere. In the living room, a lounge tucked around a fireplace offers a peaceful haven on snowy nights. Sleek and refined, the kitchen features contrasting accents of white marble and the richness of dark wood, crafting a harmonious visual balance that boasts timeless elegance. A central island with countertop seating hosts the perfect perch for guests to enjoy appetizers. Sliding glass doors open to an outdoor living room featuring a barbecue, dining table, firepit, and lounge, where endless summer nights are best enjoyed. Connecting to the garage, a mudroom with storage lockers and a laundry room provide convenience while transitioning to and from the daily adventure.

The primary suite is an idyllic sanctuary for relaxation, where the soft, amber glow of a fireplace evokes a sense of tranquility. A spacious walk-in closet and an en-suite bathroom with a steam shower and soaking tub ensure a spa-like experience right from home. A pocket door opens to a multipurpose room, providing Owners the flexibility to create a home office, nursery, or whatever fits their lifestyle.

 **7,389 square feet**  
 **9 bath**  
 **7 bed**

- ◆ 0.64 acre lot
- ◆ 3-car garage
- ◆ Immediate access to the Tom Weiskopf-designed golf course
- ◆ Close proximity to Alpine Greens Ski Lift
- ◆ Vistas of Pioneer, Lone Peak, the Gallatin Range, and the Spanish Peaks

*This residence is located within Yellowstone Club, a 15,200 acre private, gated community located in Big Sky, Montana. Yellowstone Club is the world's only private ski and golf community, encompassing thousands of acres of private skiing along with a championship golf course designed by Tom Weiskopf. Additionally, whether looking to savor spectacular mountain panoramas, explore the vast wilderness or enjoy high-quality amenities, Yellowstone Club offers everything from fly fishing, hiking and biking trails to fine dining and spa services. Professional Snowsports, golf and outdoor recreation programs, along with dedicated children's activities, round out the unique Montana experience that is Yellowstone Club.*



# Alpine Greens 722

The lower level of the home combines leisure activity with comfortable accommodations, providing an unparalleled retreat for both residents and guests. A secondary living room features a lounge set around a television, providing an unbeatable setting for movie nights while a game room encourages interactive entertainment. Doors open to a lower terrace, where a hot tub and fire pit boasts an iconic setting to host après cocktail parties. Ideal for large groups or families, a bunk room offers space to accommodate six guests where an en-suite bathroom with a bathtub and a large walk-in closet ensures a comfortable stay.

The upper level of the home provides private accommodations featuring a sitting lounge, guest bedroom, and junior primary suite. The junior primary suite features an elegant oasis with the serenity of a fireplace and the comforts of a walk-in closet and en-suite bathroom. Offering an enjoyable stay, the guest bedroom also offers a walk-in closet and en-suite bathroom.



GUEST BATHROOM



LOWER LEVEL LIVING AREA





GUEST BEDROOM



BUNK BEDS



OUTDOOR HOT TUB

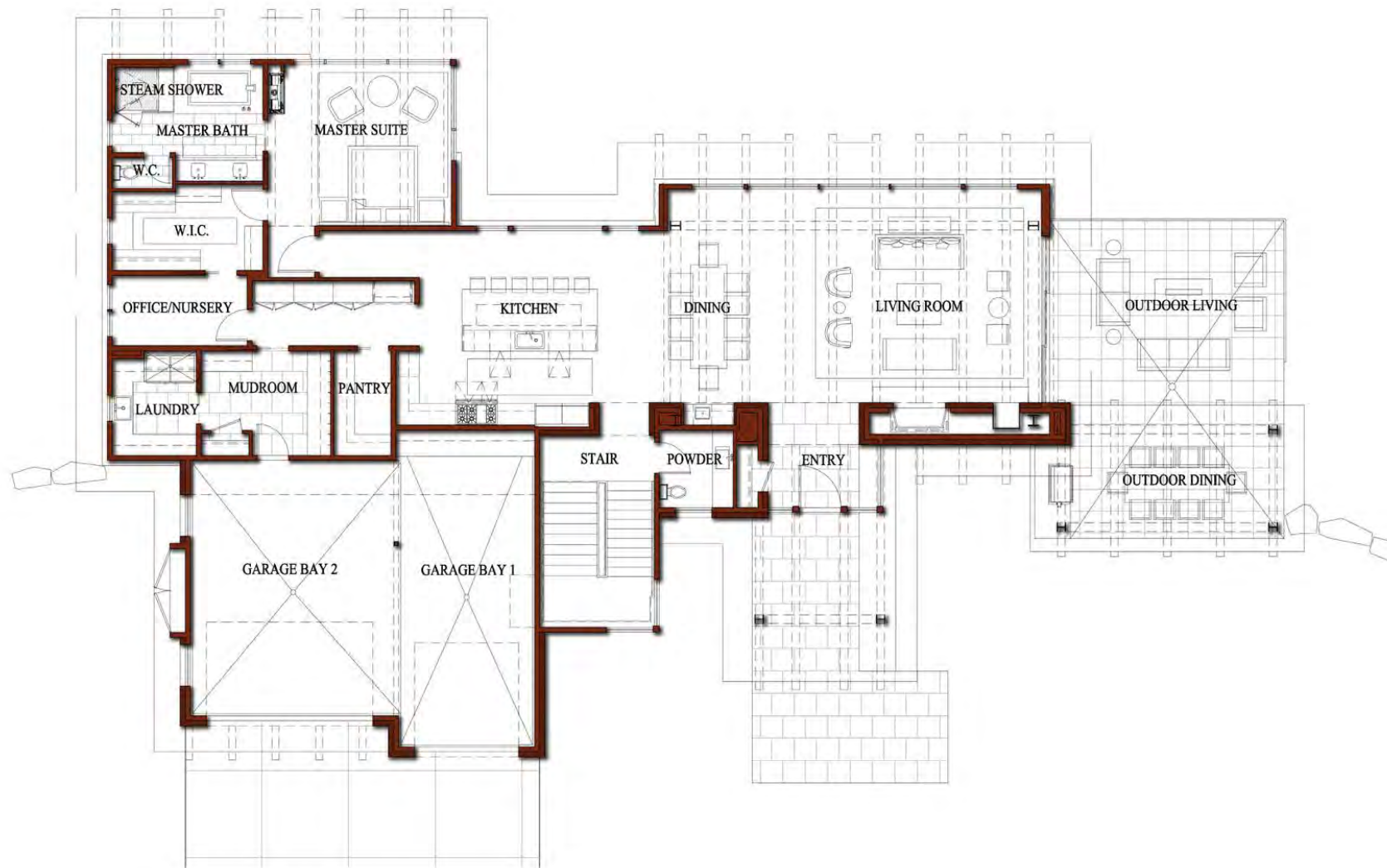


# Alpine Greens 722

7,389 total heated livable square footage

## Main Level

- ◆ Great Room
- ◆ Kitchen
- ◆ Dining Room
- ◆ Mudroom
- ◆ Laundry Room
- ◆ Office/Nursery
- ◆ Master Bedroom Suite
- ◆ Outdoor Terrace with Living and Dining Areas





# Alpine Greens 722

7,389 total heated livable square footage

## Upper Level

- ♦ Junior Master Suite
- ♦ Guest Suite
- ♦ Sitting Room



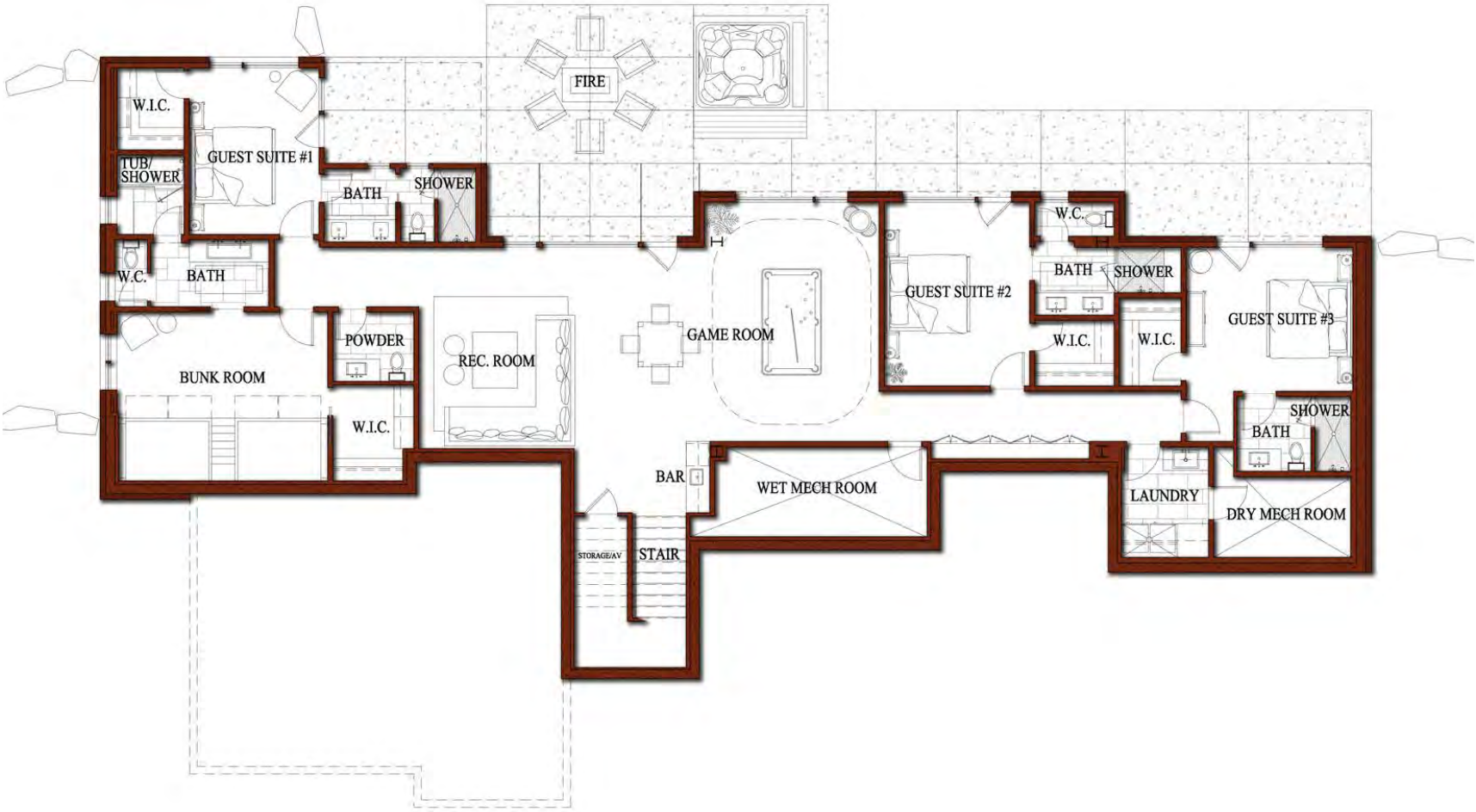


# Alpine Greens 722

7,389 total heated livable square footage

## Lower Level

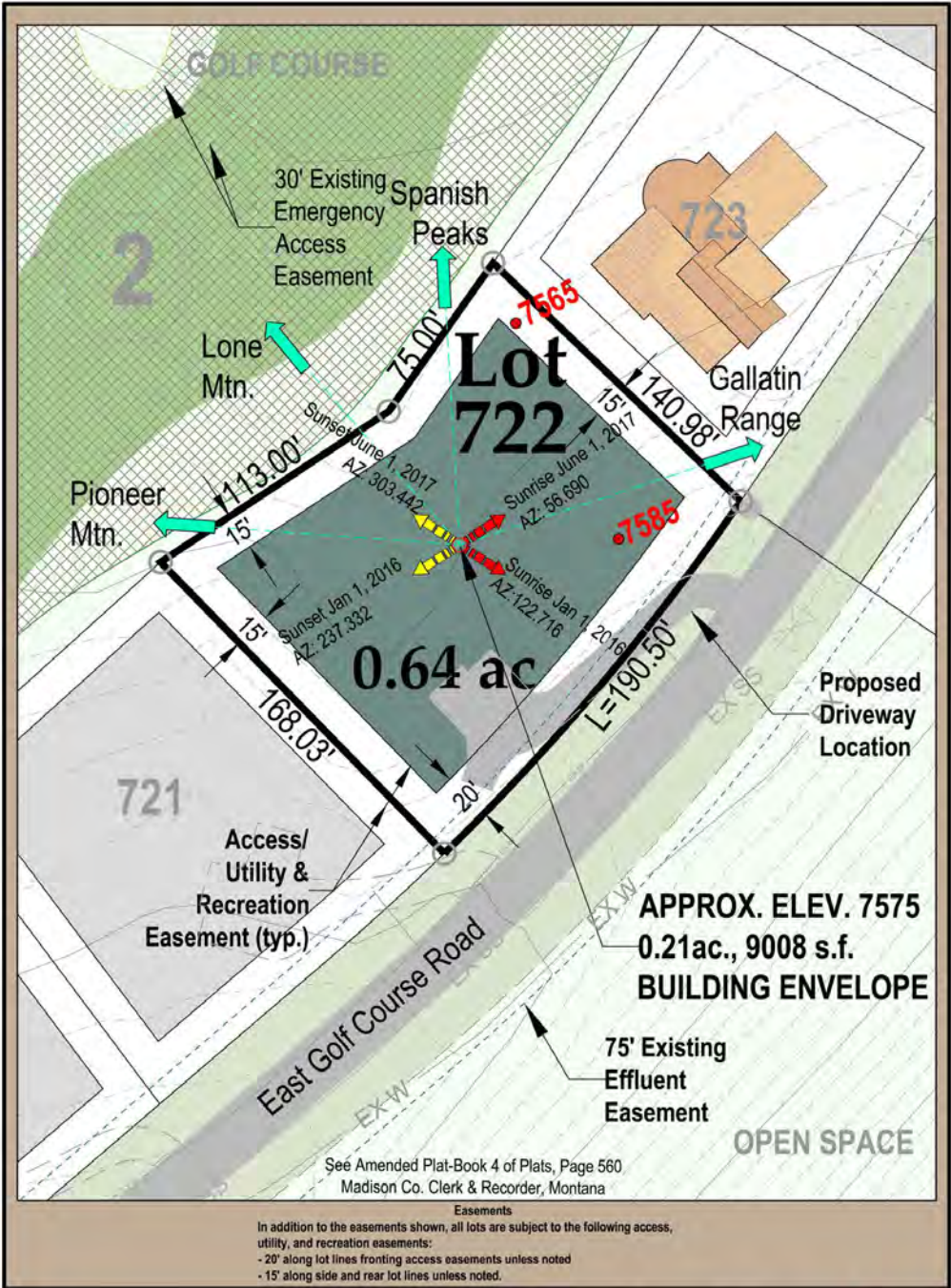
- ◆ Guest Suites
- ◆ Bunk Room Suite
- ◆ Rec Room
- ◆ Wet Bar
- ◆ Game Room
- ◆ Laundry Room
- ◆ Fitness Center
- ◆ Outdoor Terrace with Fire Pit and Hot Tub





# Alpine Greens 722

## Lot Map







DINING ROOM



OPEN LIVING SPACE





*The allure of this exclusive retreat will forever capture the hearts of Members and their loved ones.*





MASTER SUITE



MASTER SUITE BATHROOM





MASTER SUITE TUB





LOWER LEVEL LIVING ROOM



GAME ROOM



FITNESS CENTER



WET BAR







*The Alpine Greens neighborhood offers a warm welcome to those seeking a luxurious retreat amidst breathtaking natural beauty.*



















TERRACE



HOT TUB AND FIRE PIT









**YELLOWSTONE CLUB®**

For more information about this property and its pricing please contact YC Realty.

(888) 700-7748 ♦ (406) 995-4900 ♦ [ycsales@yellowstoneclub.com](mailto:ycsales@yellowstoneclub.com)  
P.O. Box 161097 ♦ Big Sky, Montana 59716

[www.yellowstoneclub.com](http://www.yellowstoneclub.com)

All information deemed reliable, but not guaranteed. All acreages and square footages are estimates. The purchase of a home or homesite does not include membership in Yellowstone Club, or any right to use the private club facilities. Ownership of a home/homesite includes an obligation to pay assessments to a property owner's association. Please ask a sales associate for details. Photographs are representational of the approximate view corridors from the home. Livable square footages listed in this marketing piece are based upon the calculation of only the heated and livable areas within the exterior walls of the property and said square footages are deemed reliable, but not guaranteed. All acreages and square footages are estimates and are provided by the Seller or his designated representative; these measurements should not be a substitute for one's own evaluation and investigation. Ski accessibility is a relative term and can have different implications and meanings depending on the individual. One should investigate fully the property as it relates to its potential ski access and determine for themselves the degree of ski access the property might have or be developed. Buyer acknowledges and agrees that neither the Seller, the Broker, the Sales Associate nor any other real estate representative of the Yellowstone Club or its related affiliates have made any warranties or representations upon which Buyer has relied concerning the ski-in ski-out accessibility of the property. The determination of the level of ski access that a property might have will be the Buyers sole determination.