



Golf Clubhouse Suite #2

LIVING ROOM

2 ——— YELLOWSTONE CLUB ♦ Golf Clubhouse Suite #2





FLOOR TO CEILING WINDOWS



FOYER



BAR SEATING



KITCHEN WITH AMPLE STORAGE SPACE




Golf Clubhouse Suite #2

The Golf Course Clubhouse, nestled against the 18th green, is a remarkable example of mountain architecture. It is both spacious and modern while remaining informed by the vernacular of mountain living, complete with abundant stone and timber detailing throughout. Along with offering an ideal base for golf outings, the Clubhouse features six one-bedroom suites. These suites offer ease of living, convenient rental opportunities, and, of course, the stunning setting of the Club's southern edge. The unique layout of all six suites allows each unit to capture maximum views.

Suite 2, perched on the southwest edge of the building, gracefully juts out to frame views of Lone Peak, Buck Ridge, and Clubhouse Pond. The glass-railing patio is thoughtfully designed so as to let in ground to sky views—practically floating in the landscape. This preference for views is echoed throughout the interior of Suite 2, with oversized windows on every possible wall. This suite features one bedroom, one full bathroom, living room, and kitchen. The L-shaped kitchen maximizes space and maintains an open flow.

The furnishings feel both clean and luxuriant, with pieces that are perfectly scaled for the space. In the bedroom, enjoy large windows looking over the lake. The adjacent bathroom includes a steam shower, soaking tub, and dual sinks. Throughout the unit, the design is classically-hued, with warm wood and light whites. The lofted ceilings, heavy beams, and wood accents throughout evoke the feel of Montana forests. Western-inspired contemporary art gives an upbeat, elegant finish to the residence. This suite is accessed via an art-lined private hallway, which helps to guarantee privacy and quiet, with the convenience of a full restaurant mere steps away at the Clubhouse.

In addition to the numerous golf course and Clubhouse amenities within easy walking distance, this unit also enjoys easy access to the Village area of the Club: skiing, fine dining, youth and adult recreation, retail opportunities and more are all just a short drive away.

 **896 square feet**
 **1 bath**
 **1 bed**

- ◆ Bathroom features steam shower, soaking tub
- ◆ Mountain contemporary finishes throughout
- ◆ Views of Lone Peak and Spanish Peaks
- ◆ Lofted ceilings, timbered beams, custom trim and cabinets
- ◆ Each suite must be placed in the rental program, which is currently administered by Yellowstone Mountain Club

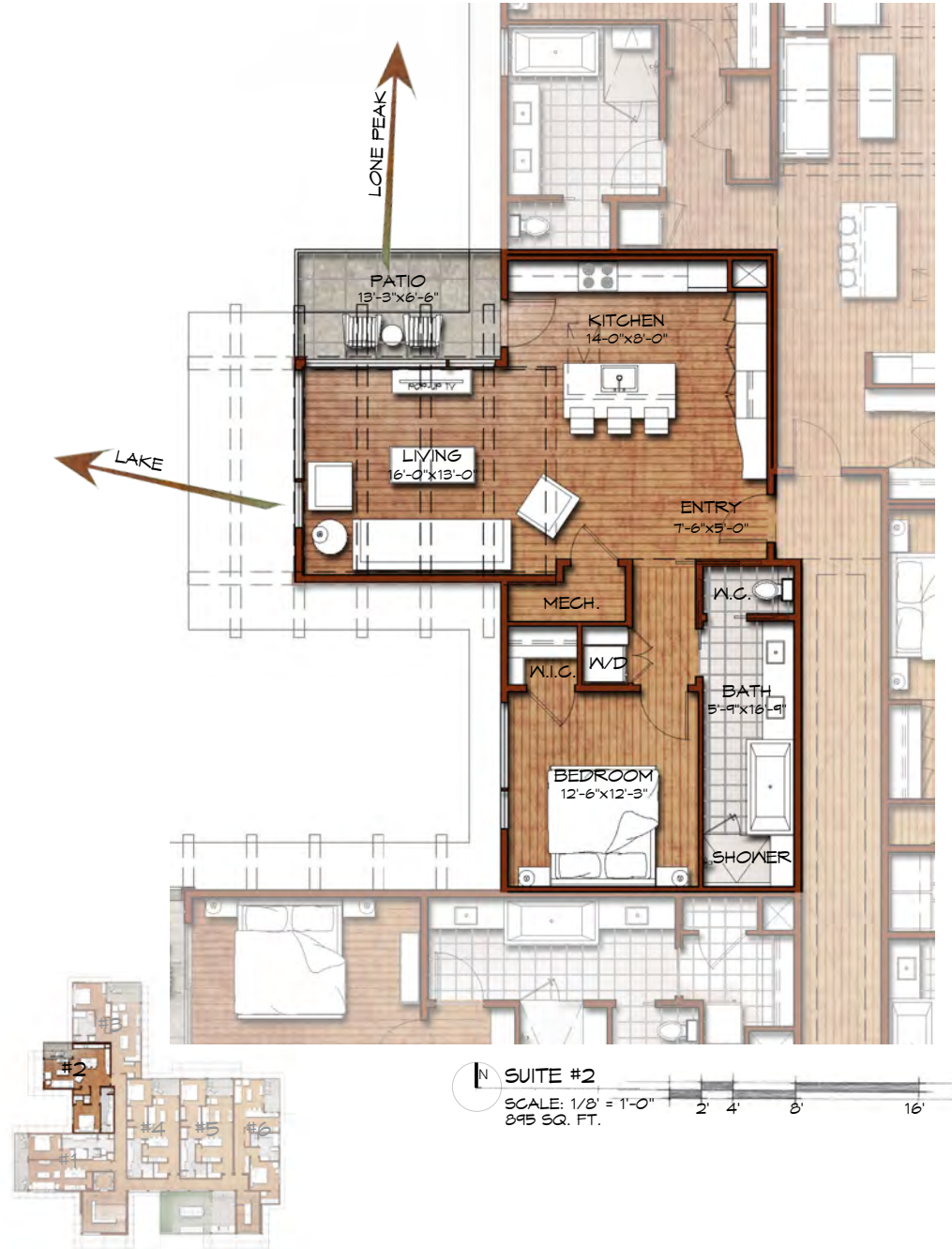
This residence is located within Yellowstone Club, a 15,200 acre private, gated community located in Big Sky, Montana. Yellowstone Club is the world's only private ski and golf community, encompassing thousands of acres of private skiing along with a championship golf course designed by Tom Weiskopf. Additionally, whether looking to savor spectacular mountain panoramas, explore the vast wilderness or enjoy high-quality amenities, Yellowstone Club offers everything from fly fishing, hiking and biking trails to fine dining and spa services. Professional SnowSports, golf and outdoor recreation programs, along with dedicated children's activities, round out the unique Montana experience that is Yellowstone Club.

Golf Clubhouse Suite #2

896 total heated livable square footage

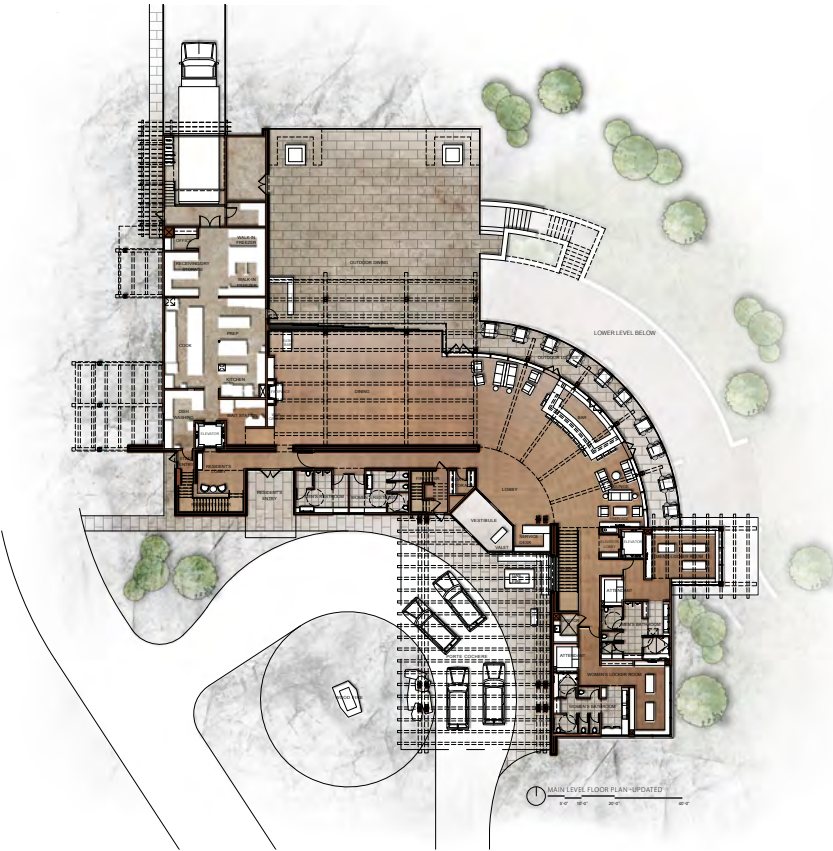
Main Level

- ◆ Entry
- ◆ Kitchen
- ◆ Living Room
- ◆ Bedroom
- ◆ Bathroom
- ◆ Patio
- ◆ Mechanical Room

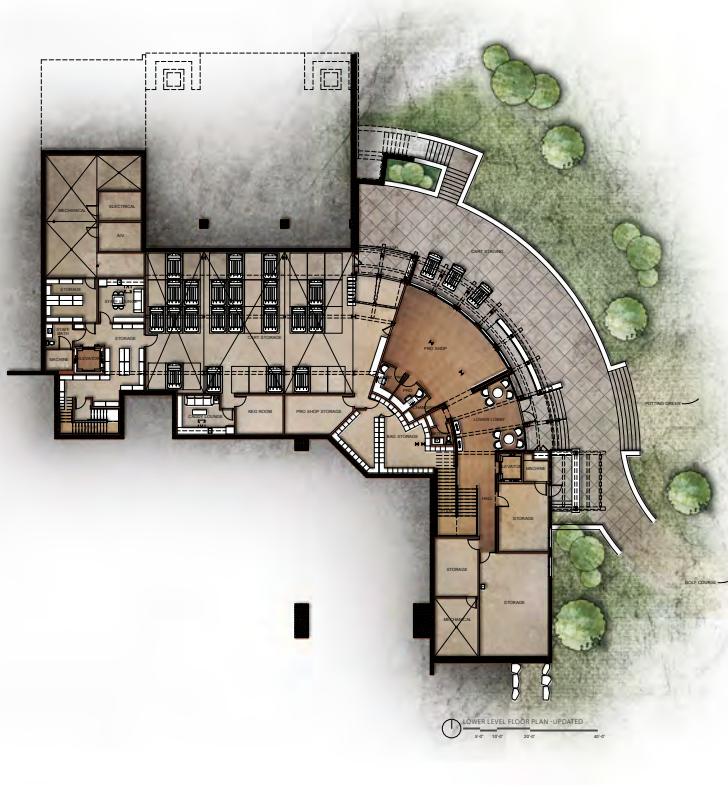


Golf Clubhouse Suite #2

Clubhouse Main Level



Clubhouse Lower Level







Suite 2 feels both clean and luxuriant, with Western-inspired contemporary art throughout bringing an upbeat, elegant finish to the residence.



MASTER SUITE BEDROOM

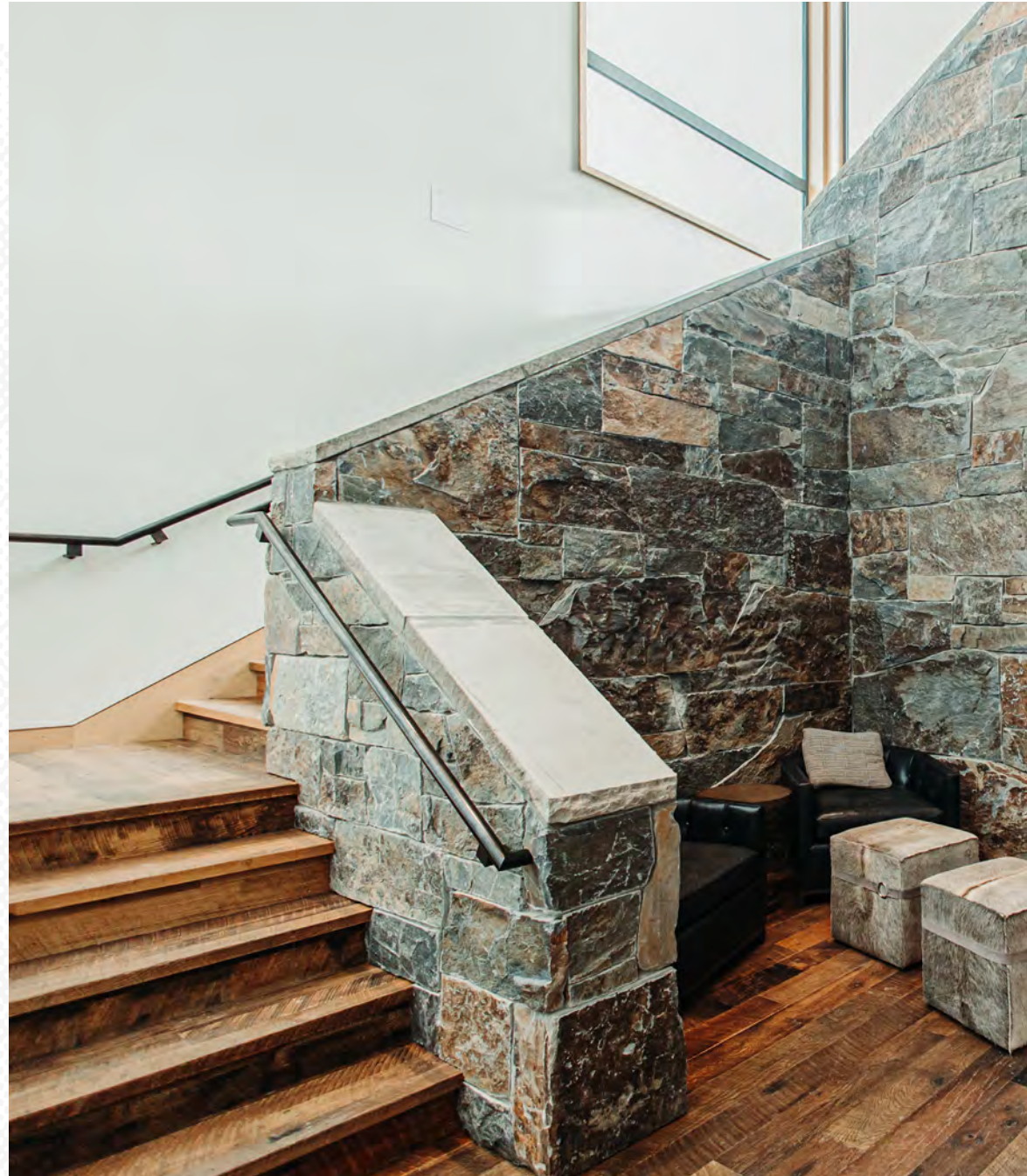


MASTER SUITE BATHROOM

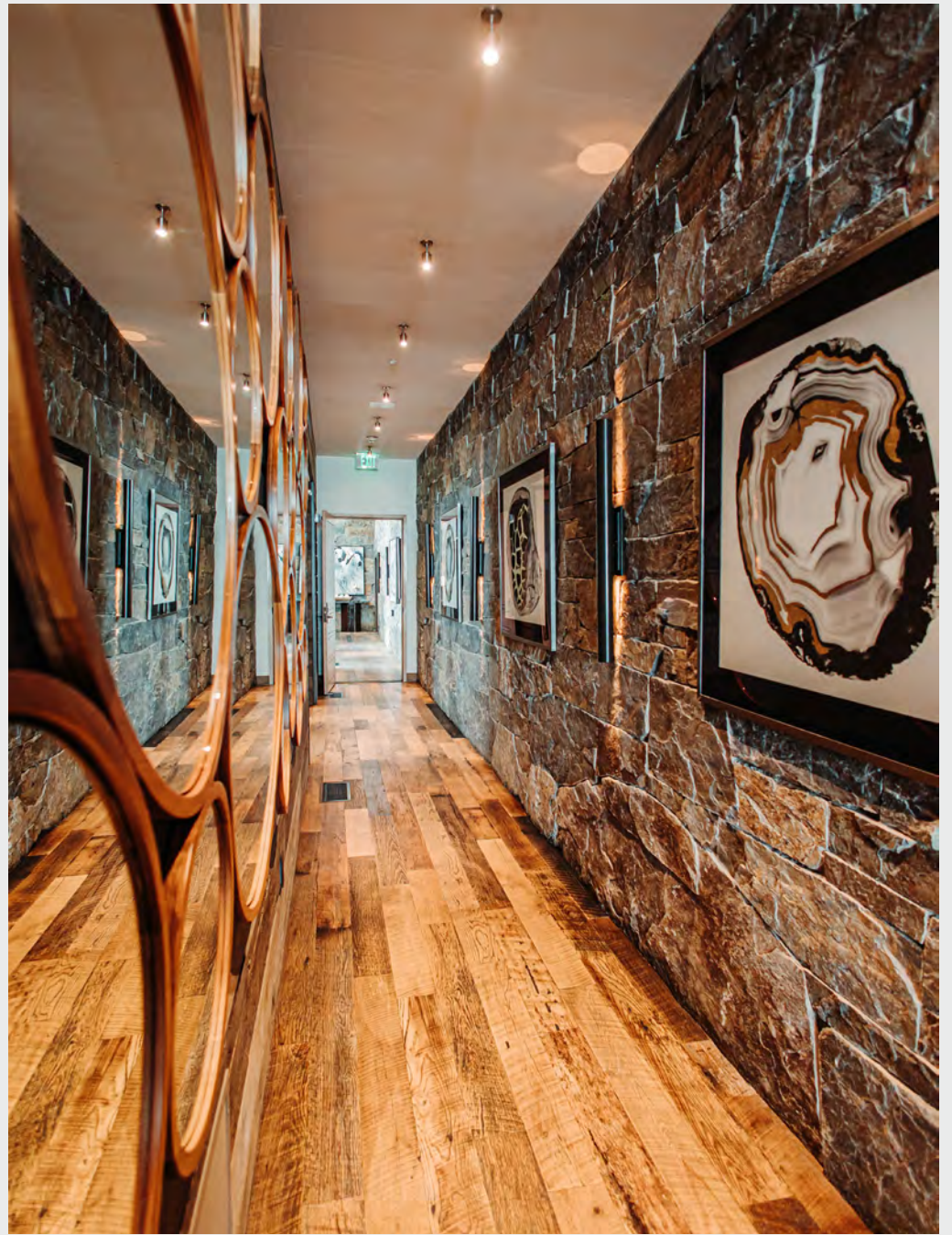


MASTER SUITE SOAKING TUB

“*The Golf Course Clubhouse is both spacious and modern, with abundant stone and timber detailing throughout.*”



CLUBHOUSE SUITES LOBBY



CLUBHOUSE SUITES HALLWAY



PATIO WITH VIEWS OF LONE PEAK AND CLUBHOUSE POND





YELLOWSTONE CLUB®

For more information about this property and its pricing please contact YC Realty.

(888) 700-7748 ♦ (406) 995-4900 ♦ ycsales@yellowstoneclub.com

P.O. Box 161097 ♦ Big Sky, Montana 59716

www.yellowstoneclub.com

All information deemed reliable, but not guaranteed. All acreages and square footages are estimates. The purchase of a home or homesite does not include membership in Yellowstone Club, or any right to use the private club facilities. Ownership of a home/homesite includes an obligation to pay assessments to a property owner's association. Please ask a sales associate for details. Photographs are representational of the approximate view corridors from the home. Livable square footages listed in this marketing piece are based upon the calculation of only the heated and livable areas within the exterior walls of the property and said square footages are deemed reliable, but not guaranteed. All acreages and square footages are estimates and are provided by the Seller or his designated representative; these measurements should not be a substitute for one's own evaluation and investigation. Ski accessibility is a relative term and can have different implications and meanings depending on the individual. One should investigate fully the property as it relates to its potential ski access and determine for themselves the degree of ski access the property might have or be developed. Buyer acknowledges and agrees that neither the Seller, the Broker, the Sales Associate nor any other real estate representative of the Yellowstone Club or its related affiliates have made any warranties or representations upon which Buyer has relied concerning the ski-in ski-out accessibility of the property. The determination of the level of ski access that a property might have will be the Buyers sole determination.