



Warren Miller Lodge 208

LIVING ROOM

2 ——— YELLOWSTONE CLUB ——— WARREN MILLER LODGE 208





LIVING ROOM



LIVING ROOM, KITCHEN, AND FOYER



KITCHEN



CUSTOM WOOD CABINETRY



Warren Miller Lodge 208

Located at the vibrant heart of Yellowstone Club, Warren Miller Lodge boasts an impressive 130,000 square foot facility that features multiple dining outlets and amenities, as well as two floors of luxury condos. Owners of these condos enjoy access to an array of concierge services, including two day lockers in a dedicated owners' locker room. Walking distance to the Village Core offers close connection to a lively social scene. Proximity to world-class amenities and thrilling adventure combines the best of elevated mountain living, cultivating a coveted lifestyle for those who call this exclusive community home. Mirroring the timeless mountain design of the Lodge, Warren Miller Lodge 208 welcomes Owners to a peaceful retreat thoughtfully designed blending rustic elegance with modern sophistication.

Ideal for family getaways, an open-concept floor plan encourages socialization and intimate connection with loved ones. The warmth of a fireplace fills the main living space, where a lounge features a comfortable haven on cold snowy nights. Glass doors open to a terrace, where fresh alpine air invigorates the senses, setting the perfect tone to start the day. A seamless appearance in the kitchen offers a sleek appearance while an island with countertop seating features an elegant setting to serve appetizers during gatherings. A dining table set against the windows offers a formal setting with an impressive backdrop to host dinner parties.

The primary suite features a haven of relaxation where a private terrace provides a quiet place to enjoy an inspiring cup of morning coffee. Perfect for preparing for the day, luxurious accommodations are enhanced with ample closet storage and an en-suite bathroom. A guest bedroom features a comfortable stay, complete with closet storage and a private en-suite bathroom, ensuring a warm and welcoming experience.

Immediate access to high end amenities, world-class skiing and golf, Warren Miller Lodge 208 is home to a peaceful retreat in the heart of Yellowstone Club. With the majesty of the Rocky Mountains as a backdrop for the daily adventure, memories made here are certain to span generations.

🏠 1,592 sq ft

🛀 2 bath

🛏 2 bed

- ♦ 2 terraces
- ♦ Slopeside views
- ♦ Ski-in/ski out via Lodge Lift and Base area
- ♦ Two ski lockers in Warren Miller Lodge's dedicated owner's locker rooms

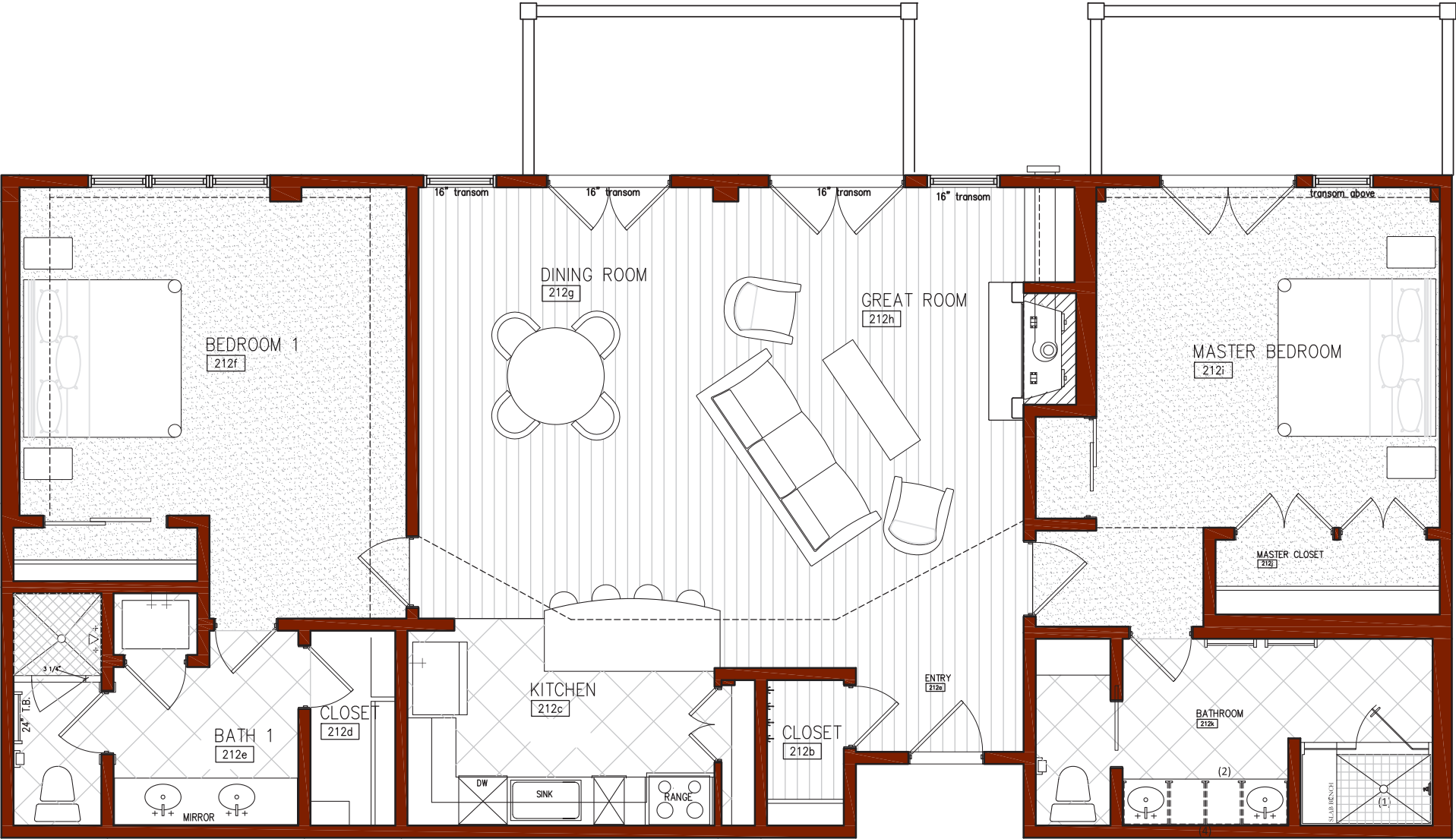
This residence is located within Yellowstone Club, a 15,200 acre private, gated community located in Big Sky, Montana. Yellowstone Club is the world's only private ski and golf community, encompassing thousands of acres of private skiing along with a championship golf course designed by Tom Weiskopf. Additionally, whether looking to savor spectacular mountain panoramas, explore the vast wilderness or enjoy high-quality amenities, Yellowstone Club offers everything from fly fishing, hiking and biking trails to fine dining and spa services. Professional SnowSports, golf and outdoor recreation programs, along with dedicated children's activities, round out the unique Montana experience that is Yellowstone Club.

Warren Miller Lodge 208

1,592 total heated livable square footage

Condo Details

- ♦ Master Bedroom Suite with Balcony
- ♦ Guest Bedroom Suite
- ♦ Primary Balcony
- ♦ Great Room
- ♦ Dining Room
- ♦ Kitchen
- ♦ Entry Closet



Warren Miller Lodge 208





ADDITIONAL BAR SEATING



BALCONY



*Yes, there's no place
like Montana, the
Big Sky country, my
home. A place to set
my spirit free, a Rocky
Mountain melody.*

— LeGrande Harvey
“Montana Melody”



MASTER SUITE



MASTER SUITE BATHROOM



MASTER SUITE BATHROOM



BALCONY VIEWS OF LONE PEAK AND LODGE LIFT



GUEST BEDROOM



GUEST BEDROOM



GUEST BATHROOM



GUEST BATHROOM

*At the heart of the
Yellowstone Club,
the Warren Miller
Lodge bestows
a warm welcome
to all who enter
through its doors.*



WARREN MILLER LODGE



DINING ROOM



YELLOWSTONE CLUB®

For more information about this property and its pricing please contact YC Realty.

(888) 700-7748 ♦ (406) 995-4900 ♦ ycsales@yellowstoneclub.com
P.O. Box 161097 ♦ Big Sky, Montana 59716

www.yellowstoneclub.com

All information deemed reliable, but not guaranteed. All acreages and square footages are estimates. The purchase of a home or homesite does not include membership in Yellowstone Club, or any right to use the private club facilities. Ownership of a home/homesite includes an obligation to pay assessments to a property owner's association. Please ask a sales associate for details. Photographs are representational of the approximate view corridors from the home. Livable square footages listed in this marketing piece are based upon the calculation of only the heated and livable areas within the exterior walls of the property and said square footages are deemed reliable, but not guaranteed. All acreages and square footages are estimates and are provided by the Seller or his designated representative; these measurements should not be a substitute for one's own evaluation and investigation. Ski accessibility is a relative term and can have different implications and meanings depending on the individual. One should investigate fully the property as it relates to its potential ski access and determine for themselves the degree of ski access the property might have or be developed. Buyer acknowledges and agrees that neither the Seller, the Broker, the Sales Associate nor any other real estate representative of the Yellowstone Club or its related affiliates have made any warranties or representations upon which Buyer has relied concerning the ski-in ski-out accessibility of the property. The determination of the level of ski access that a property might have will be the Buyers sole determination.