



Village 2-402

Village Core

OPEN LIVING SPACE

2 — YELLOWSTONE CLUB ♦ Village 2-402





LONE PEAK VIEWS



LIVING ROOM



KITCHEN



ADDITIONAL BAR SEATING



Village 2-402

The vibrant heart of the Yellowstone Club, the Village Core Condos welcome Members to an unparalleled getaway combining luxury and adventure. Curating an array of personalized experiences, the dedicated team at the Condominium Association ensures each day is maximized to its fullest potential. An elevated alpine lifestyle provides effortless access to ski lifts, the Tom Weiskopf golf course, and high-end amenities, allowing each season to present endless opportunities to make timeless memories with loved ones. Thoughtfully designed to allow the grandeur of the outdoors to be the focal point of the condo, simplicity of modern interiors at Village 2-402 enhance the sense of tranquility and comfort. Maximizing a life spent among the outdoors, multiple expansive terraces blur the boundaries between indoor and outdoor spaces where a harmonious blend of nature and luxury enhances a calm atmosphere.

Sleek and refined, and open concept floor plan encourages socializing for both intimate gatherings and larger social events. A fireplace in the living room warms the space, as glass walls fill the lounge with an abundance of natural light. A terrace opens the room to the outdoors, offering striking vistas of Lone Peak. Modern and clean, the kitchen features state-of-the-art appliances and an island with countertop seating, providing a comfortable spot for guests to enjoy appetizers while hosting. Offering a formal setting for dinner parties, a dining table with panoramic vistas enhance unforgettable meals together. Ideal for movie nights, a media room features a quiet space to enjoy an immersive cinematic experience. Doors open to a terrace, perfect for marveling at the glittering night sky. A powder bathroom and a laundry room provide guest convenience to stay fresh and tidy throughout the daily adventure.

 **4,730 square feet**
 **4.5 bath**
 **5 bed**

♦ Multiple terraces

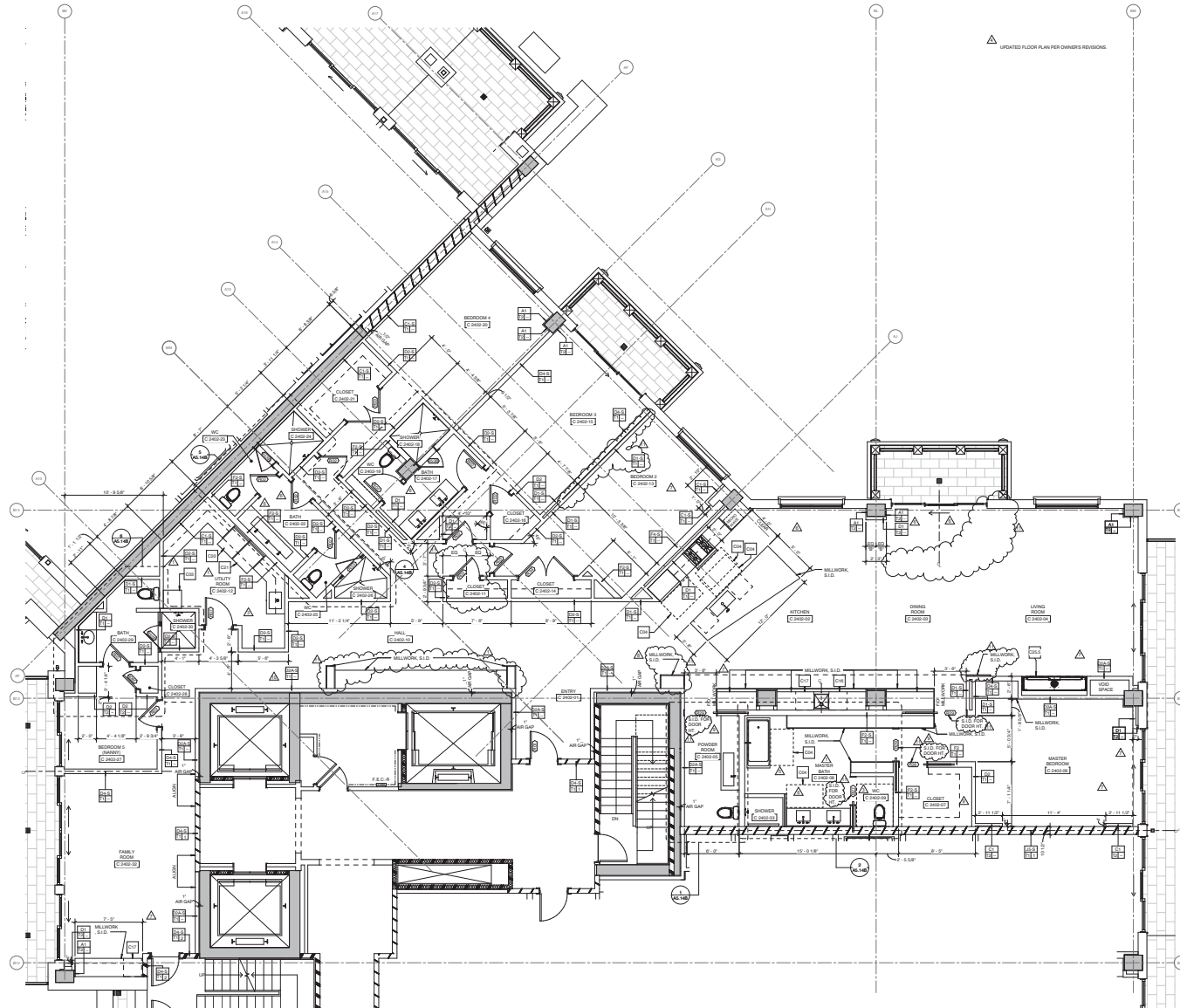
This residence is located within Yellowstone Club, a 15,200 acre private, gated community located in Big Sky, Montana. Yellowstone Club is the world's only private ski and golf community, encompassing thousands of acres of private skiing along with a championship golf course designed by Tom Weiskopf. Additionally, whether looking to savor spectacular mountain panoramas, explore the vast wilderness or enjoy high-quality amenities, Yellowstone Club offers everything from fly fishing, hiking and biking trails to fine dining and spa services. Professional SnowSports, golf and outdoor recreation programs, along with dedicated children's activities, round out the unique Montana experience that is Yellowstone Club.

Village 2-402

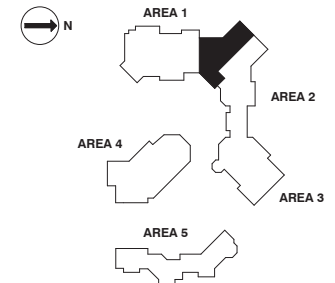
4,730 total heated livable square footage

Condo Details

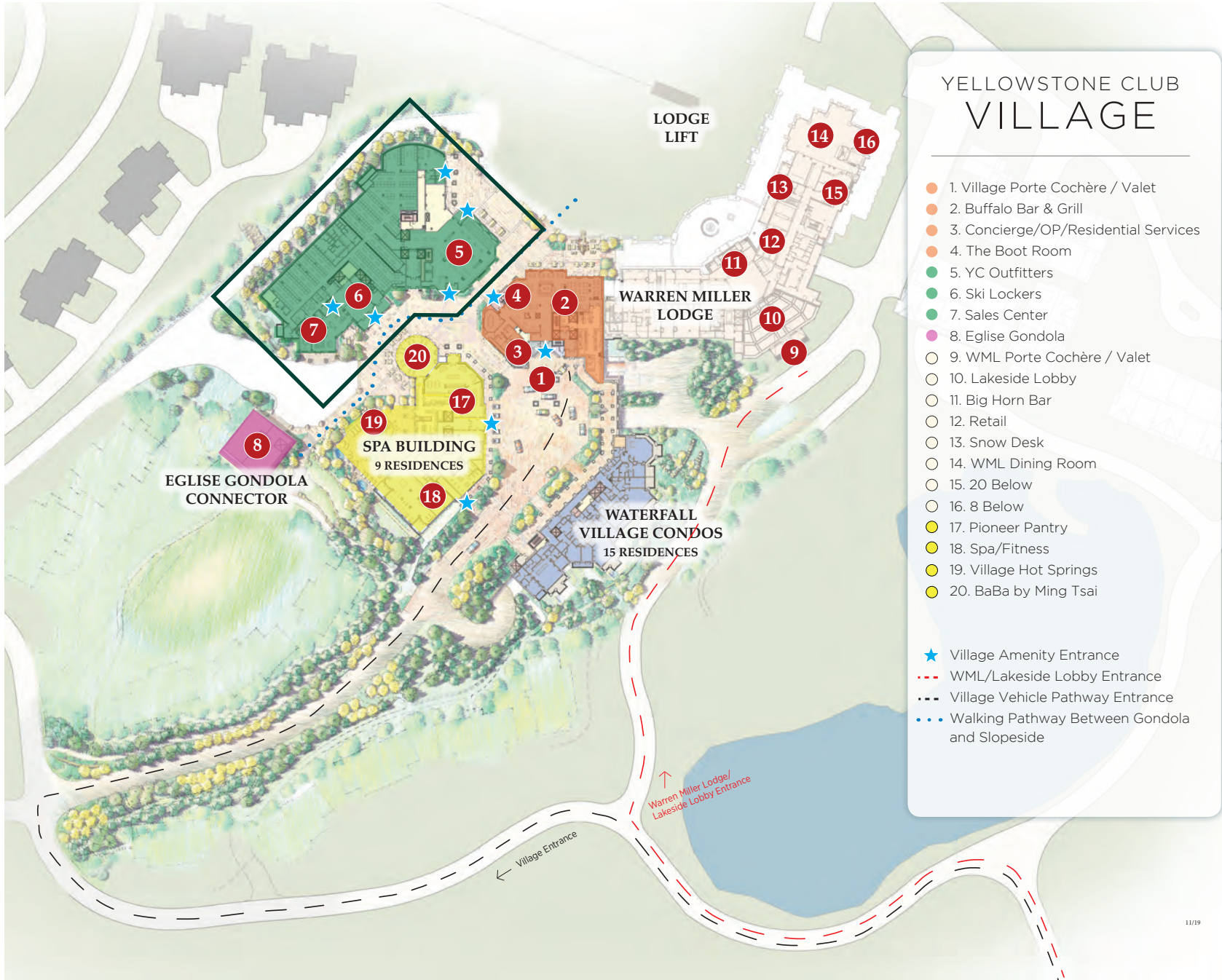
- ◆ Master Bedroom Suite with Balcony
- ◆ Guest Bedroom Suites
- ◆ Primary Balcony
- ◆ Living Room
- ◆ Dining Room
- ◆ Kitchen
- ◆ Family Room
- ◆ Laundry Room
- ◆ Bunkroom
- ◆ Wet Bar
- ◆ Utility Room



CONDO KEY PLAN



Village 2-402





WET BAR



KITCHEN AND DINING ROOM



*A tranquil sanctuary
for relaxation and
restoration after a
day spent enjoying
the Rocky Mountain
wonderland.*

Village 2-402

The primary suite boasts a tranquil sanctuary for relaxation and restoration after a day spent enjoying the Rocky Mountain wonderland. Sliding glass doors open to a terrace, filling the suite with fresh alpine air to start the day. A spacious walk-in closet and en-suite bathroom with a soaking tub offer the ultimate in luxurious comforts. Ideal for getaways with friends and family, guest accommodations include two bunk rooms and two guest bedrooms. Each bunk room features two sets of bunks, each with a twin bed above a full bed, each providing room to sleep up to six guests. Across the hall, a bathroom with two water closets and two shower rooms provides guests space and privacy to prepare for the day. A guest bedroom with a walk-in closet, en-suite bathroom, and private terrace access offers a peaceful haven to unwind and enjoy breathtaking views. Another guest bedroom features space for a twin bed, an en-suite bathroom, and terrace access.

Village Condo 2-402 features an iconic retreat where memories made with loved ones span generations. With unmatched access to thrilling adventure and comforts of luxurious amenities, Members can indulge in a life well lived.



MASTER SUITE



MASTER SUITE BATHROOM



GUEST BEDROOM WITH BALCONY



GUEST BEDROOM



GUEST BATHROOM



BUNK ROOM



BUNK ROOM BATHROOM



LAUNDRY ROOM



FAMILY ROOM



STAFF QUARTERS BEDROOM



STAFF QUARTERS BATHROOM



“An iconic retreat
where memories
made with
loved ones span
generations”







WET BAR



ENTRY HALLWAY





YELLOWSTONE CLUB®

For more information about this property and its pricing please contact YC Realty.

(888) 700-7748 ♦ (406) 995-4900 ♦ ycsales@yellowstoneclub.com
P.O. Box 161097 ♦ Big Sky, Montana 59716

www.yellowstoneclub.com

All information deemed reliable, but not guaranteed. All acreages and square footages are estimates. The purchase of a home or homesite does not include membership in Yellowstone Club, or any right to use the private club facilities. Ownership of a home/homesite includes an obligation to pay assessments to a property owner's association. Please ask a sales associate for details. Photographs are representational of the approximate view corridors from the home. Livable square footages listed in this marketing piece are based upon the calculation of only the heated and livable areas within the exterior walls of the property and said square footages are deemed reliable, but not guaranteed. All acreages and square footages are estimates and are provided by the Seller or his designated representative; these measurements should not be a substitute for one's own evaluation and investigation. Ski accessibility is a relative term and can have different implications and meanings depending on the individual. One should investigate fully the property as it relates to its potential ski access and determine for themselves the degree of ski access the property might have or be developed. Buyer acknowledges and agrees that neither the Seller, the Broker, the Sales Associate nor any other real estate representative of the Yellowstone Club or its related affiliates have made any warranties or representations upon which Buyer has relied concerning the ski-in ski-out accessibility of the property. The determination of the level of ski access that a property might have will be the Buyers sole determination.