



Pine Ridge 424 - Sky Run

42 Foxtail Pine Road

GREAT ROOM

2 | YELLOWSTONE CLUB ♦ Pine Ridge 424





FLOOR TO CEILING WINDOWS



CUSTOM TIMBER CEILINGS



KITCHEN



ADDITIONAL BAR SEATING



Pine Ridge 424 - Sky Run

Nestled in the upper reaches of the Yellowstone Club, the Big Sky Ridge neighborhood offers an unparalleled alpine retreat. This ski-in, ski-out community blends thrilling adventure with high-end amenities, where seclusion among pines and sweeping vistas enhance mountain living.

At 42 Foxtail Pine Road, the aptly named Sky Run embraces its natural surroundings with a rugged timber-and-stone exterior. Inside, soaring ceilings and expansive glass walls foster a deep connection to the outdoors, with every bedroom offering direct access to fresh Montana air. A private ski trail links the home to Yellowstone Club's trail system, while Big Sky lifts are accessible from the dedicated ski locker porch. A frosted glass door etched with Lone Peak welcomes you into the main living space, where natural light floods through panoramic windows. The great room's wood-burning fireplace creates a cozy retreat, while the kitchen—featuring state-of-the-art appliances, a custom pantry, and multiple dining areas—balances casual comfort with refined entertaining. The four-seasons room, a gem of the home, integrates indoor and outdoor living with accordion glass doors, a swimming spa, fireplace, and dining area for year-round enjoyment. The primary suite offers a tranquil escape with a fireplace, spa-inspired en-suite, and private terrace with breathtaking views. A dedicated dog room, washing station, and fenced play area make this home a dream for pet lovers.

On the lower level, the ski room provides direct slope access, while a fitness room, laundry, and guest suites offer convenience and comfort. The upper level blends recreation with relaxation, featuring a billiards room, theater, and a bunk room that sleeps six. Additional guest suites include private terraces, en-suite baths, and serene views.

The upper level of the home combines leisure activity with comfortable accommodations, providing an unparalleled retreat for both residents and guests. A billiards room with a kitchenette overlooks the great room, where an elevated perch still feels connected to the main living space below. Sliding barn doors open to the theater room, where computer gaming stations feature multi-purpose enjoyment.

Thoughtfully designed to maintain a connection to the majesty of the Montana wilderness, expansive glass walls and natural elements allow the outdoors feel ever present throughout each corner of the home. Offering enjoyment throughout each changing season, Sky Run is an idyllic retreat to make cherished memories with loved ones.

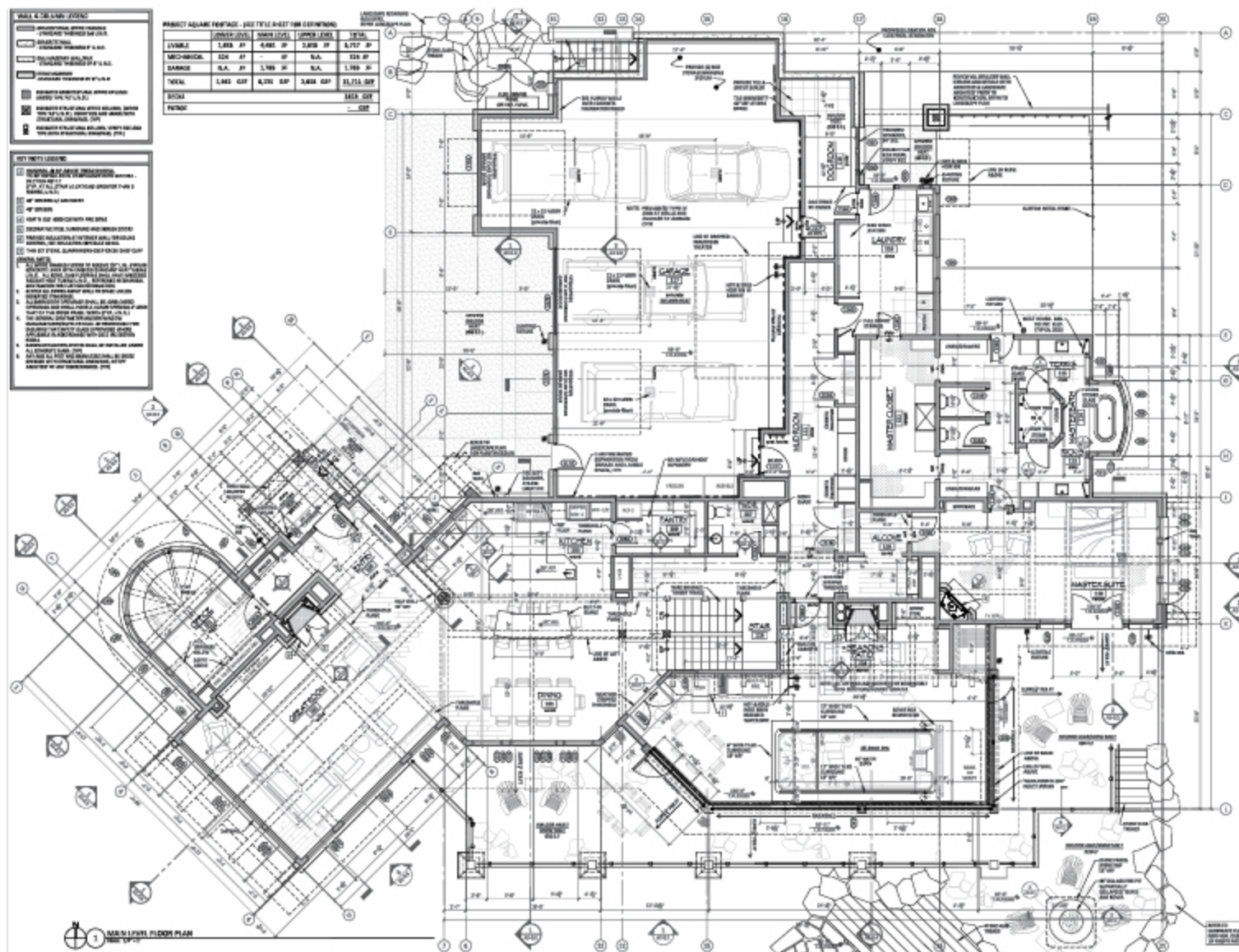
🏠 8,707 square feet
🛀 8 bath
🛏 6 bed

- ✦ 3.29 acre lot
- ✦ 8,707 sq. ft.
- ✦ 5 bedrooms + 1 bunk room
- ✦ 5 bathrooms + 3 powder rooms
- ✦ 3-car garage
- ✦ 4-season spa room
- ✦ Ski-in ski-out access
- ✦ Panoramic vistas of Pioneer, Andesite, Cedar, and Lone Peak

This residence is located within Yellowstone Club, a 15,200 acre private, gated community located in Big Sky, Montana. Yellowstone Club is the world's only private ski and golf community, encompassing thousands of acres of private skiing along with a championship golf course designed by Tom Weiskopf. Additionally, whether looking to savor spectacular mountain panoramas, explore the vast wilderness or enjoy high-quality amenities, Yellowstone Club offers everything from fly fishing, hiking and biking trails to fine dining and spa services. Professional SnowSports, golf and outdoor recreation programs, along with dedicated children's activities, round out the unique Montana experience that is Yellowstone Club.

8,707 total heated livable square footage

- ◆ Great Room
- ◆ Kitchen
- ◆ Lounge
- ◆ Dining Room
- ◆ Four Seasons Room with Swimming Spa, Fireplace, and Barbecue
- ◆ Laundry Room with Dog Washing Station
- ◆ Master Suite with Deck Access
- ◆ Office
- ◆ Deck
- ◆ Mud Room

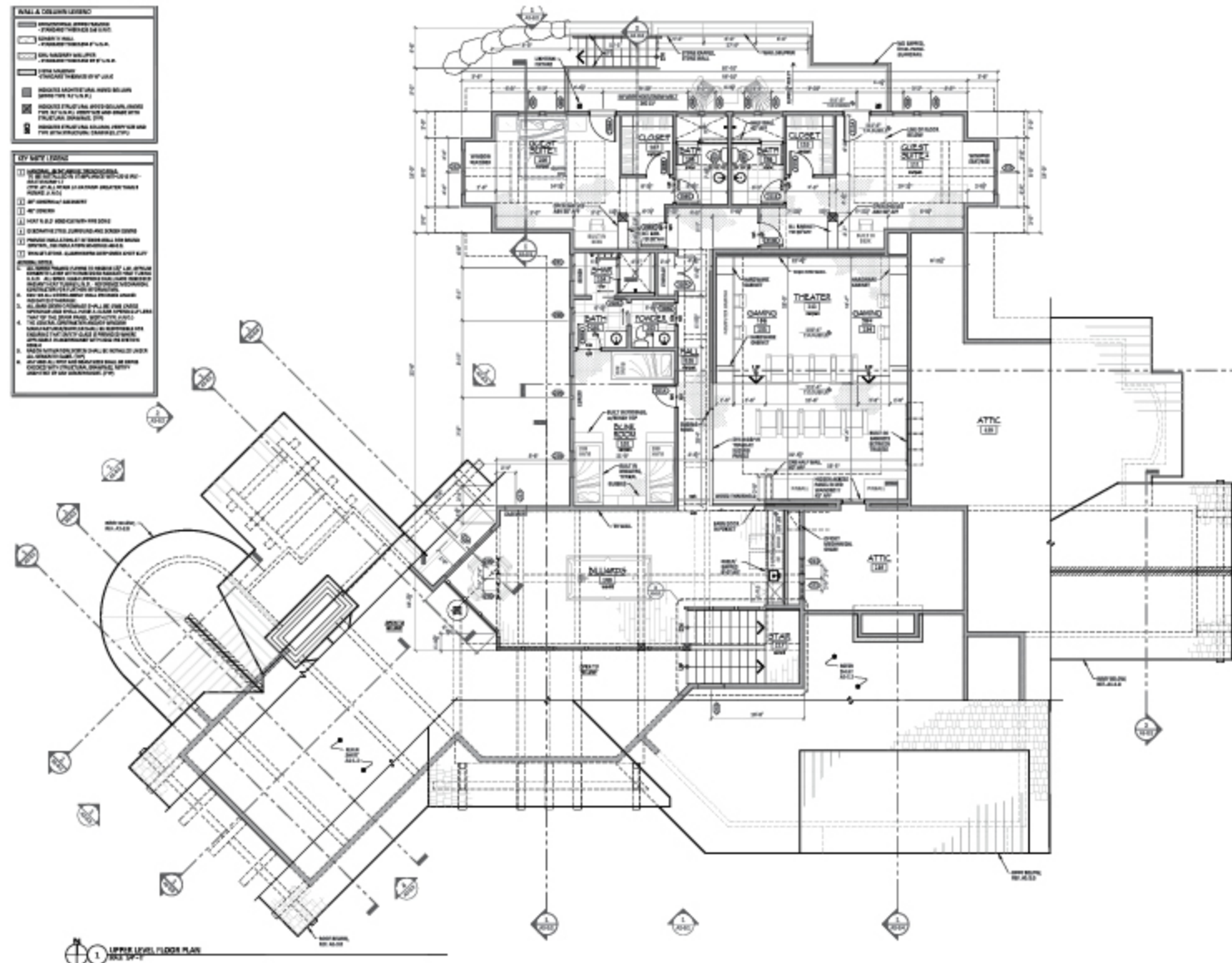


8,707 total heated livable square footage

- Billiards Room with Kitchenette

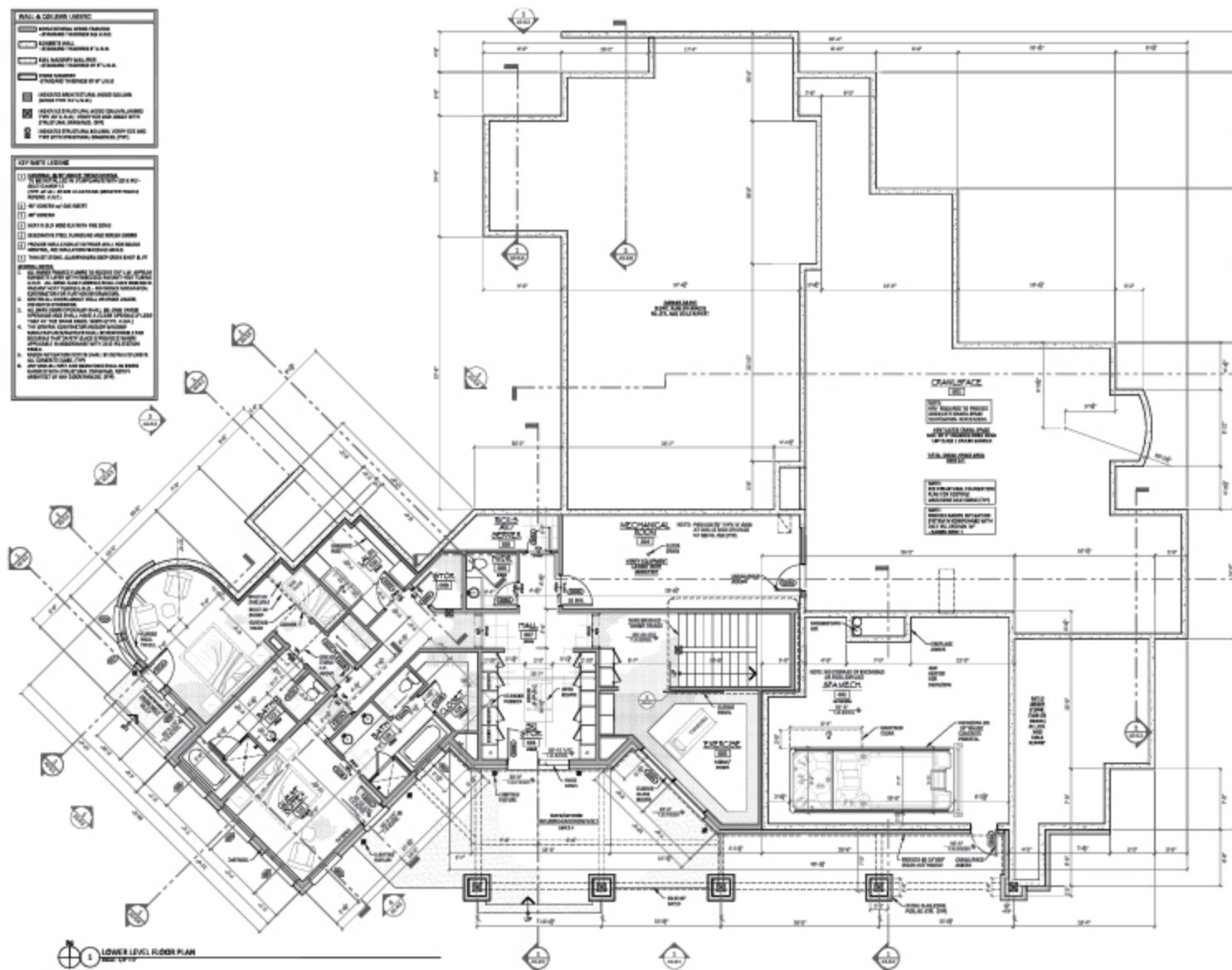
- ◆ Guest Suites with Terrace

- ◆ Theater Room
- ◆ Bunk Room

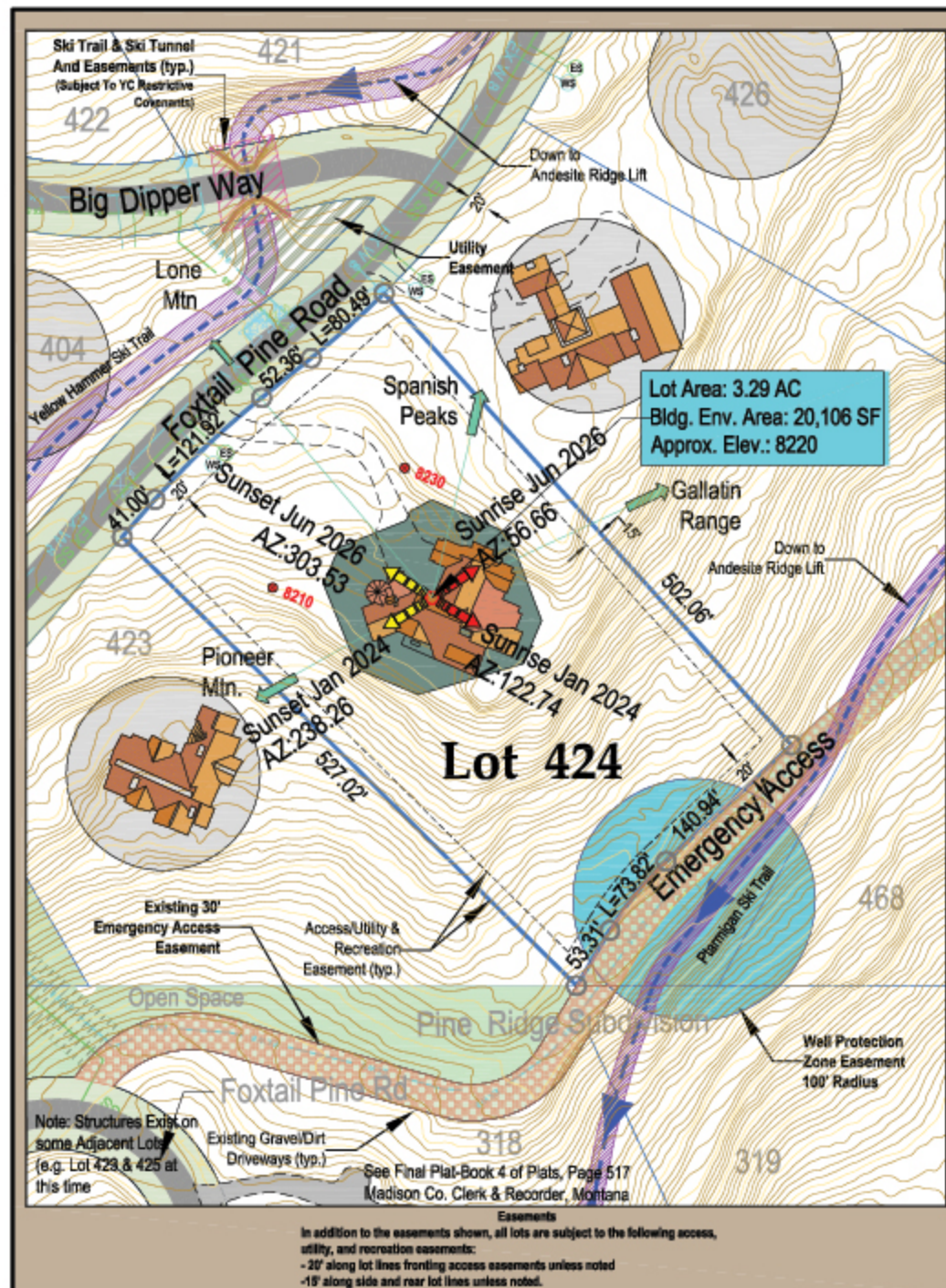


8,707 total heated livable square footage

- ◆ Fitness Room



Lot Map





DINING ROOM



OPEN LIVING SPACE



Sky Run is a gateway to elevated mountain living, where the thrill of the slopes meets the comforts of high-end Club amenities.



MASTER SUITE



MASTER SUITE BATHROOM



MASTER SUITE TUB WITH MOUNTAIN VIEWS



GUEST BEDROOM



GUEST BATHROOM



MUDROOM WITH DOG WASHING STATION



BILLIARDS ROOM



THEATER WITH GAMING STATIONS



BUNK ROOM



BUNK ROOM BATHROOM



STUDY



SKI LOCKER ROOM

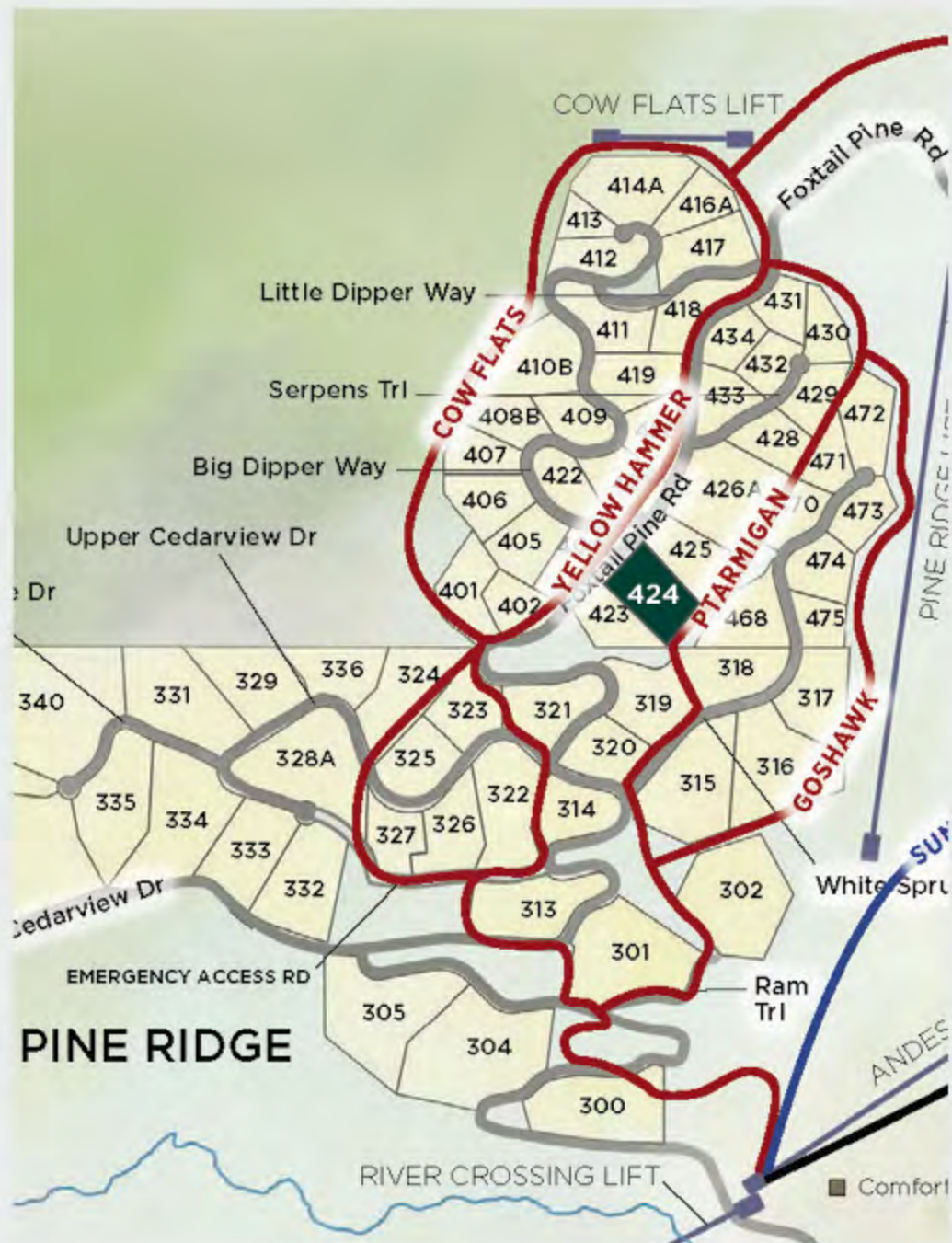
FOUR SEASONS ROOM

Pine Ridge #21 ♦ YELLOWSTONE CLUB ♦ 1



Sky Run is thoughtfully designed to maintain a connection to the majesty of the Montana wilderness.











FOUR SEASONS ROOM WITH BARBECUE, SWIMMING SPA,
AND FIREPLACE



OUTDOOR PATIO





YELLOWSTONE CLUB®

For more information about this property and its pricing please contact YC Realty.

(888) 700-7748 ♦ (406) 995-4900 ♦ yccsales@yellowstoneclub.com

P.O. Box 161097 ♦ Big Sky, Montana 59716

www.yellowstoneclub.com

All information deemed reliable, but not guaranteed. All acreages and square footages are estimates. The purchase of a home or homesite does not include membership in Yellowstone Club, or any right to use the private club facilities. Ownership of a home/homesite includes an obligation to pay assessments to a property owner's association. Please ask a sales associate for details. Photographs are representational of the approximate view corridors from the home. Livable square footages listed in this marketing piece are based upon the calculation of only the heated and livable areas within the exterior walls of the property and said square footages are deemed reliable, but not guaranteed. All acreages and square footages are estimates and are provided by the Seller or his designated representative; these measurements should not be a substitute for one's own evaluation and investigation. Ski accessibility is a relative term and can have different implications and meanings depending on the individual. One should investigate fully the property as it relates to its potential ski access and determine for themselves the degree of ski access the property might have or be developed. Buyer acknowledges and agrees that neither the Seller, the Broker, the Sales Associate nor any other real estate representative of the Yellowstone Club or its related affiliates have made any warranties or representations upon which Buyer has relied concerning the ski-in ski-out accessibility of the property. The determination of the level of ski access that a property might have will be the Buyer's sole determination.