

Pine Ridge 304

153 Moose Lake Rd



GREAT ROOM



KITCHEN AND DINING ROOM

Pine Ridge 304

Main Home

Upon entering the main house, soaring cathedral ceilings and expansive windows frame breathtaking mountain views. A traditional, closed-concept floor plan ensures each space serves its function while maintaining privacy. The great room's wood-burning fireplace crackles with warmth, offering a cozy retreat on snowy nights. Doors open to a terrace with a firepit, barbecue, and dining lounge, while stone steps lead down to the hot tub and pool, creating an ideal setting for year-round relaxation. The state-of-the-art kitchen elevates the culinary experience with high-end appliances, a breakfast nook, and a formal dining room. A family room with built-in bookshelves and a fireplace provides a quiet retreat for reading or unwinding.

The junior primary suite features a wood-burning fireplace, a private terrace, and an en-suite featuring a walk-in closet and spa-like shower with a built-in bench. Cottage charm fills a guest bedroom, offering an en-suite bath and walk-in closet, while another guest room provides a family-friendly stay with twin timber post beds, a spacious walk-in closet, and a private bath. A timber staircase leads to a lofted lounge, a delightful hideaway for guests of all ages.

On the lower level, a private den offers a quiet retreat, while the rec room invites entertainment. A gym with a sauna provides a dedicated wellness space. The lower terrace, complete with a built-in hot tub, in-ground pool, and chaise lounges, offers the perfect summer sanctuary. The bunk room features built-in timber bunks, sleeping up to five guests, and an en-suite bath. The ski mudroom, outfitted with lockers, a laundry room, and a powder bath, provides immediate access to the slopes. At the end of the corridor, a theater room with plush armchairs offers an immersive cinematic experience.

The upper level blends luxury and comfort. Vaulted ceilings and expansive windows flood the primary suite with natural light, while a wood-burning fireplace and a daybed nestled along the window showcase stunning mountain vistas. French doors open to a private terrace overlooking Big Sky. The spa-like en-suite, clad in warm timber, features a deep soaking tub, a shower, and dual water closets. A bonus room at the landing provides a peaceful space to study or relax.

Stairs ascend to the lookout tower, an enchanting hideaway warmed by a potbelly stove. Walls of paned windows frame breathtaking 360° mountain views, and doors open to a wraparound terrace, perfect for sunrises, sunset reflections, or stargazing under the glittering Montana sky.

Main Home



11,042 square feet



9 bath



6 bed

- ◆ 8.19 acre lot
- ◆ 5 bedrooms + 1 bunk room
- ◆ 6 bathrooms + 3 powder rooms
- ◆ Hot tub + in-ground pool
- ◆ Outdoor fireplace
- ◆ Lookout tower with terrace
- ◆ Wood-burning fireplaces throughout
- ◆ Private pond
- ◆ Ski-in/ski-out
- ◆ Wine cellar
- ◆ Ski hut
- ◆ Views of Lone Peak, Cedar Mountain, and Pioneer

This residence is located within Yellowstone Club, a 15,200 acre private, gated community located in Big Sky, Montana. Yellowstone Club is the world's only private ski and golf community, encompassing thousands of acres of private skiing along with a championship golf course designed by Tom Weiskopf. Additionally, whether looking to savor spectacular mountain panoramas, explore the vast wilderness or enjoy high-quality amenities, Yellowstone Club offers everything from fly fishing, hiking and biking trails to fine dining and spa services. Professional SnowSports, golf and outdoor recreation programs, along with dedicated children's activities, round out the unique Montana experience that is Yellowstone Club.

4,492 total heated livable square footage

4,492 total heated livable square footage

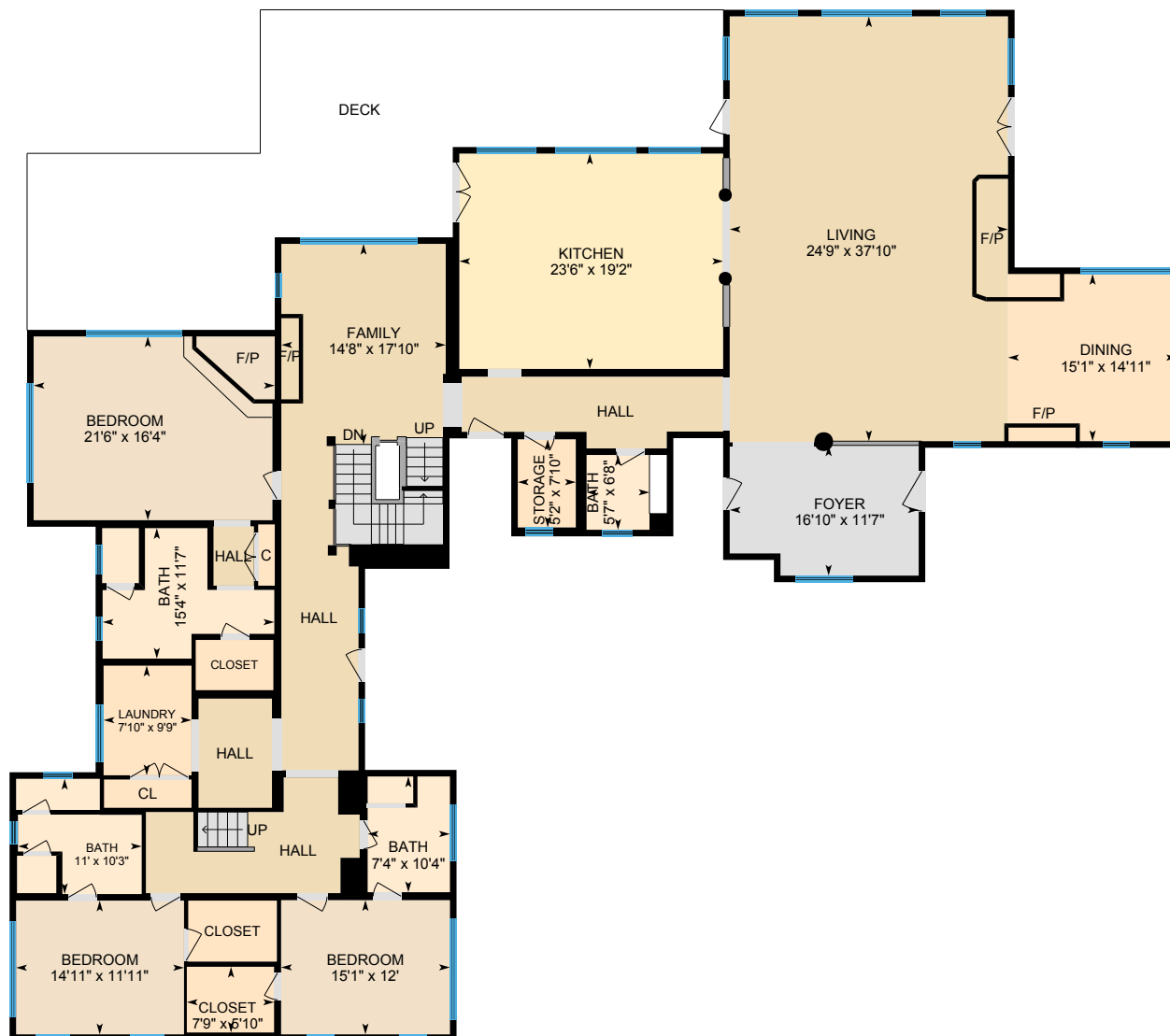
- ◆ Great Room
- ◆ Kitchen
- ◆ Dining Room

- ◆ Great Room
- ◆ Kitchen
- ◆ Dining Room

- ◆ Family Room
- ◆ Junior Primary Suite with Private Terrace
- ◆ Guest Suites

- ◆ Terrace with Firepit, Barbecue and Dining Lounge

- ◆ Laundry Room
- ◆ Mudroom



Pine Ridge 304

4,171 total heated livable square footage

Lower Level

- ◆ Den
- ◆ Rec Room
- ◆ Kitchenette with Wet Bar
- ◆ Theater Room
- ◆ Fitness Center with Sauna
- ◆ Lower Terrace with Hot Tub and Pool
- ◆ Bunk Room Suite
- ◆ Guest Bedroom
- ◆ Mudroom with Ski Storage
- ◆ Laundry Room



Pine Ridge 304

1,460 total heated livable square footage

Upper Level

- ◆ Primary Suite with Private Terrace
- ◆ Lofted Lounge
- ◆ Laundry Room



Pine Ridge 304

462 total heated livable square footage

Lookout

- ◆ Lookout Tower with Potbelly Stove
- ◆ Wrap-Around Terrace
- ◆ 360° Windows







GREAT ROOM



CUSTOM TIMBER THROUGHOUT



GREAT ROOM



SECONDARY DINING ROOM



*This luxurious
generational estate
hosts the idyllic
basecamp to cultivate
cherished memories
with loved ones.*



MASTER SUITE



MASTER SUITE BATHROOM



MASTER SUITE SITTING ROOM



GUEST BEDROOM



GUEST BATHROOM



THEATER ROOM



BUNK ROOM



BUNK ROOM BATHROOM

As thoughtful design mirrors the local landscape, refinement can be found throughout each residence at 153 Moose Lake Road.







FITNESS CENTER



SAUNA



SKI LOCKER ROOM



LOWER LEVEL KITCHEN











*Surrounded by
pristine wilderness,
quiet seclusion
offers unrivaled
tranquility at this
mountain retreat.*



TERRACE



HOT TUB



Pine Ridge 304

Garage and Apartment

Through the wood timbered porte cochère, just beyond two glass-encased mechanical rooms, Owners can enjoy discreet access to a prized gem of the property, the wine cellar. Plaster cove ceiling and brick pavers emulate the nostalgia of an old-world wine room, as a central wooden table features an elegant post for wine tastings.

A four bay garage features incredible storage for outdoor adventure equipment and guest vehicles. A workshop here offers opportunity for gear maintenance and ability to keep day-to-day operations smooth and carefree. Lofted above the garage, a contemporary apartment welcomes guests to a quiet retreat where vaulted ceilings with exposed log beams and wood accents continue the rustic design style. Tucked into the mountain, the apartment juts up to the wooded hillside, where sunlight filters through the dense canopy casting a dappled light into the living space. A fully equipped kitchen as well as a built-in dining nook with banquette seating features a charming space to prepare and enjoy nourishing meals before the daily adventure. Doors open from here to a wrap-around terrace overlooking the rocky landscape just beyond the main house. From the living room, access to this terrace features forest views, ideal for enjoying passing wildlife. A lounge tucked around a television offers entertainment space for enjoying movies or a family game night. Just off the main living space, a bathroom features a large walk-in shower and spacious vanity for guest belongings. Vaulted ceilings in the bedroom draw in light and space, featuring room for two beds to accommodate families or groups.

Garage and Apartment

🏠 **908 square feet**
 🚿 **1 bath**
 🛏 **1 bed**

- ◆ 908 sq ft
- ◆ 4 bay garage with storage
- ◆ Immediate wine cellar access
- ◆ 1 bedroom
- ◆ 1 bathroom
- ◆ Full kitchen
- ◆ Wrap around patio with two egress points



GARAGE

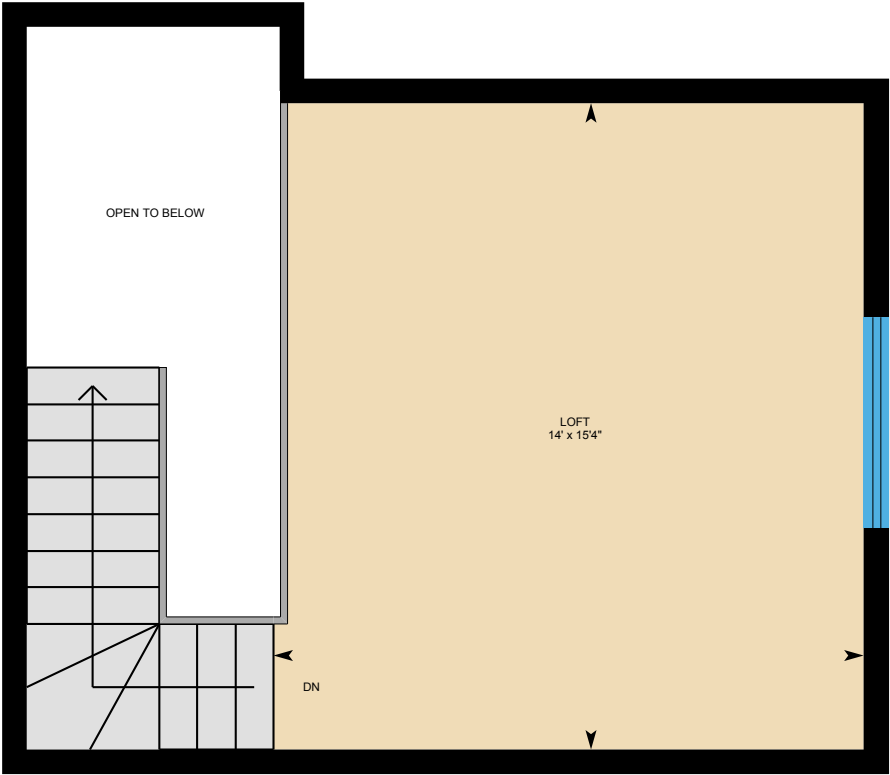


ABOVE-GARAGE APARTMENT

Pine Ridge 304

285 total heated livable square footage

- Loft
- ◆ Loft with Fireplace
 - ◆ Private Terrace



Pine Ridge 304

908 total heated livable square footage

Above Garage Apartment

- ◆ Living Room
- ◆ Dining Nook
- ◆ Bathroom
- ◆ Kitchen
- ◆ Primary Bedroom
- ◆ Wrap-Around Terrace





ABOVE-GARAGE APARTMENT



ABOVE-GARAGE APARTMENT



ABOVE-GARAGE APARTMENT BATHROOM



CABIN EXTERIOR



CABIN KITCHEN AND DINING ROOM






Pine Ridge 304

Cabin

Downhill from the main residence, a winding road travels into the whispering pines towards a secluded guest cabin, where a tranquil pond reflects the surrounding wilderness. Emanating rustic charm with cottage design influence, vaulted ceilings with exposed log beams and posts adorn the open concept living space as paned windows connect the space to the tranquility of nature. A sprawling terrace overlooks the pond and dense pine forest, where the ever-present local flora and fauna delight the daily experience. A wood-burning fireplace fills the cabin with the subtle scent of woodsmoke as dancing flames cast an amber glow across rough-hewn log walls. In the living room, a lounge and dining table provide comfortable places to perch whether enjoying family game night or meals together. Functioning as both utility and art, quaint vintage appliances offer a culinary experience mirroring days gone by, while still elevated by modern convenience. A central island constructed of logs offers storage and countertop seating.

A hallway leads towards two bedrooms, a bathroom, a large storage closet, and a laundry closet. Vaulted ceilings open the primary suite to an abundance of light and space, where a canopy bed provides a cozy stay. French doors open to the terrace overlooking the pond, where reflections of the rising sun offer serenity to the morning coffee. Two sets of built-in timber bunks joined together in the middle by a wooden ladder accommodate four, featuring a family friendly stay in the bunkroom. Set between the bedrooms, a bathroom features a triple faucet farmhouse sink, water closet, and large walk-in shower offering privacy and room for those sharing this space.

Cabin

 **1,497 square feet**
 **1 bath**
 **2 bed**

- ◆ 1,497 sq ft
- ◆ 1 bedrooms + 1 bunk room
- ◆ 1 bathroom
- ◆ Sprawling back terrace overlooking the pond
- ◆ Wood-burning fireplace

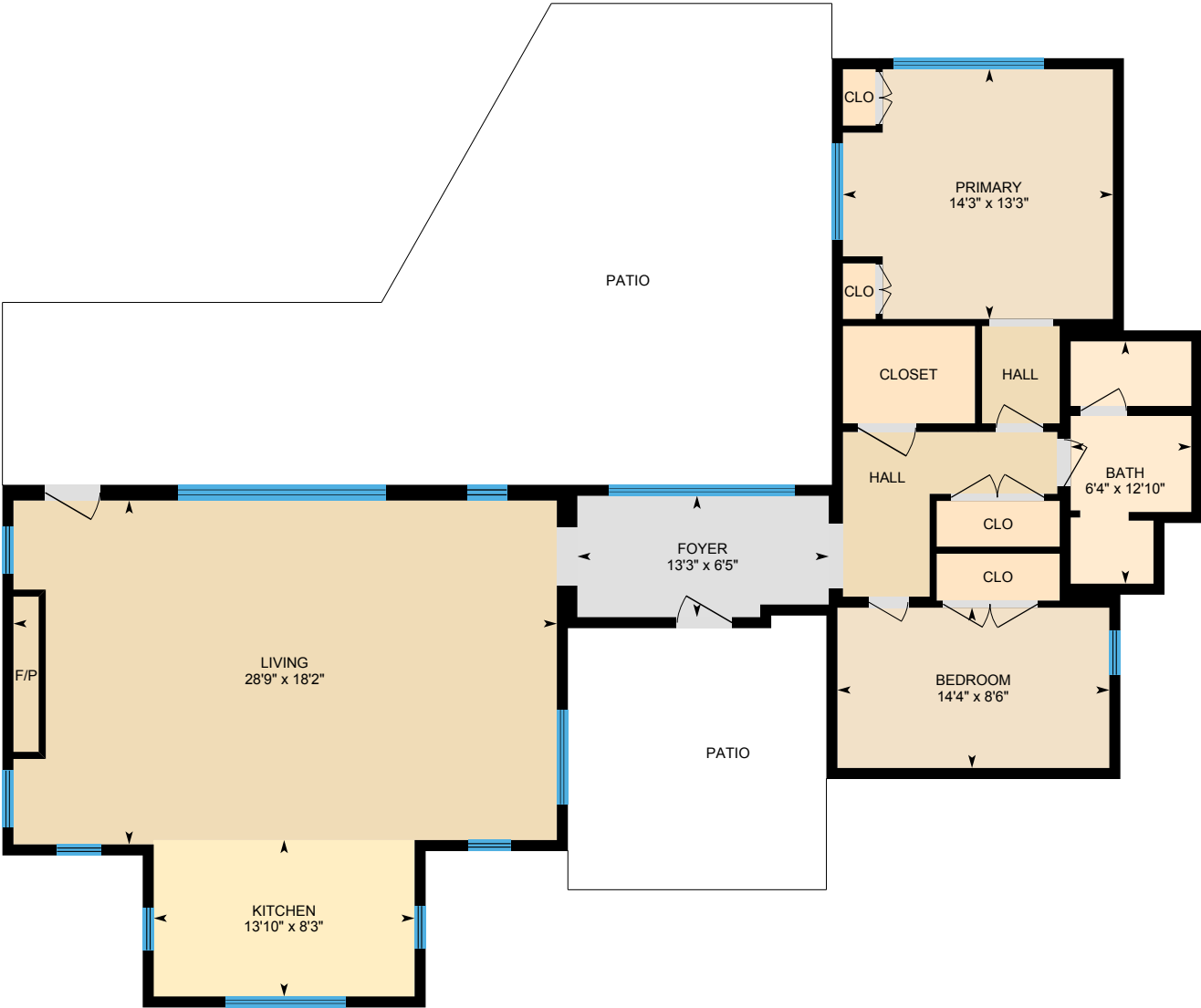


Pine Ridge 304

1,441 total heated livable square footage

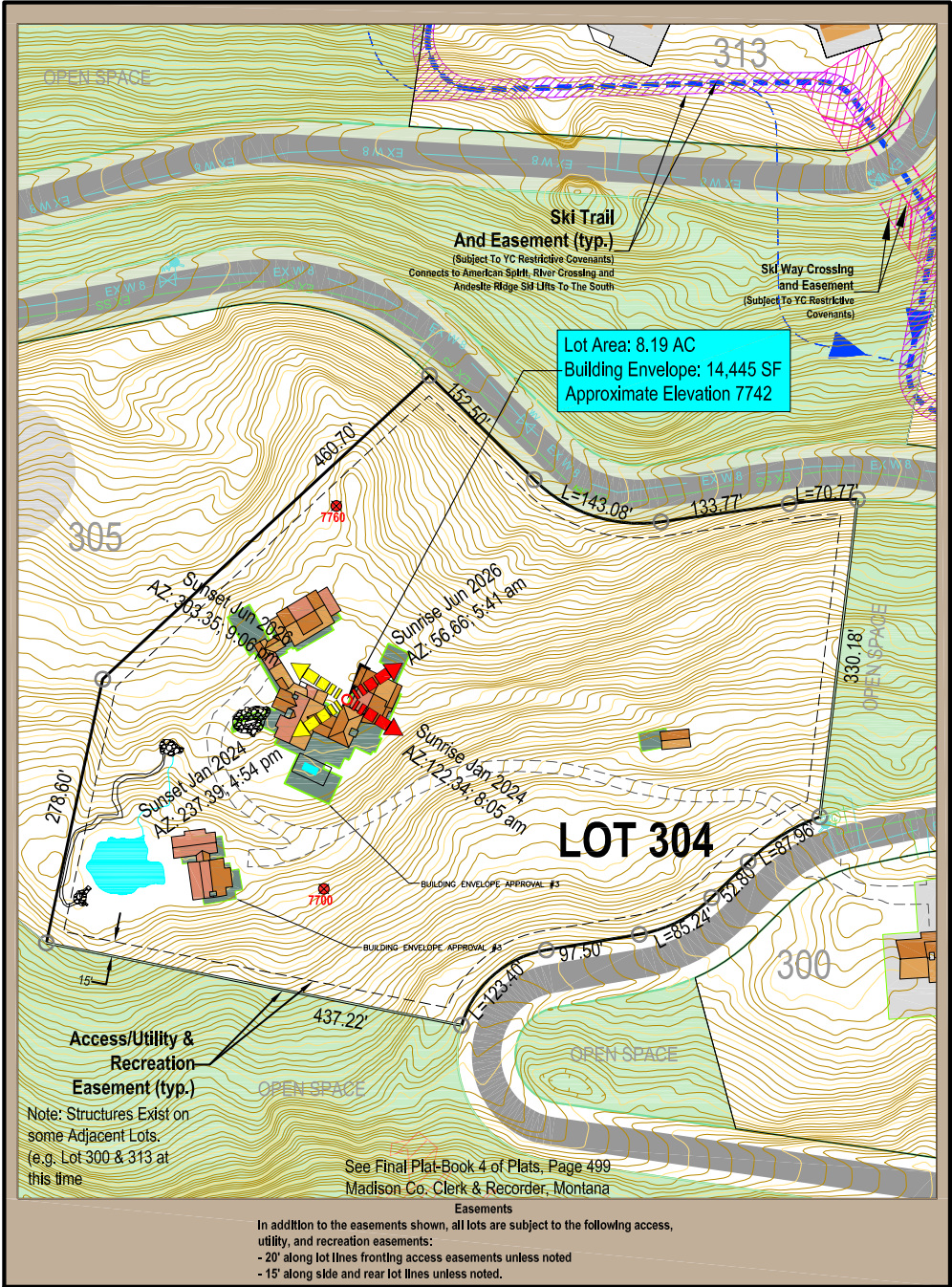
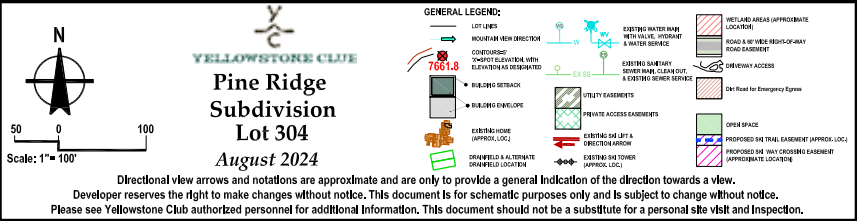
Pond Cabin

- ◆ Primary Bedroom
- ◆ Bunk Room
- ◆ Living Room with Lounge
- ◆ Kitchen
- ◆ Laundry Room
- ◆ Terrace Overlooking Private Pond



Pine Ridge 304

Lot Map







CABIN TERRACE



CABIN LIVING ROOM



CABIN KITCHEN



CABIN PRIMARY BEDROOM



CABIN BUNK ROOM



CABIN BATHROOM



YELLOWSTONE CLUB®

For more information about this property and its pricing please contact YC Realty.

(888) 700-7748 ♦ (406) 995-4900 ♦ yccsales@yellowstoneclub.com
P.O. Box 161097 ♦ Big Sky, Montana 59716

www.yellowstoneclub.com

All information deemed reliable, but not guaranteed. All acreages and square footages are estimates. The purchase of a home or homesite does not include membership in Yellowstone Club, or any right to use the private club facilities. Ownership of a home/homesite includes an obligation to pay assessments to a property owner's association. Please ask a sales associate for details. Photographs are representational of the approximate view corridors from the home. Livable square footages listed in this marketing piece are based upon the calculation of only the heated and livable areas within the exterior walls of the property and said square footages are deemed reliable, but not guaranteed. All acreages and square footages are estimates and are provided by the Seller or his designated representative; these measurements should not be a substitute for one's own evaluation and investigation. Ski accessibility is a relative term and can have different implications and meanings depending on the individual. One should investigate fully the property as it relates to its potential ski access and determine for themselves the degree of ski access the property might have or be developed. Buyer acknowledges and agrees that neither the Seller, the Broker, the Sales Associate nor any other real estate representative of the Yellowstone Club or its related affiliates have made any warranties or representations upon which Buyer has relied concerning the ski-in ski-out accessibility of the property. The determination of the level of ski access that a property might have will be the Buyers sole determination.