



# Andesite Ridge 69A

58 Fossil Road



# GREAT ROOM







HEARTH ROOM



DINING ROOM





KITCHEN



ADDITIONAL BAR SEATING



# Andesite Ridge 69A




It's no secret that the Andesite Ridge neighborhood of the Yellowstone Club features one of the most coveted locations to call home. Weaving through the pines atop Andesite Ridge, Members are welcomed to a tight-knit community of luxury residences where an elevated alpine lifestyle provides the idyllic retreat to make lasting memories with loved ones. The home at 58 Fossil Road offers unmatched access to exhilarating year-round adventure, prominently thousands of acres of Private Powder®, as well as world-class Club amenities. Expansive views of the Tom Weiskopf Golf Course as well as Eglise and Pioneer Mountains reveal a breathtaking landscape where inspiring vistas beckon adventure and nurture wellbeing. Emulating the serenity of the natural world, the home is thoughtfully designed utilizing natural elements, rustic textures, and a neutral palette to enhance well-being. Radiant floor heating throughout each residence adds to the home's modern amenities while ensuring comfort and warmth to create an exquisite haven.

## Main Home




Exposed log trusses and posts lend rustic charm and the sense of enduring strength as architectural design effortlessly blends with the surrounding landscape. Vaulted ceilings in the great room fill the space with an abundance of natural light while the amber glow of a fireplace offers a tranquil ambiance. State-of-the-art appliances in the kitchen provide modern conveniences such as an ice maker and a double oven gas range, while the butler's pantry features a full wine fridge. Ideal for bringing people together, countertop seating offers a comfortable perch for guests to socialize and enjoy appetizers while food is being prepared. Two walls of windows provide a bright atmosphere in the dining room, where a long table hosts a refined setting for meals together. Adjacent to the kitchen, the hearth room centers around a fireplace, where a cozy den with a television offers the perfect setting for movie nights. Connecting to the two-car garage, a mudroom features built-in cubby storage to keep gear organized. A powder bathroom and the primary suite can be accessed down the hall from the great room. The primary suite features vaulted ceilings, the warmth of a fireplace, and French doors that open to a private terrace. An en-suite bathroom offers zen relaxation with a steam shower and soaking tub with a view and a spacious walk-in closet with a washer and dryer.

Featuring additional entertainment space and comfortable accommodations, the lower level offers a versatile retreat for Owners and their guests. A rec room boasts a lounge with a fireplace, a bar, billiards, and outdoor egress to a lower terrace with a hot tub. Currently a storage room, an unheated room with the possibility to function as a wine room offers dedicated storage for belongings or favorite vintages. A powder room and a laundry room features convenience

## Main Home

 **5,386 square feet**  
 **6 bath**  
 **4 bed**

## Guest Home

 **1,955 square feet**  
 **2 bath**  
 **2 bed**

- ◆ 2.44 acre lot
- ◆ Two 2 car garages
- ◆ Hot tub
- ◆ Close access to cross country ski and hiking trails
- ◆ Panoramic vistas of the Madison Range

*This residence is located within Yellowstone Club, a 15,200 acre private, gated community located in Big Sky, Montana. Yellowstone Club is the world's only private ski and golf community, encompassing thousands of acres of private skiing along with a championship golf course designed by Tom Weiskopf. Additionally, whether looking to savor spectacular mountain panoramas, explore the vast wilderness or enjoy high-quality amenities, Yellowstone Club offers everything from fly fishing, hiking and biking trails to fine dining and spa services. Professional SnowSports, golf and outdoor recreation programs, along with dedicated children's activities, round out the unique Montana experience that is Yellowstone Club.*



for guests as they freshen up and stay tidy throughout their stay. A bunk room provides a spacious setting to host up to six guests featuring a long double size bunk and a queen size bed, as well as an en-suite bathroom and walk-in closet. Offering a private stay for friends and family, two additional guest suites, one of which functions as a junior primary suite, each feature an en-suite bathroom and walk-in closet.

### Guest Home

A breezeway connects the main home to the guest home, where two levels of living space provide a private stay for visiting friends and family. An open concept floor plan features soaring ceilings where a bright, airy space is warmed by a fireplace. Tucked around a television, a living room lounge offers entertainment while a kitchen with countertop seating offers a perch for enjoying a quick meal. A powder bathroom, laundry room, and connection to a two-car garage provide convenient guest accommodations.

A log beam staircase leads to the upper level loft where two guest bedrooms offer comfortable accommodations. A bunk room with a queen size bed and two twin beds provides space to sleep up to six guests. An additional guest suite features vaulted ceilings that open the room to a radiance of sunlight and space. Joining the two bedrooms, a jack and jill bathroom features a double vanity and a privacy door closing off the water closet and shower and bathtub.

With great opportunity always at the core of Yellowstone Club culture, Members can enjoy a life immersed in thrilling outdoor adventure alongside the comforts of high-end amenities. Surrounded by the majesty of the Montana Rockies, this mountain retreat features the ideal home to connect with oneself and others to make cherished memories that last a lifetime.







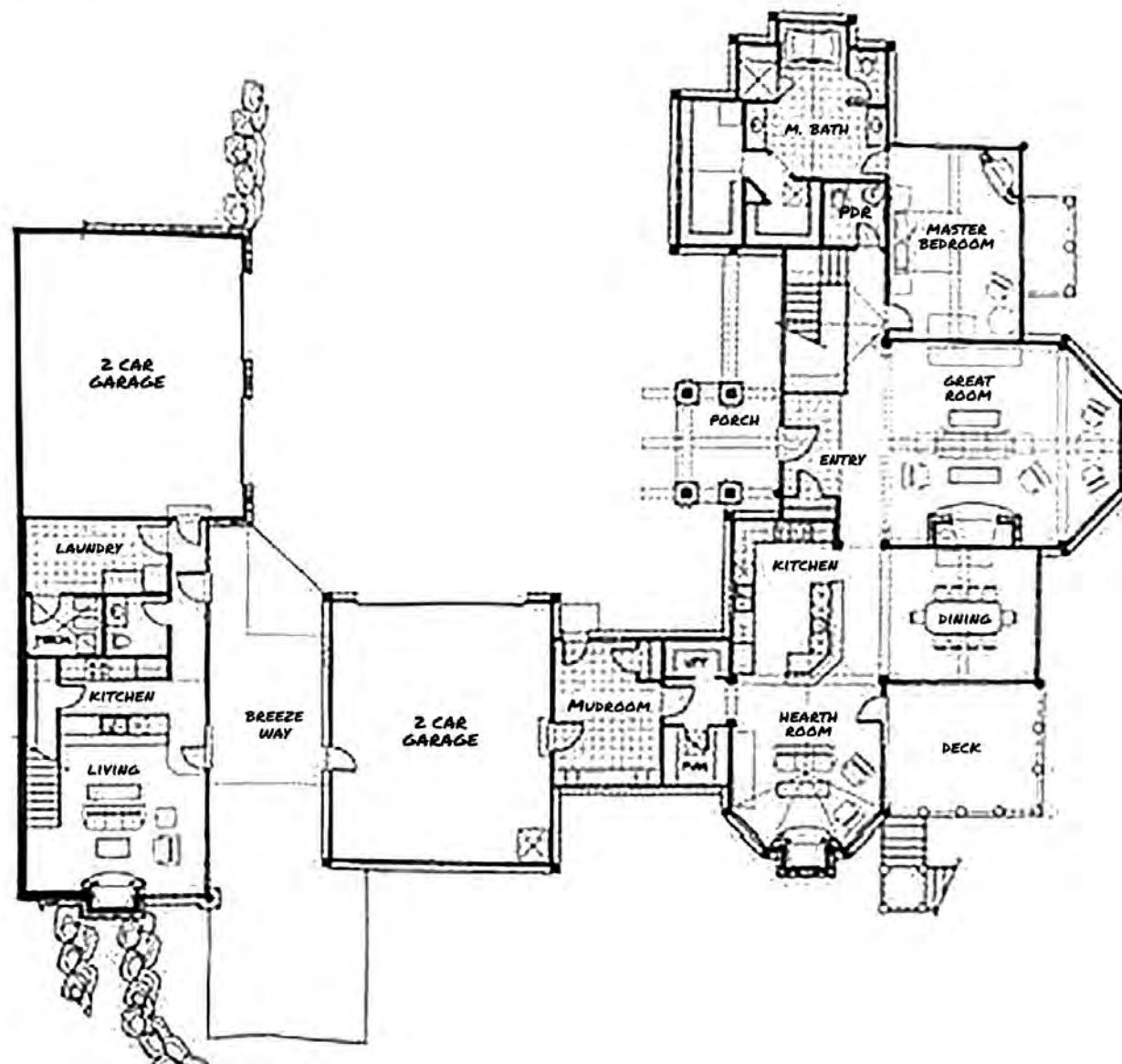


# Andesite Ridge 69A

5,386 total heated livable square footage

## Main Level

- ◆ Great Room
- ◆ Kitchen
- ◆ Mudroom
- ◆ Hearth Room
- ◆ Dining Room
- ◆ Master Bedroom Suite
- ◆ Deck
- ◆ Powder Room
- ◆ Breezeway to Guest House
- ◆ Guest House Kitchen
- ◆ Guest House Living Room
- ◆ Guest House Laundry



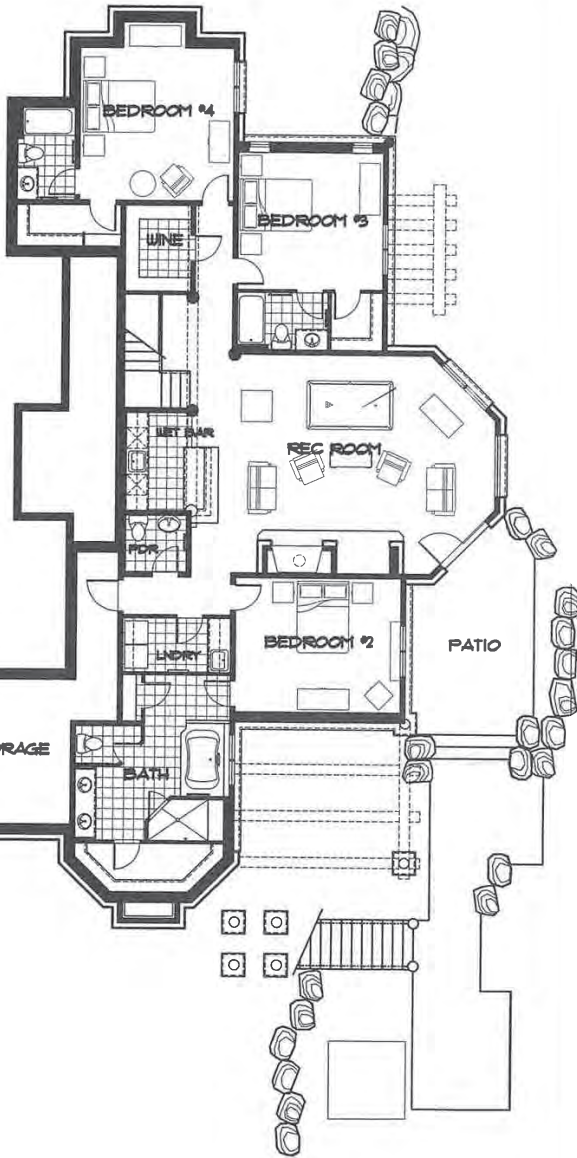
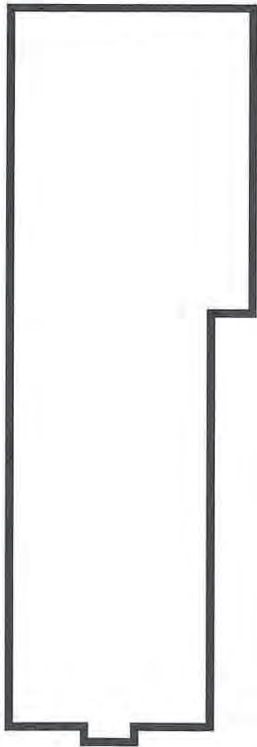


# Andesite Ridge 69A

5,386 total heated livable square footage

## Lower Level

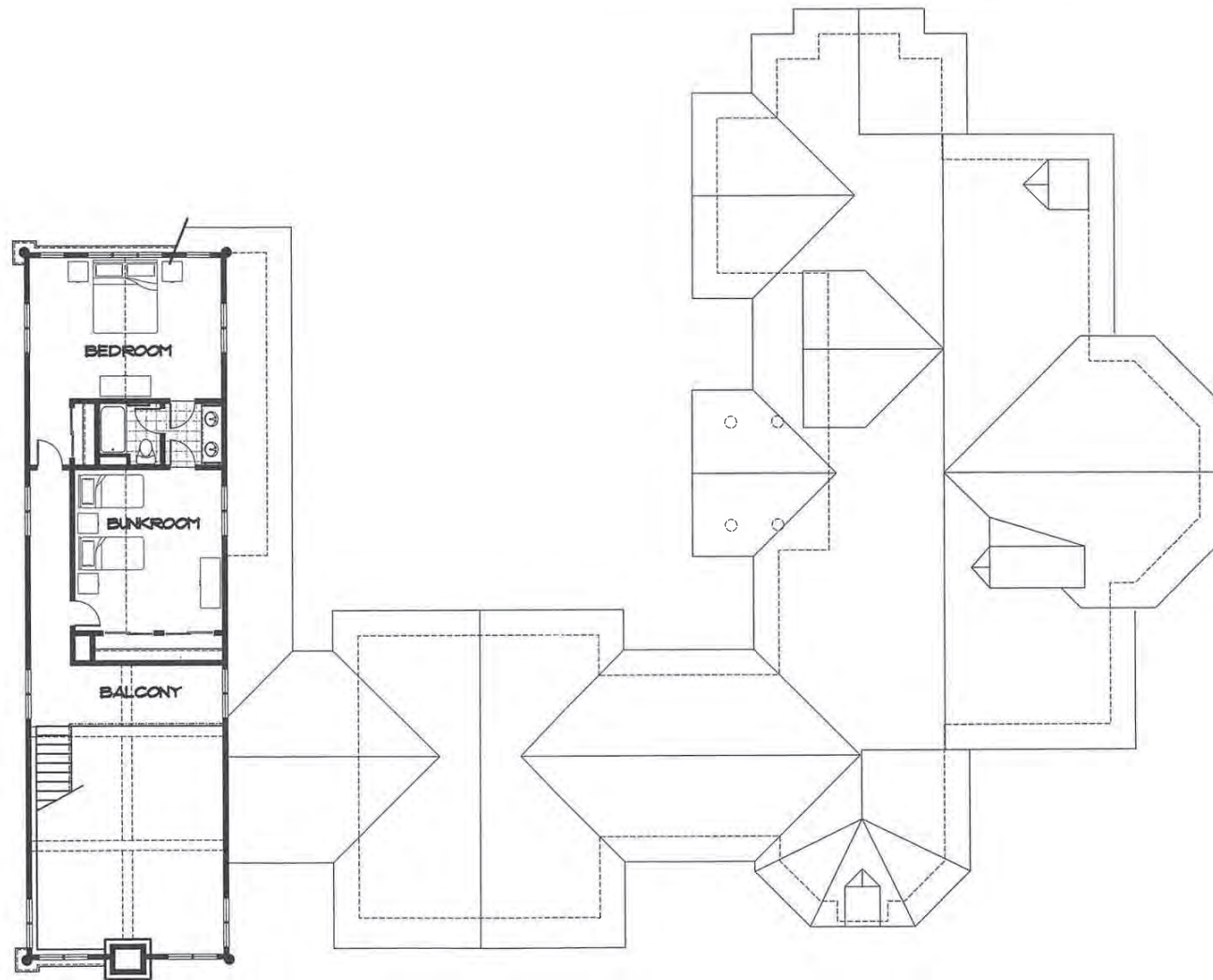
- ◆ Guest Bedroom Suites
- ◆ Powder Room
- ◆ Wine Cellar
- ◆ Wet Bar
- ◆ Rec Room
- ◆ Patio
- ◆ Laundry
- ◆ Storage





# Andesite Ridge 69A

938 total heated livable square footage



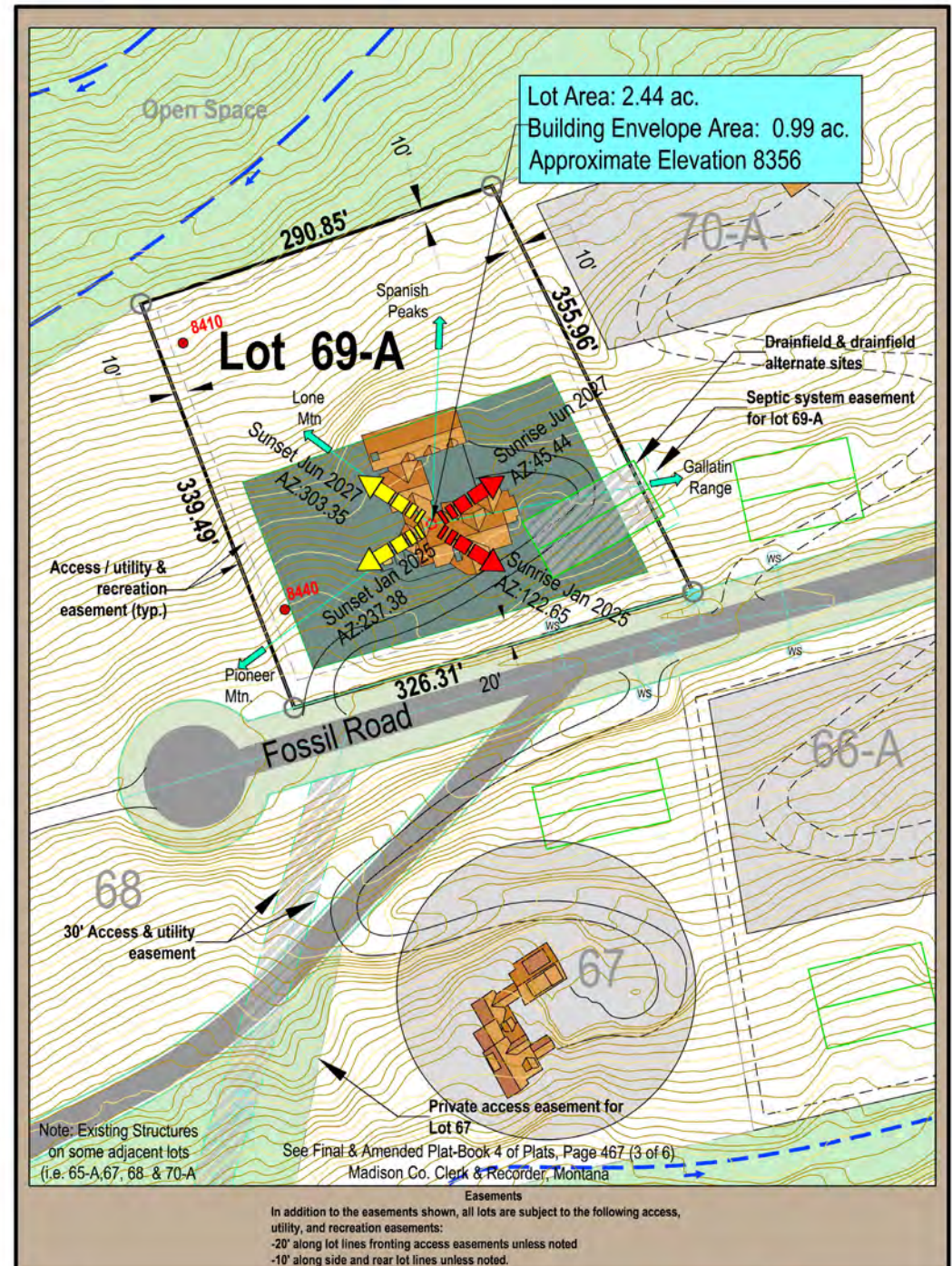
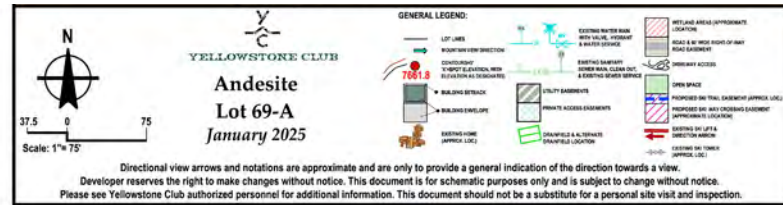
## Guest House

- ◆ Guest House Bedroom Suites
- ◆ Guest House Private Balcony



# Andesite Ridge 69A

## Lot Map







KITCHEN AND DINING



FLOOR TO CEILING WINDOWS





*A serene mountain  
retreat where  
adventure meets  
luxury and lasting  
memories are made.*





MASTER SUITE



MASTER SUITE BATHROOM





MASTER SUITE WALK-IN CLOSET





JUNIOR MASTER BEDROOM





JUNIOR MASTER BATHROOM



LOWER LEVEL LIVING AREA



BILLIARDS TABLE



WET BAR













GUEST HOUSE KITCHEN



GUEST HOUSE MASTER BEDROOM



GUEST HOUSE BUNK ROOM



GUEST HOUSE BATHROOM







*This retreat is  
the perfect place  
to connect with  
nature, loved  
ones, and lasting  
memories.*



















HOT TUB



PATIO AND DECK









**YELLOWSTONE CLUB®**

For more information about this property and its pricing please contact YC Realty.

(888) 700-7748 ♦ (406) 995-4900 ♦ [ycsales@yellowstoneclub.com](mailto:ycsales@yellowstoneclub.com)  
P.O. Box 161097 ♦ Big Sky, Montana 59716

[www.yellowstoneclub.com](http://www.yellowstoneclub.com)

All information deemed reliable, but not guaranteed. All acreages and square footages are estimates. The purchase of a home or homesite does not include membership in Yellowstone Club, or any right to use the private club facilities. Ownership of a home/homesite includes an obligation to pay assessments to a property owner's association. Please ask a sales associate for details. Photographs are representational of the approximate view corridors from the home. Livable square footages listed in this marketing piece are based upon the calculation of only the heated and livable areas within the exterior walls of the property and said square footages are deemed reliable, but not guaranteed. All acreages and square footages are estimates and are provided by the Seller or his designated representative; these measurements should not be a substitute for one's own evaluation and investigation. Ski accessibility is a relative term and can have different implications and meanings depending on the individual. One should investigate fully the property as it relates to its potential ski access and determine for themselves the degree of ski access the property might have or be developed. Buyer acknowledges and agrees that neither the Seller, the Broker, the Sales Associate nor any other real estate representative of the Yellowstone Club or its related affiliates have made any warranties or representations upon which Buyer has relied concerning the ski-in ski-out accessibility of the property. The determination of the level of ski access that a property might have will be the Buyers sole determination.