



Andesite Ridge 58A

3 Fossil Road

OPEN FLOORPLAN

2 — YELLOWSTONE CLUB ♦ Andesite Ridge 58A





FOYER



GREATROOM



DINING ROOM



KITCHEN

Andesite Ridge 58A

Nestled within the coveted Andesite Ridge neighborhood, this exceptional 7-bedroom, 8-bathroom home offers the finest of Southwest Montana living. Set on a 2.01-acre lot, this custom residence spans 9,275 square feet, blending rustic charm with contemporary elegance. Stone and wood finishes reflect the beauty of its natural surroundings, while expansive mountain views are visible from every direction. The home is ideally located near the Yellowstone Club's main gate, Village, and Warren Miller Lodge, offering both seclusion and access to amenities.

Built into a gentle downslope, the home integrates seamlessly with the landscape. Large windows and open-concept spaces create a connection to the outdoors, framing panoramic mountain views. An elevated deck and multiple outdoor seating areas provide perfect spots for enjoying sunrises, sunsets, or relaxing after a day on the slopes.

Inside, high beamed ceilings, natural stone, and rich wood evoke a modern mountain lodge ambiance. The spacious main living area includes a grand stone fireplace, plush seating, and ample natural light. Adjacent to the living area is a gourmet kitchen with top-of-the-line appliances, custom cabinetry, and a spacious island, making it a dream for culinary enthusiasts.

The residence includes seven private bedrooms, with the primary suite offering sweeping views, a spa-like bath, and a cozy seating area. Additional bedrooms are equally luxurious, each with en-suite bathrooms, ample closet space, and unique design touches.

Designed for relaxation and entertainment, the home features a lower-level game room with a pool table and bar, a state-of-the-art fitness room, and a beautifully designed spa area with an outdoor hot tub. Multiple terraces, dining spaces, and built-in fireplaces ensure year-round enjoyment of Montana's fresh air and stunning views. A barbecue area completes the outdoor living experience.

This Andesite Ridge residence offers a rare opportunity to experience a lifestyle defined by natural beauty, luxury, and community, with access to year-round recreational opportunities at the exclusive Yellowstone Club.

🏠 9,275 square feet
🛀 8 bath
🛏 7 bed

- ◆ 9,275 square feet
- ◆ 2.01 acres
- ◆ 7 bedrooms
- ◆ 8 bathrooms
- ◆ Views of the Spanish Peaks, Gallatin Range, YC Golf Course, Eglise and more

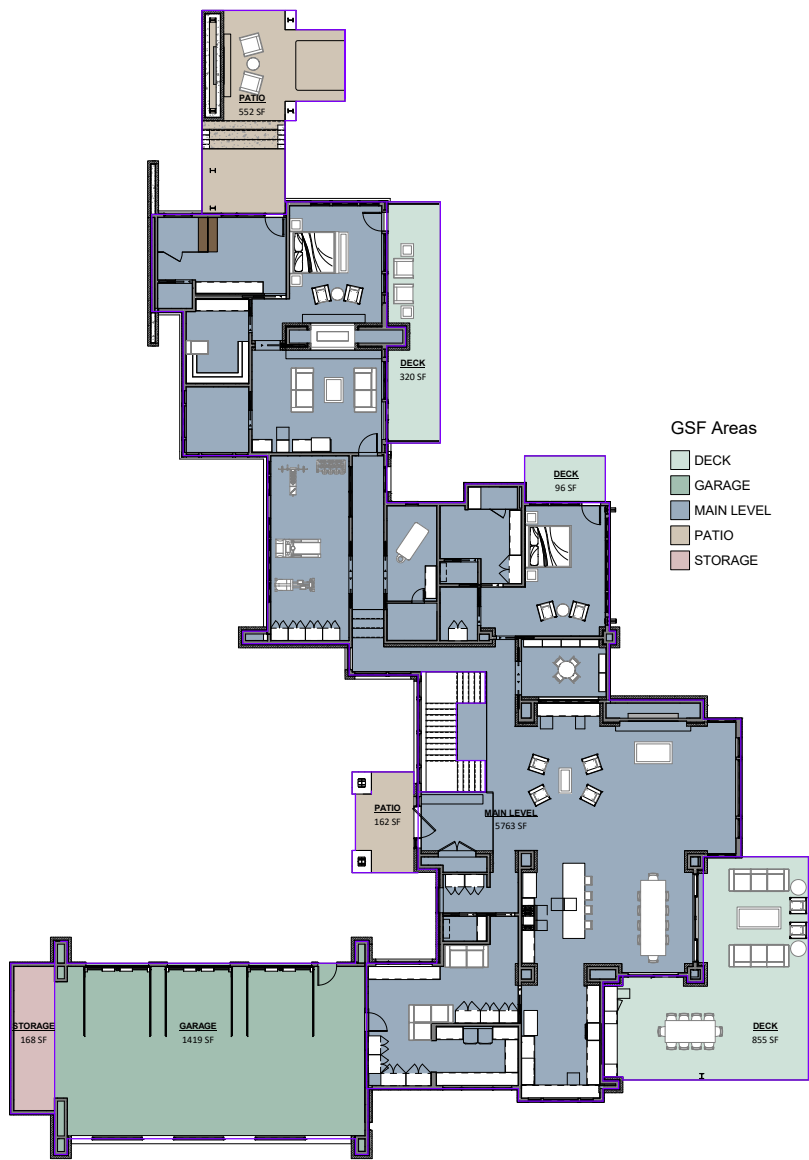
This residence is located within Yellowstone Club, a 15,200 acre private, gated community located in Big Sky, Montana. Yellowstone Club is the world's only private ski and golf community, encompassing thousands of acres of private skiing along with a championship golf course designed by Tom Weiskopf. Additionally, whether looking to savor spectacular mountain panoramas, explore the vast wilderness or enjoy high-quality amenities, Yellowstone Club offers everything from fly fishing, hiking and biking trails to fine dining and spa services. Professional SnowSports, golf and outdoor recreation programs, along with dedicated children's activities, round out the unique Montana experience that is Yellowstone Club.

Andesite Ridge 58A

9,275 total heated livable square footage

Main Level

- ◆ Great Room
- ◆ Kitchen
- ◆ Dining Room
- ◆ Wine Cellar
- ◆ Master Bedroom Suite with Private Deck, Private Patio and Hot Tub
- ◆ Office
- ◆ Fitness Center with Massage Room and Sauna
- ◆ Guest Suite
- ◆ Mudroom
- ◆ Laundry
- ◆ Butler's Pantry
- ◆ Deck



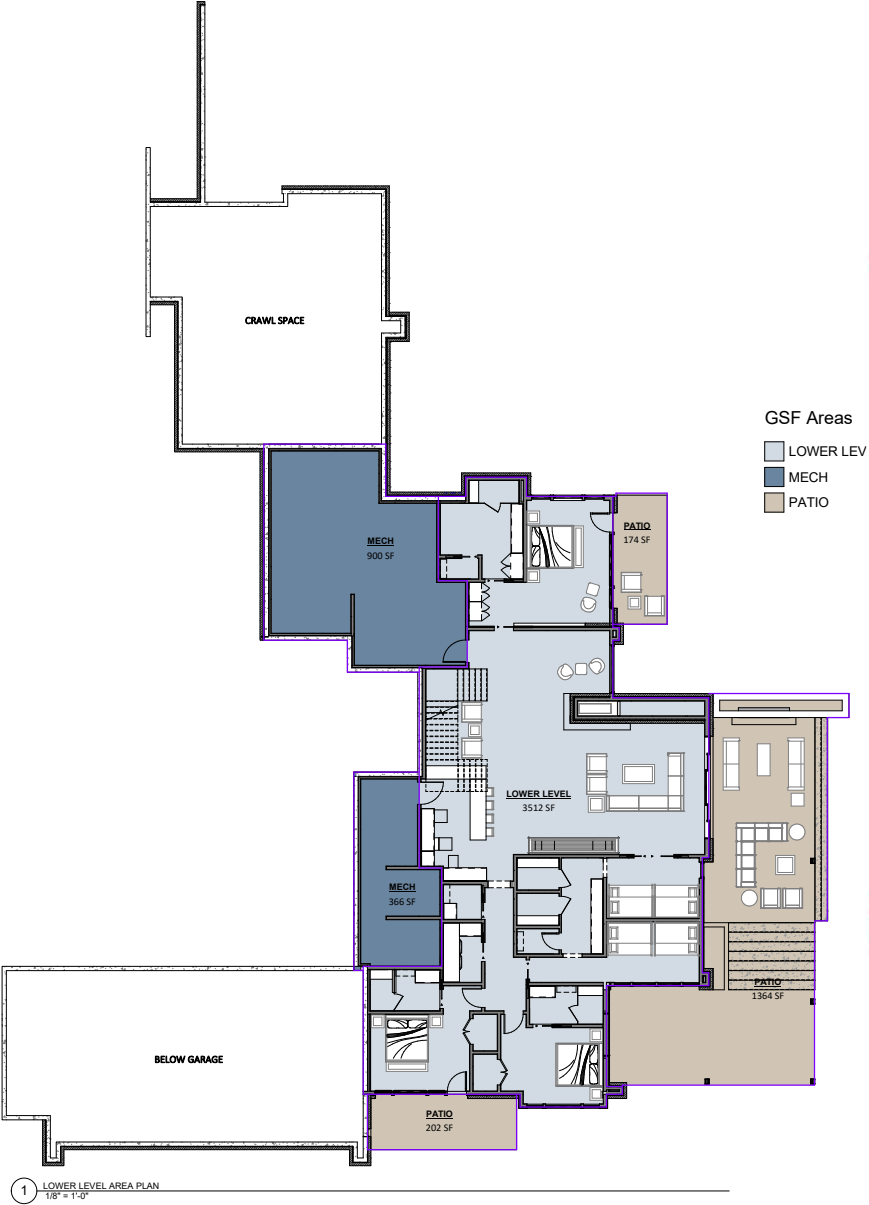
2 MAIN LEVEL AREA PLAN
1/8" = 1'-0"

Andesite Ridge 58A

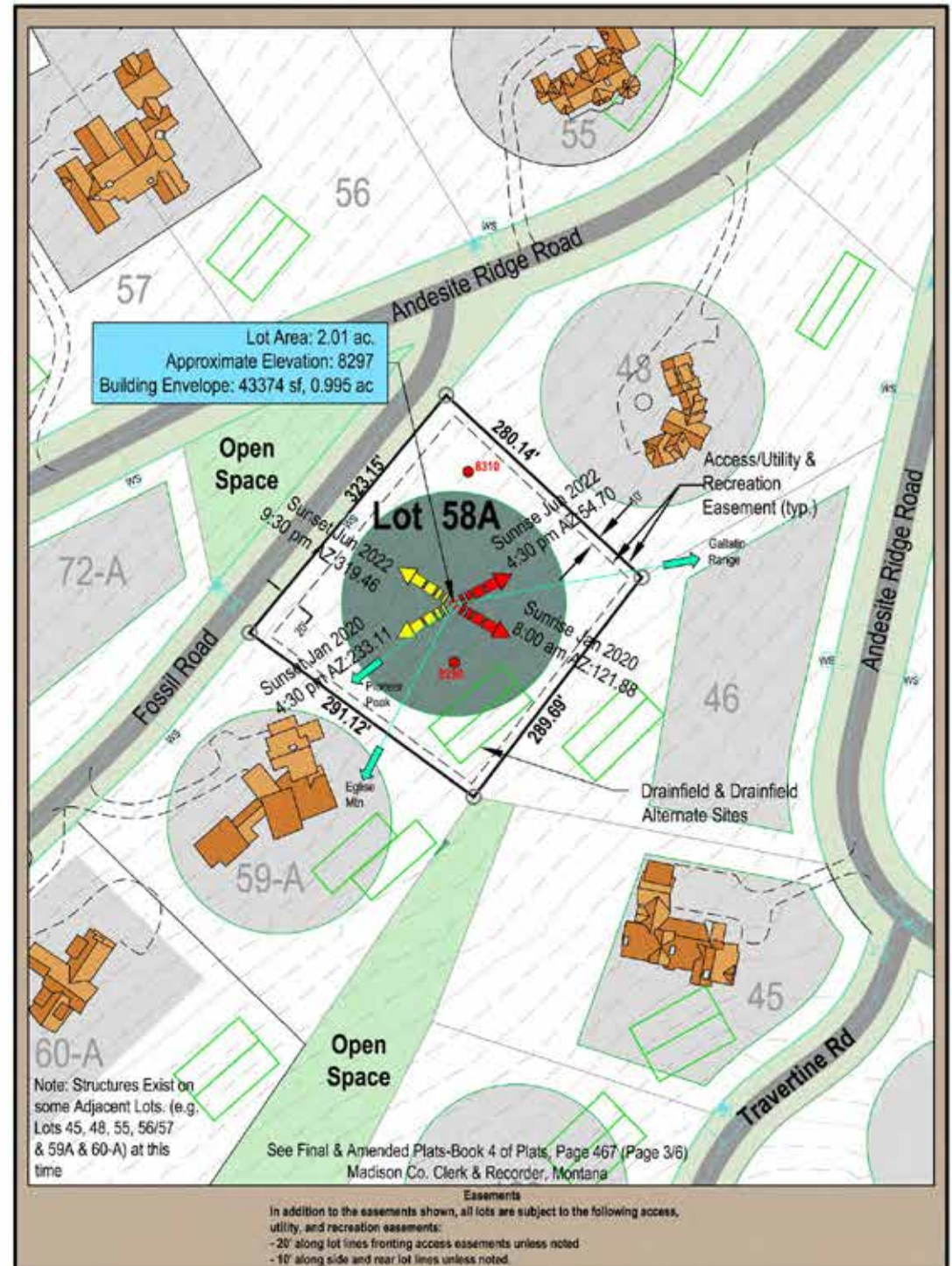
9,275 total heated livable square footage

Lower Level

- ◆ Game Room
- ◆ Lounge
- ◆ Guest Suite with Private Patio
- ◆ Wet Bar
- ◆ Bunk Room Suites
- ◆ Patio with Hot Tub
- ◆ Laundry
- ◆ Additional Guest Suites



8 — **YELLOWSTONE CLUB** ♦ Andesite Ridge 58A

[illegible]





GREATROOM



FLOOR TO CEILING WINDOWS



*Blending rustic
charm with
contemporary
elegance.*



MASTER SUITE



MASTER SUITE BATHROOM



MASTER SUITE LOUNGE WITH PRIVATE DECK



GUEST BEDROOM



GUEST BATHROOM



MASTER SUITE LOUNGE WET BAR



MASSAGE ROOM WITH SAUNA



FITNESS CENTER

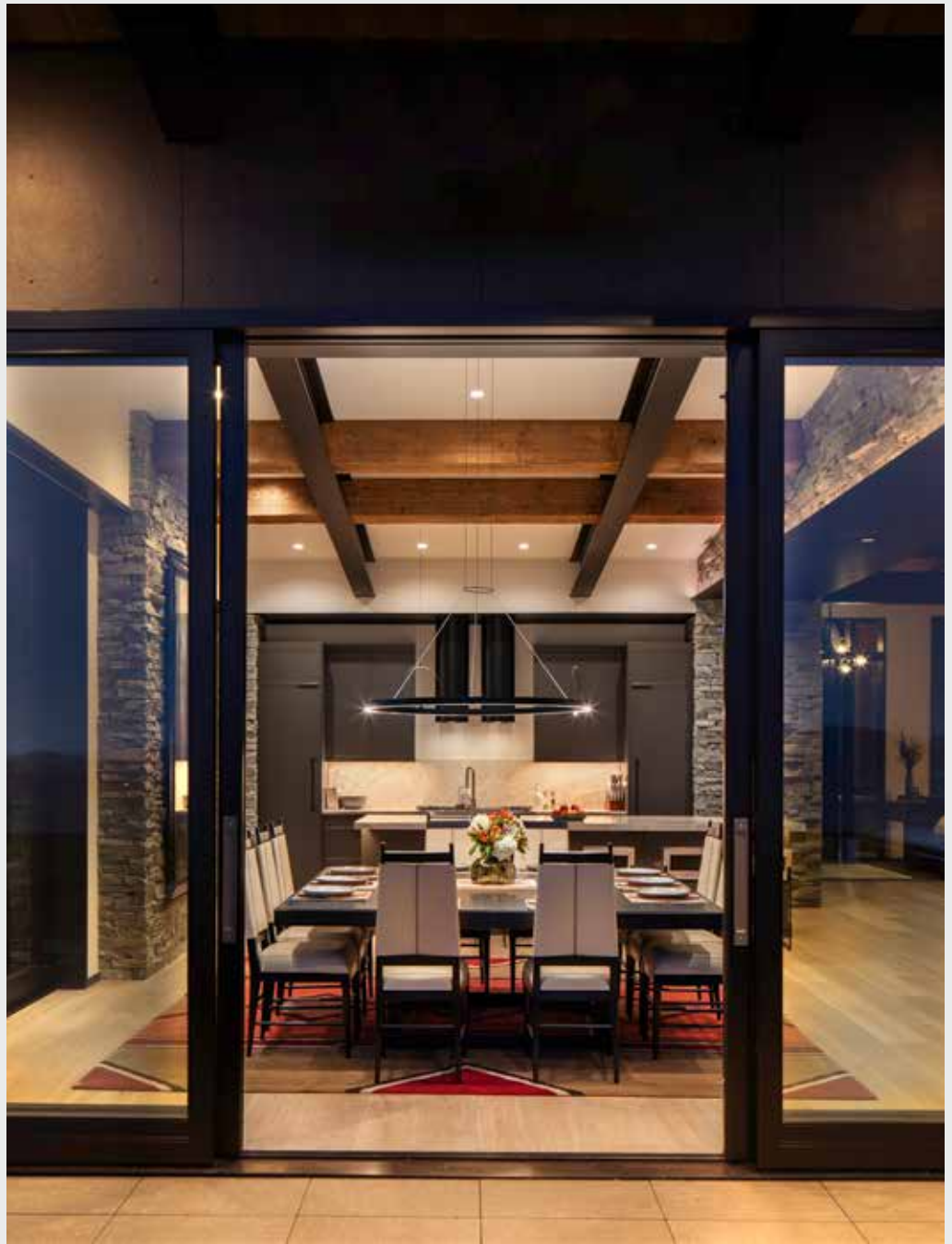




LOWER LEVEL LIVING & ENTERTAINMENT

“Montana living is all about embracing the outdoors, and this home is designed to facilitate that connection.”











PATIO VIEWS



OUTDOOR FIREPLACE





YELLOWSTONE CLUB®

For more information about this property and its pricing please contact YC Realty.

(888) 700-7748 ♦ (406) 995-4900 ♦ ycsales@yellowstoneclub.com
P.O. Box 161097 ♦ Big Sky, Montana 59716

www.yellowstoneclub.com

All information deemed reliable, but not guaranteed. All acreages and square footages are estimates. The purchase of a home or homesite does not include membership in Yellowstone Club, or any right to use the private club facilities. Ownership of a home/homesite includes an obligation to pay assessments to a property owner's association. Please ask a sales associate for details. Photographs are representational of the approximate view corridors from the home. Livable square footages listed in this marketing piece are based upon the calculation of only the heated and livable areas within the exterior walls of the property and said square footages are deemed reliable, but not guaranteed. All acreages and square footages are estimates and are provided by the Seller or his designated representative; these measurements should not be a substitute for one's own evaluation and investigation. Ski accessibility is a relative term and can have different implications and meanings depending on the individual. One should investigate fully the property as it relates to its potential ski access and determine for themselves the degree of ski access the property might have or be developed. Buyer acknowledges and agrees that neither the Seller, the Broker, the Sales Associate nor any other real estate representative of the Yellowstone Club or its related affiliates have made any warranties or representations upon which Buyer has relied concerning the ski-in ski-out accessibility of the property. The determination of the level of ski access that a property might have will be the Buyers sole determination.