



Andesite Pointe 3A

12 Amethyst Road





LIVING ROOM



ENTRY FOYER



DINING ROOM



LIVING ROOM

Andesite Pointe 3A

Nestled atop Andesite Ridge, 12 Amethyst Road offers a luxurious ski-in/ski-out retreat within the exclusive Yellowstone Club. This alpine haven provides immediate access to year-round adventure, including thousands of acres of Private Powder®, while remaining close to high-end amenities. Designed to immerse owners in nature, the home incorporates rustic textures, natural elements, and a neutral palette for a serene mountain lifestyle.

The great room features soaring ceilings, exposed timber beams, and floor-to-ceiling windows showcasing breathtaking views of Lone Peak. A wood-burning fireplace creates a cozy ambiance, while the open-concept layout seamlessly connects indoor and outdoor spaces. A high-end kitchen with a butler's pantry, wet bar, and island seating makes entertaining effortless. The adjacent formal dining room, with striking views and terrace access, is ideal for intimate meals or summer barbecues. A powder room, mudroom, ski storage, and terrace-to-garage access ensure convenience.

The primary suite is a sanctuary of relaxation, boasting vaulted ceilings, a canopy bed, a lounge with a fireplace, and a private terrace. The en-suite bathroom offers a spa-like experience with a soaking tub by the fireplace, a large walk-in closet, two vanities, a makeup vanity, and a river stone mosaic shower.

Upstairs, a bright loft leads to three guest bedrooms. The first suite features vaulted ceilings, a lounge, and an en-suite bath. The second has a rustic tree branch bed and convenient hall bath access. The third doubles as an office with a built-in daybed and en-suite bath. A lounge area with a wet bar and entertainment space completes the level.

The lower level is designed for entertainment and wellness. A cozy lounge with a fireplace, billiards, a wine room, and wet bar invites gatherings. A fitness center with a sauna, a mudroom with ski storage, and terrace access to a hot tub enhance the experience. A junior primary suite with terrace access, a bunkroom with built-in beds, and a den provide comfortable accommodations for guests.

Set on five secluded acres, 12 Amethyst Road offers an unparalleled mountain retreat where cherished memories and alpine adventures await.

🏠 **5.02 acres**
🛀 **10 bath**
🛏 **6 bed**

- ♦ 5.02 acres of private property
- ♦ 10,111 heated livable sq. ft.
- ♦ 8,430 approximate elevation
- ♦ 5 bedrooms + 1 bunkroom
- ♦ 7 bathrooms + 3 powder rooms
- ♦ 3 car garage
- ♦ Ski-in ski-out via Andesite Lift
- ♦ Striking vistas of Lone Peak, Pioneer Mountain, and the Gallatin Range

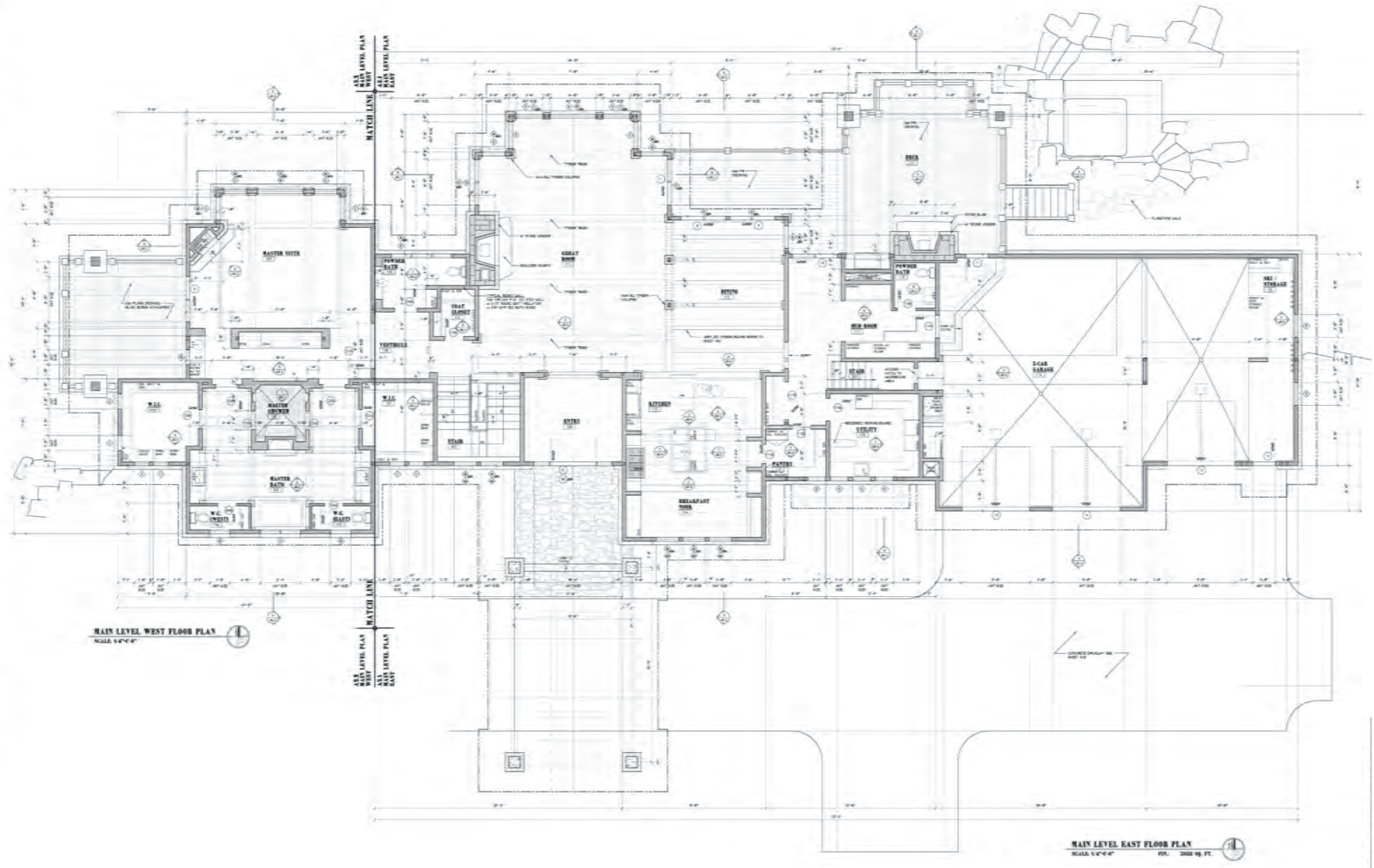
This residence is located within Yellowstone Club, a 15,200 acre private, gated community located in Big Sky, Montana. Yellowstone Club is the world's only private ski and golf community, encompassing thousands of acres of private skiing along with a championship golf course designed by Tom Weiskopf. Additionally, whether looking to savor spectacular mountain panoramas, explore the vast wilderness or enjoy high-quality amenities, Yellowstone Club offers everything from fly fishing, hiking and biking trails to fine dining and spa services. Professional SnowSports, golf and outdoor recreation programs, along with dedicated children's activities, round out the unique Montana experience that is Yellowstone Club.

Andesite Pointe 3A

10,111 total heated livable square footage

Main Level

- ♦ Entry Foyer
- ♦ Great Room
- ♦ Powder Baths
- ♦ Kitchen
- ♦ Breakfast Nook
- ♦ Formal Dining Room
- ♦ Outdoor Living Space
- ♦ Hot Tub
- ♦ Utility Room
- ♦ 3-Car Garage
- ♦ Ski Storage
- ♦ Master Suite with Balcony

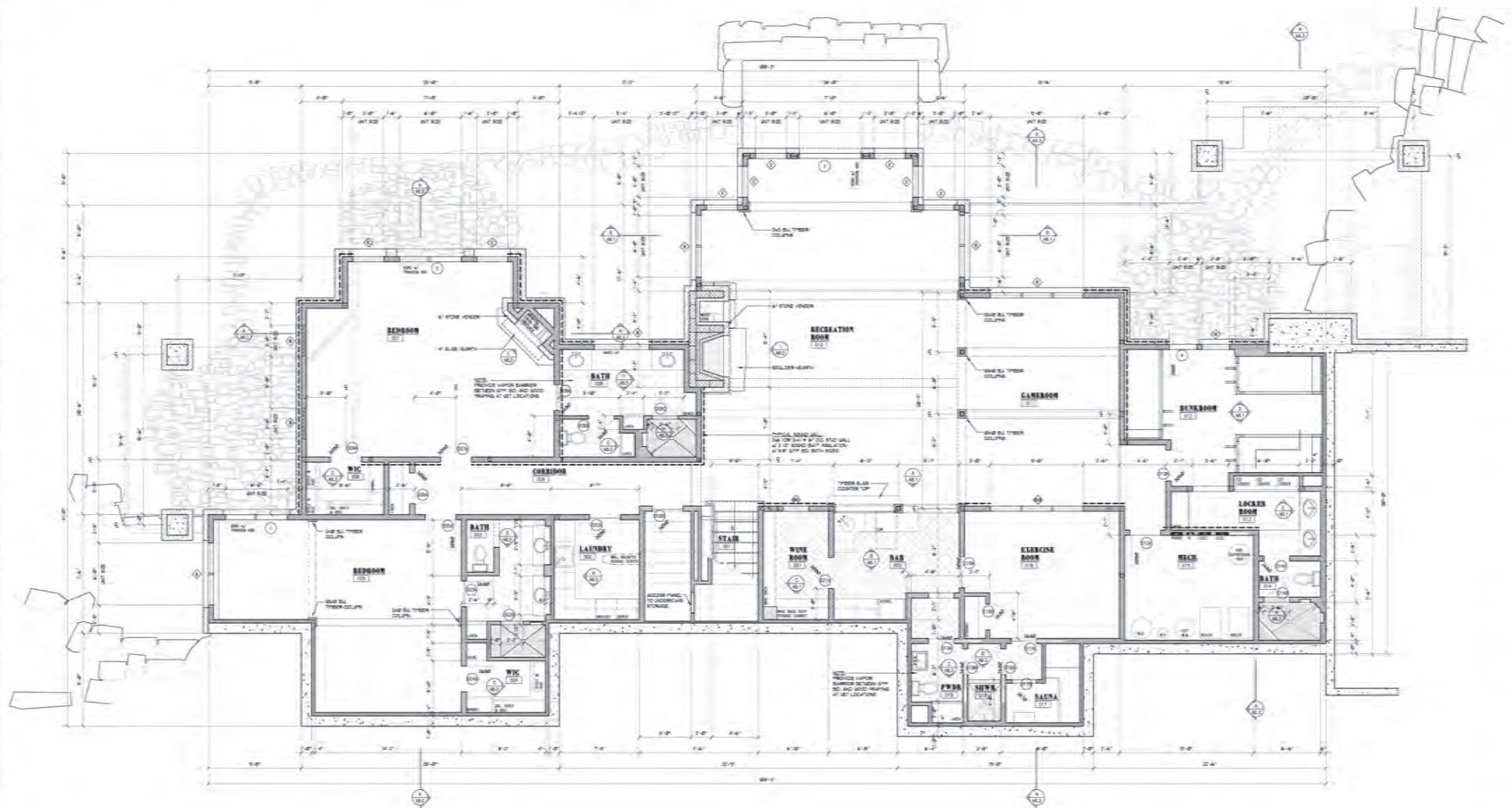


Andesite Pointe 3A

10,111 total heated livable square footage

Lower Level

- ◆ Guest Suites
- ◆ Laundry Room
- ◆ Rec Room
- ◆ Game Room
- ◆ Wet Bar
- ◆ Wine Cellar
- ◆ Bunkroom
- ◆ Mud Room
- ◆ Gym
- ◆ Sauna
- ◆ Mechanical
- ◆ Patios



LOWER LEVEL FLOOR PLAN

SCALE 1/4"=1'-0"

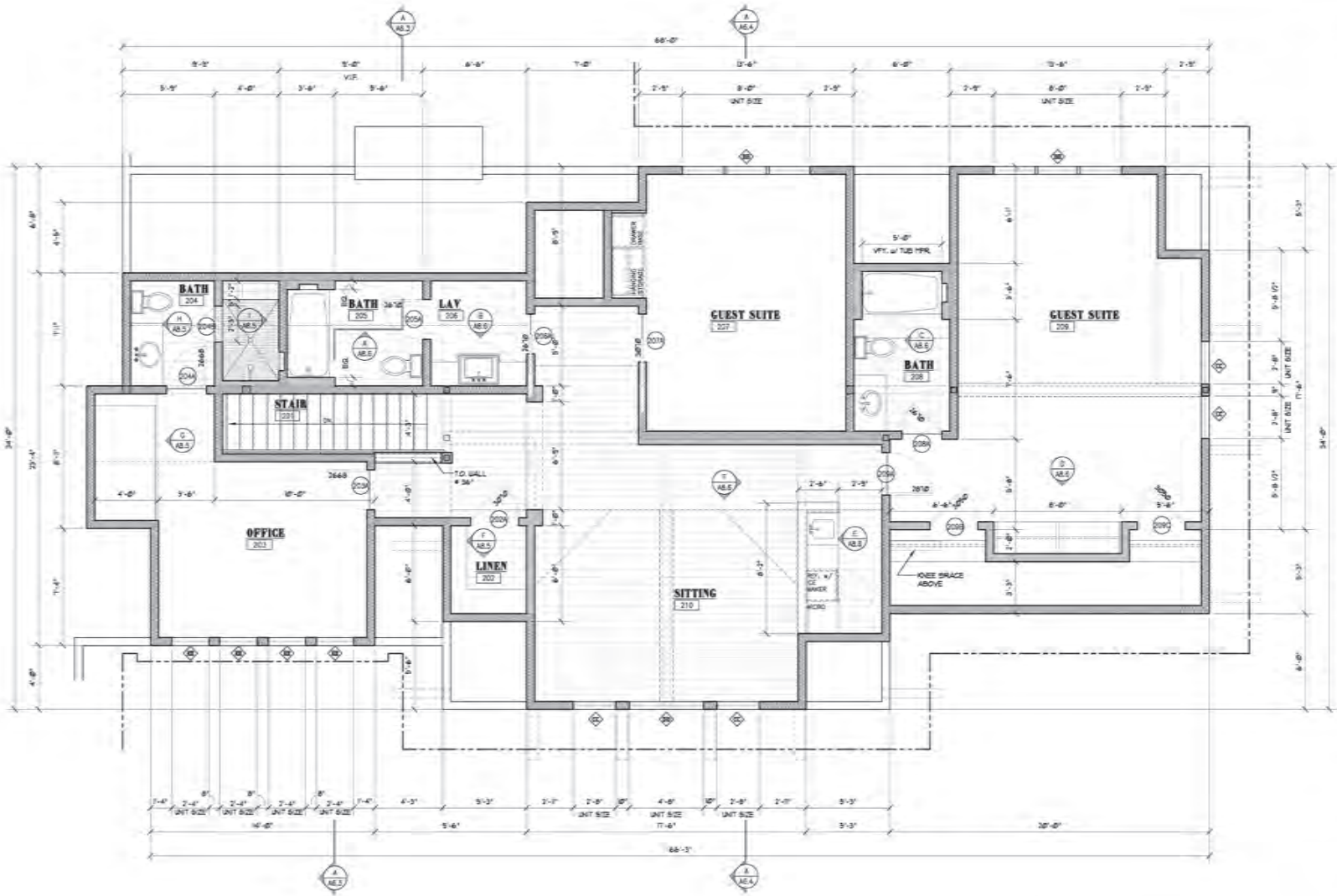
FIN. 2800 SQ. FT.
MECH. 325 SQ. FT.

Andesite Pointe 3A

10,111 total heated livable square footage

Upper Level

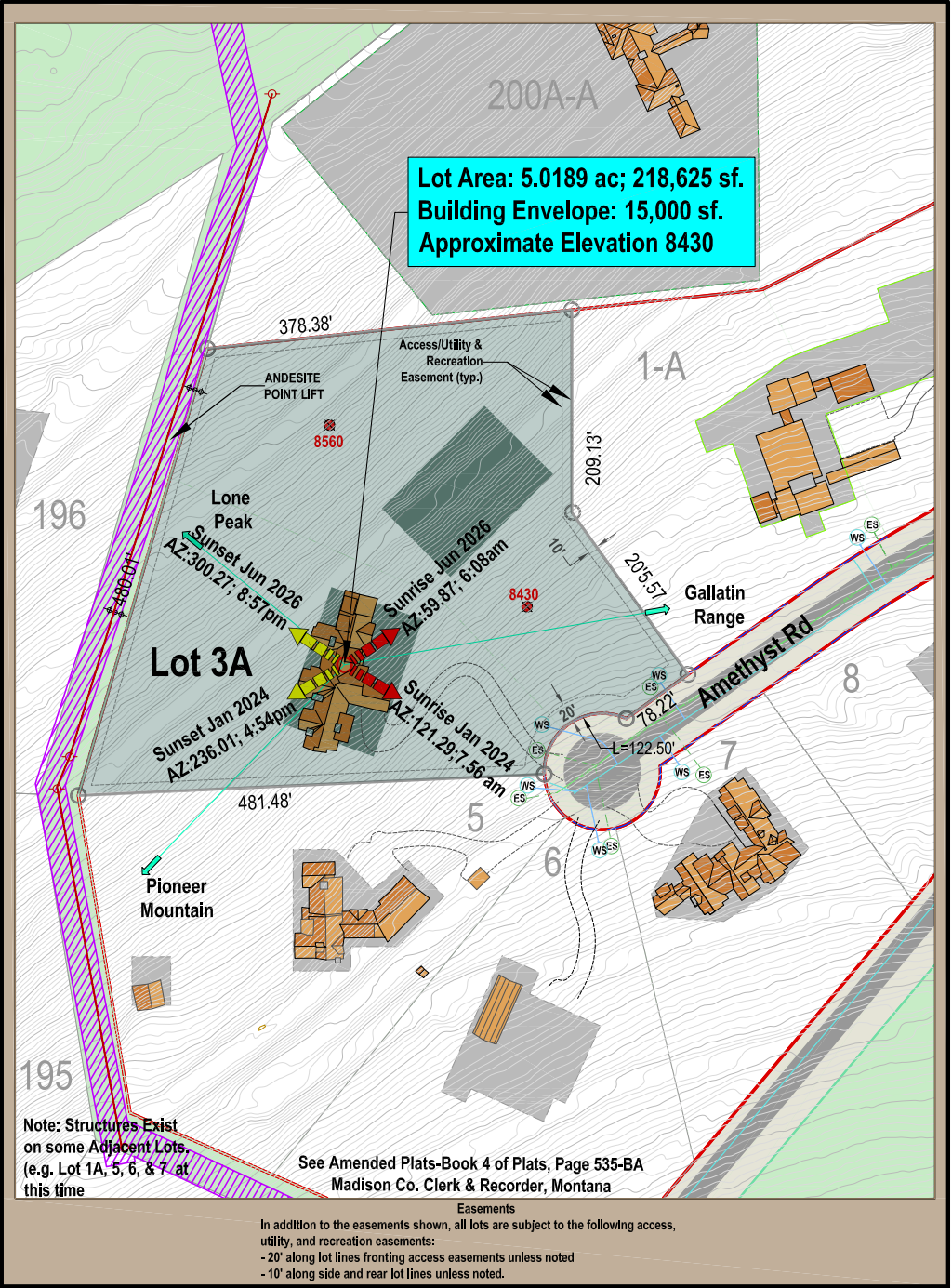
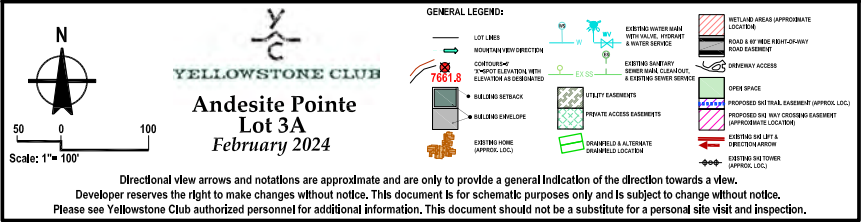
- ◆ Guest Suite #1
- ◆ Guest Suite #2
- ◆ Sitting Room
- ◆ Office



UPPER LEVEL FLOOR PLAN
SCALE: 1/4"=1'-0" 1776 SQ. FT.

Andesite Pointe 3A

Lot Map





WINE CELLAR



LIVING ROOM



The great room features soaring ceilings, exposed timber beams, and floor-to-ceiling windows showcasing breathtaking views of Lone Peak.



MASTER SUITE



MASTER SUITE BATHROOM



MASTER SUITE BATHROOM



GUEST BEDROOM



UPSTAIRS LOFT



GUEST BATHROOM



OFFICE



GUEST BATHROOM



LAUNDRY ROOM



GYM



BUNKROOM



BUNKROOM SITTING AREA



12 Amethyst Road offers an unparalleled mountain retreat where cherished memories and alpine adventures await.



DECK



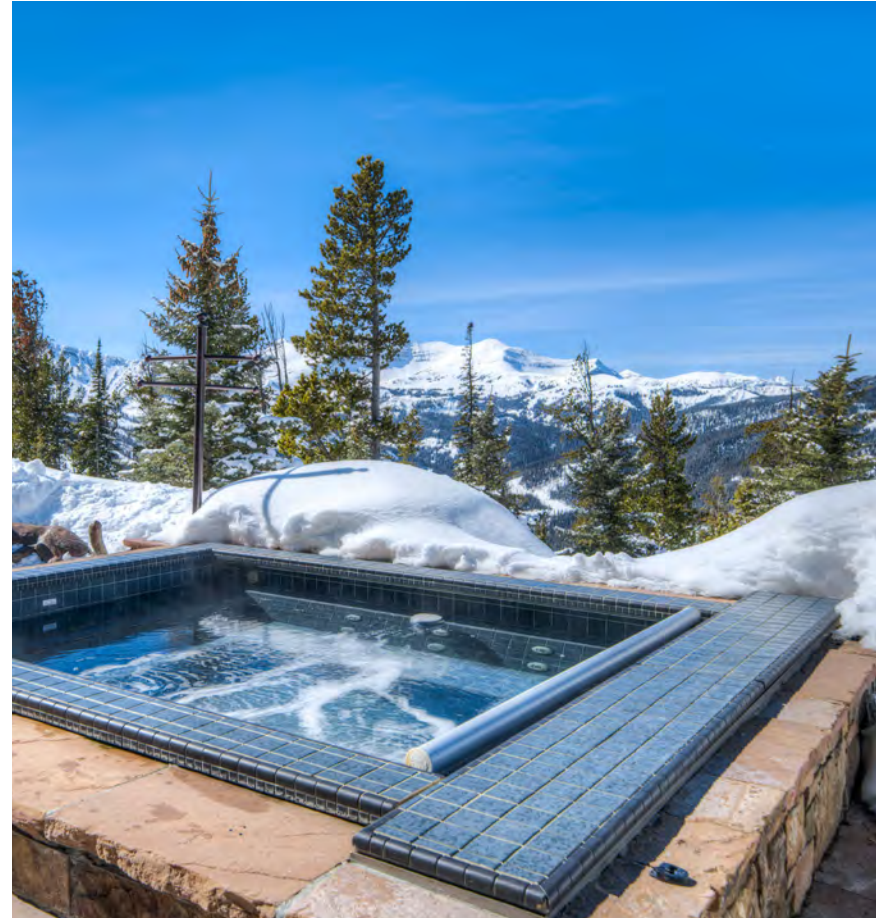
MUDROOM







PATIO



HOT TUB





YELLOWSTONE CLUB®

For more information about this property and its pricing please contact YC Realty.

(888) 700-7748 ♦ (406) 995-4900 ♦ ycsales@yellowstoneclub.com
P.O. Box 161097 ♦ Big Sky, Montana 59716

www.yellowstoneclub.com

All information deemed reliable, but not guaranteed. All acreages and square footages are estimates. The purchase of a home or homesite does not include membership in Yellowstone Club, or any right to use the private club facilities. Ownership of a home/homesite includes an obligation to pay assessments to a property owner's association. Please ask a sales associate for details. Photographs are representational of the approximate view corridors from the home. Livable square footages listed in this marketing piece are based upon the calculation of only the heated and livable areas within the exterior walls of the property and said square footages are deemed reliable, but not guaranteed. All acreages and square footages are estimates and are provided by the Seller or his designated representative; these measurements should not be a substitute for one's own evaluation and investigation. Ski accessibility is a relative term and can have different implications and meanings depending on the individual. One should investigate fully the property as it relates to its potential ski access and determine for themselves the degree of ski access the property might have or be developed. Buyer acknowledges and agrees that neither the Seller, the Broker, the Sales Associate nor any other real estate representative of the Yellowstone Club or its related affiliates have made any warranties or representations upon which Buyer has relied concerning the ski-in ski-out accessibility of the property. The determination of the level of ski access that a property might have will be the Buyers sole determination.