



American Spirit 866

14 Revere Way

GREAT ROOM

2 — YELLOWSTONE CLUB ♦ American Spirit 866





DINING ROOM



SKI ROOM



KITCHEN



STATE-OF-THE-ART APPLIANCES

American Spirit 866

Slopeside on Pioneer Mountain at the Yellowstone Club, the American Spirit neighborhood welcomes Members to a tight-knit community of ski-in ski-out residences. Endless opportunities for year-round adventure paired with luxury Club amenities allow Members to fully embrace an elevated mountain lifestyle. Blending modern interiors with rustic accents, 14 Revere Way features a clean aesthetic warmed by natural materials. Vistas of Lone Peak are framed throughout the home, inspiring connection to the mountainscape. An elevator effortlessly connects all three levels, enhancing convenience and accessibility. With a prime location on the American Spirit skiway, the alpine retreat offers a short ski to the Rainbow Lodge, an après favorite for dining and relaxation. Here, cherished memories are made in the majesty of the Montana Rockies.

Designed for unforgettable getaways, open-concept living encourages gathering beneath vaulted ceilings and walls of windows. The great room features a wood-burning fireplace and airy lounge. In the kitchen, state-of-the-art appliances and white marble countertops elevate the culinary experience. Counter seating offers a casual spot for conversation, while a formal dining table sits beside panoramic windows. The media room includes a fireplace, lounge, and wet bar. A covered terrace with barbecue and dining area is perfect for summer evenings. A nearby powder room, laundry, ski locker room with outdoor egress, and mudroom ensure tidy transitions from mountain adventures. A dog wash station and RV stall in the garage add thoughtful convenience.

A guest bedroom features a fireplace, en-suite bath, and private terrace. Another guest suite includes a walk-in closet and refined en-suite.

The lower level offers a rec room, bar, game lounge, and access to a terrace with firepit and hot tub. A sauna with bathroom and shower provides post-ski rejuvenation. Ideal for hosting, the bunk room accommodates up to twelve guests with three queen bunk sets, a spacious en-suite, and locker storage. Two additional guest suites feature en-suite baths and walk-in closets. A laundry room adds ease for guests.

Upstairs, the primary suite features vaulted ceilings, walls of glass, and a wood-burning fireplace. Glass doors open to a private terrace overlooking Lone Peak. The en-suite includes a soaking tub, walk-in closet, and lock-off room. A quiet office provides a focused space to work.

With close access to the heart of the Yellowstone Club, 14 Revere Way is a timeless retreat where luxury, nature, and adventure converge in unforgettable ways.

🏠 7,857 square feet
🛀 7.5 bath
🛏 6 bed

- ◆ 0.95 acre lot
- ◆ 2 car garage with recreational vehicle garage
- ◆ Elevator
- ◆ Sauna
- ◆ Ski-in ski-out
- ◆ Panoramic vistas of Lone Peak, Pioneer Ridge, Gallatin Range, and the Spanish Peaks

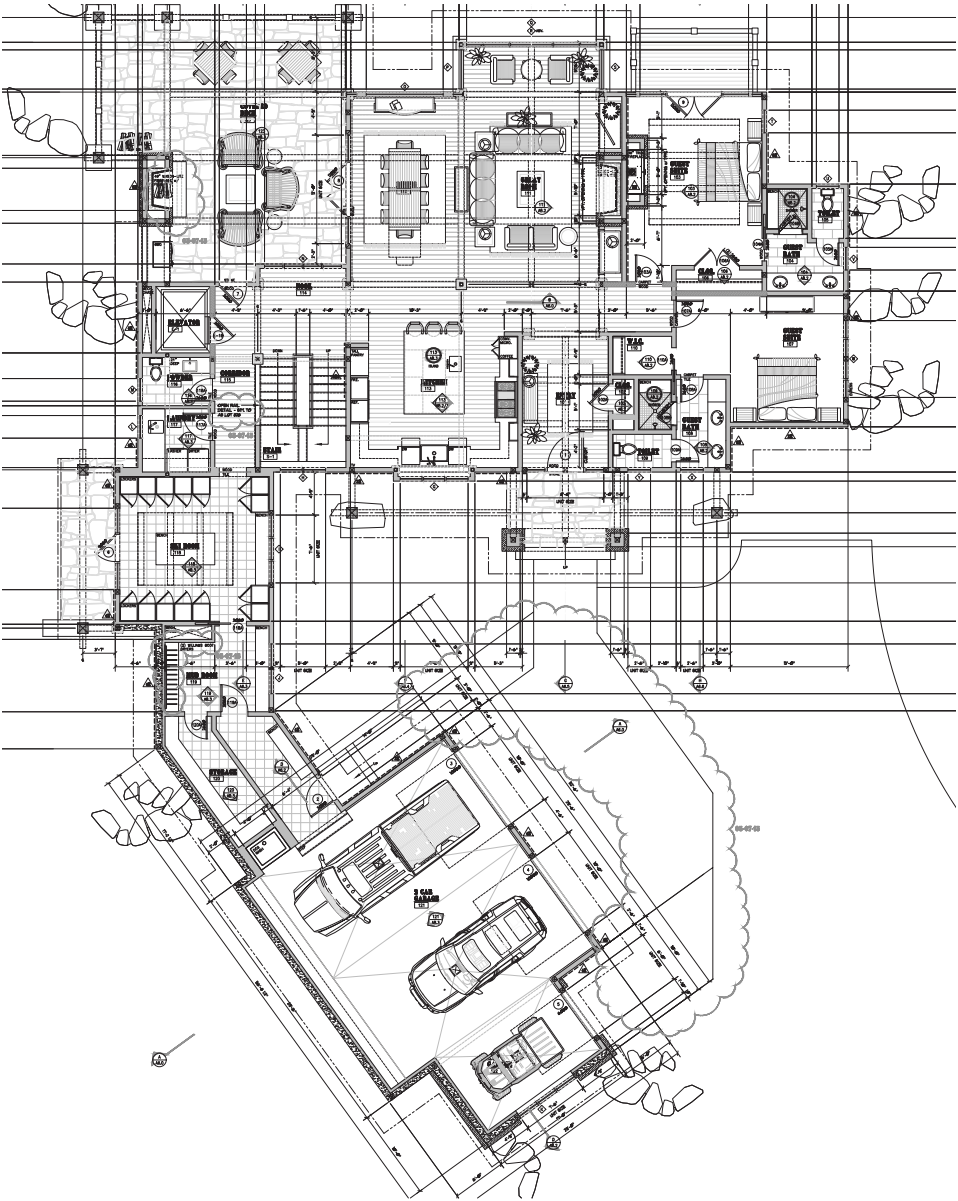
This residence is located within Yellowstone Club, a 15,200 acre private, gated community located in Big Sky, Montana. Yellowstone Club is the world's only private ski and golf community, encompassing thousands of acres of private skiing along with a championship golf course designed by Tom Weiskopf. Additionally, whether looking to savor spectacular mountain panoramas, explore the vast wilderness or enjoy high-quality amenities, Yellowstone Club offers everything from fly fishing, hiking and biking trails to fine dining and spa services. Professional SnowSports, golf and outdoor recreation programs, along with dedicated children's activities, round out the unique Montana experience that is Yellowstone Club.

American Spirit 866

7,857 total heated livable square footage

Main Level

- ◆ Great Room
- ◆ Kitchen
- ◆ Lounge
- ◆ Dining Room
- ◆ Mud Room
- ◆ Ski Room
- ◆ Laundry Room
- ◆ Media Room with Wet Bar
- ◆ Dog Wash Station in Garage
- ◆ Covered Terrace with Barbecue and Dining Area
- ◆ Elevator Access

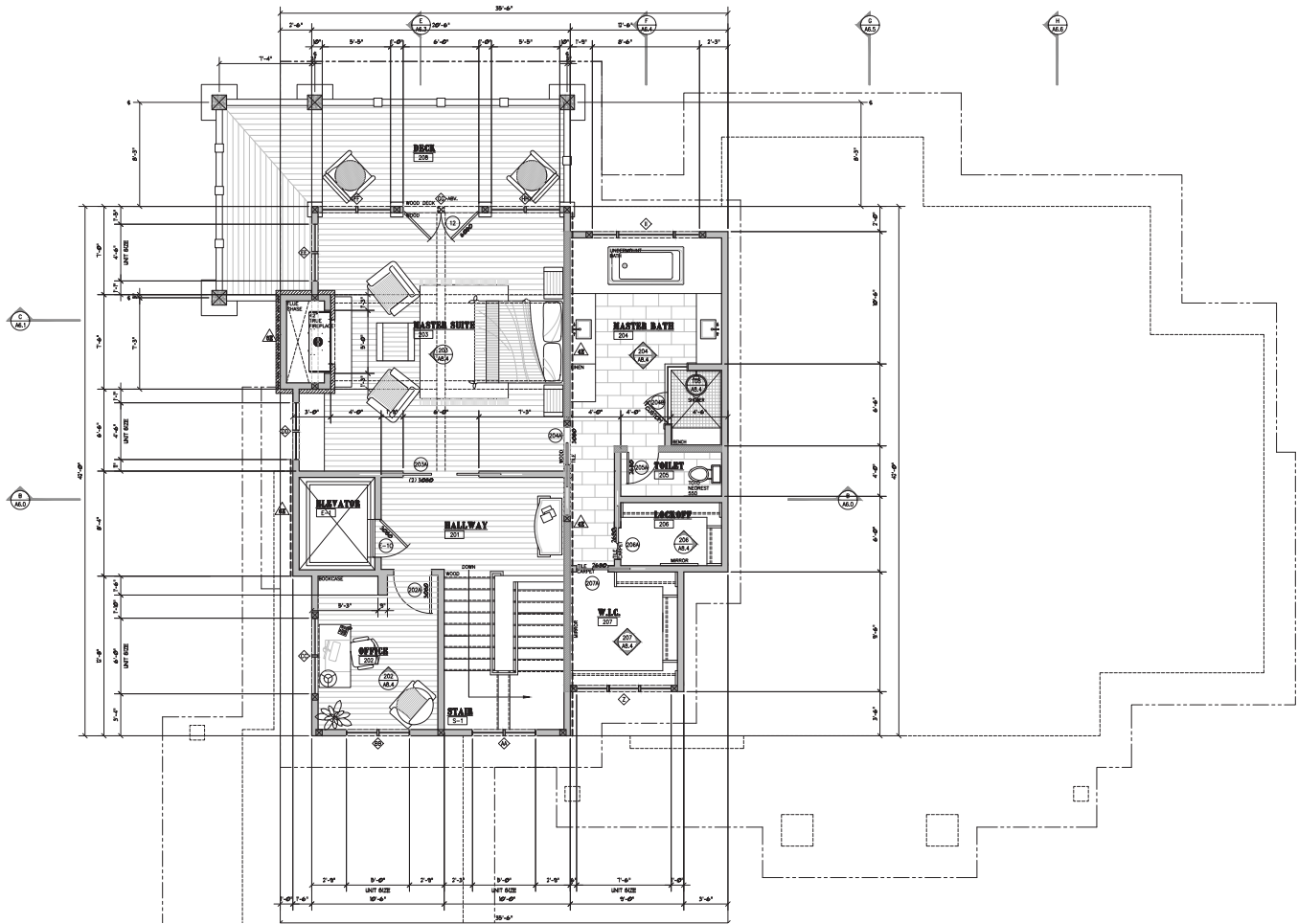


American Spirit 866

7,857 total heated livable square footage

Upper Level

- ◆ Master Bedroom Suite with Private Terrace
- ◆ Office
- ◆ Elevator Access

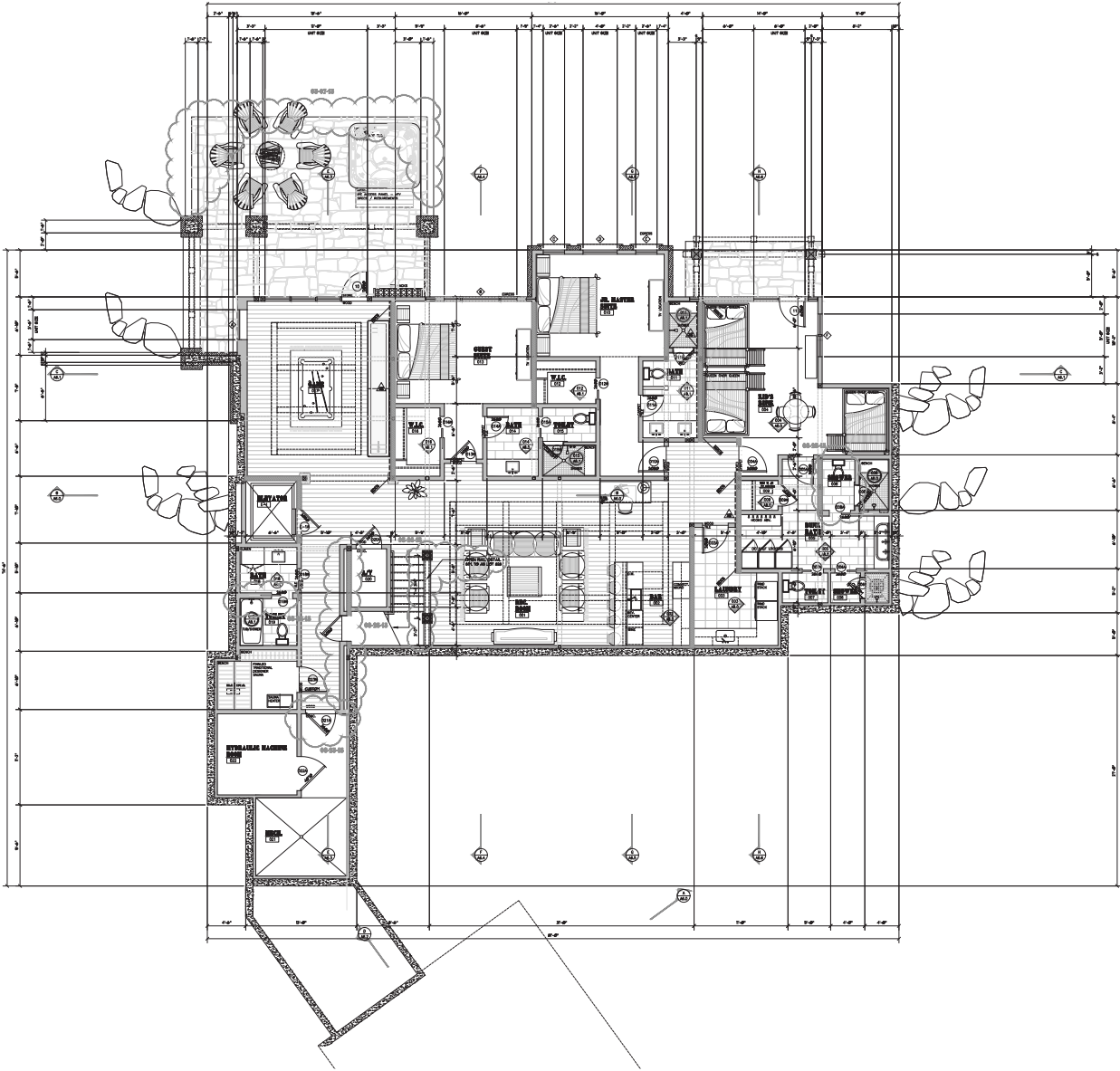


American Spirit 866

7,857 total heated livable square footage

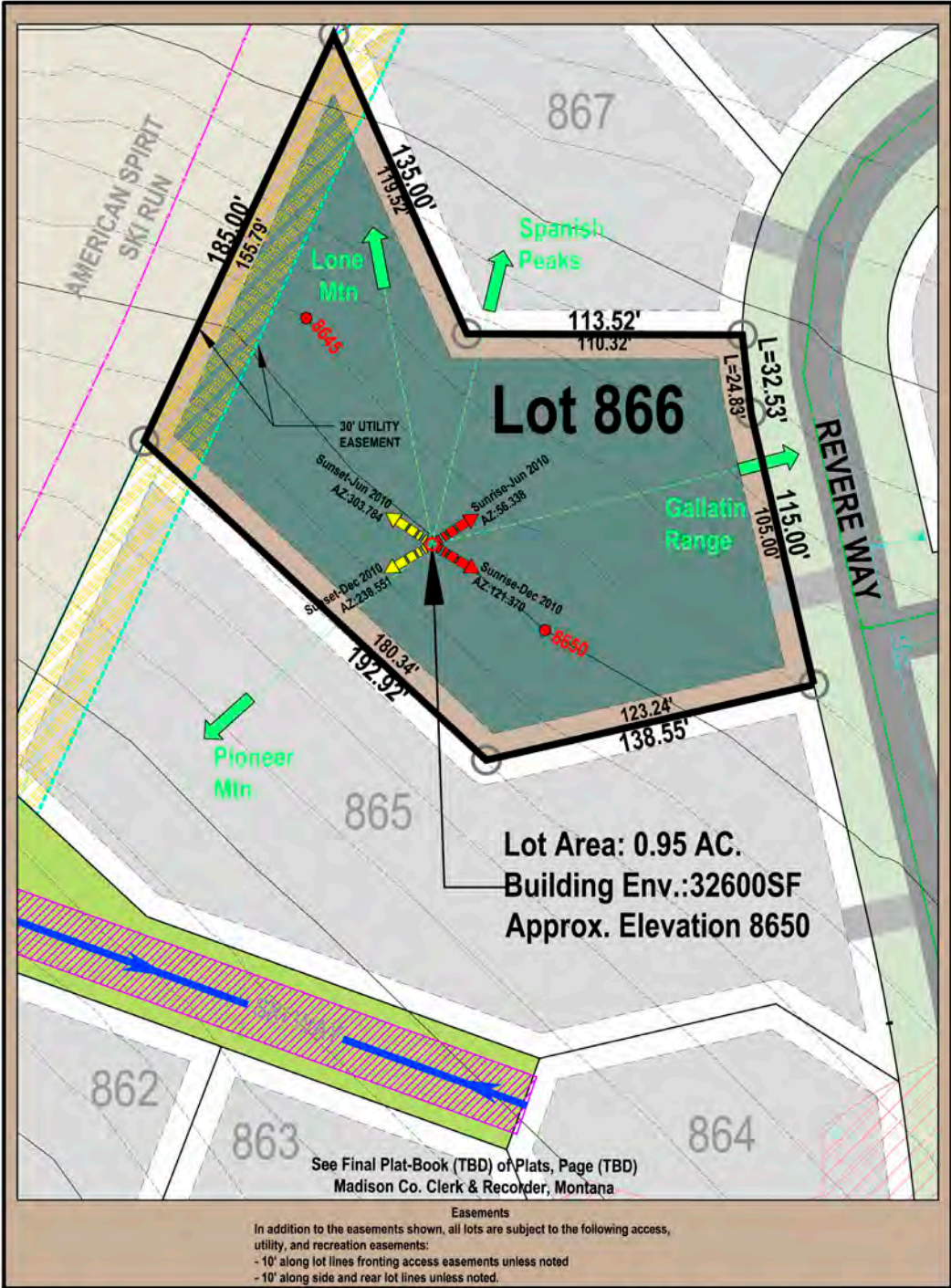
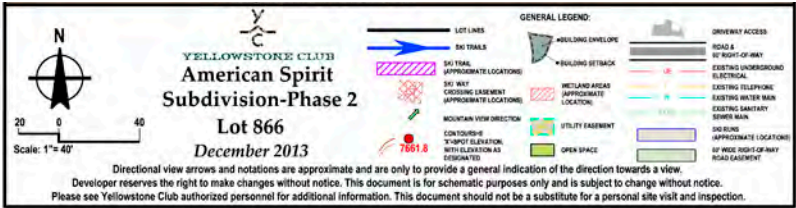
Lower Level

- ♦ Rec Room
- ♦ Wet Bar
- ♦ Game Lounge
- ♦ Sauna
- ♦ Bunk Room
- ♦ Two Guest Suites
- ♦ Laundry Room
- ♦ Terrace with Firepit and Hot Tub



American Spirit 866

Lot Map





LONE PEAK VIEWS



BONUS ROOM WITH LOUNGE AND WET BAR



American Spirit 866 features a clean aesthetic warmed by natural materials. Vistas of Lone Peak are framed throughout the home, inspiring connection to the mountainscape.



MASTER BEDROOM SUITE



MASTER BATHROOM



SOAKING TUB WITH LONE PEAK VIEWS



GUEST BEDROOM



GUEST BATHROOM



OFFICE



GUEST BEDROOM SUITE



ELEVATOR



GAME ROOM



SAUNA



WET BAR



BUNK ROOM



With a prime location on the American Spirit skiway, this alpine retreat offers a short ski to the Rainbow Lodge, an après favorite for dining and relaxation.











HOT TUB



SKI-IN SKI-OUT





YELLOWSTONE CLUB®

For more information about this property and its pricing please contact YC Realty.

(888) 700-7748 ♦ (406) 995-4900 ♦ ycsales@yellowstoneclub.com

P.O. Box 161097 ♦ Big Sky, Montana 59716

www.yellowstoneclub.com

All information deemed reliable, but not guaranteed. All acreages and square footages are estimates. The purchase of a home or homesite does not include membership in Yellowstone Club, or any right to use the private club facilities. Ownership of a home/homesite includes an obligation to pay assessments to a property owner's association. Please ask a sales associate for details. Photographs are representational of the approximate view corridors from the home. Livable square footages listed in this marketing piece are based upon the calculation of only the heated and livable areas within the exterior walls of the property and said square footages are deemed reliable, but not guaranteed. All acreages and square footages are estimates and are provided by the Seller or his designated representative; these measurements should not be a substitute for one's own evaluation and investigation. Ski accessibility is a relative term and can have different implications and meanings depending on the individual. One should investigate fully the property as it relates to its potential ski access and determine for themselves the degree of ski access the property might have or be developed. Buyer acknowledges and agrees that neither the Seller, the Broker, the Sales Associate nor any other real estate representative of the Yellowstone Club or its related affiliates have made any warranties or representations upon which Buyer has relied concerning the ski-in ski-out accessibility of the property. The determination of the level of ski access that a property might have will be the Buyers sole determination.