



# American Spirit 809

15 Constitution Way









OPEN FLOOR PLAN



ENTRYWAY





FOYER



DINING ROOM AND GREAT ROOM



# American Spirit 809

Nestled atop Pioneer Mountain, the American Spirit neighborhood welcomes Yellowstone Club Members to a vibrant ski-in, ski-out community. Surrounded by breathtaking views from Lone Peak to the Spanish Peaks, Members enjoy exclusive access to Private Powder® skiing right from their doorstep. Within walking distance of Rainbow Lodge's fitness center, pool, hot tub, and restaurant—and just a short drive from state-of-the-art Club amenities—this neighborhood offers an elevated mountain lifestyle filled with adventure and camaraderie. At 15 Constitution Way, contemporary design meets western luxury in a refined mountain retreat. Dark wood accents contrast with a sleek white palette, creating an elegant yet inviting atmosphere. The open-concept great room fosters social gatherings, where sloping ceilings and expansive windows draw in natural light. A wood-burning fireplace adds warmth, while a game table provides entertainment for all ages. The modern kitchen, featuring high-end appliances and a marble island, seamlessly connects to the formal dining area. Outside, a covered terrace with a fireplace and hot tub offers year-round enjoyment, perfect for summer barbecues and après-ski relaxation. A mudroom with ski storage ensures effortless transitions from the slopes.

The primary suite, located off the great room, exudes tranquility with its private terrace, glowing fireplace, and airy ambiance. A spacious walk-in closet and spa-like en-suite bathroom, complete with a soaking tub, dual vanity, and walk-in shower, offer ultimate comfort.

Upstairs, additional bedrooms, an office, and a family room create a welcoming space for guests. The junior primary suite boasts a plush bed, daybed, and private terrace, filling the room with fresh mountain air. Its en-suite bathroom features a soaking tub and walk-in shower. Each guest bedroom includes a walk-in closet and en-suite, one with stunning views of Lone Peak. A dedicated laundry room adds convenience. The cozy family room is ideal for gatherings, while the bunk room, with three sets of bunks, comfortably sleeps six, complete with an en-suite and walk-in closet. The lower level offers even more entertainment, featuring a lively living room with plush seating, a billiards room, and a sophisticated lounge with a wet bar. A second bunk room includes an office, ample storage, and an en-suite bathroom with a dual-faucet sink, soaking tub, and walk-in shower.

An unparalleled retreat in Montana's stunning landscape, the American Spirit neighborhood at Yellowstone Club delivers world-class luxury and adventure for generations to come.

🏠 .47 acre lot  
🛀 8 bath  
🛏 6 bed

- ◆ 6,784 square feet
- ◆ 8,488 approximate elevation
- ◆ 4 bedrooms + 2 bunkrooms
- ◆ 7 bathrooms + 1 powder room
- ◆ 2 car garage
- ◆ Ski-in/ski-out access via Lodge Lift, Lake Lift, and American Spirit Lift
- ◆ Striking vistas of Lone Peak, Pioneer Mountain, and the Spanish Peaks
- ◆ Walking distance to Rainbow Lodge and close proximity to base area amenities

*This residence is located within Yellowstone Club, a 15,200 acre private, gated community located in Big Sky, Montana. Yellowstone Club is the world's only private ski and golf community, encompassing thousands of acres of private skiing along with a championship golf course designed by Tom Weiskopf. Additionally, whether looking to savor spectacular mountain panoramas, explore the vast wilderness or enjoy high-quality amenities, Yellowstone Club offers everything from fly fishing, hiking and biking trails to fine dining and spa services. Professional SnowSports, golf and outdoor recreation programs, along with dedicated children's activities, round out the unique Montana experience that is Yellowstone Club.*

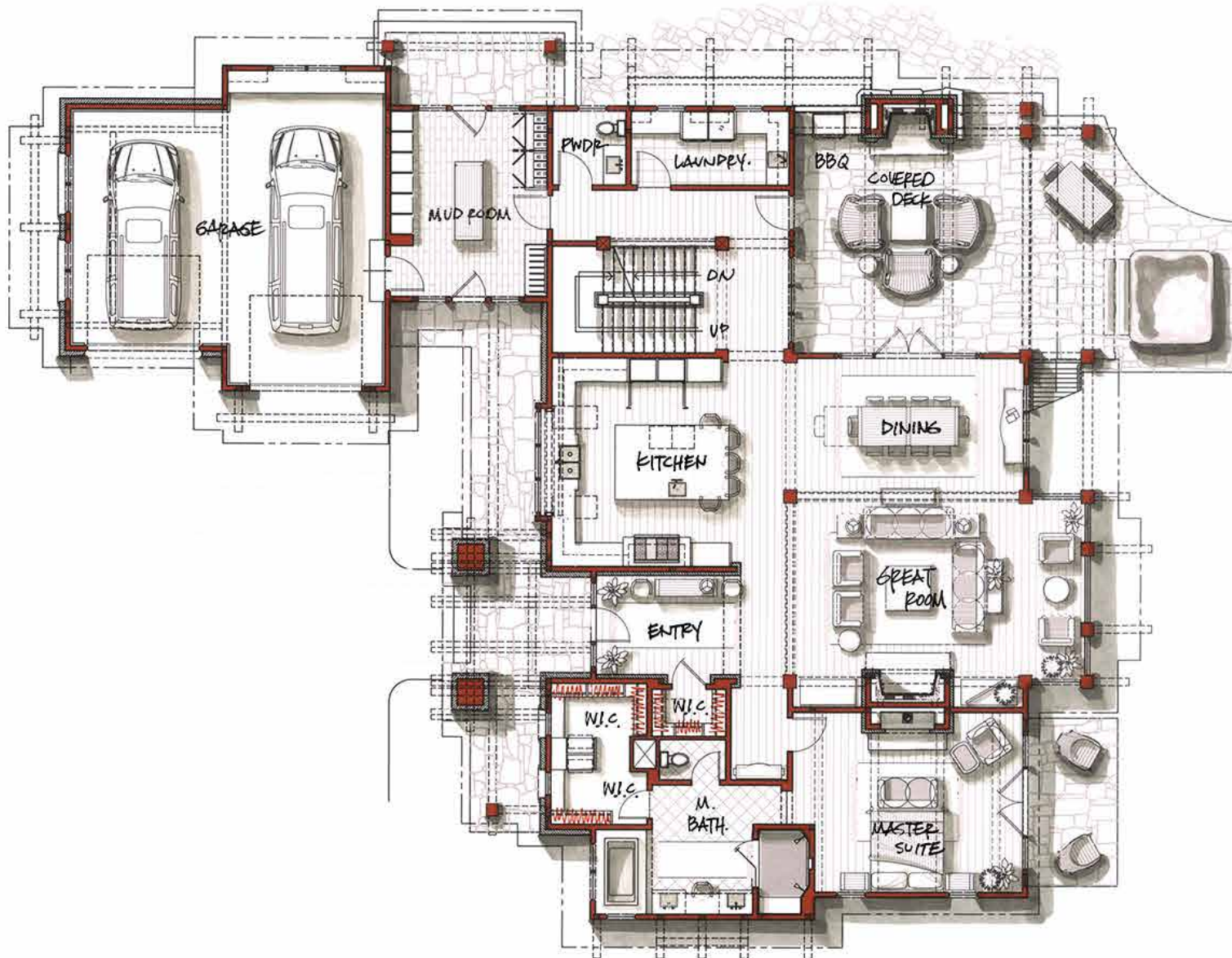


# American Spirit 809

6,784 total heated livable square footage

## Main Level

- ◆ Mud Room
- ◆ Great Room
- ◆ Kitchen
- ◆ Dining Room
- ◆ Powder Room
- ◆ Laundry Room
- ◆ Master Suite with Patio
- ◆ 2-Car Garage
- ◆ Patio
- ◆ Hot Tub



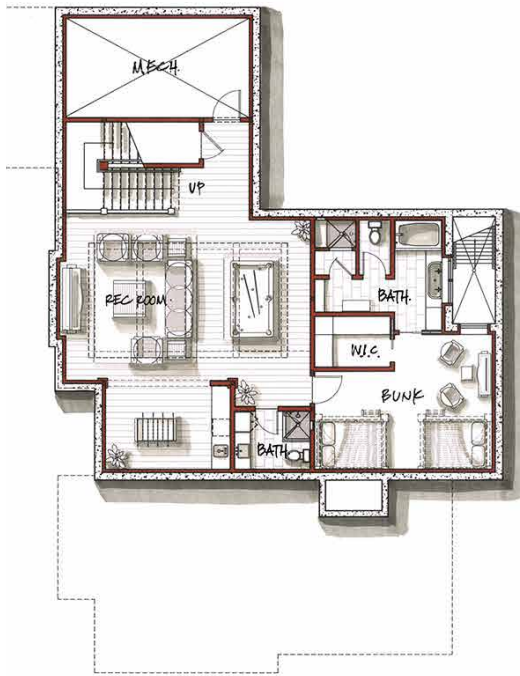


# American Spirit 809

6,784 total heated livable square footage

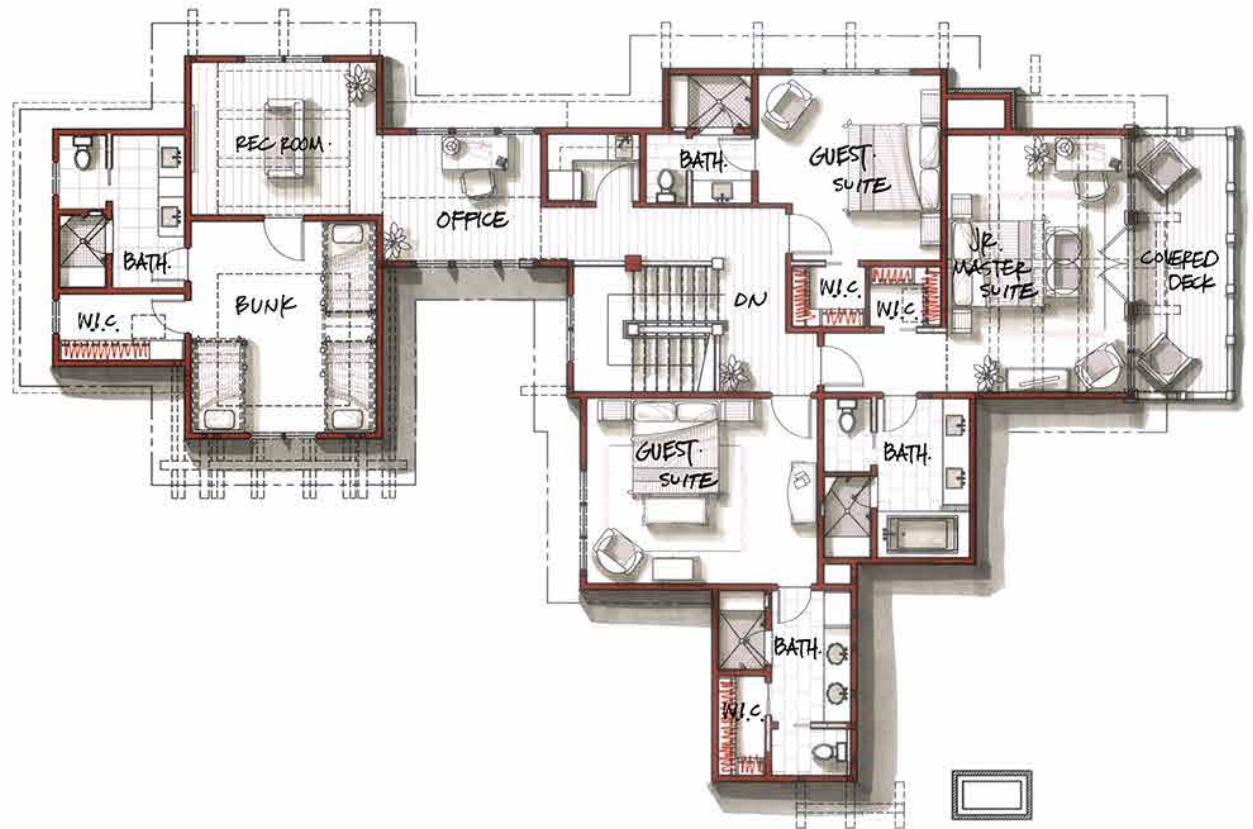
## Lower Level

- ◆ Rec Room
- ◆ Bunk Room Suite
- ◆ Wet Bar



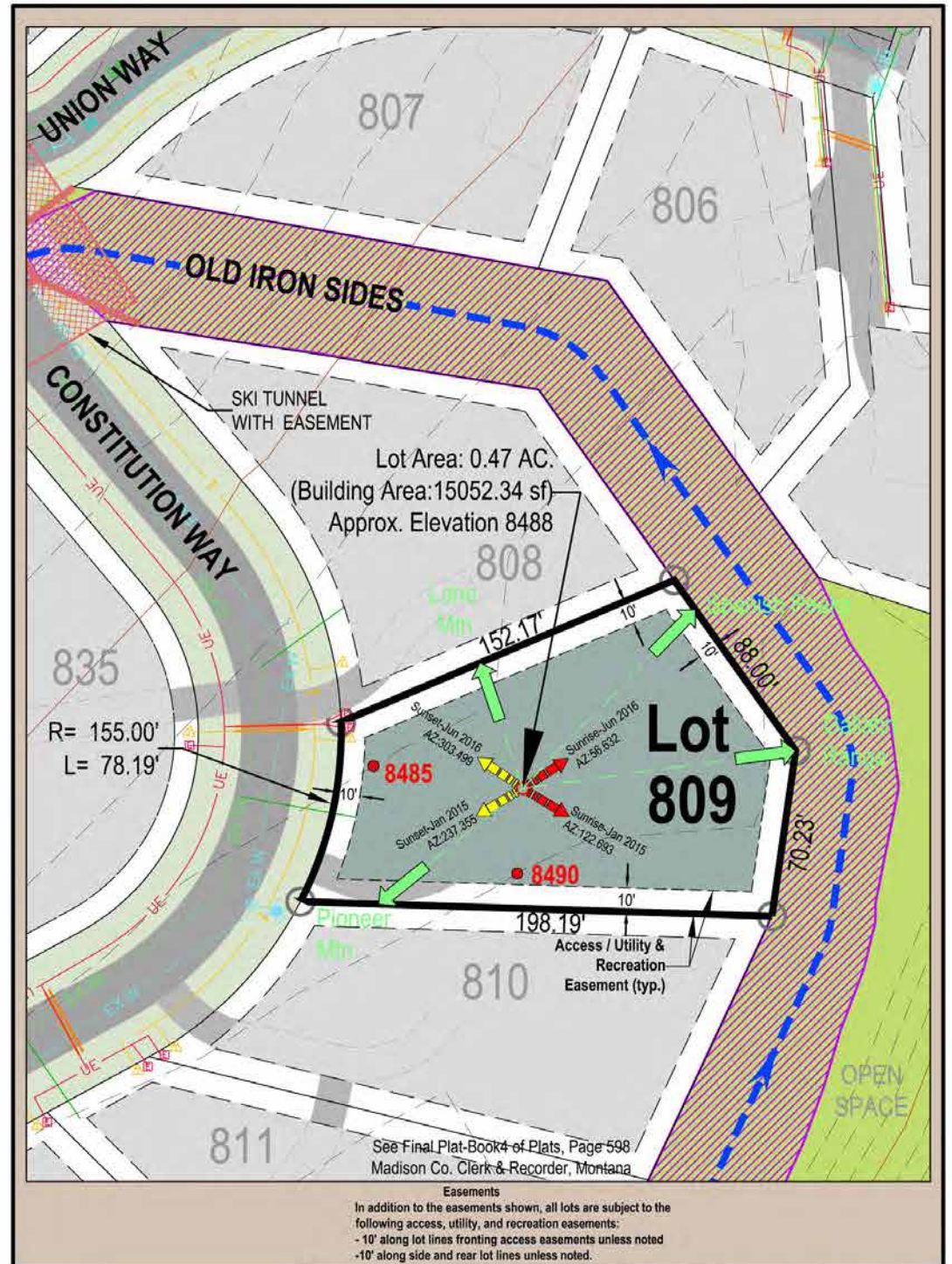
## Upper Level

- ◆ Bunk Room Suite
- ◆ Rec Room
- ◆ Office
- ◆ Guest Suites
- ◆ Junior Master Suite with Deck





8 — **YELLOWSTONE CLUB®** ♦ American Spirit 809

[illegible]







KITCHEN



KITCHEN ISLAND WITH ADDITIONAL SEATING





*An unparalleled retreat in Montana's stunning landscape, the American Spirit neighborhood at Yellowstone Club delivers world-class luxury and adventure for generations to come.*



MASTER SUITE



MASTER SUITE VANITY





MASTER SUITE BATHROOM



JUNIOR MASTER SUITE





JUNIOR MASTER SUITE BATHROOM



GUEST BEDROOM



OFFICE



SITTING/MEDIA AREA



LAUNDRY ROOM



REC ROOM



BUNK ROOM



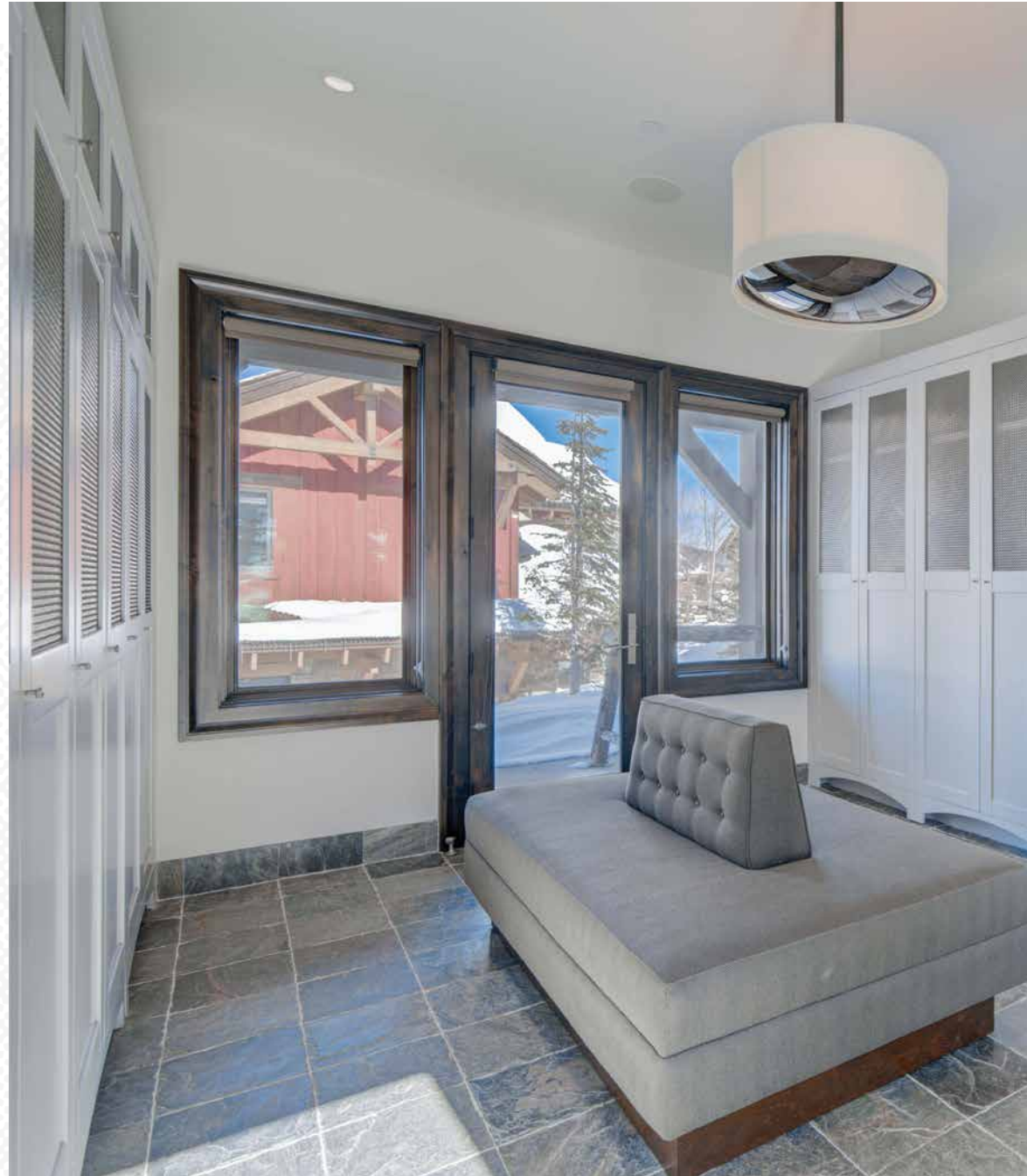
BUNK ROOM BATHROOM







*“A mudroom  
with ski storage  
ensures effortless  
transitions from  
the slopes.”*



SKI LOCKER ROOM





LOWER LEVEL WET BAR



♦ Pinstripe Alley

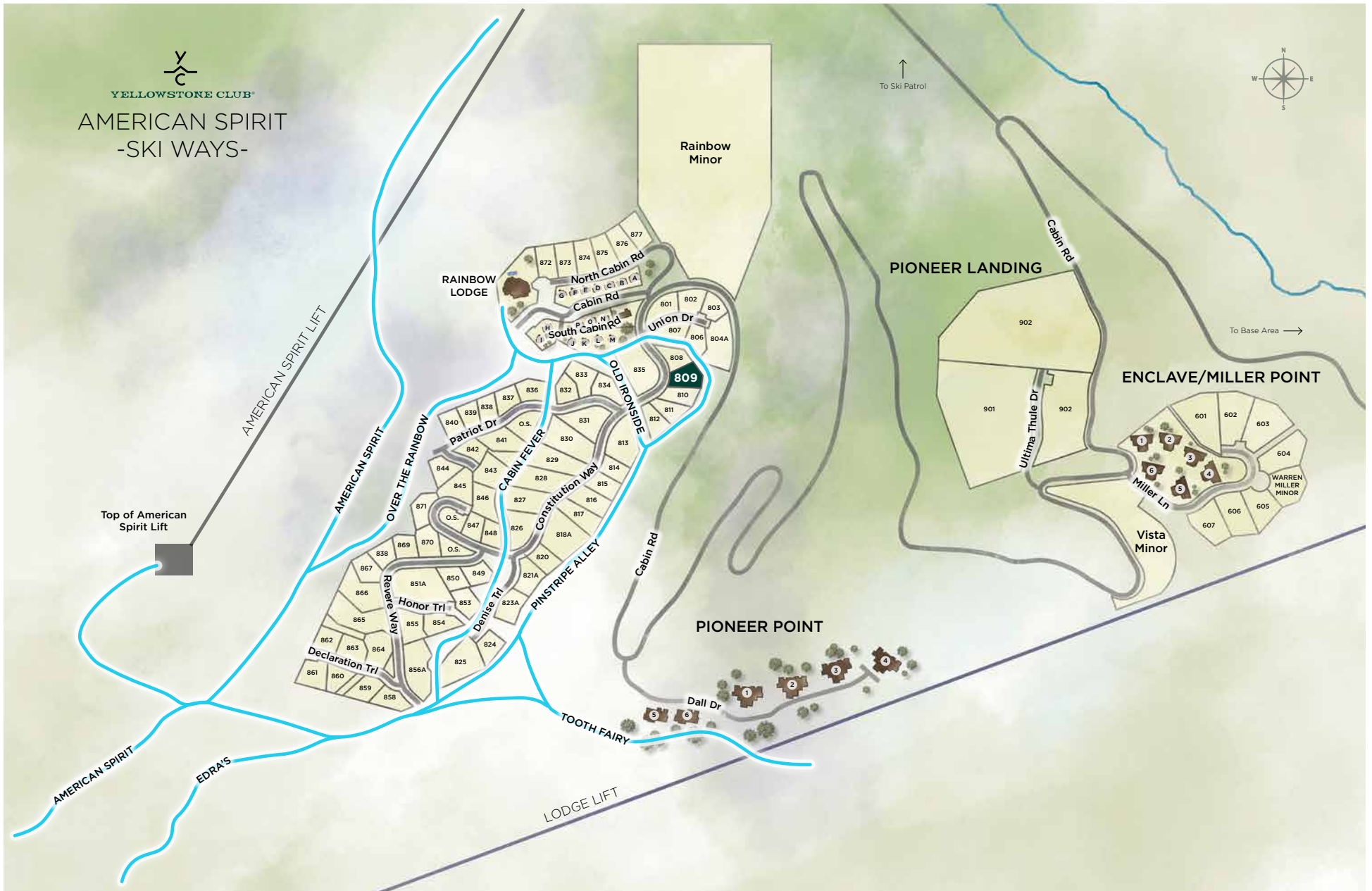






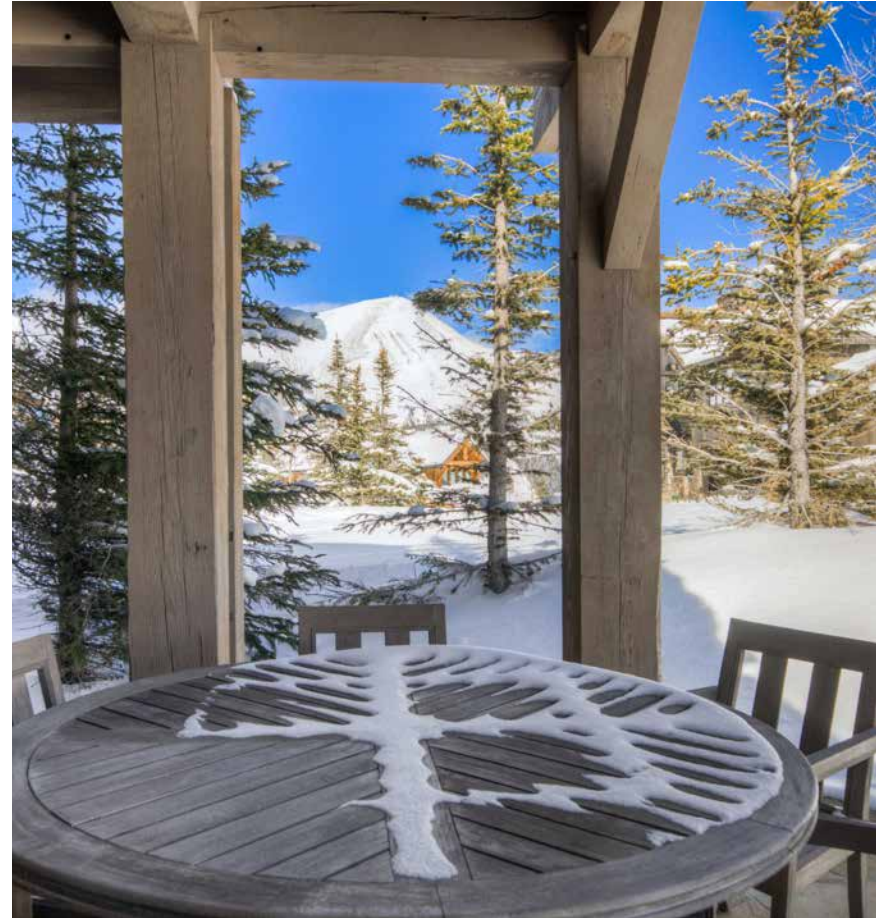
YELLOWSTONE CLUB®

# AMERICAN SPIRIT -SKI WAYS-





PATIO FIREPLACE AND BARBECUE



PATIO VIEWS









**YELLOWSTONE CLUB®**

For more information about this property and its pricing please contact YC Realty.

(888) 700-7748 ♦ (406) 995-4900 ♦ [ycsales@yellowstoneclub.com](mailto:ycsales@yellowstoneclub.com)  
P.O. Box 161097 ♦ Big Sky, Montana 59716

[www.yellowstoneclub.com](http://www.yellowstoneclub.com)

All information deemed reliable, but not guaranteed. All acreages and square footages are estimates. The purchase of a home or homesite does not include membership in Yellowstone Club, or any right to use the private club facilities. Ownership of a home/homesite includes an obligation to pay assessments to a property owner's association. Please ask a sales associate for details. Photographs are representational of the approximate view corridors from the home. Livable square footages listed in this marketing piece are based upon the calculation of only the heated and livable areas within the exterior walls of the property and said square footages are deemed reliable, but not guaranteed. All acreages and square footages are estimates and are provided by the Seller or his designated representative; these measurements should not be a substitute for one's own evaluation and investigation. Ski accessibility is a relative term and can have different implications and meanings depending on the individual. One should investigate fully the property as it relates to its potential ski access and determine for themselves the degree of ski access the property might have or be developed. Buyer acknowledges and agrees that neither the Seller, the Broker, the Sales Associate nor any other real estate representative of the Yellowstone Club or its related affiliates have made any warranties or representations upon which Buyer has relied concerning the ski-in ski-out accessibility of the property. The determination of the level of ski access that a property might have will be the Buyers sole determination.