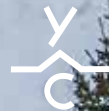


ANDESITE RIDGE | 5

71 Yellowstone Club Trail



YELLOWSTONE CLUB

CIRCULAR DRIVEWAY
ENTRANCE WITH ISLAND



- ANDESITE RIDGE 5 -

71 YELLOWSTONE CLUB TRAIL

Andesite Ridge 5 is tucked into a very special corner of the Yellowstone Club. Around the bend from the main gatehouse, a small drive curves off to the south, revealing this expansive, ranch-like property. Situated on over 7.5 acres, this custom residence feels expansive and private, and is expertly sited to capture views of the Club, Eglise and Pioneer Mountains, and the larger Gallatin Range. Owners of this home will enjoy the quiet beauty of each season: sun setting over nearby peaks, unfolding pops of color in the springtime, and long summer days that seems to never end.

This stunning custom residence is situated atop a gentle plateau, with land that drops away to reveal massive territorial views. With its over 7,500 square feet, Andesite Ridge 5 offers space for family and guests to spread out and relax into the environment. This home's unique layout features most living spaces on the main level, with thoughtful separations between public and private areas.

From the stone entryway, the gaze is drawn forward to the relaxed elegance of the great room, where pinnacled windows frame magnificent southern views. The massive stone fireplace grounds the space with a warm ambiance—this will be the favorite room for evening gatherings. Other main level gathering spaces include the gourmet kitchen, separate family room, dining room, and custom curved bar. The main level bedroom suites are creatively split into separate wings of the home. On the southern end, the master suite plus adjacent office offer the perfect owner's retreat, with its corner fireplace, walk-out deck, and hand-stacked stonework throughout. The northern wing hosts two additional bedroom suites and also provides access to the spacious mudroom and three-car garage.

The open staircase, set against a wall of windows, climbs to the second level. The entire upper level has a warm, cabin-like feel thanks to sloped, wood-clad ceilings, timber posts and beams, and plush furnishings. Friends will enjoy the billiards table, family room, and bar area, while the bunk room provides the perfect spot for kids or overflow guests

From its perch on Yellowstone Club Trail, Andesite Ridge 5 feels as though it's tucked into a private wilderness—owners will be just as likely to see a meandering moose as a passing car. But the plentiful amenities of the Warren Miller Lodge are only a short drive away, making it easy to enjoy fine dining, youth recreation, concierge services, unbeatable skiing, and more at the nearby base area.



STAIRCASE

FOYER



GREAT ROOM



- ANDESITE RIDGE 5 -

71 YELLOWSTONE CLUB TRAIL

FEATURES

7.56 acres

7,560 square feet

4 bedrooms

6 bathrooms

3-stall garage

Views of Eglise, Pioneer, Gallatin Range

Close proximity to main gatehouse,
short drive to base area

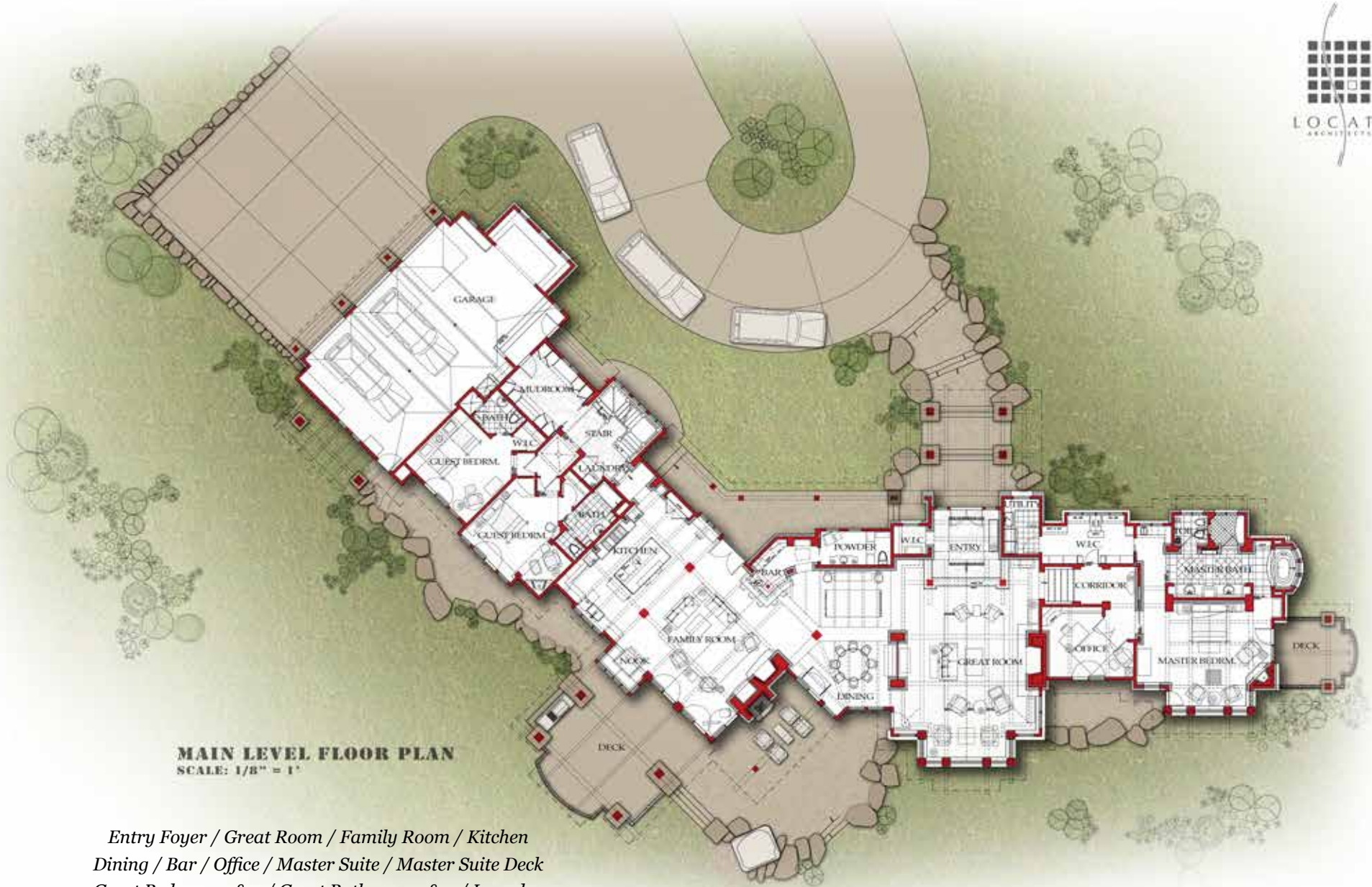
This residence is located within Yellowstone Club, a 15,200 acre private, gated community located in Big Sky, Montana. Yellowstone Club is the world's only private ski and golf community, encompassing thousands of acres of private skiing along with a championship golf course designed by Tom Weiskopf. Additionally, whether looking to savor spectacular mountain panoramas, explore the vast wilderness or enjoy high-quality amenities, Yellowstone Club offers everything from fly fishing, hiking and biking trails to fine dining and spa services. Professional SnowSports, golf and outdoor recreation programs, along with dedicated children's activities, round out the unique Montana experience that is Yellowstone Club.

VIEW OF LONE PEAK



- ANDESITE RIDGE 5 -

71 YELLOWSTONE CLUB TRAIL



MAIN LEVEL FLOOR PLAN
SCALE: 1/8" = 1'

*Entry Foyer / Great Room / Family Room / Kitchen
Dining / Bar / Office / Master Suite / Master Suite Deck
Guest Bedroom 1 & 2 / Guest Bathroom 1 & 2 / Laundry
Mud Room / 3-car Garage / Outdoor Fireplace*

- ANDESITE RIDGE 5 -

71 YELLOWSTONE CLUB TRAIL



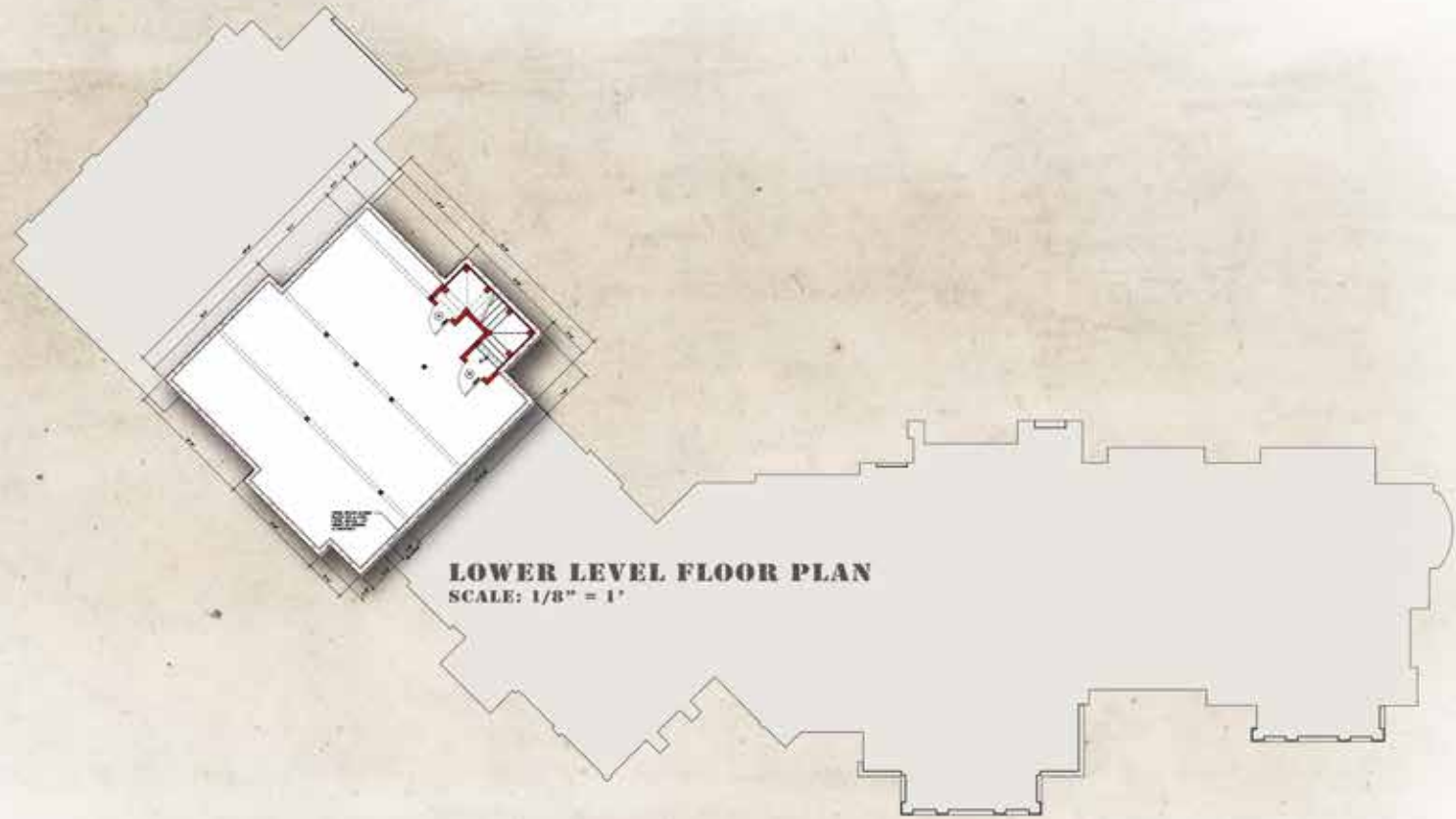
UPPER LEVEL

Media Room / Rec Room / Bar / 2 Decks

Bunk Room / Bathroom / Storage

- ANDESITE RIDGE 5 -

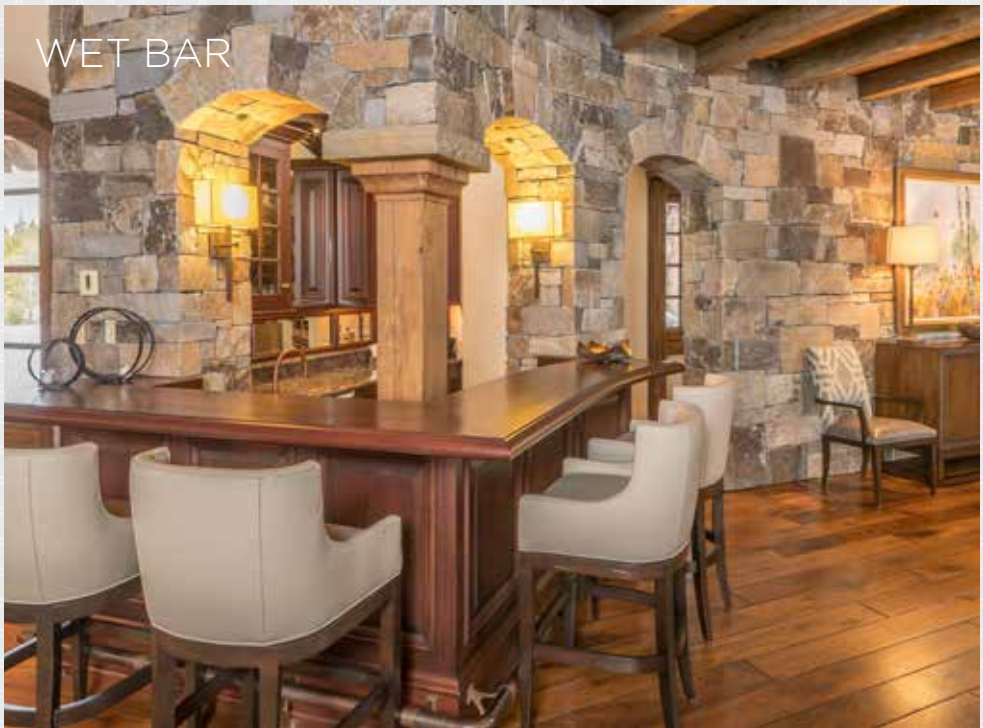
71 YELLOWSTONE CLUB TRAIL



LOWER LEVEL
Mechanical / Storage



OPEN FLOOR PLAN





MASTER BEDROOM

MASTER BATHROOM





MASTER SUITE DETAILS



GUEST BEDROOM 1



GUEST BATHROOM 1



GUEST BEDROOM 2



GUEST BATHROOM 2

GAME ROOM



GAME ROOM LOUNGE



OFFICE



BUNK ROOM



BUNK BATHROOM



MUD ROOM



PATIO OFF THE
LIVING ROOM



CUSTOM STONEMWORK
ON MAIN ENTRANCE



THREE STALL GARAGE





YELLOWSTONE CLUB

For more information about this property and its pricing please contact YC Realty.

(888) 700-7748 | (406) 995-4900 | yccsales@yellowstoneclub.com | P.O. Box 161097 | Big Sky, Montana 59716

www.yellowstoneclub.com

All information deemed reliable, but not guaranteed. All acreages and square footages are estimates. The purchase of a home or homesite does not include membership in Yellowstone Club, or any right to use the private club facilities. Ownership of a home/homesite includes an obligation to pay assessments to a property owner's association. Please ask a sales associate for details. Photographs are representational of the approximate view corridors from the home. Livable square footages listed in this marketing piece are based upon the calculation of only the heated and livable areas within the exterior walls of the property and said square footages are deemed reliable, but not guaranteed. All acreages and square footages are estimates and are provided by the Seller or his designated representative; these measurements should not be a substitute for one's own evaluation and investigation. Ski accessibility is a relative term and can have different implications and meanings depending on the individual. One should investigate fully the property as it relates to its potential ski access and determine for themselves the degree of ski access the property might have or be developed. Buyer acknowledges and agrees that neither the Seller, the Broker, the Sales Associate nor any other real estate representative of the Yellowstone Club or its related affiliates have made any warranties or representations upon which Buyer has relied concerning the ski-in ski-out accessibility of the property. The determination of the level of ski access that a property might have will be the Buyers sole determination.