

# ALPINE GREENS

6 Mulligan Road

| 735



YELLOWSTONE CLUB

PHOTO OF A SIMILARLY DESIGNED GREAT ROOM



# - ALPINE GREENS 735 -

6 MULLIGAN ROAD

Alpine Greens 735, located at 6 Mulligan Road, is a custom residence in the ideal setting for unparalleled views, privacy, and golf course access. Situated between open space to the southeast and Hole 9 of YC's Tom Weiskopf-designed golf course to the northwest, this home's location ensures privacy coupled with prime access to the golf Clubhouse and activities. From Alpine Greens 735, homeowners will revel in expansive mountain vistas including those of Spanish Peaks, Lone Peak, and Pioneer Mountain. A golfer's dream, the location of Alpine Greens 735 is also ideal for those seeking access to Yellowstone Club's thousands of acres of private skiing and base area amenities, all of which members can access via a short drive.

This custom residence features the most current styles in mountain architecture: crisp, clean lines that allow the beauty of the natural landscape to permeate each room. On the main level, huge windows echo the shed pitch of the roof, creating an expanding skyline view and a lofty ambiance to the space. With over 2,700 square feet, this level flows effortlessly between the gourmet kitchen, dining room, and great room; the eastern wall of glass opens to the comfortable outdoor living room. The main level master suite frames spectacular views and offers a peaceful sanctuary. Throughout, warm neutral furnishings, wood accents, and dark metal work showcase the many custom touches.

This custom residence has accommodations for even the largest gatherings, thanks to its additional bedroom suites: four bedrooms, each with private bathroom, are found on the lower level; a junior suite sits amid jaw-dropping views on the home's upper level. With a grand total of over 6,500 square feet of heated, livable space, Alpine Greens 735 is a wonderful setting from which to embark on countless Montana adventures. Just as delightful, perhaps, are the days spent tucked into this space, watching the light change on the mountains and basking in the warmth of a regal stone fireplace.

# - ALPINE GREENS 735 -

6 MULLIGAN ROAD

## FEATURES

.79 Acres

6 bedrooms

7 bathrooms + 1 powder room

6,508 heated, livable square footage

3 car garage

Approximate elevation 7,565 feet

View of Spanish Peaks, Lone Peak, Pioneer Mountain

Immediate access to YC's golf course Clubhouse

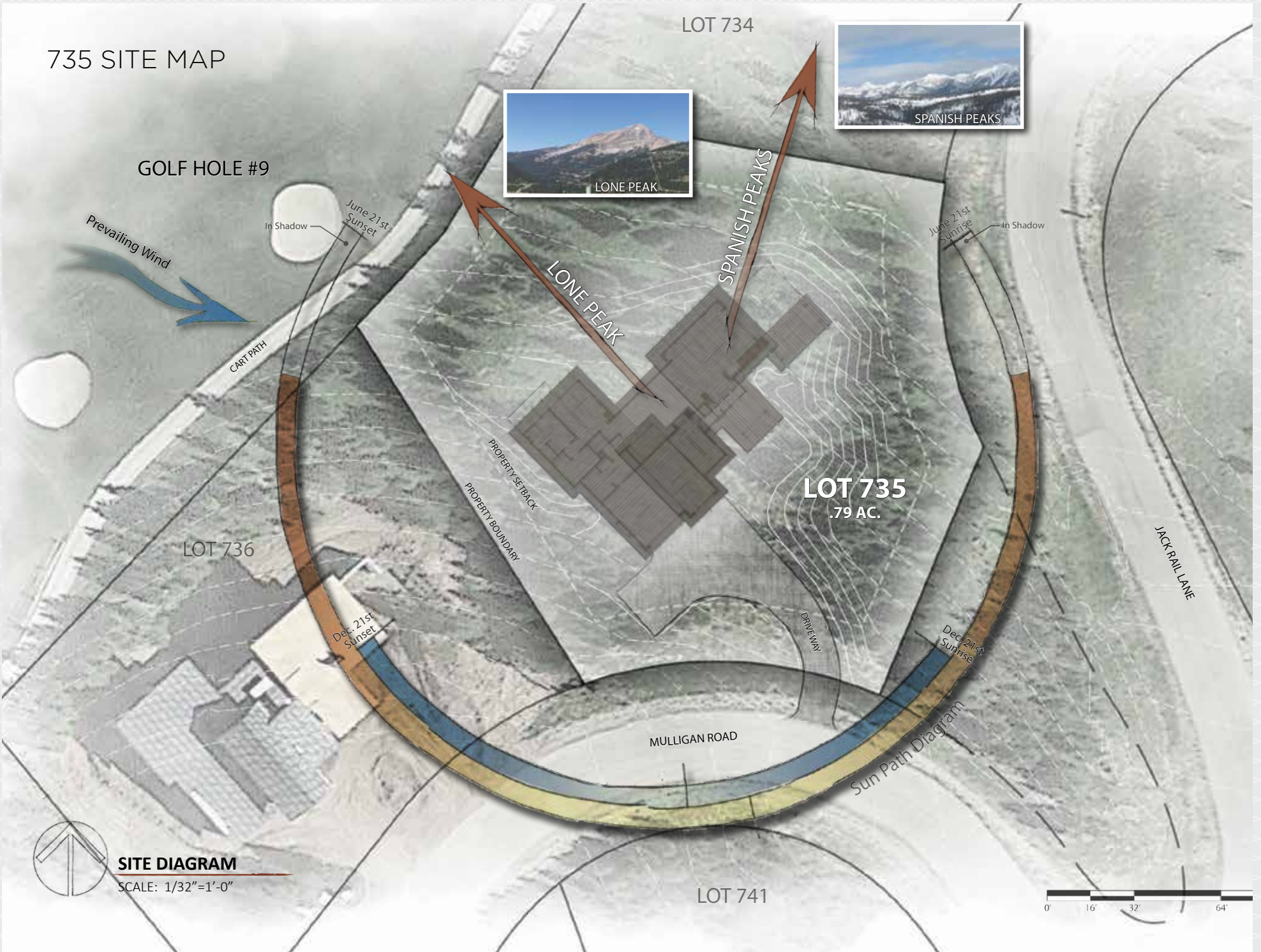
Unfurnished

This residence is located within Yellowstone Club, a 15,200 acre private, gated community located in Big Sky, Montana. Yellowstone Club is the world's only private ski and golf community, encompassing thousands of acres of private skiing along with a championship golf course designed by Tom Weiskopf. Additionally, whether looking to savor spectacular mountain panoramas, explore the vast wilderness or enjoy high-quality amenities, Yellowstone Club offers everything from fly fishing, hiking and biking trails to fine dining and spa services. Professional SnowSports, golf and outdoor recreation programs, along with dedicated children's activities, round out the unique Montana experience that is Yellowstone Club.

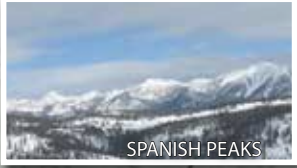
## EXTERIOR RENDERING



# 735 SITE MAP



LOT 734



SPANISH PEAKS



LONE PEAK

GOLF HOLE #9

Prevailing Wind

CART PATH

In Shadow

June 21st  
Sunset

LONE PEAK

SPANISH PEAKS

June 21st  
Sunrise

In Shadow

LOT 735  
.79 AC.

PROPERTY SETBACK  
PROPERTY BOUNDARY

LOT 736

Dec 21st  
Sunset

DRIVEWAY

Dec 21st  
Sunrise

JACK RAIL LINE

MULLIGAN ROAD

Sun Path Diagram

LOT 741



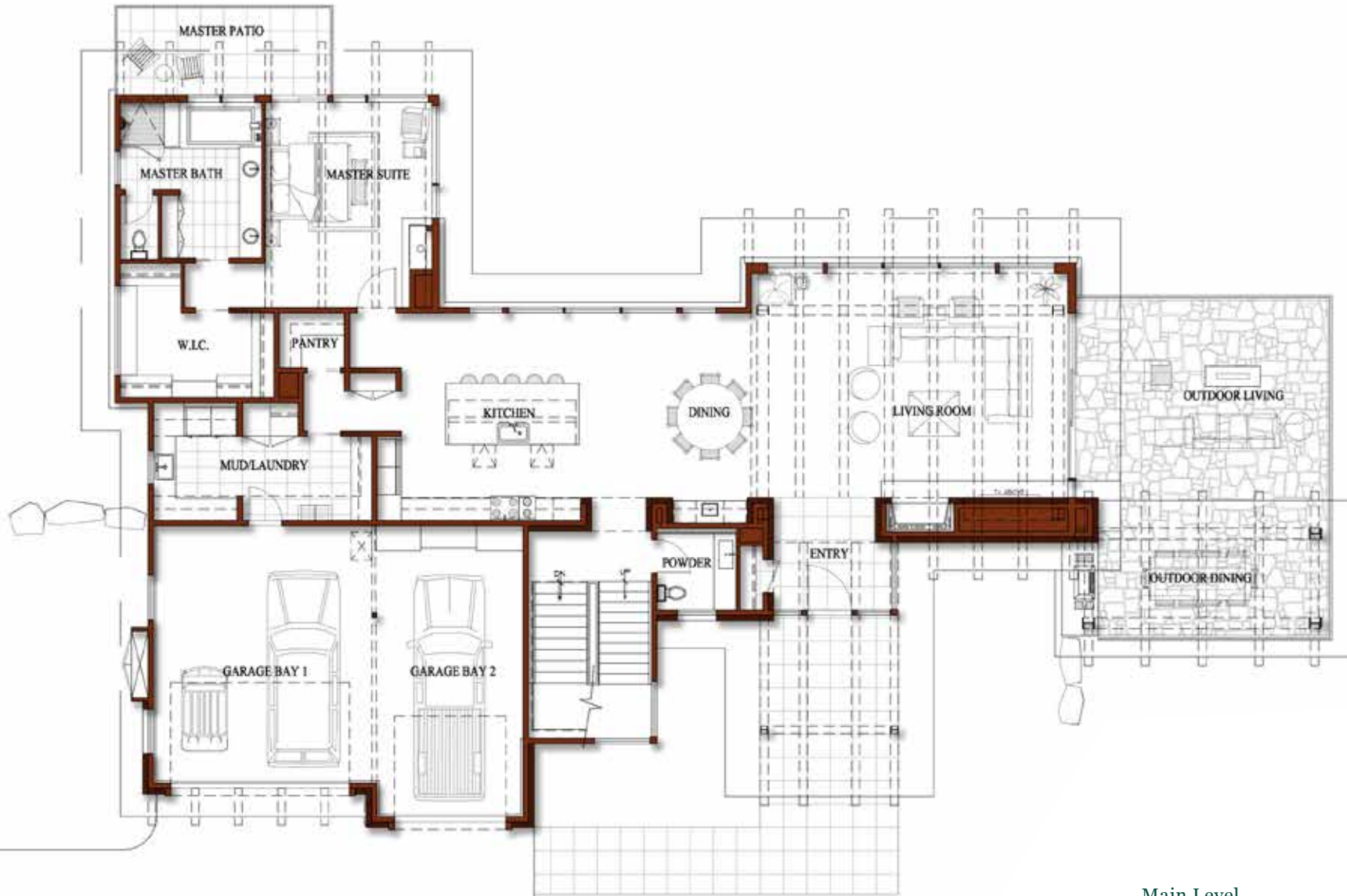
SITE DIAGRAM

SCALE: 1/32"=1'-0"



# - ALPINE GREENS 735 -

6 MULLIGAN ROAD

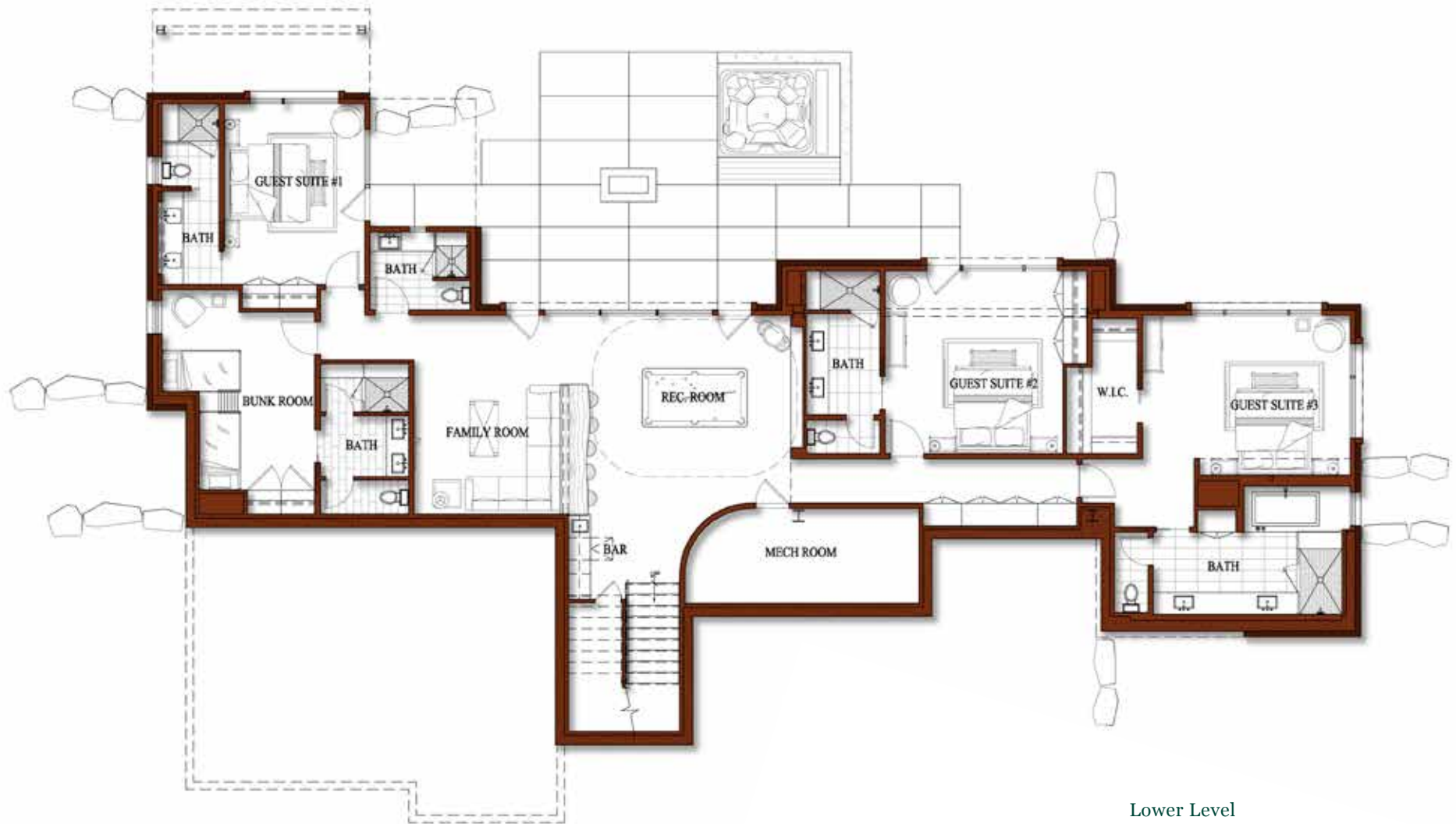


## Main Level

Entry / Living Room / Dining / Kitchen / Powder Room  
Master Suite / Master Bath / Master Patio  
Laundry / Outdoor Living & Dining / 3 Car Garage

# - ALPINE GREENS 735 -

6 MULLIGAN ROAD

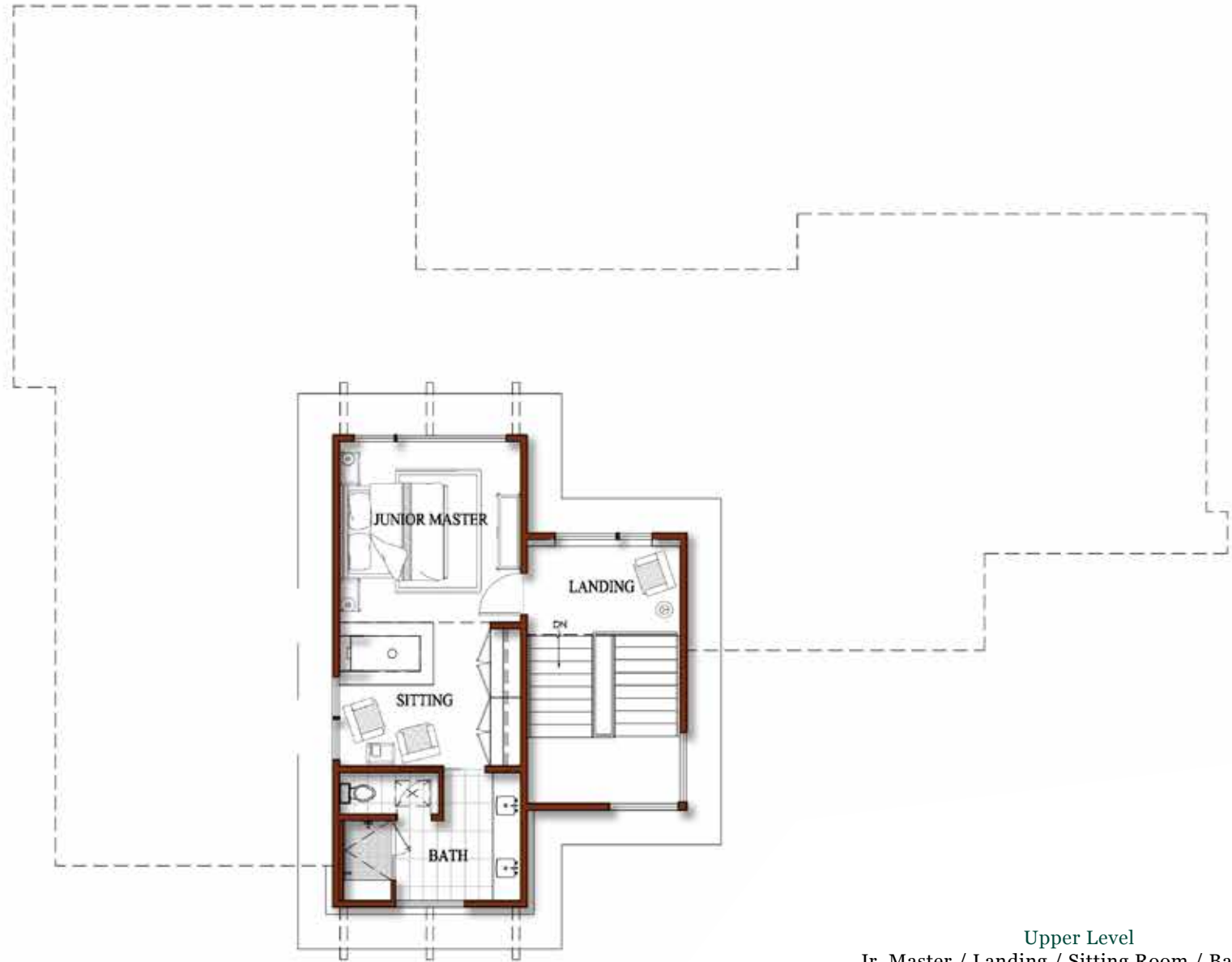


Lower Level

Family Room / Rec Room / Bunk Room / Bunk Bathroom  
Guest Suite 1 + Bath / Guest Suite 2 + Bath / Guest Suite 3 + Bath  
Mechanical Room / Bar

# - ALPINE GREENS 735 -

6 MULLIGAN ROAD



Upper Level  
Jr. Master / Landing / Sitting Room / Bathroom



**THE VILLAGE & BASE AREA**

GONDOLA

EGLISE

**ALPINE GREENS NEIGHBORHOOD MAP**

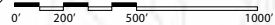


PHOTO OF A SIMILARLY DESIGNED GREAT ROOM



VIEW OF PIONEER RIDGE





## YELLOWSTONE CLUB

For more information about this property and its pricing please contact YC Realty.

(888) 700-7748 | (406) 995-4900 | [ycsales@yellowstoneclub.com](mailto:ycsales@yellowstoneclub.com) | P.O. Box 161097 | Big Sky, Montana 59716

[www.yellowstoneclub.com](http://www.yellowstoneclub.com)

All information deemed reliable, but not guaranteed. All acreages and square footages are estimates. The purchase of a home or homesite does not include membership in Yellowstone Club, or any right to use the private club facilities. Ownership of a home/homesite includes an obligation to pay assessments to a property owner's association. Please ask a sales associate for details. Photographs are representational of the approximate view corridors from the home. Livable square footages listed in this marketing piece are based upon the calculation of only the heated and livable areas within the exterior walls of the property and said square footages are deemed reliable, but not guaranteed. All acreages and square footages are estimates and are provided by the Seller or his designated representative; these measurements should not be a substitute for one's own evaluation and investigation. Ski accessibility is a relative term and can have different implications and meanings depending on the individual. One should investigate fully the property as it relates to its potential ski access and determine for themselves the degree of ski access the property might have or be developed. Buyer acknowledges and agrees that neither the Seller, the Broker, the Sales Associate nor any other real estate representative of the Yellowstone Club or its related affiliates have made any warranties or representations upon which Buyer has relied concerning the ski-in ski-out accessibility of the property. The determination of the level of ski access that a property might have will be the Buyers sole determination. 12/18

