

PINE RIDGE

84 Upper Cedarview Drive

| 324



YELLOWSTONE CLUB

PORTE COCHÈRE

- PINE RIDGE 324 -

84 UPPER CEDARVIEW DRIVE

Montana is known for its open spaces, jagged peaks, and unmatched beauty. It is true that most homes at Yellowstone Club boast incredible views, but none quite as stunning as Cedarview 324, which is shadowed by three prominent peaks – Pioneer Mountain, Lone Peak, and Cedar Mountain.

The three peaks extend to heights ranging from 9,860 to 11,166 feet. Taking this scale into mind, the design of Cedarview has been customized to allow the unbelievable surroundings to ‘enter’ the home. You can feel the mountains’ presence in almost every room. Cedarview is tailored to the Alpine lifestyle, featuring its own private ski access bridge, spanning above the main entrance allowing you and your family to literally ski into the upper level of the home. Skiers have incredible access to miles of Yellowstone Club’s powder-drenched trails and the nearby terrain at Big Sky Resort.

Outside the residence, the rough sawn exterior siding and trim present a classic mountain lodge style. The commanding entrance and porte cochere is connected to the upper ski bridge. Inside, the extraordinary panoramas are enhanced by many unique features. Stone imported from France greets you in the entry, with complementary millwork consisting of reclaimed barnwood and knotty alder doors. A spiral staircase and ornate three station elevator provide access to all levels. Extensive automated lighting, grand stone fireplaces, custom faux painting, ornate doors, and an extensive collection of antiques from around the world provide a perfect setting for relaxing after a day on the slopes.

Ideal for entertaining, the great room, kitchen and dining areas open to each other; enormous windows offer captivating views from every aspect. All countertops feature granite and stone from around the world, and cabinets are custom crafted from a local artisan. The master suite offers perhaps one of the most intimate escapes while still taking advantage of the incredible vistas. A master bath, large walk-in closet and stone fireplace complete this space.

Upstairs, two matching guest rooms with a shared bath, an attic, sitting area and arcade game cove with snack center will give you much needed refuge after your day on the slopes. A lookout area (with more great views!) opens to the ski room, complete with plenty of storage for all your gear. The indoor ski room connects to an additional outdoor ski center that ultimately leads to the private ski bridge.

A guest master suite downstairs includes a private bath and outdoor patio where you can relax and take in the views. The custom bunk room and guest suite provide more space for guests, including two dedicated bathrooms. The large rec room, exercise area, billiards table, wet bar, and state-of-the-art home theatre bar allow all to feel at home, whether relaxing or wanting a little fun competition. Both main and lower levels feature utility rooms and laundry facilities for your convenience. Cedarview wouldn’t be complete without its huge private deck, spanning amongst mature trees creating a sense of privacy, but not taking away from the views.



FOYER



GREAT ROOM



- PINE RIDGE 324 -

84 UPPER CEDARVIEW DRIVE

FEATURES

5 Bedrooms + Bunk Room

5 Bathrooms + 2 Powder Rooms

9,174 total heated livable square footage

4.31 Acres

Grand entrance with porte cochere

Access to skiing via a private ski bridge

Indoor and outdoor ski rooms

Large rec room, exercise area and wet bar

Additional guest suite with dedicated bath

Ornate three station elevator

Three car garage

Home Theater

Hot tub patio

Arcade game cove

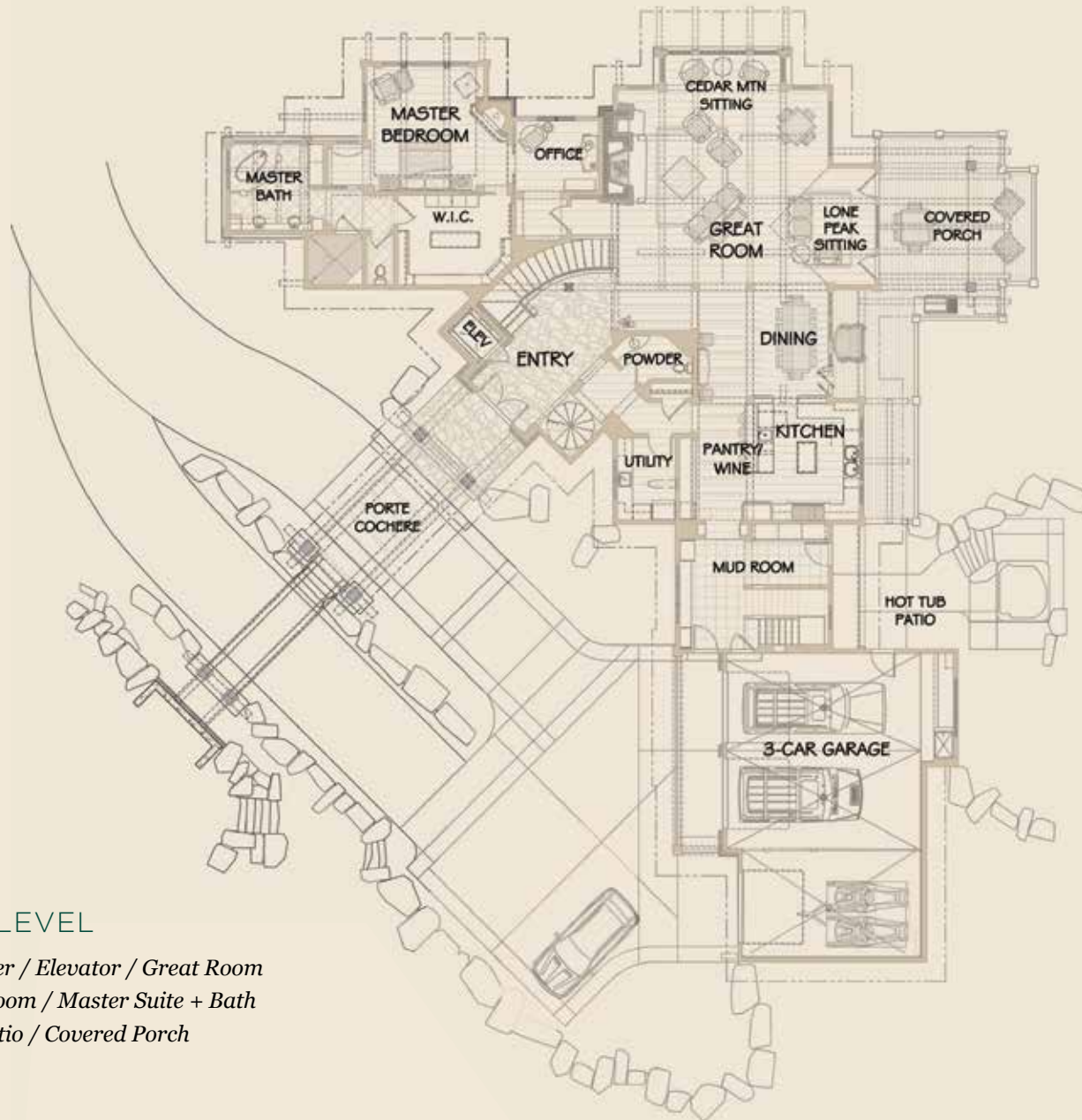
This residence is located within Yellowstone Club, a 15,200 acre private, gated community located in Big Sky, Montana. Yellowstone Club is the world's only private ski and golf community, encompassing thousands of acres of private skiing along with a championship golf course designed by Tom Weiskopf. Additionally, whether looking to savor spectacular mountain panoramas, explore the vast wilderness or enjoy high-quality amenities, Yellowstone Club offers everything from fly fishing, hiking and biking trails to fine dining and spa services. Professional SnowSports, golf and outdoor recreation programs, along with dedicated children's activities, round out the unique Montana experience that is Yellowstone Club.



OPEN FLOOR PLAN

- PINE RIDGE 324 -

9,174 TOTAL HEATED LIVABLE SQUARE FOOTAGE

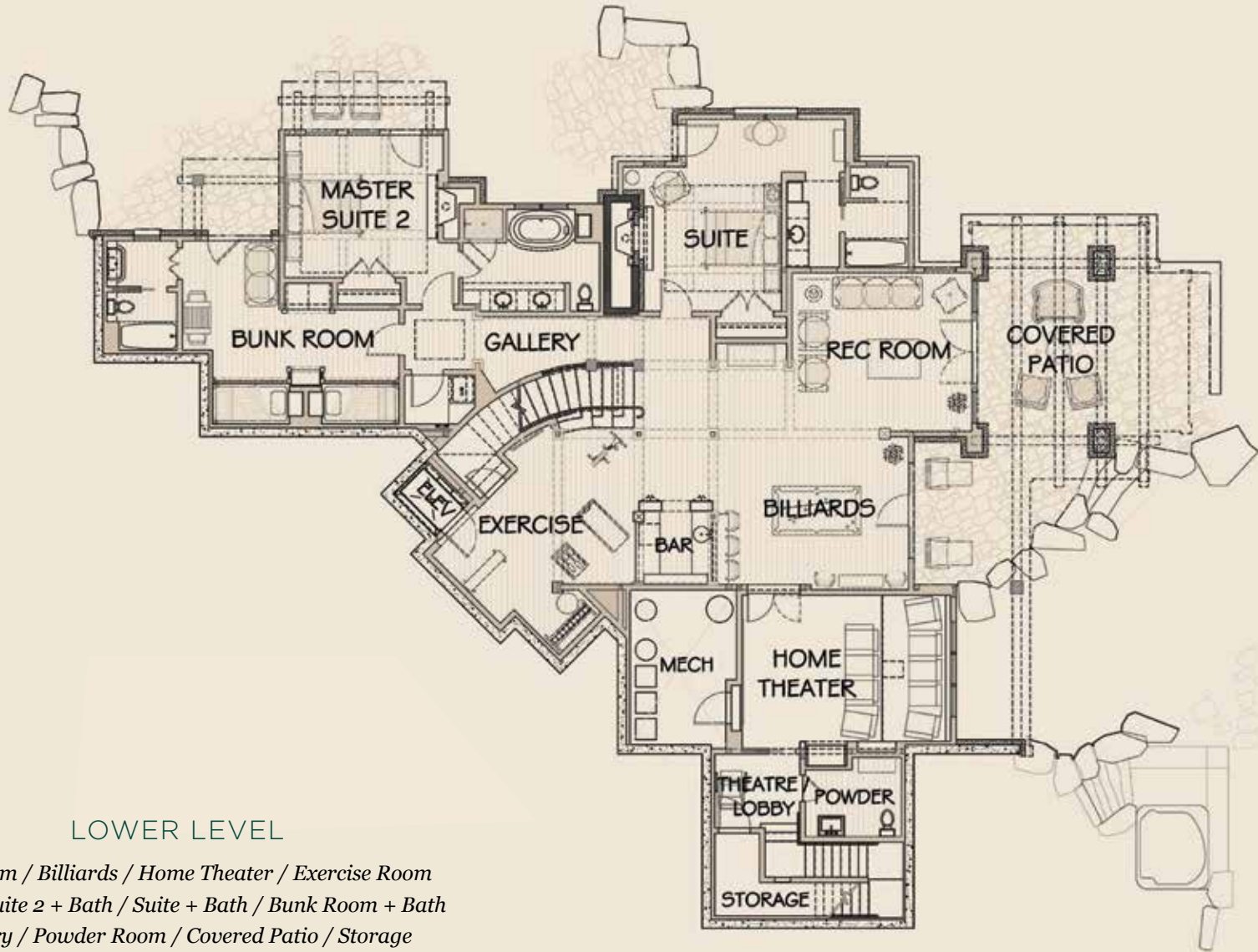


MAIN LEVEL

*Porte Cochere / Entry Foyer / Elevator / Great Room
Dining / Kitchen / Mud Room / Master Suite + Bath
Office / Hot Tub Patio / Covered Porch*

- PINE RIDGE 324 -

9,174 TOTAL HEATED LIVABLE SQUARE FOOTAGE

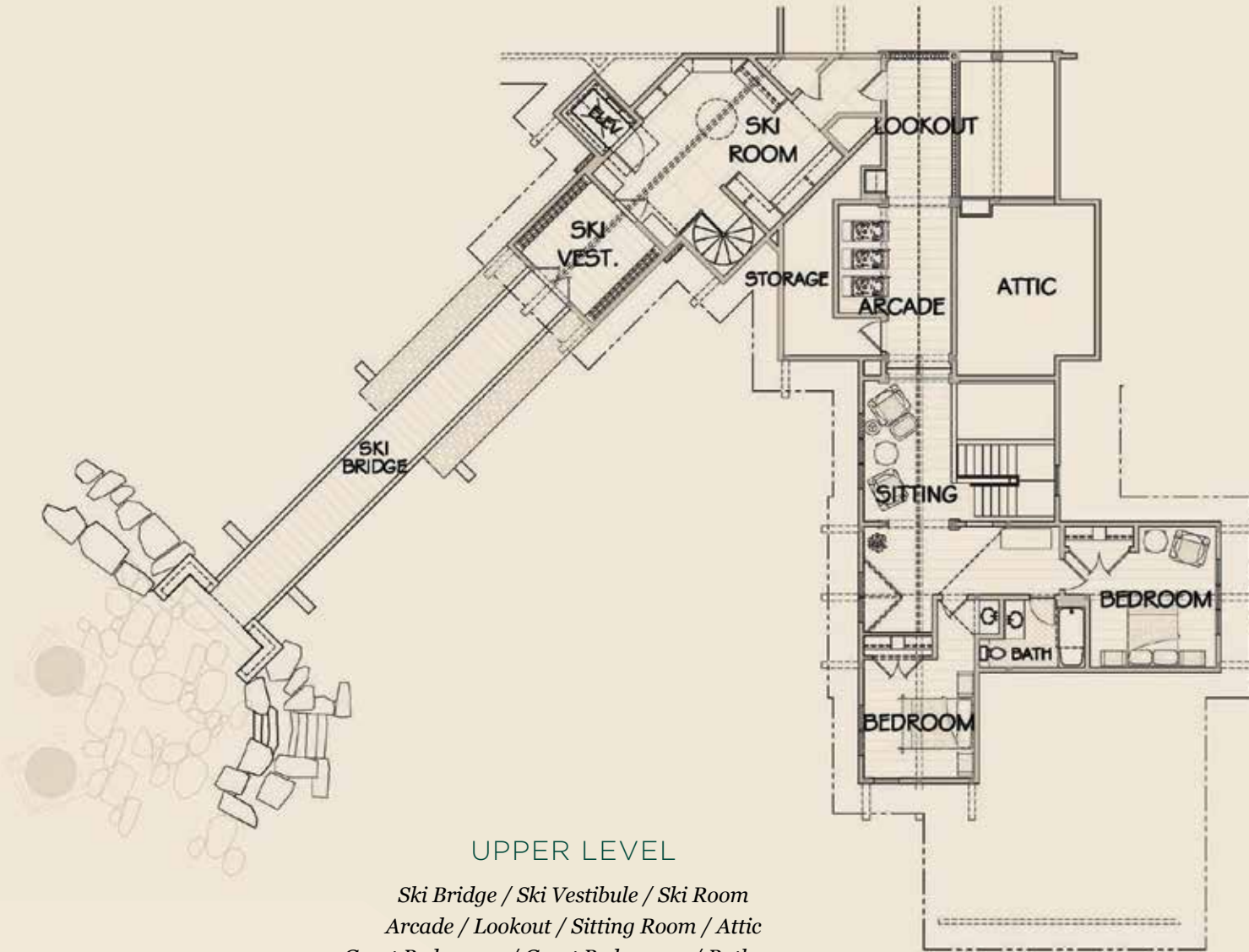


LOWER LEVEL

*Rec Room / Billiards / Home Theater / Exercise Room
Master Suite 2 + Bath / Suite + Bath / Bunk Room + Bath
Gallery / Powder Room / Covered Patio / Storage*

- PINE RIDGE 324 -

9,174 TOTAL HEATED LIVABLE SQUARE FOOTAGE



UPPER LEVEL

*Ski Bridge / Ski Vestibule / Ski Room
Arcade / Lookout / Sitting Room / Attic
Guest Bedroom 1 / Guest Bedroom 2 / Bathroom*

VIEWS OF CEDAR MOUNTAIN AND PIONEER RIDGE





HIGH TOP
DINING OUTLET



KITCHEN

MASTER SUITE





MASTER
BATH



REC ROOM / WET BAR



THEATRE

ARCADE



BUNK ROOM



SITTING ROOM





SKI LOCKER ROOM



YELLOWSTONE CLUB

For more information about this property and its pricing please contact YC Realty.
(888) 700-7748 | (406) 995-4900 | yccsales@yellowstoneclub.com | P.O. Box 161097 | Big Sky, Montana 59716
www.yellowstoneclub.com

All information deemed reliable, but not guaranteed. All acreages and square footages are estimates. The purchase of a home or homesite does not include membership in Yellowstone Club, or any right to use the private club facilities. Ownership of a home/homesite includes an obligation to pay assessments to a property owner's association. Please ask a sales associate for details. Photographs are representational of the approximate view corridors from the home. Livable square footages listed in this marketing piece are based upon the calculation of only the heated and livable areas within the exterior walls of the property and said square footages are deemed reliable, but not guaranteed. All acreages and square footages are estimates and are provided by the Seller or his designated representative; these measurements should not be a substitute for one's own evaluation and investigation. Ski accessibility is a relative term and can have different implications and meanings depending on the individual. One should investigate fully the property as it relates to its potential ski access and determine for themselves the degree of ski access the property might have or be developed. Buyer acknowledges and agrees that neither the Seller, the Broker, the Sales Associate nor any other real estate representative of the Yellowstone Club or its related affiliates have made any warranties or representations upon which Buyer has relied concerning the ski-in ski-out accessibility of the property. The determination of the level of ski access that a property might have will be the Buyers sole determination. 12/18

