



# ANDESITE RIDGE

4 Foxtail Pine Road - "Moose Haven"

| 320

VIEWS OF ANDESITE AND  
SUNSET BOULEVARD SKI RUN



# - BIG SKY RIDGE 320 -

MOOSE HAVEN - 4 FOXTAIL PINE ROAD

Situated beneath the impressive stature of Lone Peak, Moose Haven 320 provides a setting so incredible you'll feel the outdoors whether you're inside or out. Moose Haven's alpine interior is enhanced by hand-scraped walnut floors and slate floor inlays in both the entry and great rooms, with custom chandeliers and hand-forged branch stair pickets add delicate interest. Large custom windows in the great room provide captivating views to Pioneer and Cedar Mountains, where you can gaze at the miles of Private Powder available for you to ski each day.

The large kitchen features Wolf appliances, double ovens and double dishwashers. The dining area is designed to service 16 people – allowing plenty of space for you and your guests to enjoy home-cooked meals. Master and guest rooms are thoughtfully designed with private bathrooms and his/her vanities; kids will love their own private wing of the home featuring a girl's and boy's bunk-room, complete with individual bathrooms that include two showers, two sinks, and separated toilets. This family home sleeps 28, and has ski-in ski-out access.

There's something for everyone downstairs, as a game room with pool table, wet bar with saddle stools, theatre-style family room, and 400-bottle wine cellar are all featured. In addition, Moose Haven has a dedicated ski locker room, outdoor hot tub, fire pit, and deck space to enjoy the incredible landscape. Also for the golf enthusiasts, there are three elevated chipping stations and an artificial putting green to play on in the summer.



ENTRANCE



# - BIG SKY RIDGE 320 -

"MOOSE HAVEN" - 4 FOXTAIL PINE ROAD

## FEATURES

9 Bedrooms

8 Bathrooms

9,507 Heated Livable Square Footage

Convenient ski access

Outdoor grill and fire pit

Guest Apartment

Oversized 3-car garage

Custom cabinets and full wood built-in closets

Custom chandeliers

Hand-scraped Walnut floors

Hand-forged tree branch stair pickets

Wet bar with saddle stools downstairs

Spacious 400-bottle wine cellar

Heated driveway and stairway

This residence is located within Yellowstone Club, a 15,200 acre private, gated community located in Big Sky, Montana. Yellowstone Club is the world's only private ski and golf community, encompassing thousands of acres of private skiing along with a championship golf course designed by Tom Weiskopf. Additionally, whether looking to savor spectacular mountain panoramas, explore the vast wilderness or enjoy high-quality amenities, Yellowstone Club offers everything from fly fishing, hiking and biking trails to fine dining and spa services. Professional SnowSports, golf and outdoor recreation programs, along with dedicated children's activities, round out the unique Montana experience that is Yellowstone Club.



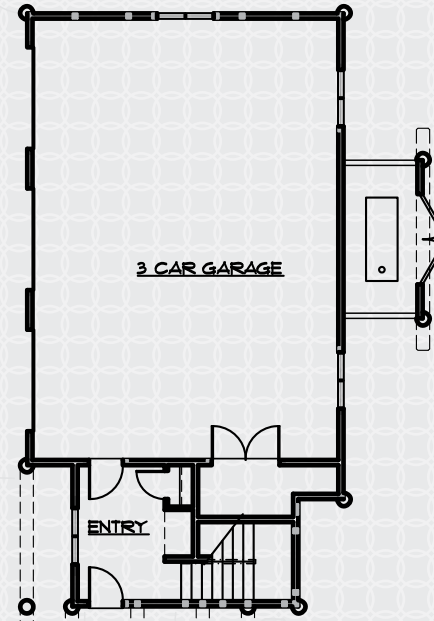
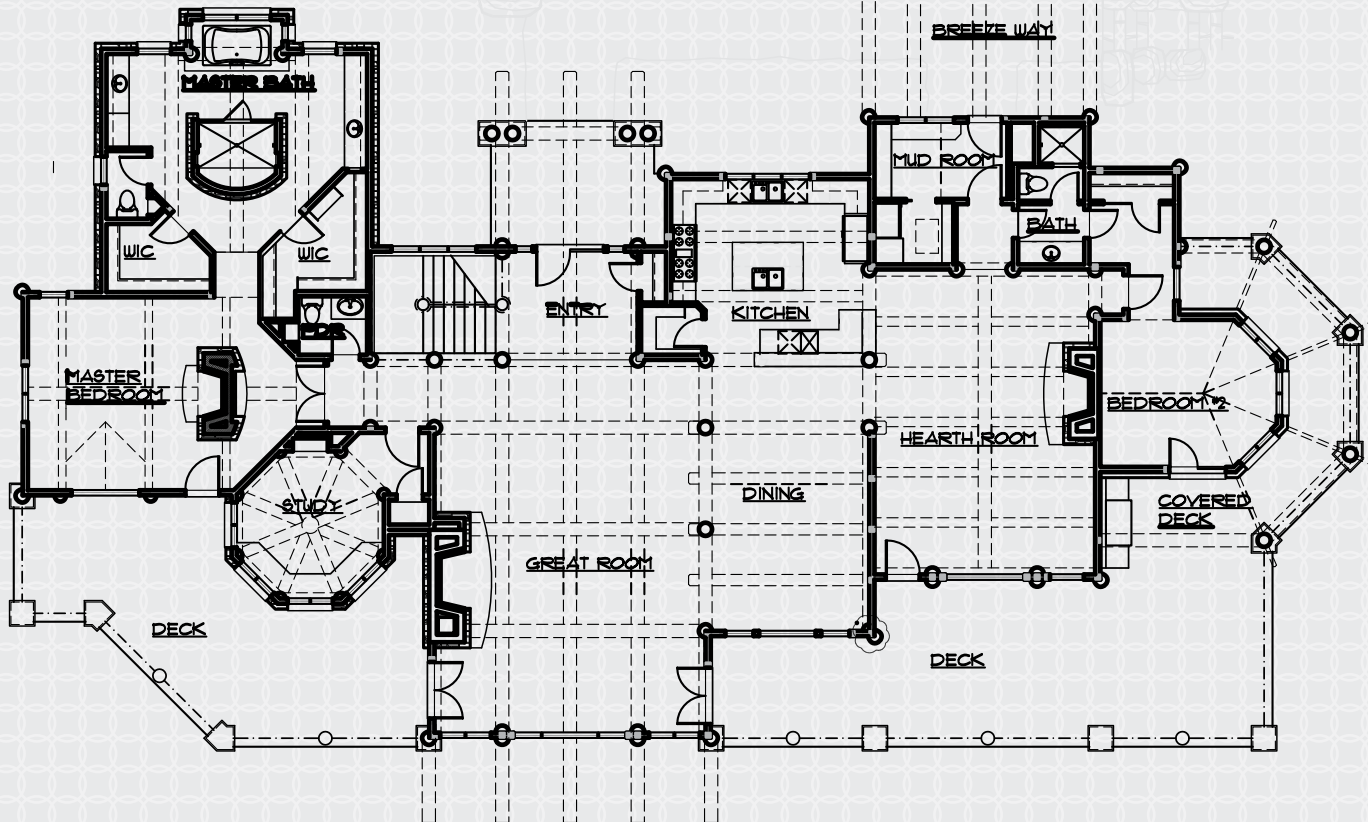
DRIVEWAY ENTRANCE

# - BIG SKY RIDGE 320 -

9,507 TOTAL HEATED LIVABLE SQUARE FOOTAGE

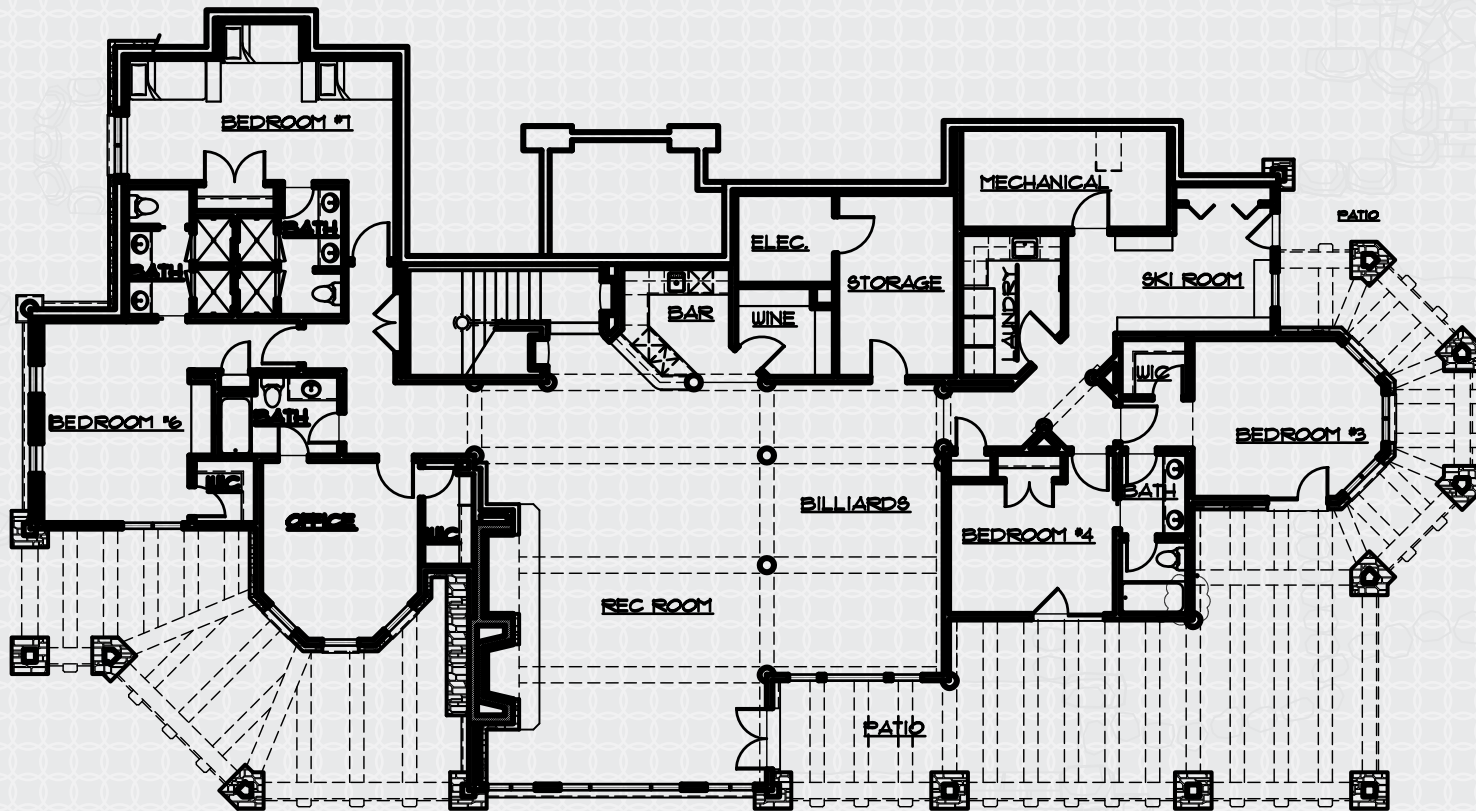
## MAIN LEVEL

*Entry Foyer / Kitchen / Living Room / Dining Room / Great Room  
Hearth Room / Mud Room / Master Suite / Master Bathroom  
Study / Guest Bedroom 5 + Bath / Outdoor Deck Space  
Garage Apartment Entry / 3 Car Garage*



# - BIG SKY RIDGE 320 -

9,507 TOTAL HEATED LIVABLE SQUARE FOOTAGE



## LOWER LEVEL

*Rec Room / Wet Bar / Wine Cellar / Ski Room  
Guest Bedroom 1 + Bath / Guest Bedroom 2 + Bath  
Guest Bedroom 3 + Bath / Guest Bedroom 4 / Office  
Outdoor Patio / Storage / Mechanical Room*

HOT TUB

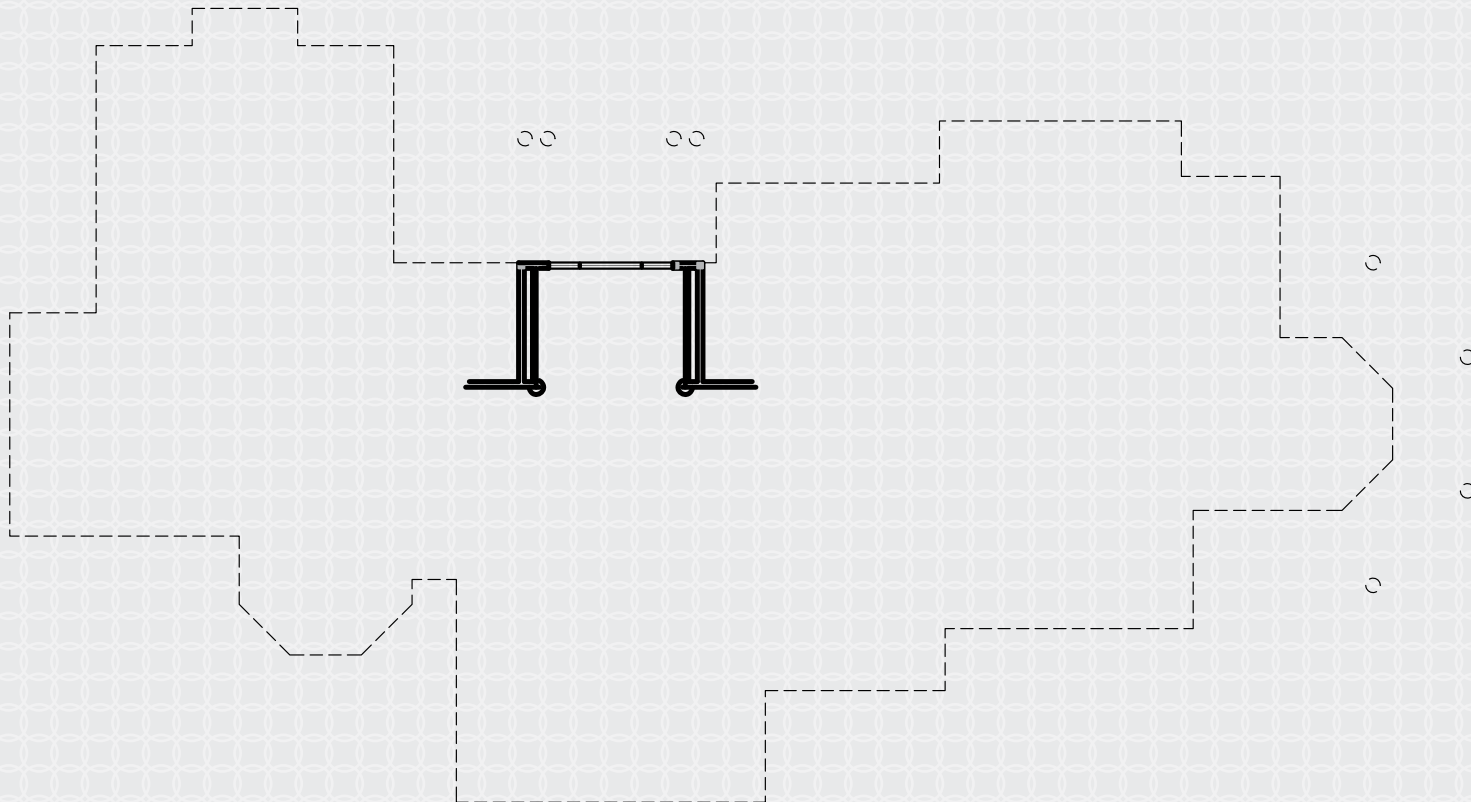
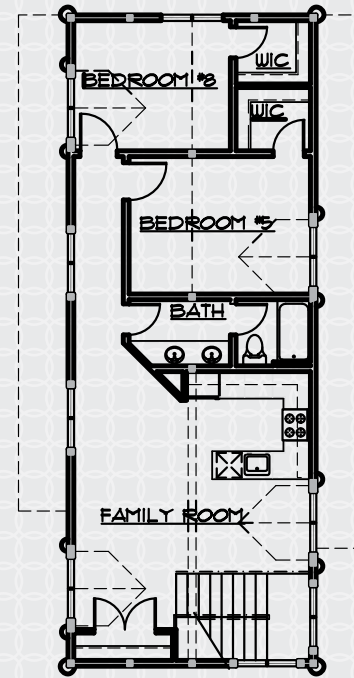
PATIO

FIRE PIT

- BIG SKY RIDGE 320 -  
9,507 TOTAL HEATED LIVABLE SQUARE FOOTAGE

UPPER LEVEL

*Guest Bedroom 6 + Bath / Guest Bedroom 7  
Family Room*





VIEWS OF LONE PEAK





GREAT ROOM



DINING

KITCHEN



HEARTH ROOM



MASTER BEDROOM





SITTING AREA



MASTER BATHROOM



MASTER SHOWER



MASTER BATHROOM



GUEST BEDROOM #1



GUEST BEDROOM #2



GUEST BEDROOM #3



GUEST BEDROOM #4





BAR / REC ROOM



DOWNSTAIRS LIVING AREA



REC ROOM



HOT TUB



BUNK ROOM #1



BUNK ROOM #2



BUNK BATHROOM #1



BUNK BATHROOM #2

GUEST APARTMENT





APARTMENT BEDROOM



APARTMENT BUNK ROOM



SKI LOCKER ROOM



APARTMENT BATHROOM







**YELLOWSTONE CLUB**

For more information about this property and its pricing please contact YC Realty.

(888) 700-7748 | (406) 995-4900 | [yccsales@yellowstoneclub.com](mailto:yccsales@yellowstoneclub.com) | P.O. Box 161097 | Big Sky, Montana 59716

[www.yellowstoneclub.com](http://www.yellowstoneclub.com)

All information deemed reliable, but not guaranteed. All acreages and square footages are estimates. The purchase of a home or homesite does not include membership in Yellowstone Club, or any right to use the private club facilities. Ownership of a home/homesite includes an obligation to pay assessments to a property owner's association. Please ask a sales associate for details. Photographs are representational of the approximate view corridors from the home. Livable square footages listed in this marketing piece are based upon the calculation of only the heated and livable areas within the exterior walls of the property and said square footages are deemed reliable, but not guaranteed. All acreages and square footages are estimates and are provided by the Seller or his designated representative; these measurements should not be a substitute for one's own evaluation and investigation. Ski accessibility is a relative term and can have different implications and meanings depending on the individual. One should investigate fully the property as it relates to its potential ski access and determine for themselves the degree of ski access the property might have or be developed. Buyer acknowledges and agrees that neither the Seller, the Broker, the Sales Associate nor any other real estate representative of the Yellowstone Club or its related affiliates have made any warranties or representations upon which Buyer has relied concerning the ski-in ski-out accessibility of the property. The determination of the level of ski access that a property might have will be the Buyers sole determination.