

BIG SKY RIDGE 448

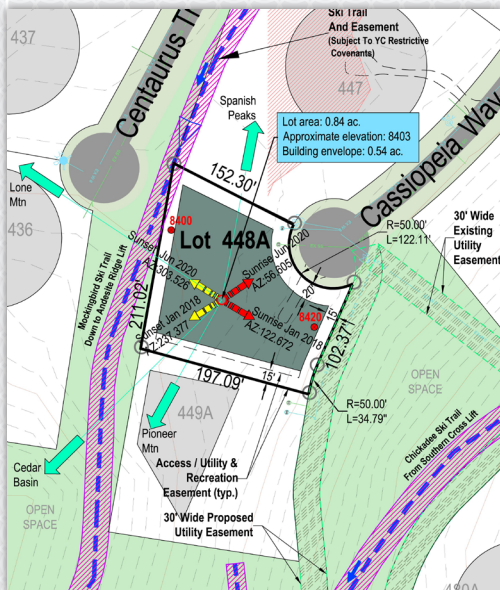


YELLOWSTONE CLUB

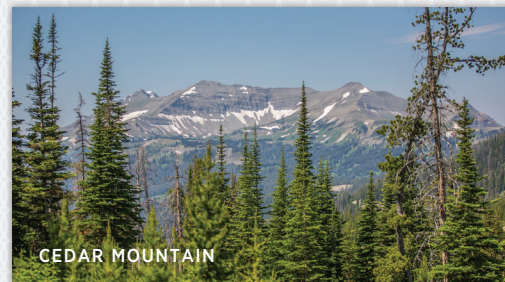
BIG SKY RIDGE 448

SPANISH PEAKS

Enjoy majestic views of Pioneer and Cedar Mountains, Lone Peak, and the Spanish Peaks from this 0.84 acre homesite in Yellowstone Club's Big Sky Ridge neighborhood. A skier's paradise, this lot has prime access to Yellowstone Club's private ski trails. Mature lodge pole pines coupled with grand views provide the perfect backdrop for a future custom residence in this magnificent alpine setting. The Mockingbird ski run right next to this homesite leads skiers straight to the slopes, and after an exhilarating day of skiing, Andesite Ridge and Southern Cross lifts will deliver you home.



LONE MOUNTAIN



CEDAR MOUNTAIN

FEATURES

- .84 Acres
- Building envelope of 8,403 sq. ft.
- Views of Lone Peak, Spanish Peaks, Pioneer Mountain, and Cedar Basin
- Mature lodge pole pine trees throughout the homesite
- Cul-de-sac access serving only 2 other properties
- Borders acres of dedicated open space

For more information about this property and its pricing please contact YC Realty.
(888) 700-7748 | (406) 995-4900 | ycesales@yellowstoneclub.com | P.O. Box 161097 | Big Sky, Montana 59716
www.yellowstoneclub.com

All information deemed reliable, but not guaranteed. All acreages and square footages are estimates. The purchase of a home or homesite does not include membership in Yellowstone Club, or any right to use the private club facilities. Ownership of a home/homesite includes an obligation to pay assessments to a property owner's association. Please ask a sales associate for details. Photographs are representational of the approximate view corridors from the home. Livable square footages listed in this marketing piece are based upon the calculation of only the heated and livable areas within the exterior walls of the property and said square footages are deemed reliable, but not guaranteed. All acreages and square footages are estimates and are provided by the Seller or his designated representative; these measurements should not be a substitute for one's own evaluation and investigation. Ski accessibility is a relative term and can have different implications and meanings depending on the individual. One should investigate fully the property as it relates to its potential ski access and determine for themselves the degree of ski access the property might have or be developed. Buyer acknowledges and agrees that neither the Seller, the Broker, the Sales Associate nor any other real estate representative of the Yellowstone Club or its related affiliates have made any warranties or representations upon which Buyer has relied concerning the ski-in ski-out accessibility of the property. The determination of the level of ski access that a property might have will be the Buyers sole determination.