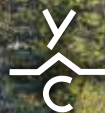


LAKESIDE | B-101

5 Seven Bears Trail



YELLOWSTONE CLUB



DECK VIEWS OF
MILLER LAKE

- LAKESIDE B-101 -

5 SEVEN BEARS TRAIL

The Village Lakeside is an enclave of 22 condominiums located in the heart of Yellowstone Club. Situated next to the Warren Miller Lodge and Miller Lake, owners of these condominiums are mere steps from all the Club has to offer. Amenities like fine dining, youth recreation, and world-class Private Powder® are within easy reach. Surrounded by pristine views with incredible proximity to all Yellowstone Club amenities, Lakeside B-101 embodies the best of all worlds.

Offering a modern take on a classic Rocky Mountain setting, Lakeside B-101 is conveniently located on the first floor of the Village Lakeside, and the home transports visitors into an open and serene space as soon as they enter through its foyer. The clean yet warm design elements in the open kitchen, dining, and living room areas showcase the unrivaled attention to detail apparent throughout Lakeside B-101 and set the stage for a thoroughly mountain modern experience. Each of the three bedrooms in the condominium will provide sanctuary after days spent exploring Yellowstone Club's thousands of acres of Private Powder, playing golf on its Tom Weiskopf-designed mountain course, or enjoying activities on Warren Miller Lake. The home's deck will offer a welcome retreat from which to enjoy bright alpine mornings and cool mountain evenings.

All condominiums at the Village Lakeside were built to exacting architectural standards, and Lakeside B-101 is no exception. Its gourmet kitchen with informal and formal seating areas, fireplaces, and outdoor deck space from which to enjoy views of Eglise Mountain, Pioneer Mountain, and Miller Lake will make it a favorite gathering space for family and friends for years to come.

Additionally, residents of unit B-101 receive their own family locker to enjoy and it is conveniently located in Warren Miller Lodge.



LAKESIDE ENTRANCE

- LAKESIDE B-101 -

5 SEVEN BEARS TRAIL

FEATURES

2,152 livable square feet

3 bedroom condominium in the Village Lakeside at Yellowstone Club

3 bathrooms

Outdoor deck

First floor location in central base area development ensures prime access to all Yellowstone Club amenities

Clean yet warm design embodies mountain modern feel throughout

Access to parking directly beneath unit

Family Locker in Warren Miller Lodge included

This residence is located within Yellowstone Club, a 15,200 acre private, gated community located in Big Sky, Montana. Yellowstone Club is the world's only private ski and golf community, encompassing thousands of acres of private skiing along with a championship golf course designed by Tom Weiskopf. Additionally, whether looking to savor spectacular mountain panoramas, explore the vast wilderness or enjoy high-quality amenities, Yellowstone Club offers everything from fly fishing, hiking and biking trails to fine dining and spa services. Professional SnowSports, golf and outdoor recreation programs, along with dedicated children's activities, round out the unique Montana experience that is Yellowstone Club.



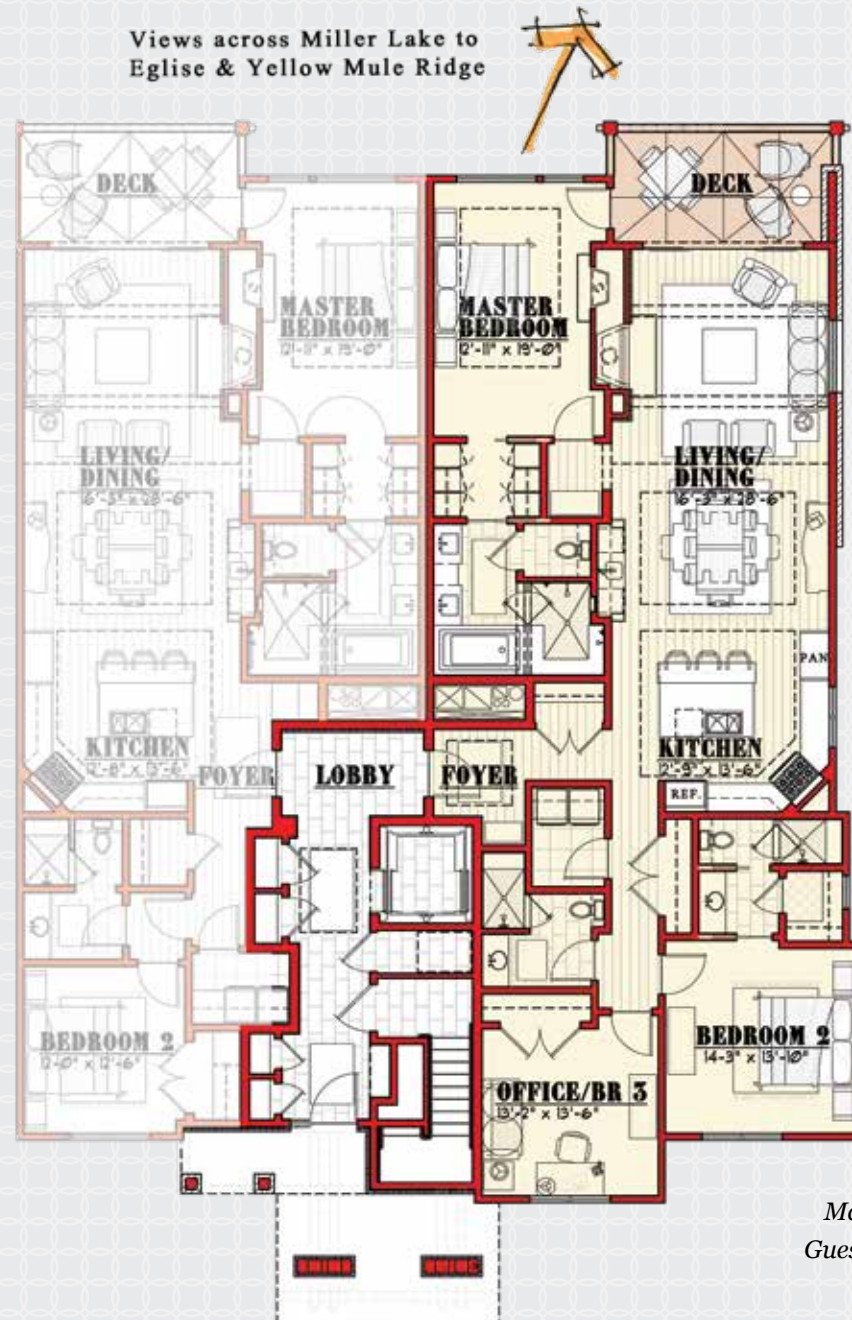
LAKESIDE ENTRANCE
& SKY BRIDGE



KITCHEN

- LAKESIDE B-101 -

2,152 TOTAL HEATED LIVABLE SQUARE FOOTAGE



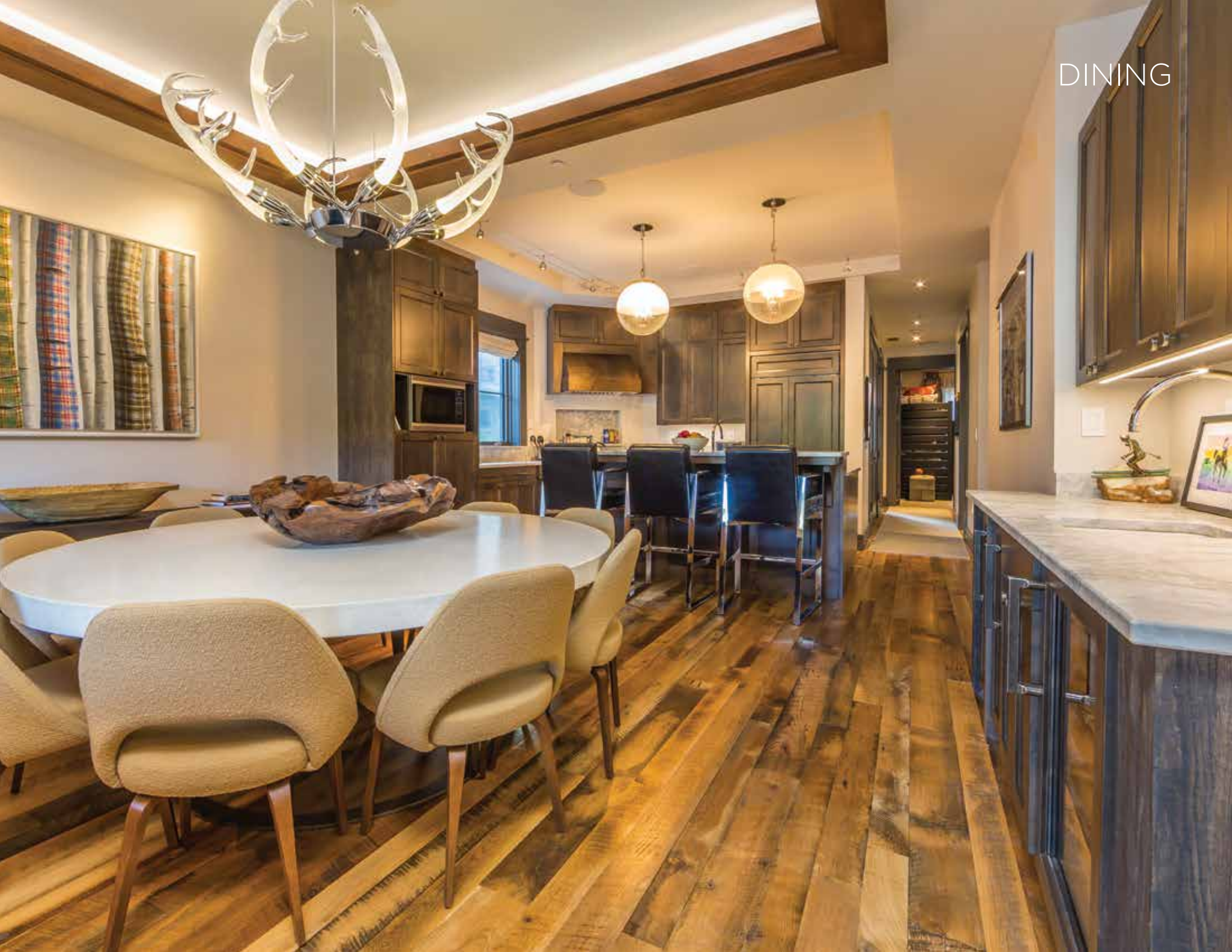
ONE LEVEL

Foyer / Living/Dining / Kitchen

Master Bedroom / Master Deck / Guest Bedroom 1

Guest Bathroom / Guest Bedroom 2 / Guest Bathroom

DINING



LIVING ROOM







MASTER BEDROOM



MASTER BATHROOM



GUEST BEDROOM



GUEST BATHROOM



BUNK ROOM



GUEST BATHROOM



YELLOWSTONE CLUB

For more information about this property and its pricing please contact YC Realty.

(888) 700-7748 | (406) 995-4900 | yccsales@yellowstoneclub.com | P.O. Box 161097 | Big Sky, Montana 59716
www.yellowstoneclub.com

All information deemed reliable, but not guaranteed. All acreages and square footages are estimates. The purchase of a home or homesite does not include membership in Yellowstone Club, or any right to use the private club facilities. Ownership of a home/homesite includes an obligation to pay assessments to a property owner's association. Please ask a sales associate for details. Photographs are representational of the approximate view corridors from the home. Livable square footages listed in this marketing piece are based upon the calculation of only the heated and livable areas within the exterior walls of the property and said square footages are deemed reliable, but not guaranteed. All acreages and square footages are estimates and are provided by the Seller or his designated representative; these measurements should not be a substitute for one's own evaluation and investigation. Ski accessibility is a relative term and can have different implications and meanings depending on the individual. One should investigate fully the property as it relates to its potential ski access and determine for themselves the degree of ski access the property might have or be developed. Buyer acknowledges and agrees that neither the Seller, the Broker, the Sales Associate nor any other real estate representative of the Yellowstone Club or its related affiliates have made any warranties or representations upon which Buyer has relied concerning the ski-in ski-out accessibility of the property. The determination of the level of ski access that a property might have will be the Buyers sole determination.