

- ANDESITE RIDGE 110 -

376 ANDESITE RIDGE ROAD





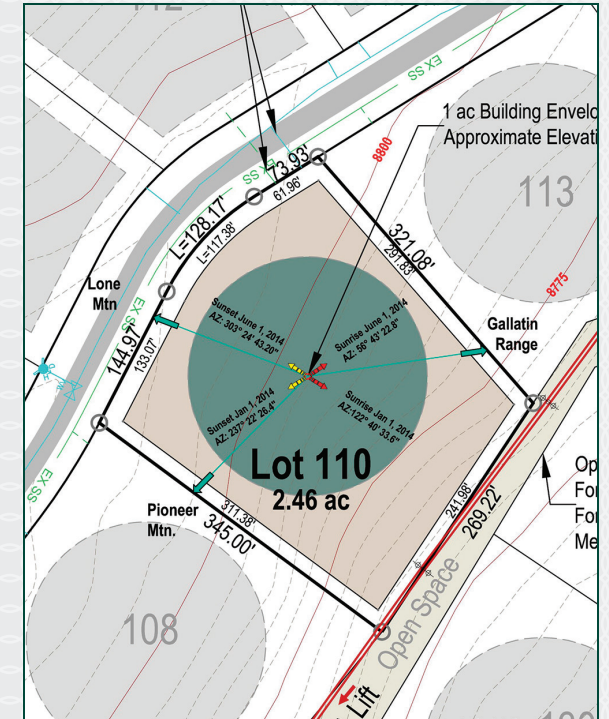
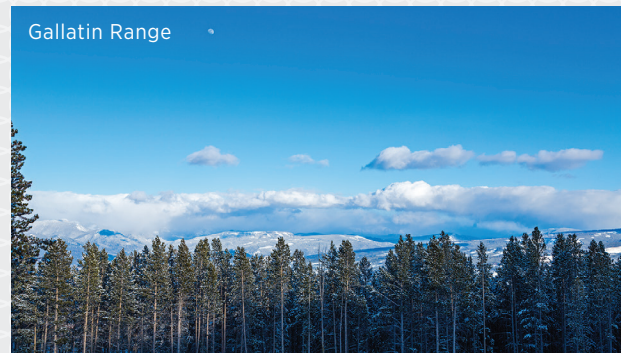
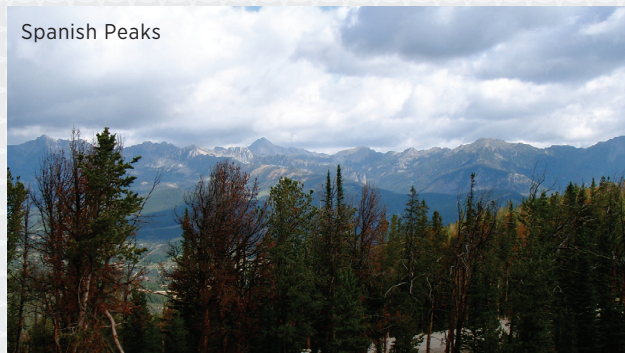
# - ANDESITE RIDGE 110 -

376 ANDESITE RIDGE ROAD

**A**ndesite Ridge 110 is a fantastic homesite with views, ski access and trees to allow you privacy. The homesite is adjacent to the Fandango Lift and offers unparalleled ski access, allowing you to walk out of your future ski room and click into your skis on the snow. Capturing amazing views of Lone Peak, Spanish Peaks and the Gallatin Range, this is the perfect homesite to build your dream mountain residence.

## FEATURES

- 2.46 Acres
- Ski Access



*This homesite is located within Yellowstone Club, a 13,600 acre private, gated community located in Big Sky, Montana. Yellowstone Club is the world's only private ski and golf community, with thousands of acres of private skiing together with a championship golf course designed by Tom Weiskopf. Additionally, there are fishing streams, hiking and biking trails and horseback riding. Personal attention assures an excellent children's program as well as high-quality amenities which round out the unique Montana experience that is Yellowstone Club.*

For more information about this property and its pricing, please contact your YC Realty Sales Associate.  
(888) 700-7748 | (406) 995-4900 | [yccsales@yellowstoneclub.com](mailto:yccsales@yellowstoneclub.com) | P.O. Box 161097 | Big Sky, Montana 59716  
[www.yellowstoneclub.com](http://www.yellowstoneclub.com)

All information deemed reliable, but not guaranteed. All acreages are estimates. The purchase of a homesite does not include membership in Yellowstone Club, or any right to use the private club facilities. Ownership of a homesite includes an obligation to pay assessments to a property owner's association. Please ask a sales associate for details. Photographs are representational of the approximate view corridors from the homesite. All acreages and square footages are estimates meanings depending on the individual. One should investigate fully the property as it relates to its potential ski access and determine for themselves the degree of ski access the property might have or be developed. Buyer acknowledges and agrees that neither the Seller, the Broker, the Sales Associate nor any other real estate representative of the Yellowstone Club or its related affiliates have made any warranties or representations upon which Buyer has relied concerning the ski-in ski-out accessibility of the property. The determination of the level of ski access that a property might have will be the Buyers sole determination.