

# ANDESITE RIDGE | 106

364 Andesite Ridge Road



YELLOWSTONE CLUB

GREAT ROOM



# - ANDESITE RIDGE 106 -

364 ANDESITE RIDGE ROAD

Oh, the views! While the Yellowstone Club has countless perks and amenities, it is this glorious mountain setting that brings this lifestyle into sharp focus. And views abound at Andesite Ridge 106, a custom residence located at 364 Andesite Ridge Road. Framed against the impressive backdrop of Lone Peak, this home is the perfect setting to witness and experience the changing of the seasons. While not much in life is as permanent as a mountain, this custom residence echoes the timelessness of its mountain setting: it is beautiful, inviting, and perennial.

This home sits on over two acres of gently-sloped, lightly-treed land, and offers 2620 sq. ft of outdoor living space in addition to nearly 7,000 sq. ft of heated livable space. From the main entry, guests are drawn inward toward grand views, warm furnishings, and vaulted ceilings. The living room captures broad southern views of Pioneer Mountain, Eglise, and the Gallatin Range toward Yellowstone National Park. Glass doors lead out to the expansive deck, ideal for soaking in the long summer days as they turn to evening. The deck leads down to the heated stone patio, home to a sunken 10-person hot tub, fireplace, outdoor grill, and entertainment area. Wildflowers bloom in the summer months, sprinkling the outdoor spaces with natural pops of color. In the winter, a path behind the house leads to the neighborhood ski run—this is ski in/ski out living!

Back inside, Andesite Ridge 106 presents a range of highlights. On the main level, the home's kitchen features high-end appliances like the Thermador refrigerator, the convenient Fisher-Pakel dishwasher drawers, and the built-in Miele coffee system: let the home cook delight! The master suite begins off the entry, where a beautiful library/office opens into the bedroom space. The lofted ceiling, stacked stone walls, warm wood hues, and custom lighting gives this large space an intimate, cabin feel. Details like a copper soaking tub, fireplace, and private deck add both functionality and charm. A separate guest suite is located on the opposite side of the main level and also includes its own full bath and private deck.

The home's lower level is a relaxed recreation space: both the home theater and the wet bar area make this space ideal for entertaining. The stone wine cellar next to the bar offers a beautiful addition to the lower level space. The home's upper level features an additional two bedrooms, each with its own bath and a shared sitting area. Walking through a wood crafted locker room and by the oversized two-car heated garage, a second staircase leads to a game room, a perfect getaway space.

This custom residence is offered fully furnished, and includes approved plans for a garage addition, ski hut, and additional garage. Andesite Ridge 106, from its nook in the pines, is a breathtaking spot to not just see the mountain views, but to truly live in them.



LOCKER ROOM



KITCHEN

# - ANDESITE RIDGE 106 -

364 ANDESITE RIDGE ROAD

## FEATURES

4 Bedroom

8 Bathroom

2620 sq. ft of outdoor living space in addition to nearly 7,000 sq. ft of heated livable

Ski in/Ski out access

Heated garage

Spectacular 360 views of Lone Peak, Spanish Peaks, and Pioneer Mountain

Wine Cellar

Custom stone work

Vaulted ceilings, not only throughout great room, but throughout the home

Theater Entertainment area with bar

Unique lighting fixtures

Upper level game room with wet bar and deck

Heated stone patios with hot tub, fireplace, and BBQ

ARC Approved Architectural Plans for extension to garage including upper level bedroom(s), ski hut at Fandango lift, and free standing garage

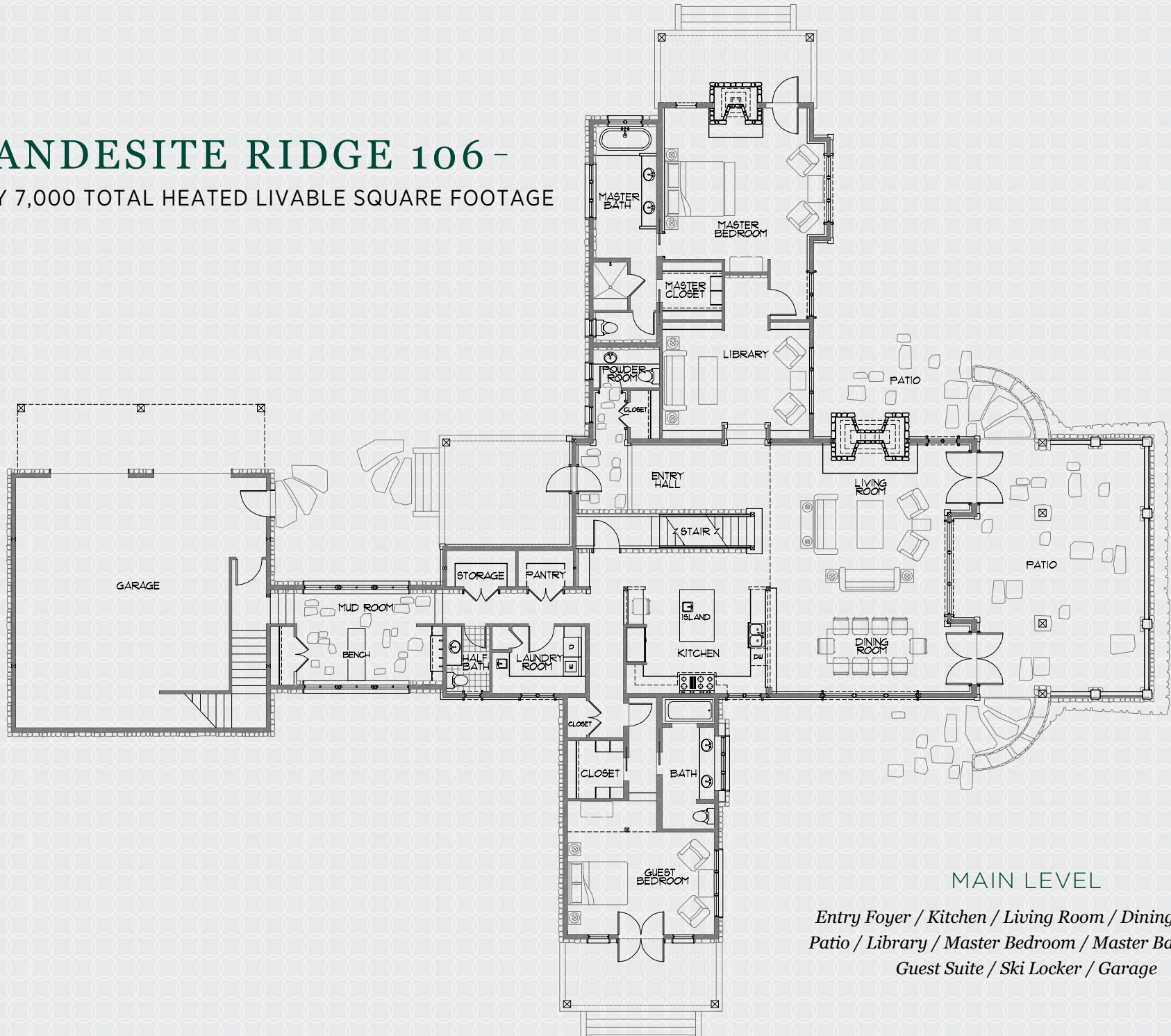
This residence is located within Yellowstone Club, a 15,200 acre private, gated community located in Big Sky, Montana. Yellowstone Club is the world's only private ski and golf community, encompassing thousands of acres of private skiing along with a championship golf course designed by Tom Weiskopf. Additionally, whether looking to savor spectacular mountain panoramas, explore the vast wilderness or enjoy high-quality amenities, Yellowstone Club offers everything from fly fishing, hiking and biking trails to fine dining and spa services. Professional SnowSports, golf and outdoor recreation programs, along with dedicated children's activities, round out the unique Montana experience that is Yellowstone Club.

## HOT TUB PATIO



# - ANDESITE RIDGE 106 -

NEARLY 7,000 TOTAL HEATED LIVABLE SQUARE FOOTAGE

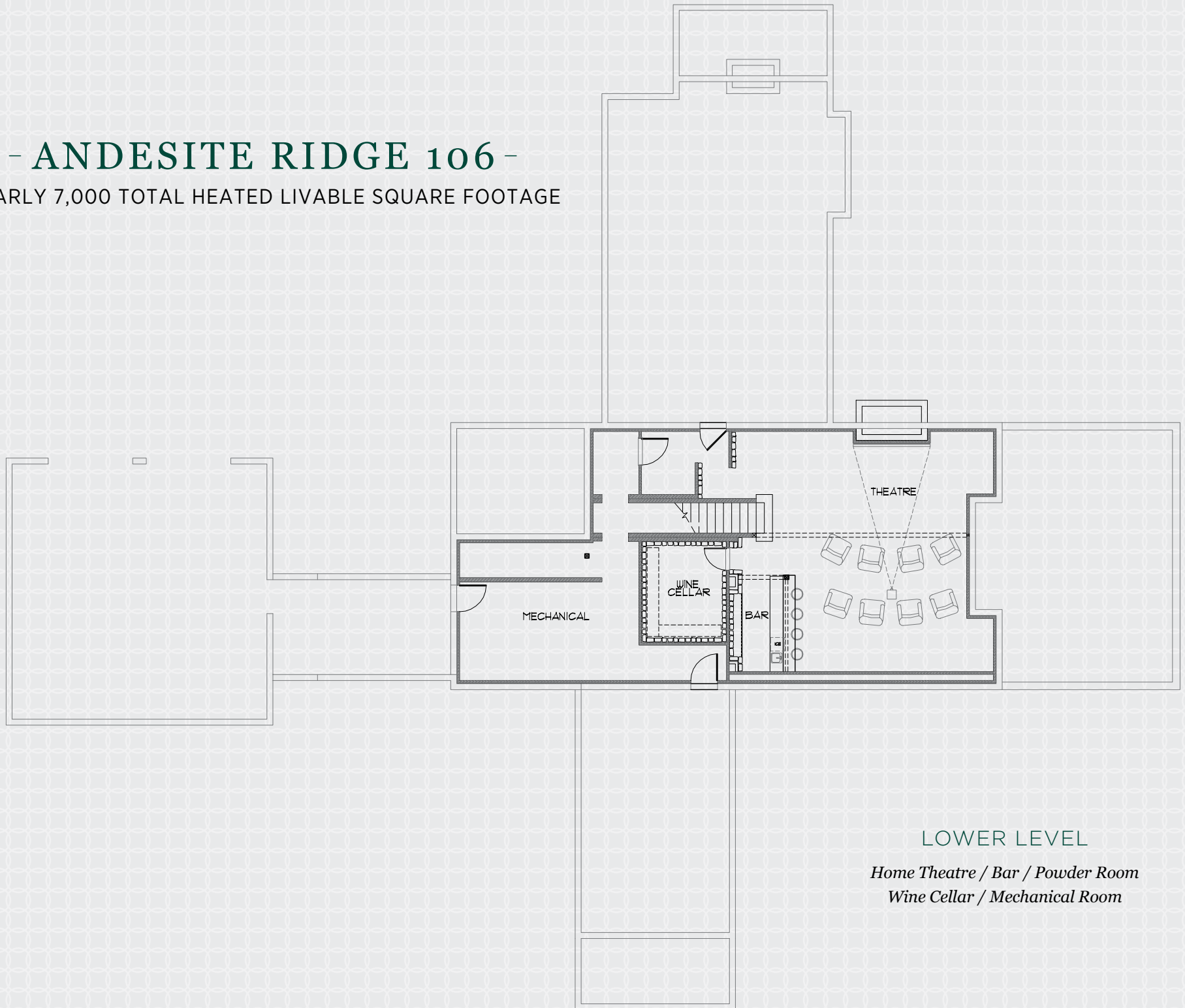


## MAIN LEVEL

*Entry Foyer / Kitchen / Living Room / Dining Room /  
Patio / Library / Master Bedroom / Master Bathroom /  
Guest Suite / Ski Locker / Garage*

# - ANDESITE RIDGE 106 -

NEARLY 7,000 TOTAL HEATED LIVABLE SQUARE FOOTAGE



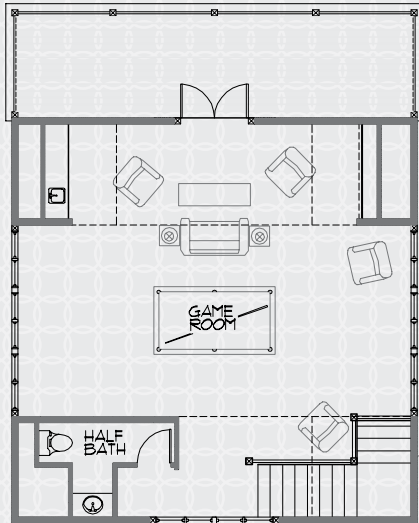
## LOWER LEVEL

*Home Theatre / Bar / Powder Room*

*Wine Cellar / Mechanical Room*

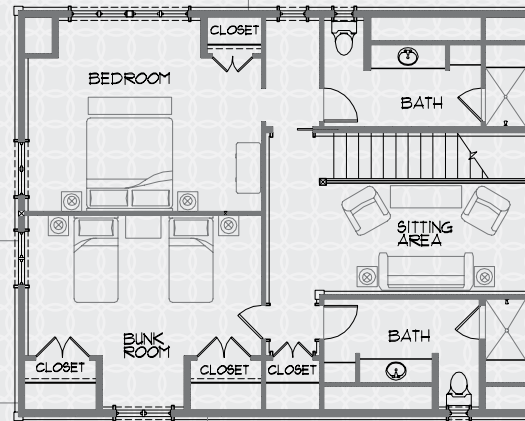
# - ANDESITE RIDGE 106 -

NEARLY 7,000 TOTAL HEATED LIVABLE SQUARE FOOTAGE



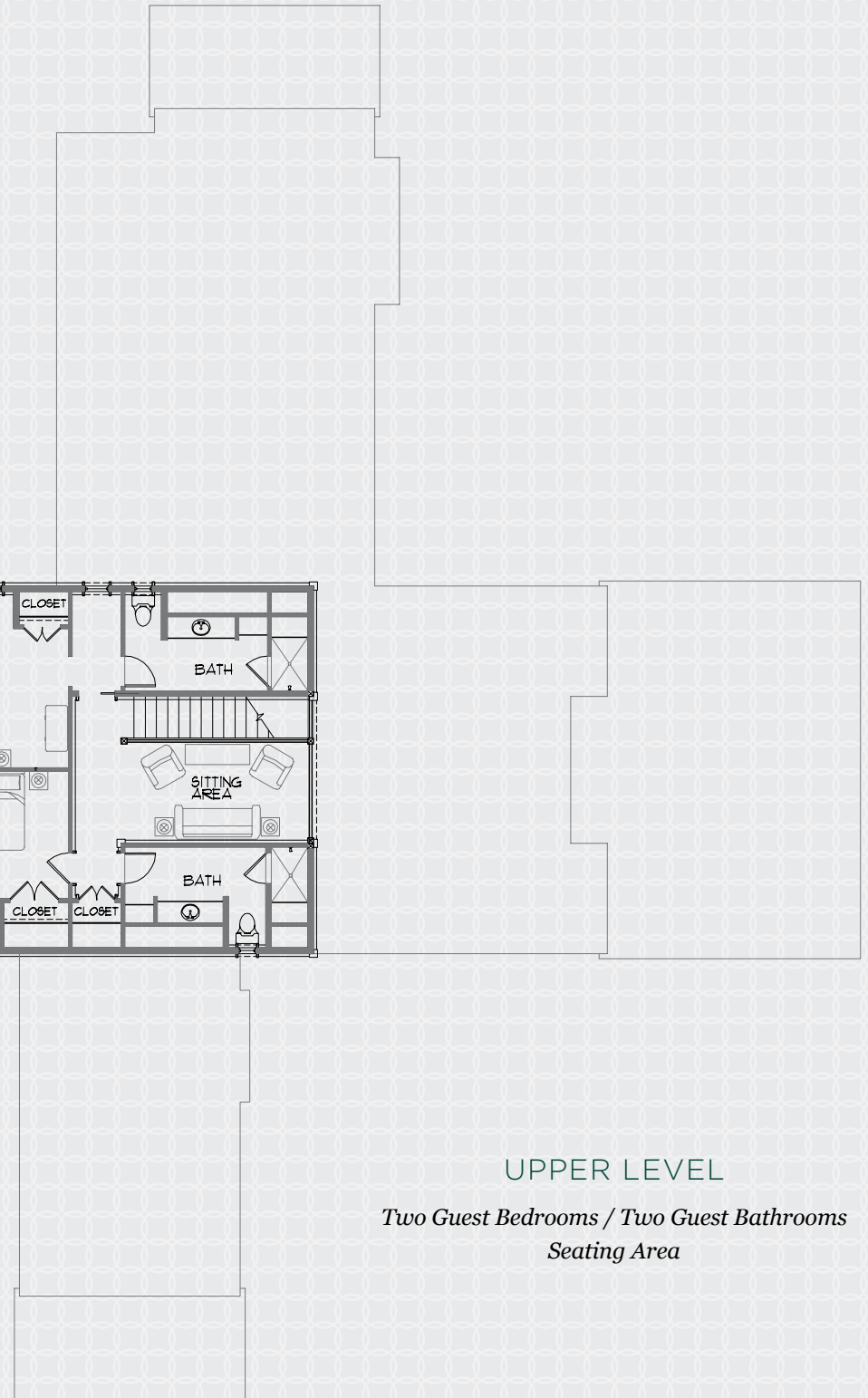
## ABOVE GARAGE

*Game Room / Wet Bar  
Powder Room / Deck*



## UPPER LEVEL

*Two Guest Bedrooms / Two Guest Bathrooms  
Seating Area*





EXTERIOR VIEW /  
LIFT ACCESS



MASTER SUITE





MASTER BATH



LIBRARY/  
OFFICE



THEATRE



WINE CELLAR



GAME ROOM

GUEST SUITE





GREAT ROOM



## YELLOWSTONE CLUB

For more information about this property and its pricing please contact YC Realty.

(888) 700-7748 | (406) 995-4900 | [yccsales@yellowstoneclub.com](mailto:yccsales@yellowstoneclub.com) | P.O. Box 161097 | Big Sky, Montana 59716

[www.yellowstoneclub.com](http://www.yellowstoneclub.com)

All information deemed reliable, but not guaranteed. All acreages and square footages are estimates. The purchase of a home or homesite does not include membership in Yellowstone Club, or any right to use the private club facilities. Ownership of a home/homesite includes an obligation to pay assessments to a property owner's association. Please ask a sales associate for details. Photographs are representational of the approximate view corridors from the home. Livable square footages listed in this marketing piece are based upon the calculation of only the heated and livable areas within the exterior walls of the property and said square footages are deemed reliable, but not guaranteed. All acreages and square footages are estimates and are provided by the Seller or his designated representative; these measurements should not be a substitute for one's own evaluation and investigation. Ski accessibility is a relative term and can have different implications and meanings depending on the individual. One should investigate fully the property as it relates to its potential ski access and determine for themselves the degree of ski access the property might have or be developed. Buyer acknowledges and agrees that neither the Seller, the Broker, the Sales Associate nor any other real estate representative of the Yellowstone Club or its related affiliates have made any warranties or representations upon which Buyer has relied concerning the ski-in ski-out accessibility of the property. The determination of the level of ski access that a property might have will be the Buyers sole determination.