

# - SUNRISE RIDGE 9B -

41B ALPENGLOW TRAIL



YELLOWSTONE CLUB



Great Room

## - SUNRISE RIDGE 9B -

41B ALPENGLOW TRAIL

A favorite neighborhood within Yellowstone Club, Sunrise Ridge offers a perfect blend of convenience, camaraderie and privacy. Within this neighborhood, Sunrise Ridge 9B boasts a cozy yet open ambiance and welcoming spaces with alpine accents. Contemporary western Montana lifestyle shine through the décor throughout the unit, and a glance out any of the abundant windows offers unmistakable proof that this duplex is situated in the most beautiful Montana setting.

The home's main level features a welcoming entry foyer that opens to the great room, where the fireplace and lofty ceilings take center stage. Adjacent to the great room is the kitchen and dining area, where formal and casual seating options guarantee that the kitchen will become a gathering place for family and guests. The home's master suite, also located on the main level, offers a mix of warm wood, contemporary finishes, and beautiful views. The owners will enjoy the fireplace and sitting area, spacious walk-in closet, and large tub.

The lower level of Sunrise Ridge 9B has the amenities and space to keep family and friends comfortable and entertained. Thoughtfully designed to maximize privacy, the lower level consists of four bedrooms, each with its own bathroom. Large windows and walk-out access to a covered patio make for a great place to spend the afternoon. This Sunrise Ridge duplex is open, airy, and modern, with all the luxury and convenience that signifies a Yellowstone Club residence, but with the added Sunrise Ridge Clubhouse amenities.



Great Room



*Kitchen and Dining Room*

## - SUNRISE RIDGE 9B -

41B ALPENGLOW TRAIL

### FEATURES

- 4,696 heated livable square feet across two levels
- 4 bedrooms + 1 bunk room
- 5 bathrooms + 2 powder rooms
- Radiant floor heating throughout
- Natural stone flooring in bathroom, mudroom, and laundry room
- Southern views to Eglise and Pioneer Mountains
- Immediate access to the Sunrise Ridge Clubhouse
- Warren Miller Lodge and YC's Golf Clubhouse accessible via a short drive

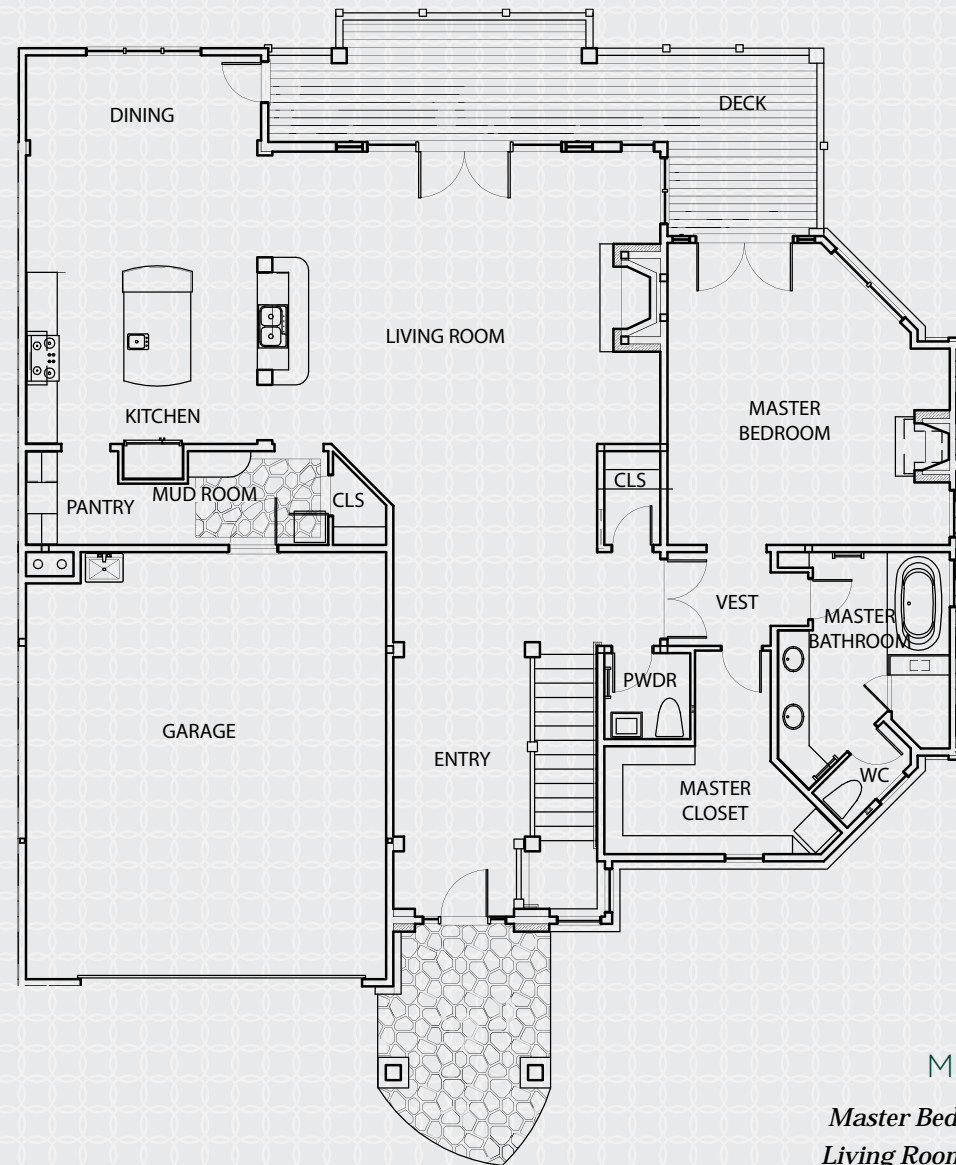
This residence is located within Yellowstone Club, a 13,600 acre private, gated community located in Big Sky, Montana. Yellowstone Club is the world's only private ski and golf community, encompassing thousands of acres of private skiing along with a championship golf course designed by Tom Weiskopf. Additionally, whether looking to savor spectacular mountain panoramas, explore the vast wilderness or enjoy high-quality amenities, Yellowstone Club offers everything from fly fishing, hiking and biking trails to fine dining and spa services. Professional SnowSports, golf and outdoor recreation programs, along with dedicated children's activities, round out the unique Montana experience that is Yellowstone Club.



*Entry*

- SUNRISE RIDGE 9B -

4,696 TOTAL HEATED LIVABLE SQUARE FOOTAGE

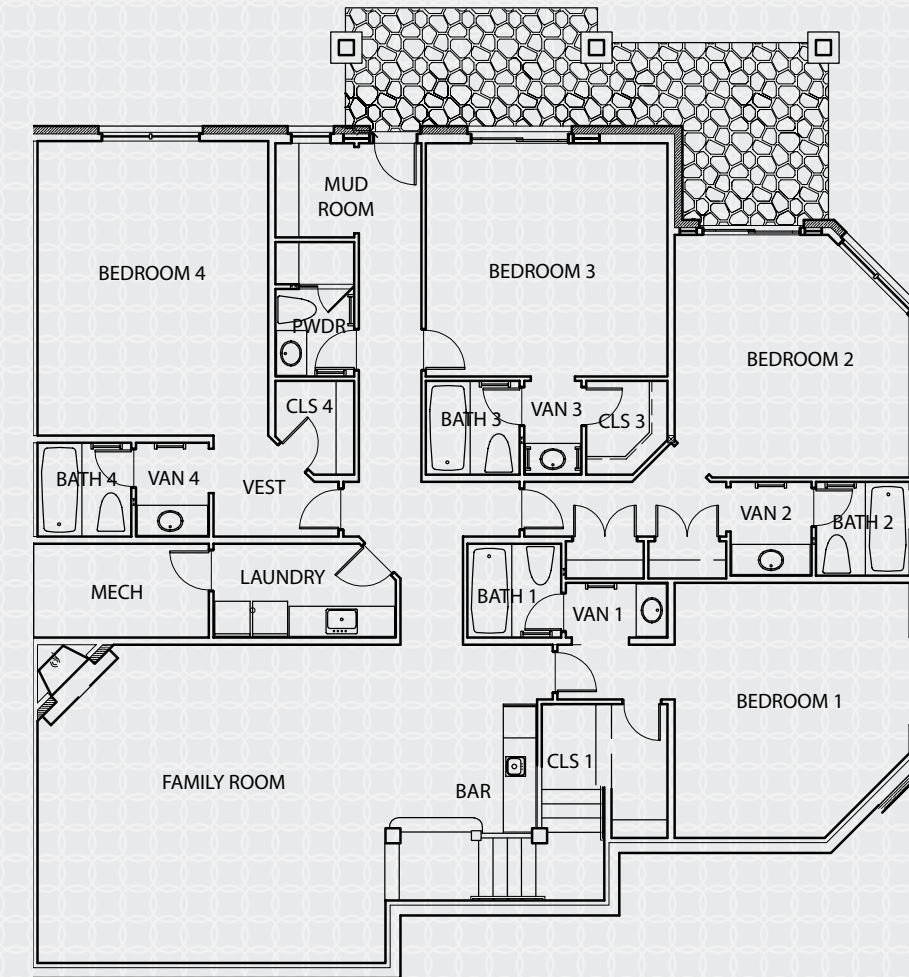


MAIN LEVEL

*Master Bedroom / Master Bathroom  
Living Room / Kitchen / Dining Room  
Powder Room / 2-Car Garage*

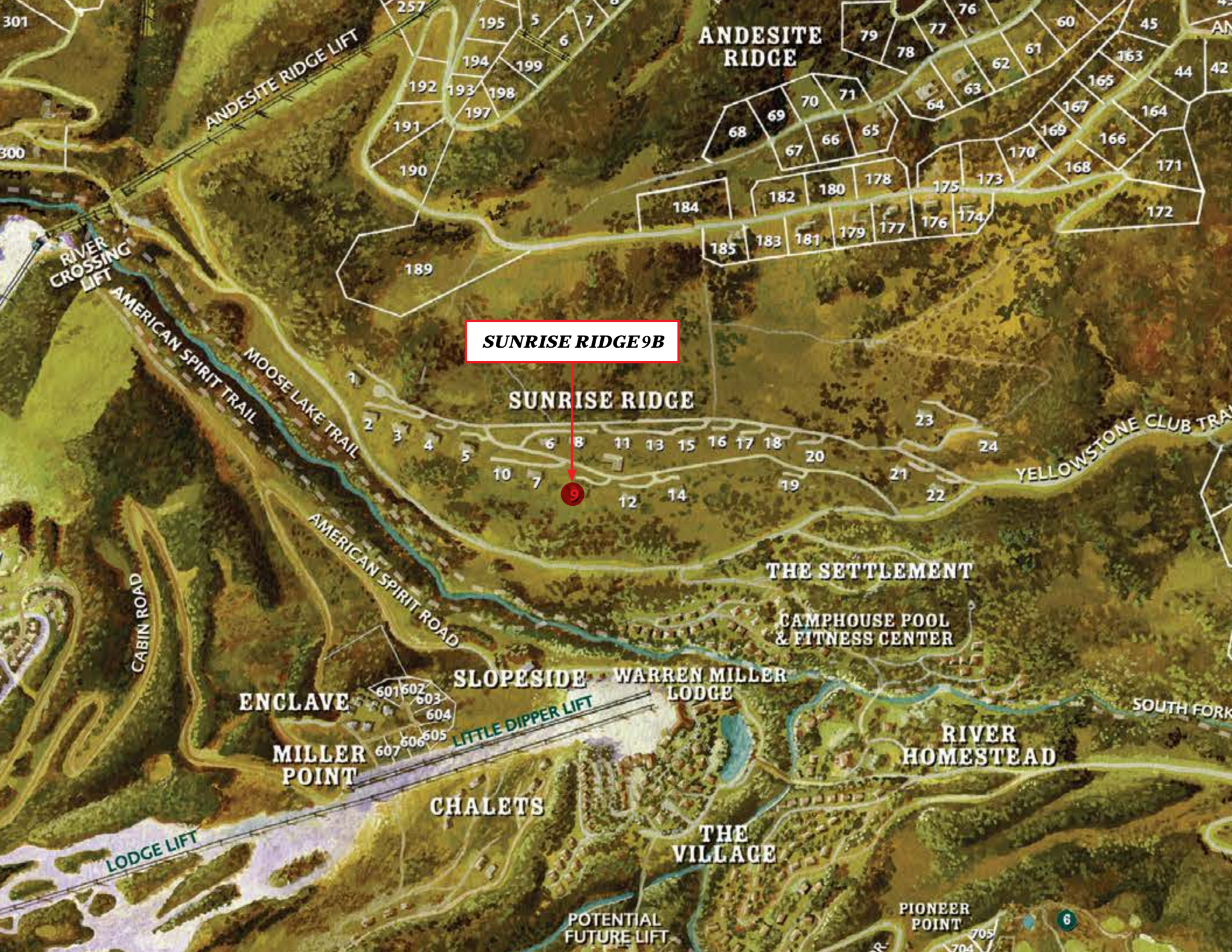
- SUNRISE RIDGE 9B -

4,696 TOTAL HEATED LIVABLE SQUARE FOOTAGE



LOWER LEVEL

*4 Guest Bedrooms / 4 Guest Bathrooms  
Family Room / Bar / Powder Room / Laundry Room  
Mud Room / Mechanical Room*

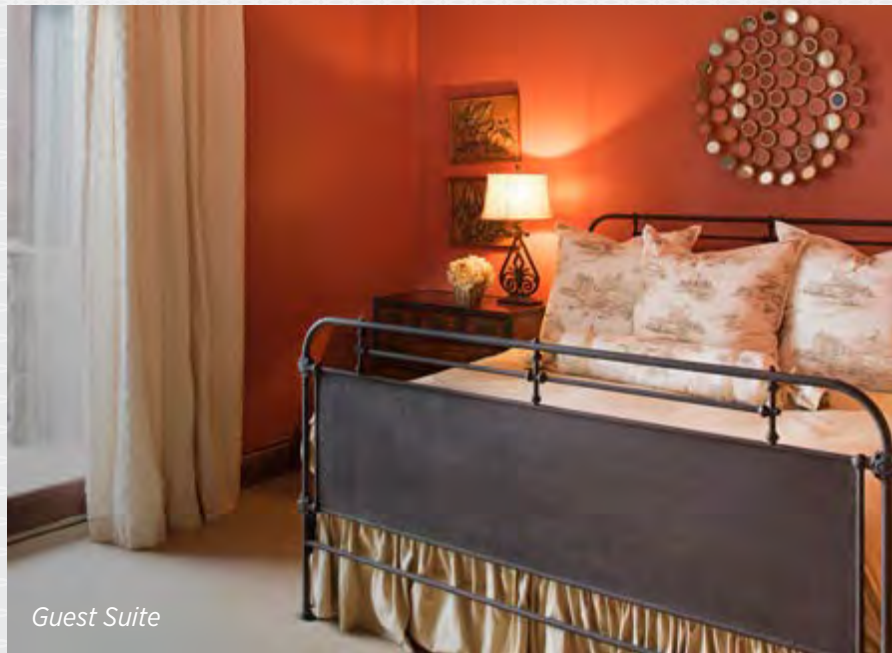




Guest Suite



Master Bathroom



Guest Suite



Master Suite



*Bunk Room*



*View from the Deck*



## YELLOWSTONE CLUB

For more information about this property and its pricing please contact YC Realty.

(888) 700-7748 | (406) 995-4900 | [yccsales@yellowstoneclub.com](mailto:yccsales@yellowstoneclub.com) | P.O. Box 161097 | Big Sky, Montana 59716

[www.yellowstoneclub.com](http://www.yellowstoneclub.com)

All information deemed reliable, but not guaranteed. All acreages and square footages are estimates. The purchase of a home or homesite does not include membership in Yellowstone Club, or any right to use the private club facilities. Ownership of a home/homesite includes an obligation to pay assessments to a property owner's association. Please ask a sales associate for details. Photographs are representational of the approximate view corridors from the home. Livable square footages listed in this marketing piece are based upon the calculation of only the heated and livable areas within the exterior walls of the property and said square footages are deemed reliable, but not guaranteed. All acreages and square footages are estimates and are provided by the Seller or his designated representative; these measurements should not be a substitute for one's own evaluation and investigation. Ski accessibility is a relative term and can have different implications and meanings depending on the individual. One should investigate fully the property as it relates to its potential ski access and determine for themselves the degree of ski access the property might have or be developed. Buyer acknowledges and agrees that neither the Seller, the Broker, the Sales Associate nor any other real estate representative of the Yellowstone Club or its related affiliates have made any warranties or representations upon which Buyer has relied concerning the ski-in ski-out accessibility of the property. The determination of the level of ski access that a property might have will be the Buyers sole determination. 2/17

