

- AMERICAN SPIRIT 850 -

5 REVERE WAY



YELLOWSTONE CLUB



Dining Room



Entry



Great Room

- AMERICAN SPIRIT 850 -

5 REVERE WAY

Located at 5 Revere Way, American Spirit 850 is a custom residence designed to enrich the Yellowstone Club experience. With walls of glass, expansive views, and spaces that blend the indoors and outdoors, the owners of this home will come to love the seasonal patterns that define mountain living. From waking up to fresh powder, to watching the seasons change, to bursts of wildflowers: this custom residence makes the beauty of the Rocky Mountains a part of daily life.

This spacious home is carefully laid out over three levels. With six bedrooms, each with a full bath, everyone is guaranteed solitude when they need it. The home also has many spaces that encourage mingling and gathering – though this home is quite spacious, it never feels isolating. Friends and family will enjoy spending time together in the great room, the kitchen, the game room, or on the covered deck.

Guests arrive via a glassed-in entry on the home's lower level – this is where they will first notice how light dances throughout the home. The lower level contains a guest suite, a bunk suite, bar area, family room, and game room, plus ample storage and laundry facilities. From the entry, stairs welcome guests to the main level, where the great room appears to open up to the outdoors thanks to incredible windows that stretch clear to the roof peak. The main level is also home to the gourmet kitchen, dining room, master suite, and junior master. A separate ski room opens to the patio – compete with hot tub – where a short set of stairs brings skiers right to the snow. The home's upper level contains two additional guest suites plus a cozy loft space, perfect for studying, quiet card games, or reading.

The American Spirit neighborhood is located just a short drive from the base area of the Club, which means Member services like fine dining, shopping, and a personal concierge are mere minutes away. The completely renovated Rainbow Lodge, with a fitness facility, bar, restaurant, and pool, is within walking distance. The Lake Lift and American Spirit Lift allow for easy access to all of Pioneer Mountain and its thousands of acres of Private Powder®. It's no surprise that American Spirit has become one of the favorite enclaves in the Club.



Kitchen

- AMERICAN SPIRIT 850 -

5 REVERE WAY

FEATURES

- Lot size: .42 acres
- Heated livable square footage: 7,768
- Bedrooms: 5 + 1 bunkroom
- Bathrooms: 6 + 2 powder rooms
- Garage: 2 car
- Currently under construction
- Adjacent to fully renovated Rainbow Lodge
- Views of Pioneer, Spanish Peaks, and Lone Peak
- Close proximity to Rainbow Lodge

This residence is located within Yellowstone Club, a 13,600 acre private, gated community located in Big Sky, Montana. Yellowstone Club is the world's only private ski and golf community, encompassing thousands of acres of private skiing along with a championship golf course designed by Tom Weiskopf. Additionally, whether looking to savor spectacular mountain panoramas, explore the vast wilderness or enjoy high-quality amenities, Yellowstone Club offers everything from fly fishing, hiking and biking trails to fine dining and spa services. Professional SnowSports, golf and outdoor recreation programs, along with dedicated children's activities, round out the unique Montana experience that is Yellowstone Club.



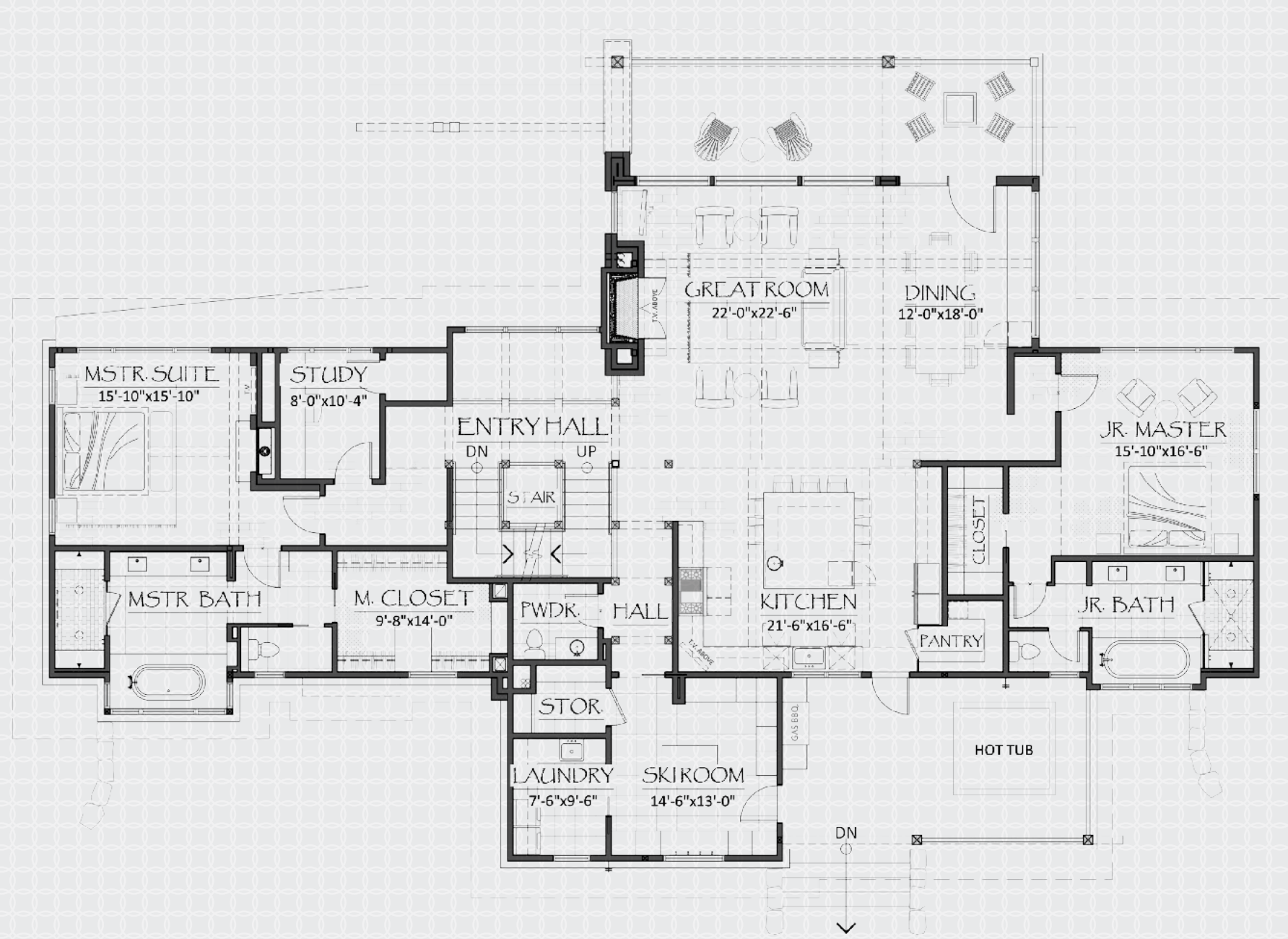
View of the Spanish Peaks

- AMERICAN SPIRIT 850 -

7,768 HEATED LIVABLE SQUARE FOOTAGE

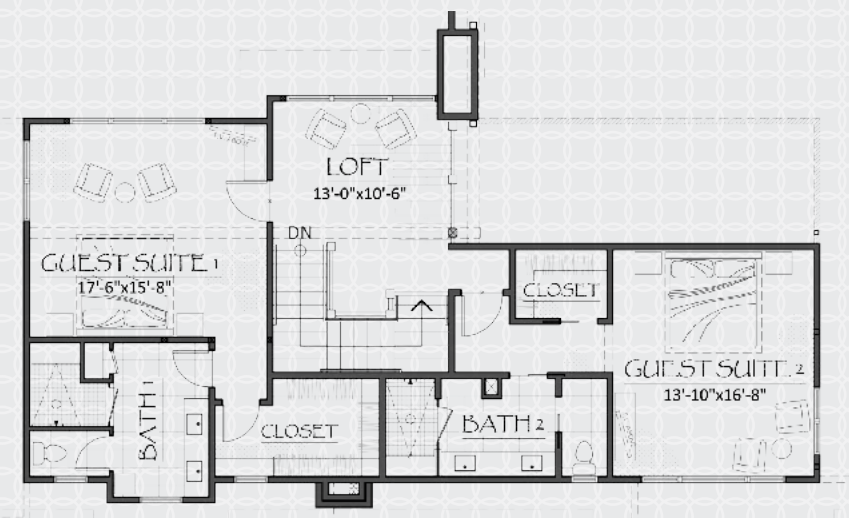
- AMERICAN SPIRIT 850 -

7,768 HEATED LIVABLE SQUARE FOOTAGE



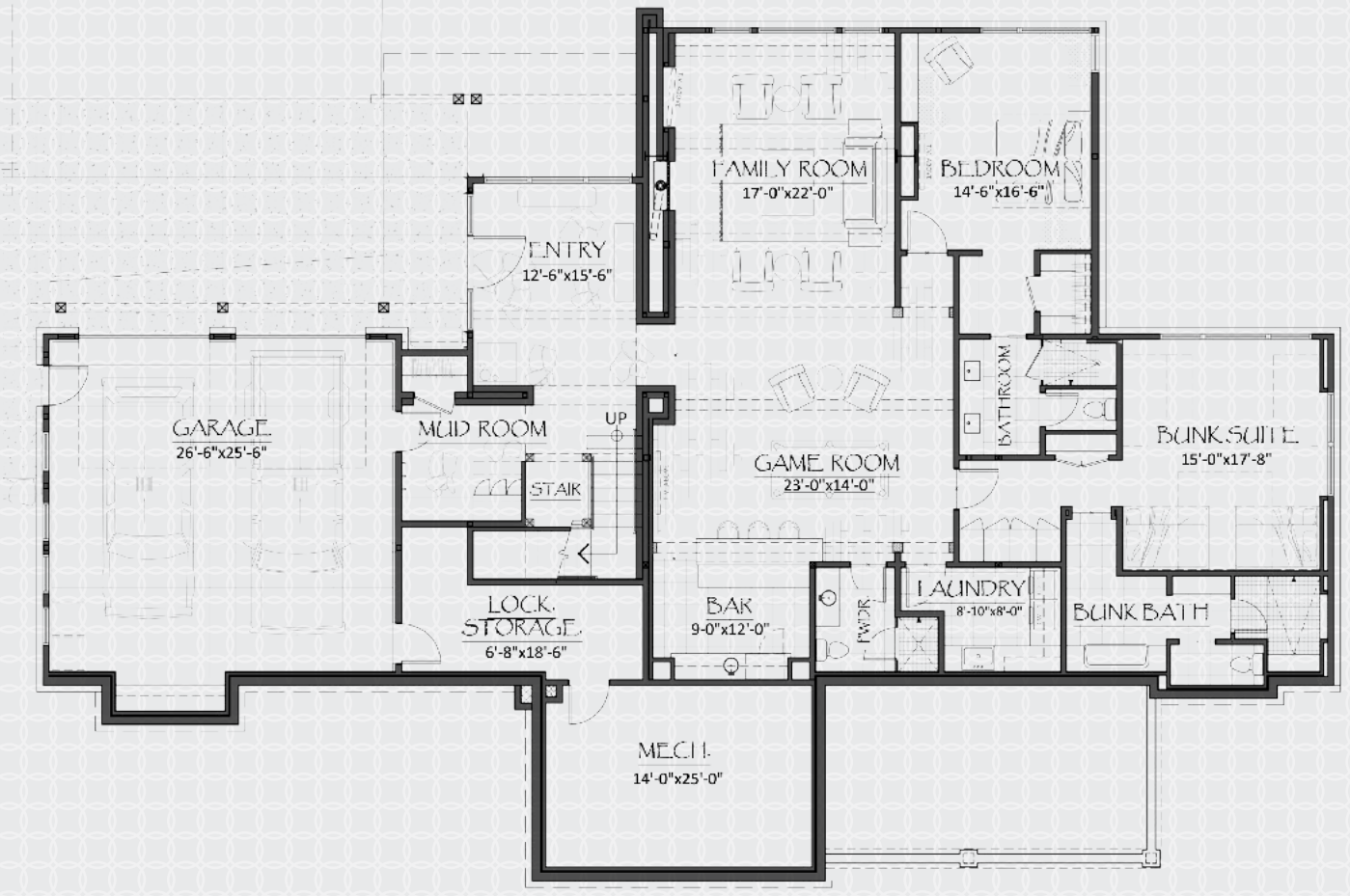
MAIN LEVEL

- Master Bedroom / Master Bathroom*
- Guest Bedroom / Guest Bathroom*
- Great Room / Kitchen / Dining Room / Powder Room*
- Study / Laundry Room / Hot Tub*
- Ski Room / Ski Access*



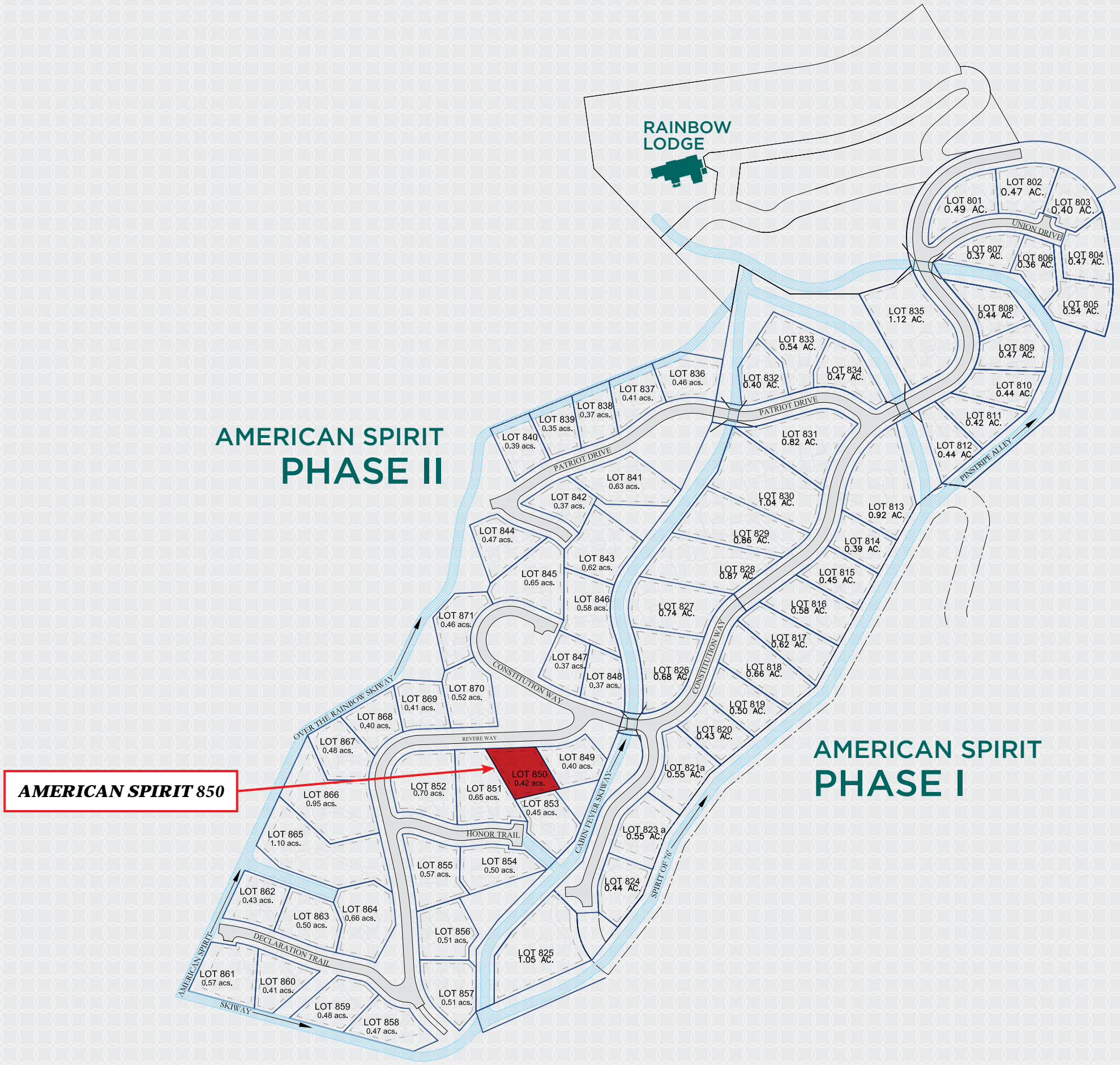
UPPER LEVEL

- 2 Bedrooms*
- 2 Bathrooms*
- Sitting Area*



LOWER LEVEL

- 1 Bedroom / 1 Bunkroom*
- 2 Bathrooms / Laundry Room*
- Family Room / Game Room / Bar*
- Mud Room / 2-Car Garage*



Great Room



Family Recreation Room

SHAKEN
WITH A TWIST
MUDDLE
STIRRED
ON THE ROCKS
DIRTY
STRAIGHT UP









Master Suite



Guest Suite



Sitting Area



Guest Suite



Office



Guest Suite



Guest Suite



View of Lone Peak





YELLOWSTONE CLUB

For more information about this property and its pricing please contact YC Realty.

(888) 700-7748 | (406) 995-4900 | yccsales@yellowstoneclub.com | P.O. Box 161097 | Big Sky, Montana 59716

www.yellowstoneclub.com

All information deemed reliable, but not guaranteed. All acreages and square footages are estimates. The purchase of a home or homesite does not include membership in Yellowstone Club, or any right to use the private club facilities. Ownership of a home/homesite includes an obligation to pay assessments to a property owner's association. Please ask a sales associate for details. Photographs are representational of the approximate view corridors from the home. Livable square footages listed in this marketing piece are based upon the calculation of only the heated and livable areas within the exterior walls of the property and said square footages are deemed reliable, but not guaranteed. All acreages and square footages are estimates and are provided by the Seller or his designated representative; these measurements should not be a substitute for one's own evaluation and investigation. Ski accessibility is a relative term and can have different implications and meanings depending on the individual. One should investigate fully the property as it relates to its potential ski access and determine for themselves the degree of ski access the property might have or be developed. Buyer acknowledges and agrees that neither the Seller, the Broker, the Sales Associate nor any other real estate representative of the Yellowstone Club or its related affiliates have made any warranties or representations upon which Buyer has relied concerning the ski-in ski-out accessibility of the property. The determination of the level of ski access that a property might have will be the Buyers sole determination.